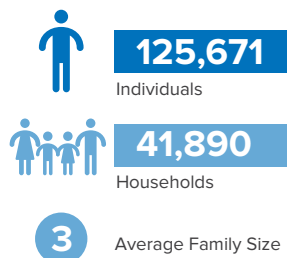


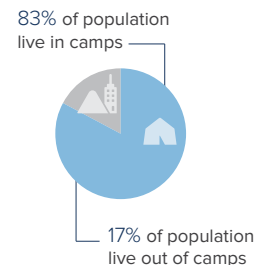
# Eritrean Refugees Overview in Sudan

as of 31 August 2021

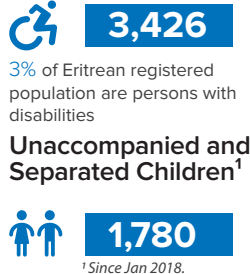
## Eritrean Refugees and Asylum-seekers



## Population Distribution



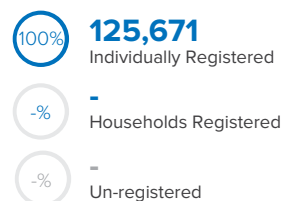
## Persons with Disabilities



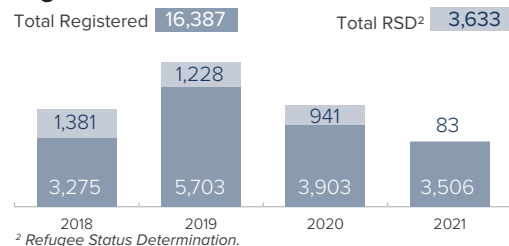
UNHCR continues to receive new arrivals in East Sudan, largely from Eritrea. The Commission of Refugees (CoR) receives and assists asylum-seekers at the border where they are temporarily hosted in reception centres.

Within 1-2 weeks they are transported to Shagarab camps where they undergo screening, registration, and Refugee Status Determination (RSD) while receiving life-saving services and shelter.

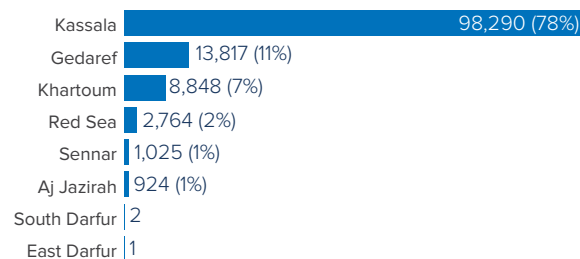
## Registration Status



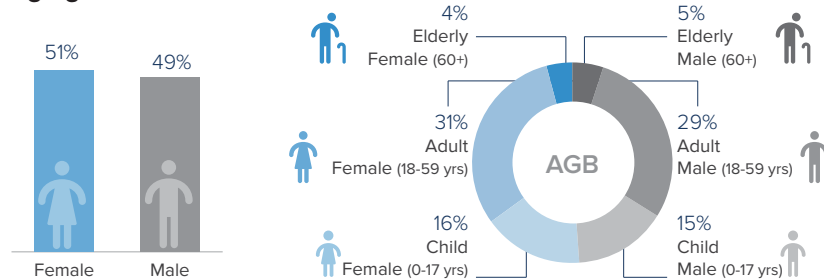
## Registration Statistics Since 2018



## Eritrean Refugees and Asylum-seekers Per State



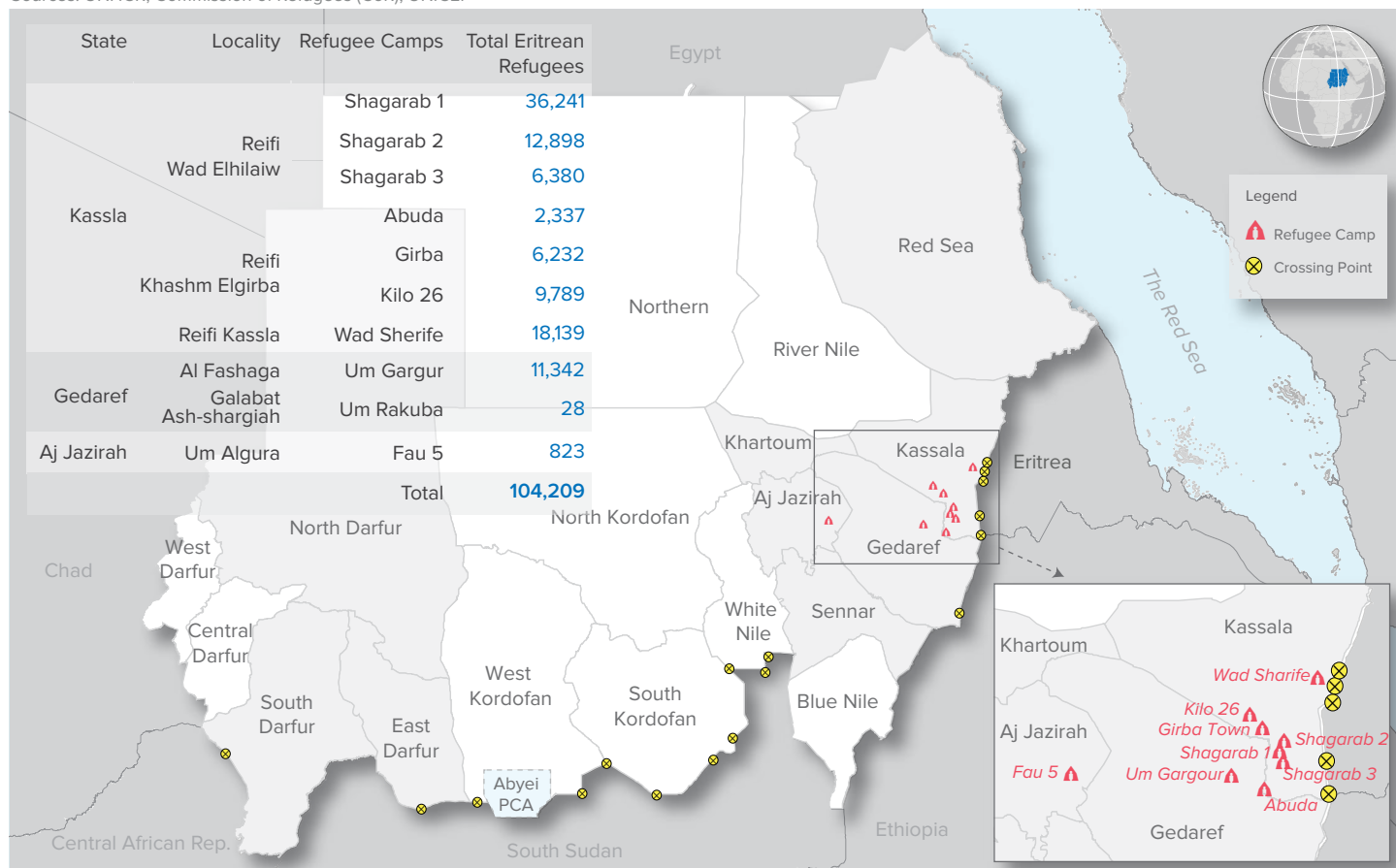
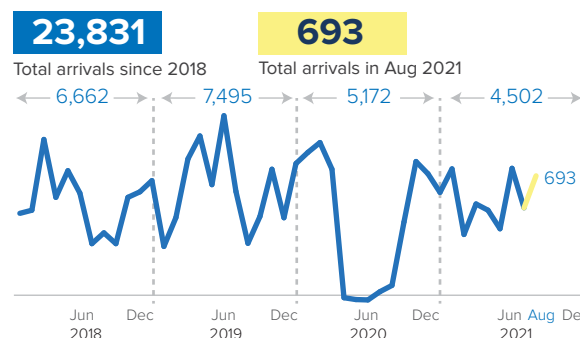
## Age-gender Breakdown<sup>3</sup>



<sup>3</sup> Population distribution statistics are based on registered individuals only.

Sources: UNHCR, Commission of Refugees (CoR), UNICEF

## New Arrivals Trends (2018 - 2021)



The boundaries and names shown and the designations used on this map do not imply official endorsement or acceptance by the United Nations.  
 Abyei region: Final status of the Abyei area is not yet determined.

This document and further information are available on UNHCR Sudan data-portal, please click on the link <https://data2.unhcr.org/en/country/sdn>, or scan the QR code.  
 For Feedback Contact: UNHCR, Information Management Unit, [SUDKHM@unhcr.org](mailto:SUDKHM@unhcr.org)

