

# MELKADIDA CAMP PROFILE



## 35,916

Total number of refugees

## 64%

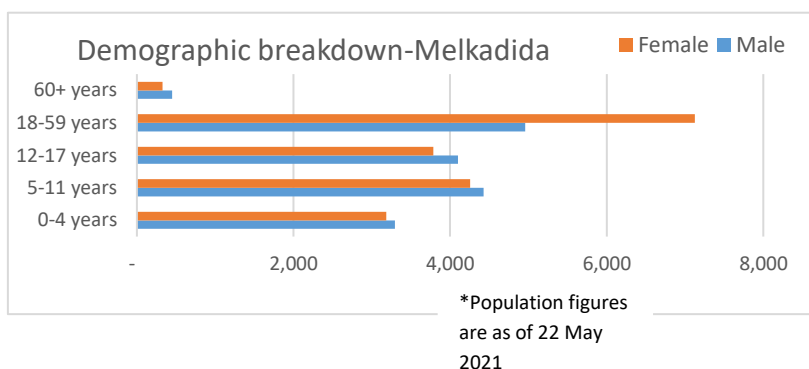
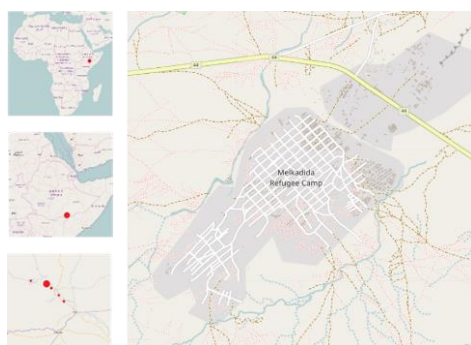
Children and youth

## 173

Hectares of developed irrigation agriculture

## 1

Livestock market and solar mini-grid



UNHCR provides protection and services to refugees in **Melkadida** in collaboration with:

- **Agency for Refugee and Returnee Affairs (ARRA)** – In representation of Ethiopia’s government. Camp management, primary health care and nutrition, food and CRIs distribution, protection, logistics and primary education
- **Save the Children (SCI)** – Early childhood care and education, child and youth protection
- **International Rescue Committee (IRC)** – Water, sanitation and hygiene (WASH)
- **International Medical Corps (IMC)** – Nutrition, reproductive health, HIV and gender-based violence (GBV)
- **Relief and Development Organisation (RaDO)** – Gender-based violence (GBV) and persons with specific needs
- **Action for the Needy in Ethiopia (ANE)** – Shelter
- **Save the Environment Ethiopia (SEE)** – Environment and energy
- **African Humanitarian Aid and Development Agency (AHADA)** – Logistics, supply and warehousing
- **Wabar and Council of Elders** – Peaceful coexistence
- **Wa-PYDO** - Livelihoods
- **Bokolmany Woreda** – Peaceful coexistence and agriculture
- **Liban High Court** – Access to Justice
- **World Food Programme (WFP)** – Food provision
- **International Organization for Migration (IOM)** – Refugee transportation
- **Humedica** – Healthcare
- **Jesuit Refugee Service (JRS)** – Adult and non-formal education
- **Norwegian Refugee Council (NRC)** – Youth trainings and saving loans
- **ZOA** - Livelihoods

For more information contact:

Abubakarr Talib Jalloh, Head of Sub-Office Melkadida, [jalloha@unhcr.org](mailto:jalloha@unhcr.org)  
 Giulia Naboni, Associate Reporting Officer, [naboni@unhcr.org](mailto:naboni@unhcr.org)

## Protection and Community Services

- Registration of new arrivals
- Distribution of core relief items (sleeping mats, kitchen sets, soap and sanitary materials)
- Provision of prevention, protection and response services for children, including those at risk
- Provision of decent shelter to meet basic needs through construction of concrete hollow block shelters
- SGBV prevention, mitigation and response
- Access to justice and legal counselling
- Provision of services to persons with specific needs
- Resettlement to third countries of asylum and facilitated process of family reunification

## Food

- Monthly food distribution to all refugees

## Nutrition

- Infant and young child feeding programs
- Community management of acute malnutrition programs for treatment of severe and moderate acute malnutrition
- Provision of blanket supplementary food ration for specific vulnerable groups
- Forums that provide information to increase awareness on appropriate nutrition practices

## Health

- Curative care consisting of outpatient and in-patient medical care and referral of complicated medical cases, including HIV treatment
- Maternity care, family planning and vaccination services for children
- Community-based health promotion and disease prevention
- Integrated mental health services and psychosocial counseling
- Health and nutrition screening of new arrivals at the reception center

## WASH

- Access to 23 liters of potable water per person per day
- Shared sanitary facilities/latrines available in the camp
- Weekly environmental health and hygiene campaigns
- Community hygiene clubs

## Education

- Facilitation of refugee and host community school enrolments and continued support to all schooling levels (ECCE, primary, secondary and tertiary)

## Environment and Energy

- Installation of mini-grids, training of solar technicians and establishment of cooperatives for the development of an energy market
- Establishment of a cooperative for local production of cookstoves
- Provision of support to energy cooperatives with the maintenance of solar streetlights for the refugee camp and host communities
- Production of different species of tree and fruit seedlings for distribution to communities and transplantation to rehabilitation sites
- Agroforestry-woodlot development and support to environmental cooperatives (gum and incense, plastic recycling, briquettes)

## Livelihoods

- Promotion of specialized agricultural production through market systems and value chain development
- Development of arable land, construction of irrigation schemes and provision of support to the agricultural cooperatives
- Provision of support to the milk and meat selling cooperatives of the Melkadida market, slaughterhouse and livestock market
- Coordination of the microfinance scheme that offers banking services to refugee and host community members
- Vocational training and professional opportunities to refugee and host community youth

### **UNHCR is grateful for the direct contributions to the UNHCR Ethiopia Operation for 2020 from:**

Denmark | UK | Netherlands | Ikea Foundation | European Union | Ireland | Church of Jesus Christ of Latter-day Saints | Spain | Private Donors

### **Special thanks to the major donors of unrestricted and regional funds:**

Germany | Canada | Sweden | Norway | Netherlands | Denmark | United Kingdom | Germany | Switzerland

---

For more information contact:

Abubakarr Talib Jalloh, Head of Sub-Office Melkadida, [jalloha@unhcr.org](mailto:jalloha@unhcr.org)  
Giulia Naboni, Associate Reporting Officer, [naboni@unhcr.org](mailto:naboni@unhcr.org)