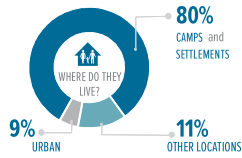
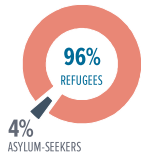


4.75 MILLION

REFUGEES AND ASYLUM-SEEKERS

KEY STATISTICS



29% BOYS
BELOW 18 YRS



28% GIRLS
BELOW 18 YRS



20% MEN
18+ YRS



23% WOMEN
18+ YRS

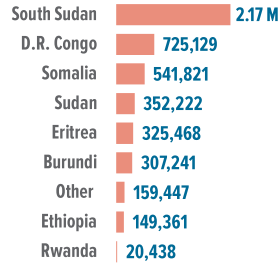


3% ELDERLY
ABOVE 60 YRS



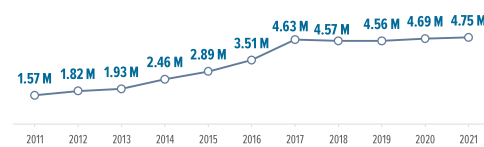
TOTALS BY COUNTRY OF ORIGIN

(to the nearest 100)



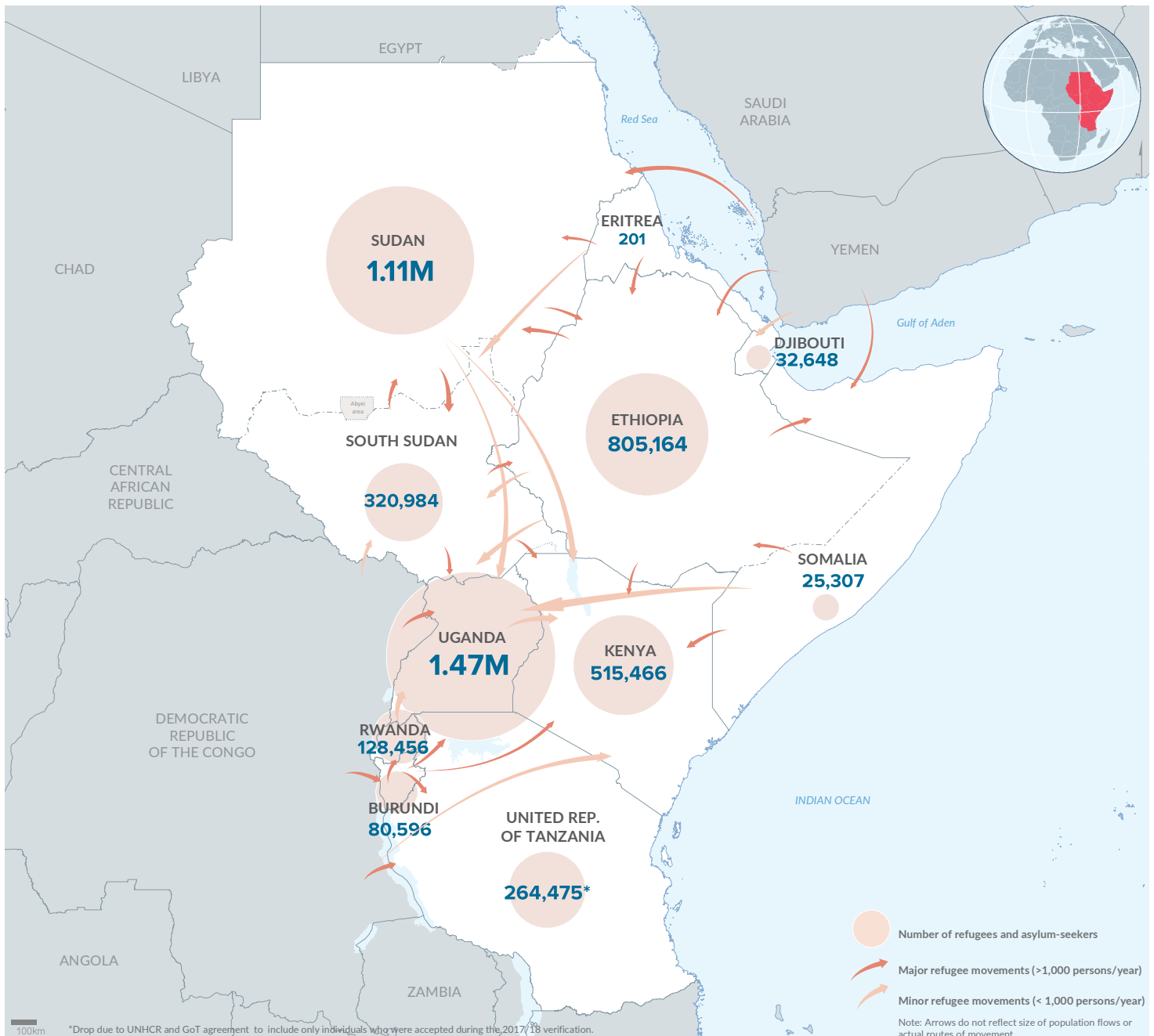
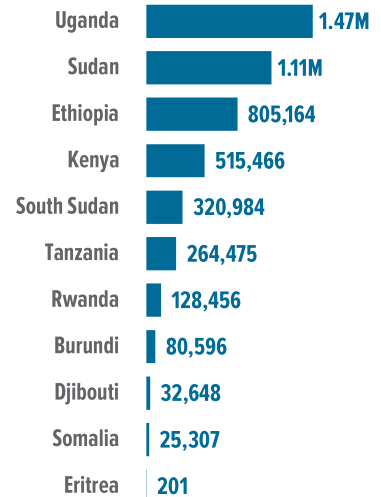
ANNUAL TREND OF DISPLACEMENT

| 2011 to 2021



* The decrease in population in 2018/2019 is attributed to the completion of a countrywide population verification exercise in Uganda and Ethiopia; as well as spontaneous refugee returns to Burundi and South Sudan

TOTALS BY HOST COUNTRY



The boundaries and names shown and the designations used on this map do not imply official endorsement or acceptance by the United Nations. Final boundaries between the Republic of Sudan and the Republic of South Sudan and Somalia and Ethiopia has not yet been determined. Final status of the Abyei area is not yet determined.
Creation date: 24 Apr 2021 Sources: Geographic data: UNCS. Population statistics: UNHCR Monthly Statistical Reports 31 March 2021 or latest available. Statistics should be considered provisional and subject to change. Author: UNHCR Regional Bureau for East, Horn of Africa and the Great Lakes Feedback: kenrgis@unhcr.org