

26.4 MILLION

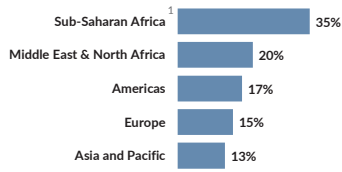
PERSONS OF CONCERN TO UNHCR IN SUB-SAHARAN AFRICA

This represented 35% of the global total which stood at 74.8 million persons of concern to UNHCR at the end of 2018.

This population is that of refugees, asylum-seekers, returnees, stateless persons, certain groups of internally displaced persons and other persons of concern to UNHCR.

GLOBAL DISTRIBUTION BY UNHCR REGIONS

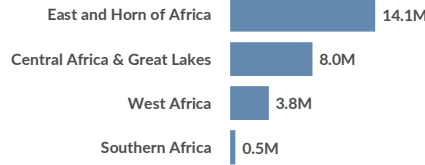
Percentage total population of concern



Sub-Saharan Africa includes East and Horn of Africa, Central Africa, Great Lakes, West Africa and Southern Africa sub-regions.

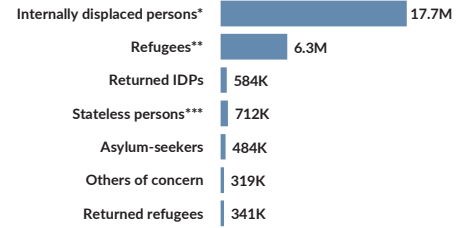
REGIONAL DISTRIBUTION IN SUB-SAHARAN

Total population of concern by UNHCR regions of operation



Over half (53%) of the population of concern to UNHCR in Sub-Saharan Africa is hosted in the East and Horn of Africa region.

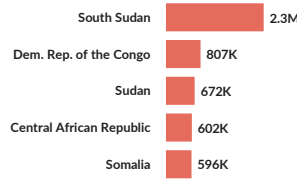
POPULATIONS OF CONCERN BY



* IDPs protected/assisted by UNHCR, including persons in IDP-like situations ** Includes persons in a refugee-like situation *** Persons under UNHCR's statelessness mandate

MAIN COUNTRIES OF ORIGIN

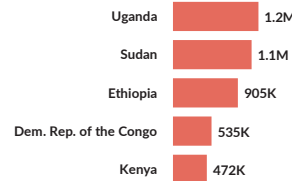
of refugees and asylum-seekers



Close to three quarters (73%) of all refugees and asylum-seekers in Sub-Saharan Africa came from just 5 countries.

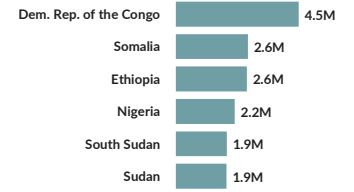
MAIN COUNTRIES OF ASYLUM

of refugees and asylum-seekers



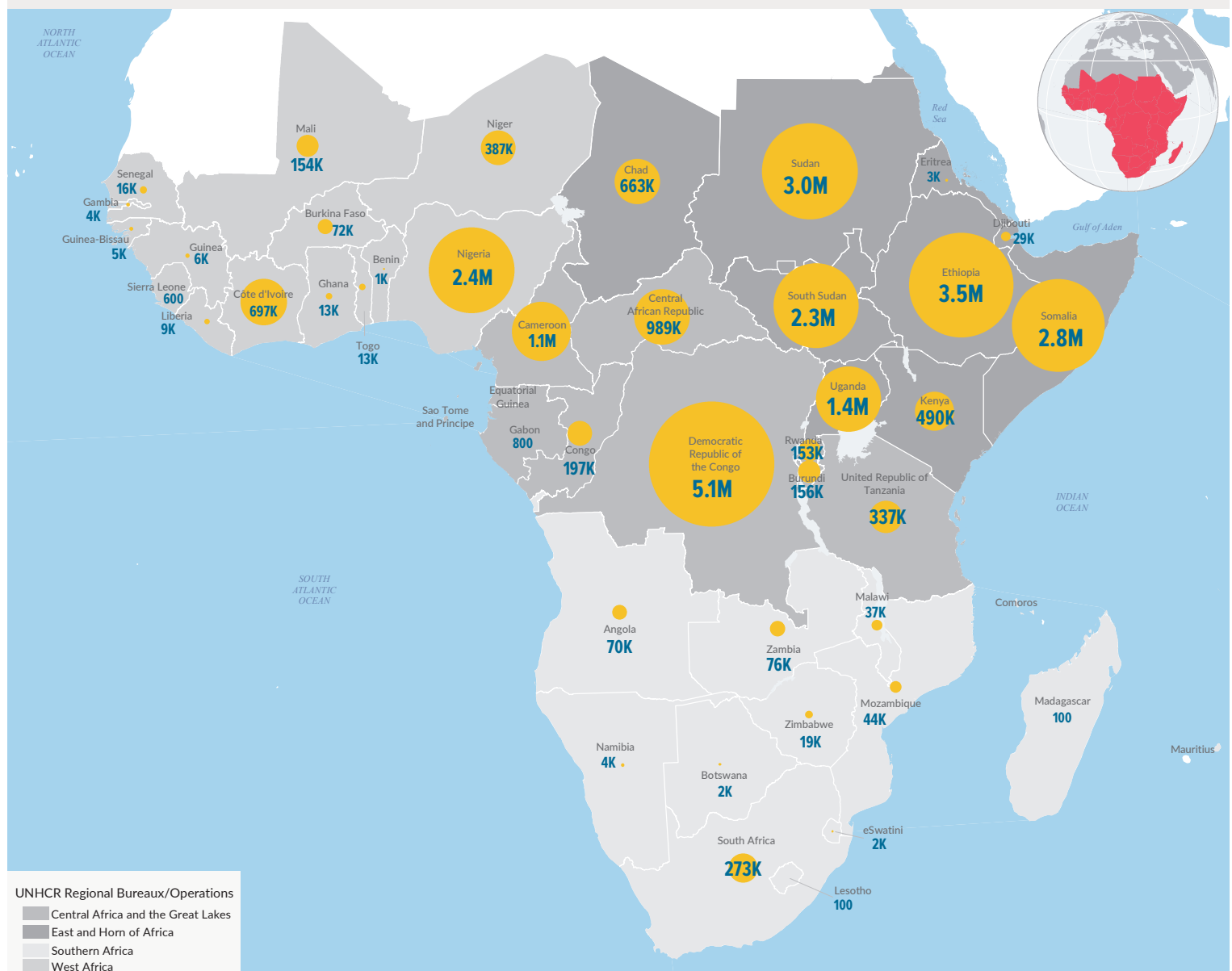
89% of refugees and asylum-seekers in Sub-Saharan Africa were hosted in just five countries.

TOP SOURCE COUNTRIES OF IDPS*



89% of IDPs in Sub-Saharan Africa were displaced within six countries only.

Total Population of concern to UNHCR by Country of Asylum



The boundaries and names shown and the designations used on this map do not imply official endorsement or acceptance by the United Nations. Final boundaries between the Republic of Sudan and the Republic of South Sudan and Somalia and Ethiopia has not yet been determined. *Final status of the Abyei area is not yet determined. The statistics and map reflects data published in Global Trends: Forced Displacement in 2018, UNHCR June 2019. The statistics should be considered provisional and subject to change. Figures rounded to the nearest thousands. **Printing date:** 24 Jun 2019 **Sources:** Geographic data - UNCS. Statistics - UNHCR, Governments, NGOs. **Author:** UNHCR Regional Service Centre in Nairobi **Feedback:** kenrgis@unhcr.org