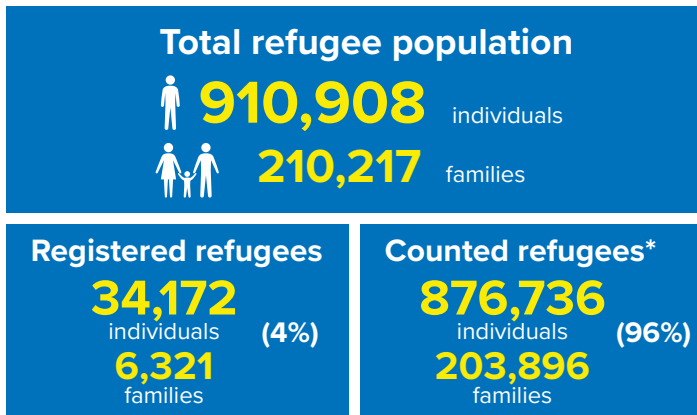
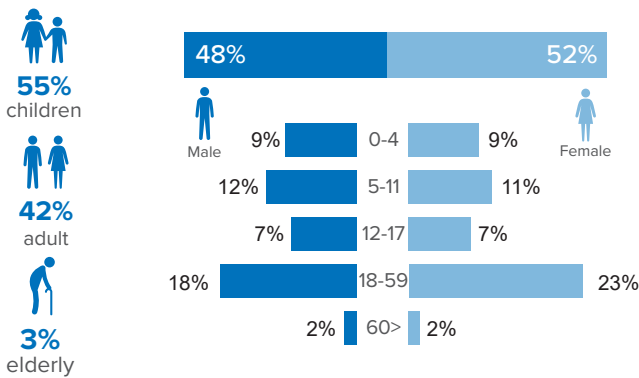


Refugee population figure

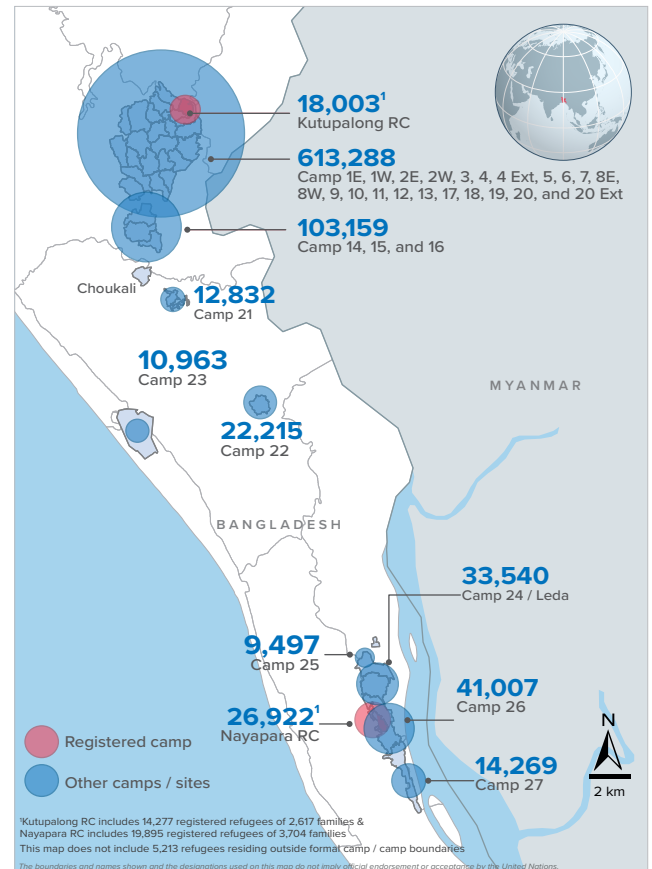


* Some refugees living in host communities and in certain locations beyond the camp boundaries may not have been counted.

Demography

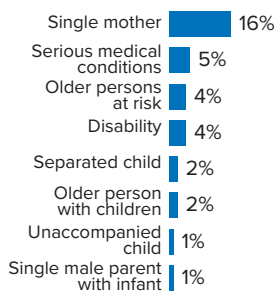


Refugee population density



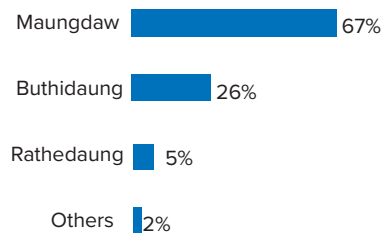
Specific needs

31% of the families have been identified with at least one protection vulnerability*



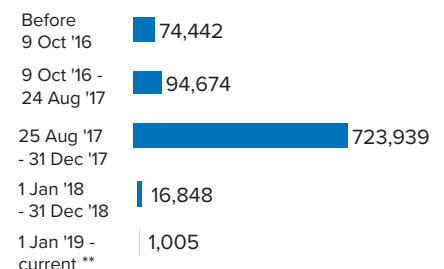
Place of origin

67% of the Rohingya refugees comes from Maungdaw Township



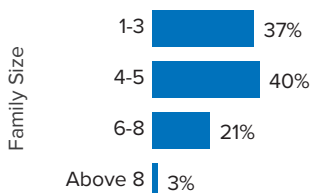
Period of arrival

81% of current population arrived between Aug. 2017 to date



Family size breakdown

40% of the families have a standard family size of 4-5 persons



Linking exercise

The Linking Exercise, conducted from December 2017 until February 2018, was a collaborative effort between the Government of Bangladesh and the United Nations High Commissioner for Refugees that aimed to merge the family based Rohingya population data collected through the Family Counting Exercise with attributes of the individual Rohingya population data collected by the Ministry of Home Affairs.

The exercise was conducted with a view to creating a unified dataset with individual data grouped into families which will be used to better protect and assist families.

*Figures are the percentage of total families with at least one person with a specific need. More than one specific need may be present within one family.

**In 2019, the number of new arrivals includes those arriving directly from Myanmar as well as other locations.

Age and gender breakdown by camp/site

Camp	Infant female below 1	Infant male below 1	1-4 Children female	1-4 Children male	5-11 Children female	5-11 Children male	12-17 Children female	12-17 Children male	18-59 Adult female	18-59 Adult male	60+ Elderly female	60+ Elderly male	Total Families	Total Individuals
Camp 15	951	900	3,548	3,692	5,303	5,483	3,426	3,605	11,545	9,190	908	905	11,185	49,456
Camp 13	722	773	3,101	3,220	4,521	4,777	2,781	2,859	9,842	7,773	745	686	9,813	41,800
Camp 1W	764	756	2,975	2,980	4,451	4,545	2,695	2,800	9,690	7,796	867	754	9,481	41,073
Camp 26	694	615	3,131	3,132	4,744	5,204	2,971	2,770	9,800	6,756	635	555	9,392	41,007
Camp 1E	677	747	2,837	3,018	4,332	4,552	2,699	2,799	9,477	7,866	818	712	9,333	40,534
Camp 7	721	737	3,068	3,197	4,321	4,501	2,696	2,626	9,331	7,303	731	660	9,502	39,892
Camp 3	699	745	3,031	3,127	4,248	4,451	2,528	2,723	9,435	7,367	696	591	9,197	39,641
Camp 9	628	573	2,816	2,821	3,989	4,064	2,482	2,488	8,603	6,950	713	694	8,714	36,821
Camp 24	506	521	2,278	2,488	4,027	4,146	2,308	2,403	8,002	5,903	543	415	7,760	33,540
Camp 10	627	620	2,594	2,727	3,397	3,747	2,147	2,085	7,792	6,111	599	523	7,655	32,969
Camp 8W	547	516	2,626	2,568	3,430	3,635	2,036	2,146	7,648	6,102	607	534	7,479	32,395
Camp 4	581	636	2,466	2,609	3,616	3,736	2,059	2,067	7,682	6,001	521	410	7,946	32,384
Camp 14	561	586	2,317	2,559	3,394	3,737	2,261	2,245	7,303	5,825	605	524	7,051	31,917
Camp 11	547	577	2,366	2,389	3,378	3,584	2,136	2,190	7,260	5,924	533	495	7,127	31,379
Camp 8E	499	499	2,248	2,326	3,364	3,415	2,307	2,235	7,362	5,900	538	554	7,214	31,247
Camp 2E	558	531	2,335	2,370	3,354	3,626	1,813	1,860	7,288	5,475	519	445	7,306	30,174
Camp 18	472	498	2,213	2,242	2,887	3,001	1,793	1,686	6,431	5,013	360	360	6,589	26,956
Nayapara RC*	86	90	1,549	1,624	2,913	2,994	2,301	2,359	7,139	5,006	447	414	5,702	26,922
Camp 2W	428	437	1,934	2,029	2,940	3,174	1,641	1,620	6,142	4,823	499	391	5,980	26,058
Camp 5	435	473	1,963	2,028	2,779	2,831	1,540	1,622	5,946	4,623	465	422	6,050	25,127
Camp 6	522	464	2,013	2,153	2,715	2,925	1,471	1,550	5,805	4,585	438	390	5,830	25,031
Camp 12	404	388	1,752	1,870	2,553	2,806	1,713	1,644	5,532	4,292	438	380	5,287	23,772
Camp 22	410	381	1,598	1,800	2,551	2,615	1,671	1,667	4,846	3,964	378	334	4,587	22,215
Camp 16	433	404	1,607	1,703	2,351	2,569	1,522	1,434	5,023	4,028	385	327	4,881	21,786
Camp 19	336	324	1,590	1,675	2,243	2,489	1,432	1,465	4,860	3,784	349	286	4,826	20,833
Kutupalong RC*	78	58	1,018	1,170	1,926	2,054	1,469	1,431	4,599	3,687	264	249	3,549	18,003
Camp 17	270	301	1,441	1,432	1,890	1,982	1,041	1,043	4,029	3,087	243	241	4,023	17,000
Camp 27	237	217	1,094	1,148	1,674	1,710	1,030	1,063	3,307	2,384	219	186	3,150	14,269
Camp 21	242	227	966	1,016	1,417	1,482	766	818	3,095	2,478	187	138	3,148	12,832
Camp 23	181	199	808	845	1,451	1,491	632	650	2,687	1,690	170	159	2,661	10,963
Camp 25	140	158	710	701	1,105	1,189	742	685	2,209	1,578	168	112	2,143	9,497
Camp 20	128	140	577	658	811	878	416	453	1,835	1,362	127	98	1,811	7,483
Camp 4 Extension	110	110	486	546	694	714	340	349	1,477	1,179	92	81	1,494	6,178
Camp 20 Extension	94	78	374	401	479	495	260	250	1,105	890	65	50	1,121	4,541
No camp**	99	84	429	416	581	606	292	318	1,225	1,011	85	67	1,230	5,213
Total	15,387	15,363	67,859	70,680	99,829	105,208	61,417	62,008	215,352	167,706	15,957	14,142	210,217	910,908

*Kutupalong RC includes 14,277 registered refugees of 2,617 families & Nayapara RC includes 19,895 registered refugees of 3,704 families

**This represents refugees residing outside formal camp boundaries

Population figures by period of arrival

Arrival Period	Before 09 Oct 2016		09 Oct 2016 - 24 Aug 2017		25 Aug 2017 - 31 Dec 2017		01 Jan 2018 - 31 Dec 2018		01 Jan 2019 - Current date***		Total Families	Total Individuals
Camp	Total Families	Total Individuals	Total Families	Total Individuals	Total Families	Total Individuals	Total Families	Total Individuals	Total Families	Total Individuals		
Camp 15	11	47	761	3,376	10,401	45,980	12	53	-	-	11,185	49,456
Camp 13	16	60	786	3,436	8,935	37,998	76	306	-	-	9,813	41,800
Camp 26	72	352	828	3,682	8,056	35,084	436	1,889	-	-	9,392	41,007
Camp 1W	26	98	1,043	4,496	8,384	36,385	28	94	-	-	9,481	41,070
Camp 1E	40	188	1,651	7,118	7,607	33,107	34	119	1	2	9,333	40,534
Camp 3	21	99	940	4,143	8,203	35,262	33	137	-	-	9,197	39,641
Camp 7	125	536	1,093	4,711	8,180	34,249	96	367	8	29	9,502	39,892
Camp 9	100	395	2,088	8,479	6,494	27,832	31	112	1	3	8,714	36,821
Camp 24	2,172	10,522	523	2,210	5,049	20,756	16	52	-	-	7,760	33,540
Camp 10	13	56	616	2,633	7,002	30,193	24	87	-	-	7,655	32,969
Camp 8W	28	114	639	2,795	6,730	29,169	81	315	1	2	7,479	32,395
Camp 4	33	135	342	1,407	7,301	29,713	270	1,129	-	-	7,946	32,384
Camp 14	13	47	603	2,795	6,391	28,899	44	176	-	-	7,051	31,917
Camp 11	4	19	1,080	4,795	6,024	26,490	19	75	-	-	7,127	31,379
Camp 8E	36	144	849	3,714	6,285	27,243	42	141	2	5	7,214	31,247
Camp 2E	3,330	14,101	1,695	7,104	2,221	8,775	56	176	4	18	7,306	30,174
Nayapara RC*	3,749	20,076	248	968	1,668	5,771	36	106	1	1	5,702	26,922
Camp 18	16	61	166	683	6,367	26,066	40	146	-	-	6,589	26,956
Camp 2W	1,902	8,710	1,422	6,143	2,594	10,992	59	200	3	13	5,980	26,058
Camp 5	30	120	524	2,215	5,472	22,707	24	85	-	-	6,050	25,127
Camp 6	58	254	1,129	5,082	4,622	19,630	20	63	1	2	5,830	25,031
Camp 12	7	37	268	1,213	4,954	22,298	56	217	2	7	5,287	23,772
Camp 22	6	39	207	998	4,360	21,130	14	48	-	-	4,587	22,215
Camp 16	5	25	279	1,236	4,575	20,435	22	90	-	-	4,881	21,786
Camp 19	4	13	398	1,792	4,226	18,224	198	804	-	-	4,826	20,833
Kutupalong RC*	2,840	15,204	155	609	537	2,134	17	56	-	-	3,549	18,003
Camp 17	36	158	213	870	2,637	11,007	1,137	4,965	-	-	4,023	17,000
Camp 27	29	142	275	1,300	2,698	12,149	148	678	-	-	3,150	14,269
Camp 21	16	74	147	636	2,727	11,113	232	892	26	120	3,148	12,832
Camp 23	252	1,155	287	1,222	2,106	8,517	16	69	-	-	2,661	10,963
Camp 25	17	85	252	1,122	1,870	8,271	4	19	-	-	2,143	9,497
Camp 20	60	266	111	489	1,311	5,401	329	1,327	-	-	1,811	7,483
Camp 4 Extension	59	229	131	575	1,171	4,811	133	563	-	-	1,494	6,178
Camp 20 Extension	82	342	66	292	746	3,027	224	868	3	12	1,121	4,541
No camp**	128	542	81	335	719	3,121	110	424	192	791	1,230	5,213
Total	15,336	74,442	21,896	94,674	168,623	723,939	4,117	16,848	245	1,005	210,217	910,908

*Kutupalong RC includes 14,277 registered refugees of 2,617 families & Nayapara RC includes 19,895 registered refugees of 3,704 families

**This represents refugees residing outside formal camp boundaries

***In 2019, the number of new arrivals includes those arriving directly from Myanmar as well as other locations

Creation date: 31 May 2019 Sources: UNHCR Feedback: bgdcoim@unhcr.org

Population figures by specific needs

Camp	Families with separated children	Families with unaccompanied children	Families with a person with disability	Families with older person at risk	Families with older person at risk with children	Families with people with serious medical condition	Single male parent with infants	Single female parent	Families with people with specific needs
Camp 26	170	53	280	357	113	215	81	2,178	3,233
Camp 15	234	60	354	589	198	460	63	1,606	3,213
Camp 1E	174	45	556	461	326	489	57	1,163	2,951
Camp 7	222	28	361	374	243	460	106	1,286	2,858
Nayapara RC	176	41	607	164	50	1,197	35	1,185	2,817
Camp 13	243	79	311	395	208	344	64	1,424	2,805
Camp 1W	169	32	404	449	215	447	66	1,272	2,776
Camp 3	200	61	374	367	288	320	65	1,425	2,686
Camp 24	177	73	299	285	121	256	43	1,637	2,632
Camp 4	246	91	203	301	205	293	101	1,505	2,590
Camp 9	149	73	382	396	260	487	95	1,046	2,546
Camp 10	125	79	381	336	239	505	93	1,036	2,438
Camp 8E	152	69	338	364	239	410	83	1,057	2,318
Camp 2E	160	54	264	253	207	307	53	1,220	2,278
Camp 18	152	62	238	220	167	293	81	1,133	2,084
Camp 11	167	61	263	290	155	229	65	1,058	1,979
Camp 5	158	68	213	296	163	214	61	1,094	1,965
Camp 14	119	45	185	314	138	305	43	968	1,912
Camp 6	164	44	212	241	130	314	42	836	1,852
Camp 2W	109	17	287	240	115	266	59	810	1,759
Camp 8W	95	36	233	266	148	292	79	742	1,686
Kutupalong RC	52	17	344	86	35	772	7	527	1,519
Camp 12	81	33	142	204	103	138	32	768	1,465
Camp 19	122	33	190	219	81	118	46	761	1,418
Camp 16	92	22	167	201	81	159	35	704	1,340
Camp 17	106	22	140	152	82	125	41	705	1,246
Camp 22	69	17	159	156	77	154	16	580	1,120
Camp 27	54	13	99	88	33	63	21	731	1,025
Camp 23	50	12	72	97	43	69	11	752	1,020
Camp 21	66	23	109	96	32	105	35	512	921
Camp 25	38	23	75	83	33	87	18	493	754
Camp 20	26	12	91	68	47	75	19	293	572
Camp 4 Extension	22	13	54	39	35	47	14	190	404
Camp 20 Extension	26	13	45	37	25	41	12	144	316
No camp	20	6	27	39	12	21	8	142	316
Total	4,385	1,430	8,459	8,523	4,647	10,077	1,750	32,983	64,814