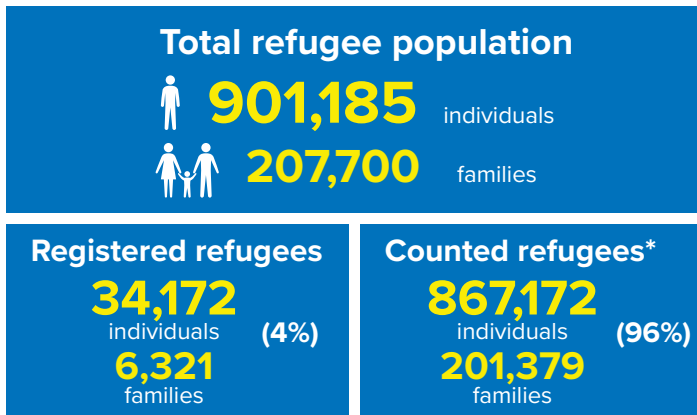
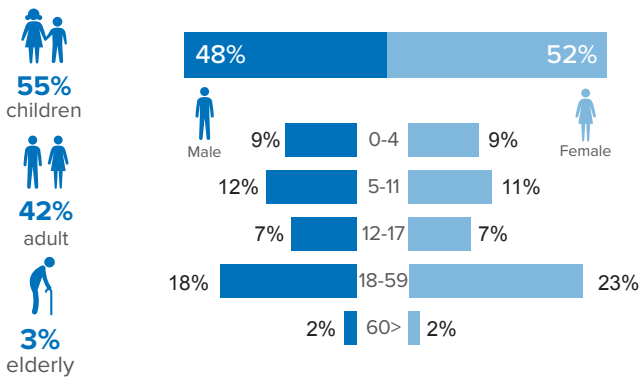


Refugee population figure

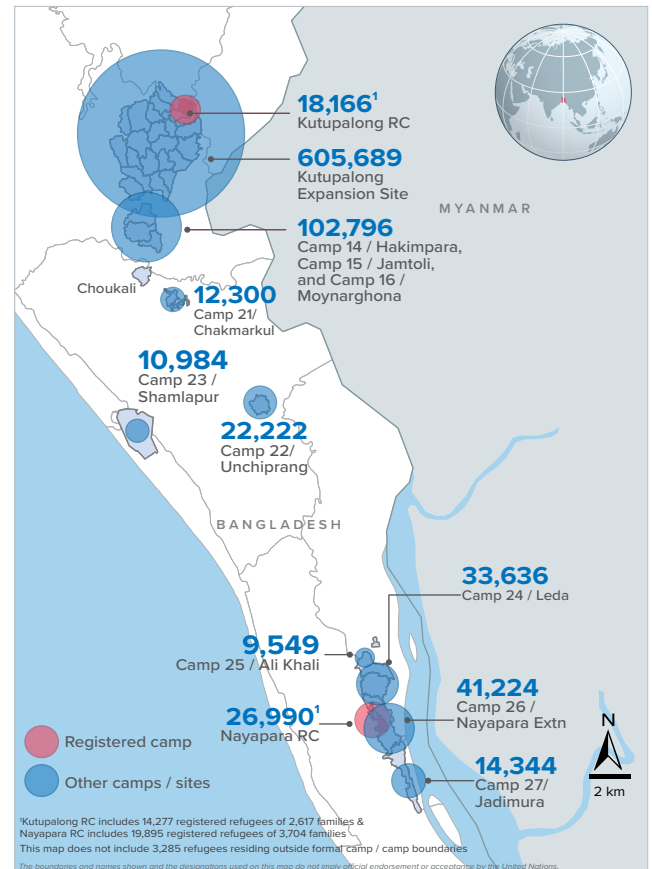


* Some refugees living in host communities and in certain locations beyond the camp boundaries may not have been counted.

Demography

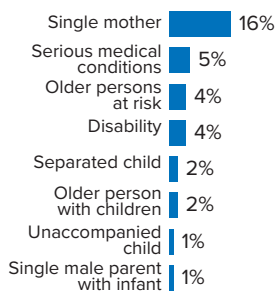


Refugee population density



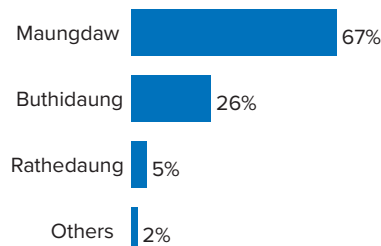
Specific needs

31% of the families have been identified with at least one protection vulnerability*



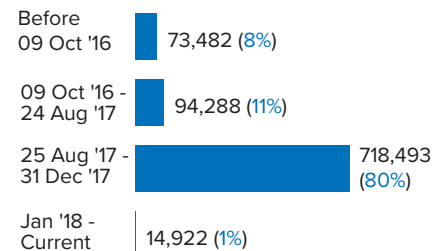
Place of origin

67% of the Rohingya refugees comes from Maungdaw Township



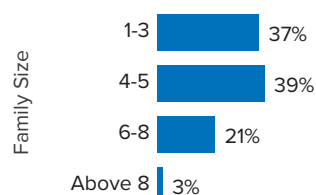
Period of arrival

80% of current population arrived between Aug. and Dec 2017



Family size breakdown

39% of the families have a standard family size of 4-5 persons



Linking exercise

The Linking Exercise, conducted from December 2017 until February 2018, was a collaborative effort between the Government of Bangladesh and the United Nations High Commissioner for Refugees that aimed to merge the family based Rohingya population data collected through the Family Counting Exercise with attributes of the individual Rohingya population data collected by the Ministry of Home Affairs.

The exercise was conducted with a view to creating a unified dataset with individual data grouped into families which will be used to better protect and assist families.

*Figures are the percentage of total families with at least one person with a specific need. More than one specific need may be present within one family.

Age and gender breakdown by camp/site

Camp	Infant female below 1	Infant male below 1	1-4 Children female	1-4 Children male	5-11 Children female	5-11 Children male	12-17 Children female	12-17 Children male	18-59 Adult female	18-59 Adult male	60+ Elderly female	60+ Elderly male	Total Families	Total Individuals
Camp 15	947	898	3,542	3,693	5,304	5,475	3,424	3,609	11,528	9,190	908	905	11,171	49,423
Camp 13	714	767	3,081	3,185	4,487	4,753	2,766	2,844	9,754	7,716	740	683	9,726	41,490
Camp 26	697	619	3,143	3,155	4,770	5,232	2,982	2,783	9,851	6,796	638	558	9,442	41,224
Camp 1W	754	748	2,926	2,936	4,403	4,461	2,696	2,776	9,579	7,698	857	753	9,363	40,587
Camp 1E	660	730	2,805	2,970	4,267	4,503	2,644	2,765	9,340	7,770	796	697	9,202	39,947
Camp 3	682	727	2,990	3,099	4,151	4,386	2,479	2,685	9,278	7,257	693	586	9,060	39,013
Camp 7	704	718	2,987	3,126	4,205	4,424	2,622	2,567	9,089	7,136	720	650	9,259	38,948
Camp 9	628	567	2,803	2,805	3,997	4,060	2,491	2,483	8,574	6,928	713	693	8,678	36,742
Camp 24	508	522	2,285	2,497	4,038	4,157	2,314	2,410	8,024	5,916	545	420	7,780	33,636
Camp 10	628	619	2,577	2,711	3,392	3,746	2,144	2,081	7,772	6,094	597	521	7,626	32,882
Camp 8W	559	523	2,655	2,595	3,466	3,686	2,071	2,168	7,732	6,178	613	539	7,559	32,785
Camp 14	556	584	2,308	2,540	3,377	3,724	2,254	2,241	7,262	5,807	601	523	7,008	31,777
Camp 4	577	618	2,391	2,543	3,535	3,690	2,051	2,030	7,527	5,873	521	392	7,807	31,748
Camp 8E	501	501	2,260	2,342	3,380	3,438	2,315	2,245	7,375	5,914	544	556	7,232	31,371
Camp 11	541	574	2,348	2,371	3,358	3,560	2,130	2,191	7,212	5,894	538	496	7,080	31,213
Camp 2E	551	527	2,258	2,311	3,286	3,534	1,787	1,848	7,135	5,358	513	442	7,122	29,550
Nayapara RC*	86	90	1,556	1,628	2,921	3,005	2,303	2,363	7,160	5,017	447	414	5,721	26,990
Camp 18	465	494	2,189	2,225	2,866	2,980	1,790	1,681	6,367	4,977	354	359	6,528	26,747
Camp 2W	416	420	1,896	1,989	2,876	3,136	1,580	1,594	6,010	4,730	488	376	5,850	25,511
Camp 5	442	469	1,958	2,045	2,784	2,820	1,549	1,636	5,952	4,637	461	417	6,052	25,170
Camp 6	512	461	1,987	2,093	2,689	2,855	1,449	1,541	5,724	4,498	428	389	5,729	24,626
Camp 12	391	377	1,690	1,795	2,483	2,755	1,667	1,623	5,354	4,163	432	374	5,117	23,104
Camp 22	411	381	1,596	1,798	2,550	2,618	1,675	1,670	4,846	3,965	378	334	4,587	22,222
Camp 16	433	398	1,589	1,679	2,329	2,543	1,519	1,432	4,968	3,997	385	324	4,829	21,596
Camp 19	338	321	1,592	1,674	2,241	2,494	1,427	1,468	4,845	3,772	347	288	4,813	20,807
Kutupalong RC*	79	65	1,027	1,179	1,945	2,074	1,483	1,438	4,632	3,722	269	253	3,582	18,166
Camp 17	254	296	1,381	1,354	1,815	1,887	1,012	994	3,839	2,946	240	232	3,841	16,250
Camp 27	242	217	1,101	1,156	1,681	1,718	1,032	1,068	3,327	2,396	219	187	3,168	14,344
Camp 21	228	213	910	967	1,347	1,414	761	800	2,969	2,372	184	135	3,018	12,300
Camp 23	181	199	808	845	1,455	1,492	634	653	2,692	1,693	171	161	2,666	10,984
Camp 25	141	159	712	706	1,114	1,194	746	690	2,221	1,585	168	113	2,154	9,549
Camp 20	126	139	572	653	801	859	414	450	1,816	1,336	125	99	1,786	7,390
Camp 4 Extension	105	105	440	491	629	654	318	305	1,356	1,064	82	79	1,361	5,628
Camp 20 Extension	88	73	345	358	440	457	249	240	1,014	806	60	50	1,026	4,180
No camp**	62	49	242	264	376	385	213	238	760	595	54	47	757	3,285
Total	15,207	15,168	66,950	69,778	98,758	104,169	60,991	61,610	212,884	165,796	15,829	14,045	207,700	901,185

*Kutupalong RC includes 14,277 registered refugees of 2,617 families & Nayapara RC includes 19,895 registered refugees of 3,704 families

**This represents refugees residing outside formal camp boundaries

Population figures by period of arrival

Arrival Period	Before 09 Oct 2016		09 Oct 2016 - 24 Aug 2017		25 Aug 2017 - 31 Dec 2017		01 Jan 2018 - Current date		Total Families	Total Individuals
Camp	Total Families	Total Individuals	Total Families	Total Individuals	Total Families	Total Individuals	Total Families	Total Individuals		
Camp 15	11	47	764	3,392	10,388	45,950	8	34	11,171	49,423
Camp 13	12	48	785	3,432	8,875	37,803	54	207	9,726	41,490
Camp 26	72	352	829	3,686	8,104	35,295	437	1,891	9,442	41,224
Camp 1W	25	97	1,048	4,521	8,266	35,890	24	79	9,363	40,587
Camp 1E	39	178	1,629	7,006	7,501	32,642	33	121	9,202	39,947
Camp 3	23	105	951	4,163	8,053	34,613	33	132	9,060	39,013
Camp 7	125	551	1,078	4,662	7,992	33,469	64	266	9,259	38,948
Camp 9	93	373	2,096	8,514	6,467	27,782	22	73	8,678	36,742
Camp 24	2,178	10,551	524	2,213	5,062	20,820	16	52	7,780	33,636
Camp 10	12	53	615	2,628	6,978	30,120	21	81	7,626	32,882
Camp 8W	39	166	657	2,875	6,786	29,449	77	295	7,559	32,785
Camp 14	12	44	603	2,795	6,359	28,797	34	141	7,008	31,777
Camp 4	39	175	325	1,339	7,187	29,159	256	1,075	7,807	31,748
Camp 8E	34	142	852	3,728	6,322	27,405	24	96	7,232	31,371
Camp 11	3	11	1,084	4,811	5,987	26,366	6	25	7,080	31,213
Camp 2E	3,240	13,712	1,694	7,157	2,150	8,556	38	125	7,122	29,550
Nayapara RC*	3,750	20,077	250	971	1,685	5,836	36	106	5,721	26,990
Camp 18	12	48	166	686	6,324	25,917	26	96	6,528	26,747
Camp 2W	1,837	8,422	1,425	6,143	2,539	10,780	49	166	5,850	25,511
Camp 5	35	139	530	2,247	5,463	22,692	24	92	6,052	25,170
Camp 6	62	276	1,071	4,834	4,581	19,462	15	54	5,729	24,626
Camp 12	5	29	259	1,184	4,819	21,742	34	149	5,117	23,104
Camp 22	6	39	208	1,005	4,360	21,132	13	46	4,587	22,222
Camp 16	5	25	280	1,241	4,539	20,312	5	18	4,829	21,596
Camp 19	4	13	397	1,790	4,224	18,232	188	772	4,813	20,807
Kutupalong RC*	2,840	15,208	159	627	566	2,279	17	52	3,582	18,166
Camp 17	33	141	190	777	2,492	10,411	1,126	4,921	3,841	16,250
Camp 27	29	142	279	1,315	2,712	12,209	148	678	3,168	14,344
Camp 21	12	53	144	626	2,737	11,163	125	458	3,018	12,300
Camp 23	252	1,155	287	1,222	2,111	8,538	16	69	2,666	10,984
Camp 25	17	85	253	1,125	1,880	8,320	4	19	2,154	9,549
Camp 20	57	253	110	481	1,294	5,348	325	1,308	1,786	7,390
Camp 4 Extension	65	264	121	534	1,072	4,413	103	417	1,361	5,628
Camp 20 Extension	64	276	64	282	715	2,912	183	710	1,026	4,180
No camp**	49	232	65	276	620	2,679	23	98	757	3,285
Grand Total	15,091	73,482	21,792	94,288	167,210	718,493	3,607	14,922	207,700	901,185

*Kutupalong RC includes 14,277 registered refugees of 2,617 families & Nayapara RC includes 19,895 registered refugees of 3,704 families

**This represents refugees residing outside formal camp boundaries

Creation date: 15 November 2018 Sources: UNHCR Feedback: bgdcoim@unhcr.org

Population figures by specific needs

Camp	Families with separated children	Families with unaccompanied children	Families with a person with disability	Families with older person at risk	Families with older person at risk with children	Families with people with serious medical condition	Single male parents with infants	Single female parent	Families with people with specific needs
Camp 26	170	54	281	358	114	215	81	2,191	3,247
Camp 15	236	60	354	592	199	460	63	1,607	3,209
Camp 1E	171	44	551	457	324	485	56	1,161	2,923
Nayapara RC	177	41	607	164	50	1,197	35	1,191	2,823
Camp 13	243	79	311	396	209	344	64	1,426	2,791
Camp 7	223	29	354	365	250	457	106	1,277	2,790
Camp 1W	164	32	395	447	216	451	66	1,257	2,753
Camp 3	194	59	374	366	286	317	65	1,421	2,657
Camp 24	177	73	301	287	121	257	43	1,640	2,637
Camp 4	245	90	197	297	201	280	100	1,489	2,558
Camp 9	149	73	384	397	262	489	95	1,051	2,541
Camp 10	126	79	383	338	242	509	93	1,040	2,428
Camp 8E	152	69	339	367	241	411	83	1,064	2,323
Camp 2E	161	52	268	250	201	306	52	1,196	2,218
Camp 18	152	62	238	222	167	294	81	1,141	2,083
Camp 5	163	71	214	291	165	214	59	1,096	1,969
Camp 11	168	61	266	293	157	230	66	1,065	1,967
Camp 14	119	46	185	314	138	305	43	970	1,899
Camp 6	162	43	221	242	126	324	39	821	1,821
Camp 2W	113	17	280	237	115	262	62	827	1,730
Camp 8W	95	36	239	273	151	294	80	752	1,707
Kutupalong RC	53	17	343	89	34	773	10	540	1,535
Camp 12	81	34	143	205	103	139	32	773	1,421
Camp 19	122	33	191	220	81	118	46	764	1,416
Camp 16	92	22	168	202	81	159	35	704	1,319
Camp 17	107	20	138	147	79	120	38	685	1,195
Camp 22	69	17	159	156	77	154	16	582	1,120
Camp 27	55	13	100	88	34	63	21	733	1,029
Camp 23	50	12	73	97	43	69	11	753	1,021
Camp 21	66	23	110	96	32	106	35	514	900
Camp 25	38	23	75	83	33	87	18	495	756
Camp 20	26	12	92	68	47	75	20	296	572
Camp 4 Extension	20	14	54	41	34	48	13	182	382
Camp 20 Extension	26	13	44	37	25	41	12	143	298
No camp	20	6	26	41	12	22	11	136	242
Total	4,385	1,429	8,458	8,523	4,650	10,075	1,750	32,983	64,280