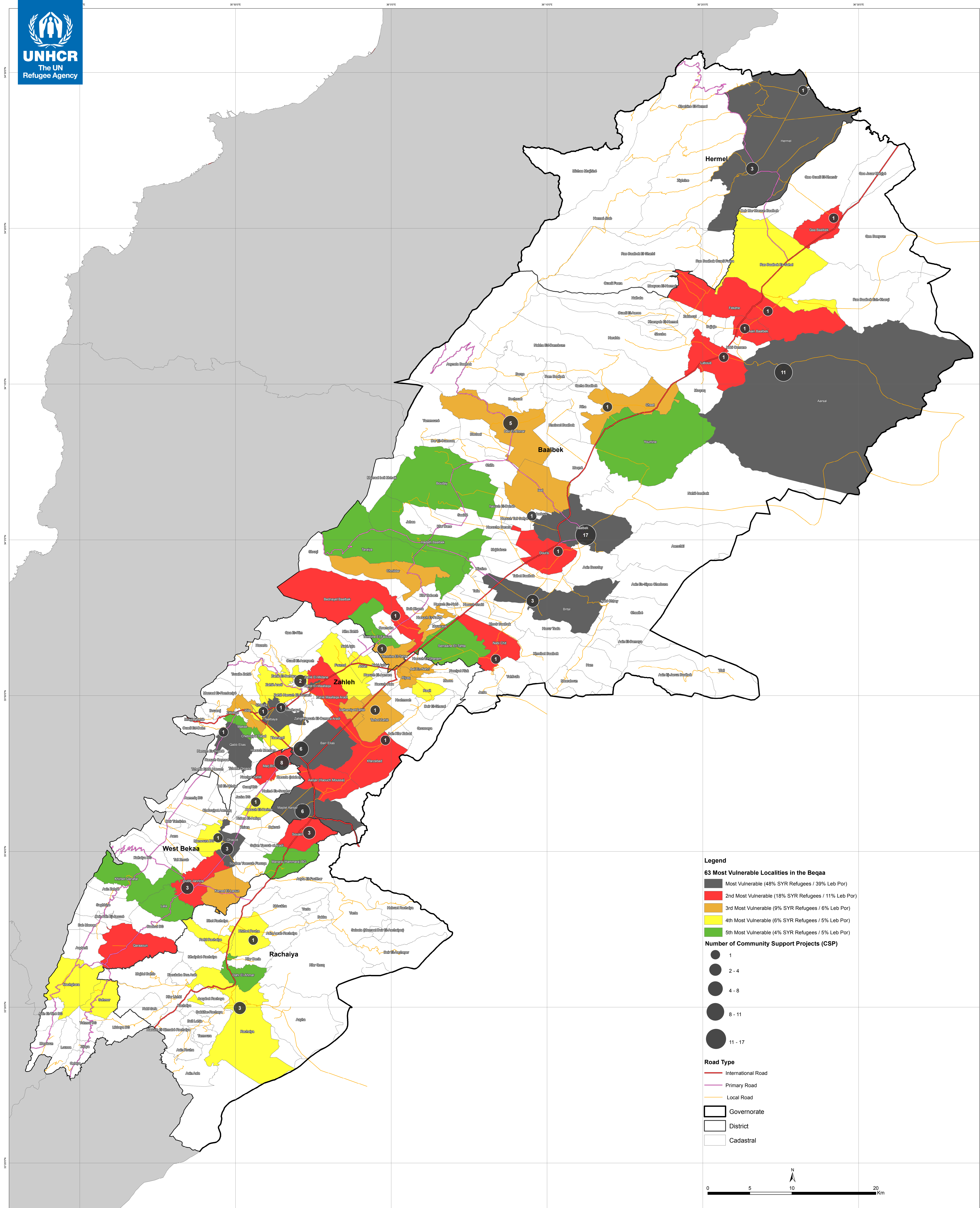


SYRIA REFUGEE RESPONSE

2013 Community Support Projects

Reaching The Most Vulnerable Localities in Beqaa



Calculation of the Most Vulnerable Localities was based on the following data sources:

- 1-Cadastral Boundary Shapefile which includes the 3rd admin level population distribution. The source of the shapefile is the CDR (Council for Development and reconstruction)
- 2-UNDP study of 2008. It states that 28.55% of the Lebanese population is estimated to be living under 4USD/capita/day based on data collected in 2004.
- The poverty estimates from this study gives break down on "combined Caza" level (admin level 2), this is assumed to be same for all the municipalities under the caza boundaries.
- 3- The refugee population distribution. This data is frequently by UNHCR registration unit.

The top quintile of the vulnerability mapping includes 229 localities (63 in the Beqaa)

LOCATION DIAGRAM



The boundaries, names and designations used in this map, do not imply official endorsement of the United Nations or UNHCR.

All data used in this map are the best available at the time of map production.

GIS & Mapping by UNHCR.
For more information about mapping, contact Jad Ghosn at ghosn@unhcr.org or Maroun Sader at sader@unhcr.org

Map Production Date: 11 March 2014
Preferable Print size A1