

Camp profile

Al-Obaidi Refugee Camp, Al-Qaim, Anbar, Iraq

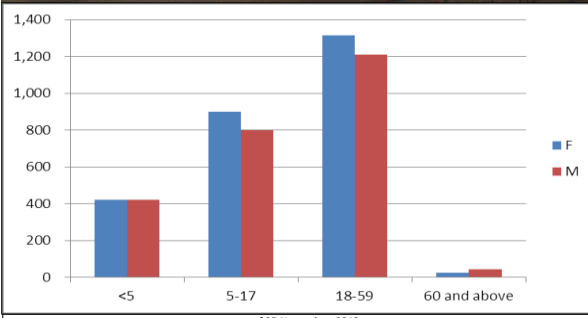
Camp opened: 27.06.2013

As of 25 Nov. 2013



Geographic Snapshot and Contextual Background

GPS coordinates:	41.219072 E , 34.417309 N
Region and State:	Al-Obaidy, Al -Qaim, Anbar, Iraq.
Size of camp area:	33,000 m ²
Pattern in Population Change:	Relocation from Camp 1 and Camp 2
Areas of Origin:	Majority is from Al Bu Kamal and Der Al-Zor.

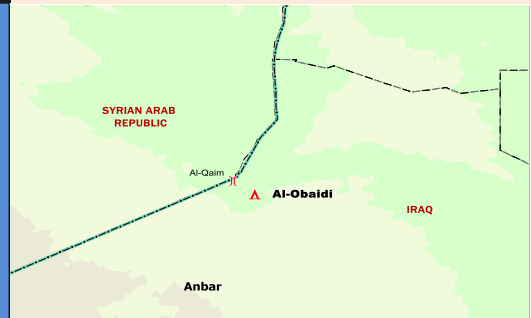


Refugee Population

approximately
1,980
(Individuals)

as of 25.11.2013

Planned capacity:
5,000
(Individuals)



Needs Met	Analysis	Minimum Sectoral Data (standard)	Minimum Sectoral Data
	Health: There is PHC in the camp providing primary health care.	▶ Extent PoCs have access to primary health care. 1 health centre for 20,000 persons.	▶ 1 health post.
	WASH: The sanitation is available in the camp.	▶ Liters of water/person/day: 20 ▶ Persons per latrine: <20 ▶ Persons per shower: <20	▶ Liters of water/person /day: 50-70 ▶ Persons per latrine: 6 ▶ Persons per showers: 6
	Protection: Registration Level 1 is completed. Verifications and updates ongoing.	▶ 100 % of PoC registered on individual basis.	▶ Population registered on family basis.
	CRIs: Refugees received CRI kits upon arrival in the camp, including distribution of winterization kits.	▶ 100% of households whose needs for basic and domestic items are met.	▶ 100 % of households whose needs for basic and domestic items are met.
	Shelter: Shelter and infrastructure established, improved and maintained.	▶ Average camp area per refugee 30 sq m ▶ 100% of households living in adequate dwellings.	▶ Average camp area per person 37.5 sq m ▶ 100 % of households living in adequate dwellings.

Minimum Sectoral Data Key:



= standard met or exceeded



= standard not met

