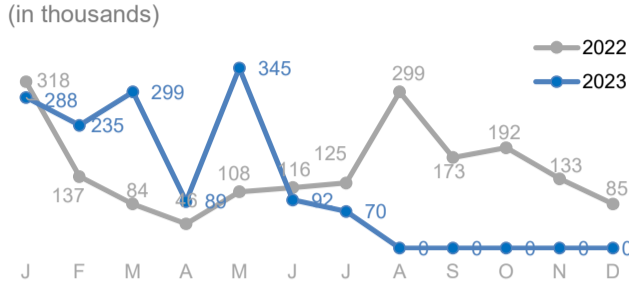


View the interactive dashboard here: <http://prmn-somalia.unhcr.org/>

**TOTAL DISPLACEMENTS**

**70,000** in July  
**1,419,000** (Jan - Jul 2023)  
**1,816,000** (Jan - Dec 2022)

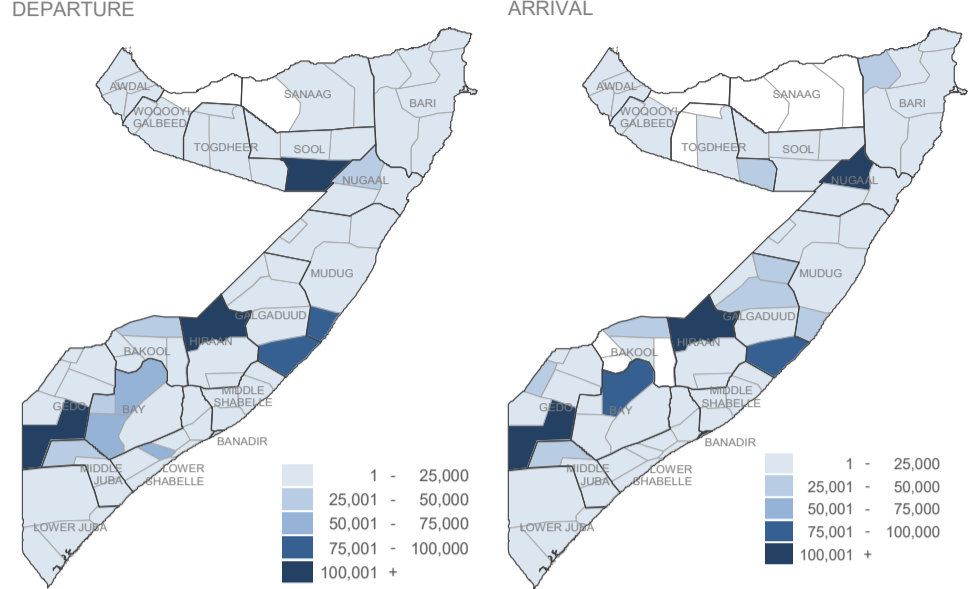
The UNHCR-led PRMN implemented in partnership with NRC reported 70,000 new internal displacements in the month of July 2023. Out of these, 37,000 were caused by conflict or insecurity, 30,000 were due to drought, 500 were due to floods and 2,100 were displaced due to other reasons



**BY REGION (Jan - Jul 2023)**

| DEP             | ARR               |
|-----------------|-------------------|
| Hiraan          | 265,280   267,050 |
| Lower Shabelle  | 125,440   36,260  |
| Middle Shabelle | 56,280   31,330   |
| Gedo            | 185,350   218,360 |
| Bay             | 152,620   109,890 |
| Bari            | 23,480   77,280   |
| Lower Juba      | 27,700   33,960   |
| Galgaduud       | 106,600   159,800 |
| Mudug           | 94,330   34,720   |
| Bakool          | 57,550   48,200   |
| Sanaag          | 3,330   2,430     |
| Middle Juba     | 36,700   42,110   |
| Banadir         | 2,090   123,680   |
| Awdal           | 8,130   4,270     |
| Togdheer        | 17,070   52,350   |
| Sool            | 204,880   41,540  |
| Nugaal          | 49,060   134,720  |
| Woq. Galbeed    | 3,590   1,530     |

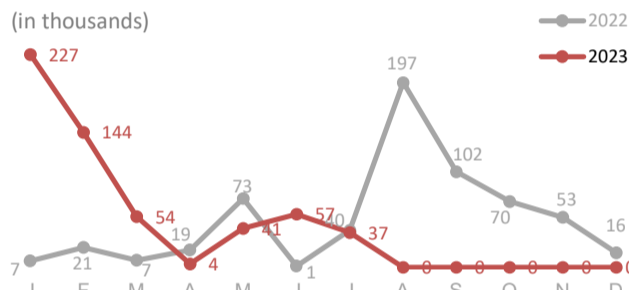
**BY DISTRICT (Jan - Jul 2023)**



**CONFLICT / INSECURITY DISPLACEMENTS**

**37,000** in July  
**569,000** (Jan - Jul 2023)  
**607,000** (Jan - Dec 2022)

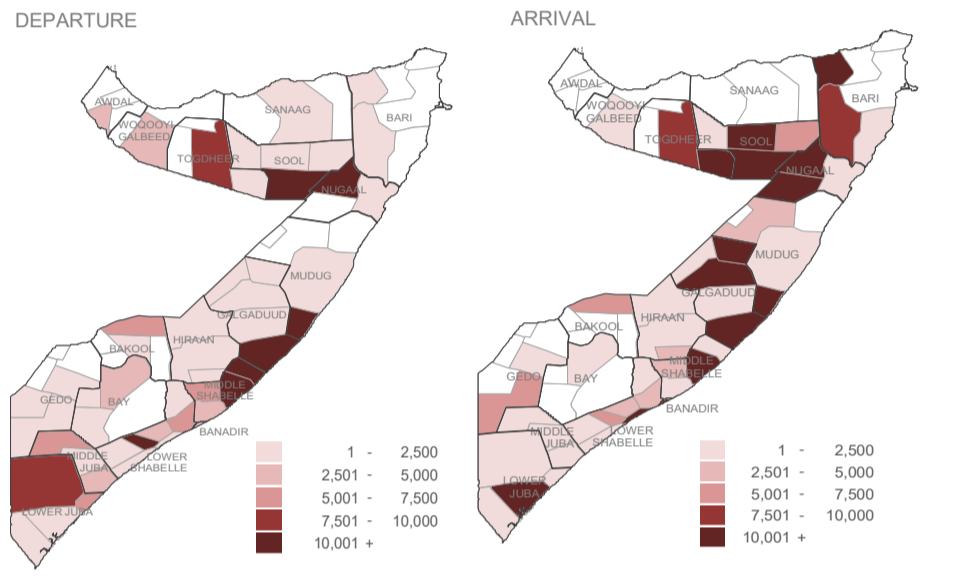
Major displacements in July occurred in Middle Shabelle (16,976) and Lower Shabelle (6,033) regions particularly due to military offensive activities.



**BY REGION (Jan - Jul 2023)**

| DEP             | ARR              |
|-----------------|------------------|
| Lower Shabelle  | 50,000   26,280  |
| Bay             | 4,100   1,260    |
| Galgaduud       | 96,790   149,900 |
| Gedo            | 3,400   6,220    |
| Bakool          | 5,410   5,400    |
| Lower Juba      | 15,830   18,500  |
| Sool            | 196,330   37,660 |
| Sanaag          | 60   1,320       |
| Middle Juba     | 9,300   3,560    |
| Togdheer        | 10,970   46,980  |
| Mudug           | 81,870   29,760  |
| Banadir         | 290   51,710     |
| Middle Shabelle | 46,560   22,690  |
| Hiraan          | 1,330   3,130    |
| Bari            | 10   52,540      |
| Nugaal          | 39,020   110,950 |
| Awdal           | 3,860   0        |
| Woq. Galbeed    | 3,530   790      |

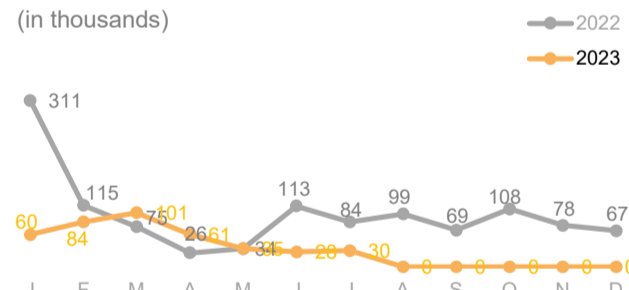
**BY DISTRICT (Jan - Jul 2023)**



**DROUGHT RELATED DISPLACEMENTS**

**30,000** in July  
**399,000** (Jan - Jul 2023)  
**1,179,000** (Jan - Dec 2022)

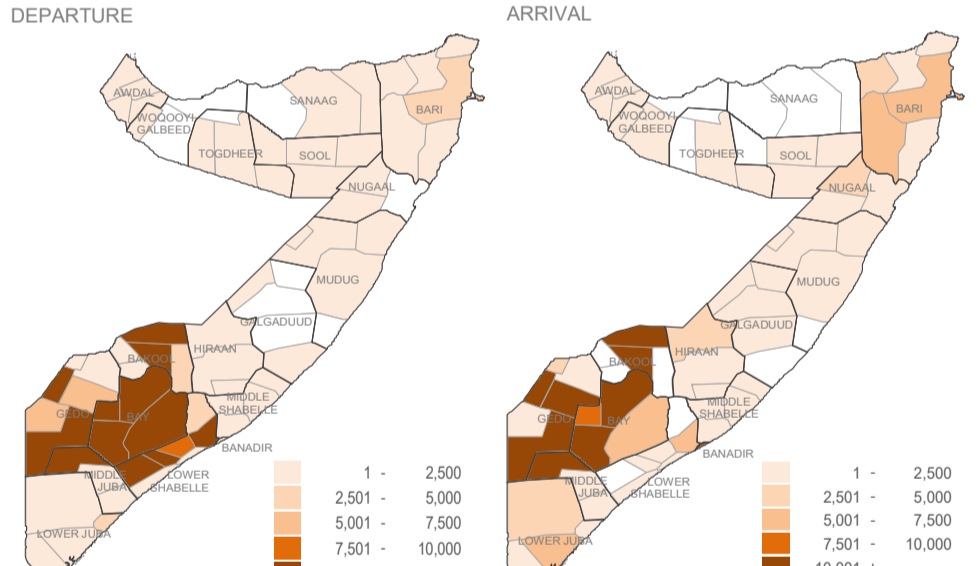
The highest displacements in July owing to drought were recorded in Gedo (9,967), Bay (5,305) Bari (2,657) and Bakool (2,445) regions.



**BY REGION (Jan - Jul 2023)**

| DEP             | ARR              |
|-----------------|------------------|
| Bay             | 123,760   84,900 |
| Bari            | 16,570   19,260  |
| Sanaag          | 2,740   990      |
| Bakool          | 50,720   41,690  |
| Awdal           | 3,080   3,080    |
| Sool            | 4,170   760      |
| Gedo            | 72,600   101,800 |
| Lower Shabelle  | 74,470   9,010   |
| Mudug           | 4,030   3,560    |
| Togdheer        | 3,580   2,060    |
| Hiraan          | 3,040   3,080    |
| Nugaal          | 400   4,560      |
| Lower Juba      | 10,510   13,980  |
| Woq. Galbeed    | 30   710         |
| Middle Juba     | 23,680   34,770  |
| Banadir         | 140   70,150     |
| Middle Shabelle | 4,660   3,720    |
| Galgaduud       | 1,250   1,340    |

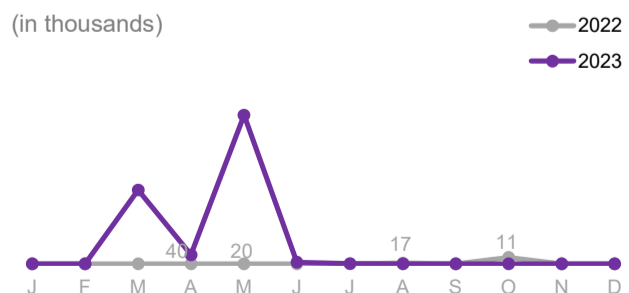
**BY DISTRICT (Jan - Jul 2023)**



**FLOOD DISPLACEMENTS**

**0** in July  
**418,400** (Jan - Jul 2023)  
**13,100** (Jan - Dec 2022)

The highest displacements in July owing to floods were recorded in Bari (302) and Middle Shabelle (107) regions



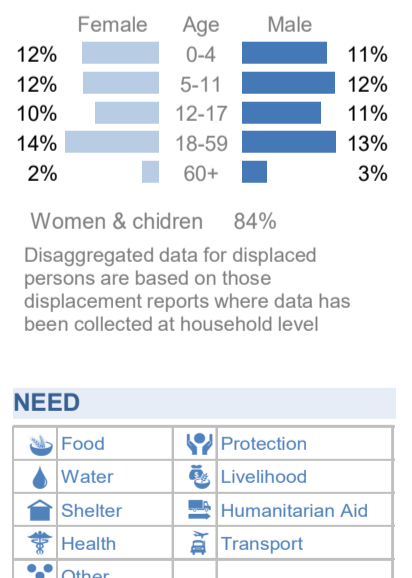
**BY REGION (Jan - Jul 2023)**

| DEP             | ARR               |
|-----------------|-------------------|
| Hiraan          | 260,860   260,800 |
| Lower Shabelle  | 320   320         |
| Middle Shabelle | 5,030   4,920     |
| Gedo            | 100,450   100,860 |
| Lower Juba      | 1,010   1,050     |
| Bari            | 4,720   5,060     |
| Mudug           | 1,330   1,330     |
| Banadir         | 1,490   1,630     |
| Middle Juba     | 3,230   2,780     |
| Galgaduud       | 8,550   8,550     |
| Bakool          | 10   10           |
| Bay             | 22,340   22,340   |
| Awdal           | 1,100   1,100     |
| Sool            | 0   0             |
| Woq. Galbeed    | 30   30           |
| Sanaag          | 300   0           |
| Togdheer        | 1,680   1,680     |
| Nugaal          | 5,920   5,930     |

**PRIORITY NEED ON ARRIVAL (July in %)**

| Region          | Food | Water | Shelter | Health | Protection | Transport | Other |
|-----------------|------|-------|---------|--------|------------|-----------|-------|
| Awdal           | 10   | 1     | 39      | 50     |            |           |       |
| Bakool          | 96   |       |         |        |            |           | 4     |
| Banadir         | 31   | 1     | 4       | 62     |            |           | 2     |
| Bari            | 53   |       | 43      | 4      |            |           |       |
| Bay             | 98   |       | 1       |        |            |           | 1     |
| Galgaduud       | 94   |       | 6       |        |            |           |       |
| Gedo            | 48   |       | 49      | 3      |            |           |       |
| Hiraan          | 45   |       | 33      | 19     |            |           | 2     |
| Lower Juba      | 83   |       | 13      | 1      | 2          |           | 1     |
| Lower Shabelle  | 28   |       | 1       | 2      | 42         | 26        | 1     |
| Middle Juba     | 99   |       |         |        |            |           |       |
| Middle Shabelle | 90   |       | 4       | 2      | 4          |           | 1     |
| Mudug           | 88   |       |         | 4      | 1          | 7         |       |
| Nugaal          | 23   | 2     | 46      | 2      | 13         |           | 13    |
| Sanaag          | 15   | 30    |         | 25     | 31         |           |       |
| Sool            | 26   |       | 73      |        |            |           |       |
| Togdheer        | 34   |       | 64      |        | 1          |           |       |
| Woq. Galbeed    | 41   | 13    | 3       |        | 41         |           | 2     |

**AGE & GENDER (2023)**



**About PRMN**

The PRMN (Protection & Return Monitoring Network) is a UNHCR-led project which identifies and reports on displacements (including returns) of populations in Somalia. The network also identifies and reports on protection risks and incidents underlying such movements. Only figures collected by PRMN are reported above. Not all displacements in Somalia are captured. This dashboard should be read in conjunction with the Notes on PRMN Methodology (<https://data2.unhcr.org/en/documents/details/53888>) which outline the approach and certain limitations. The figures shown are for numbers of individuals and are based on interviews with key informants and/or displaced households at destination (unless otherwise noted). Further information and datasets available on request use contact below.



UNHCR is grateful for the generous contributions of donors who have directly contributed to the UNHCR Somalia operation in 2023

