

**780,663**

Total refugees in camps and sites (90% of 880,000 refugees registered in Ethiopia)

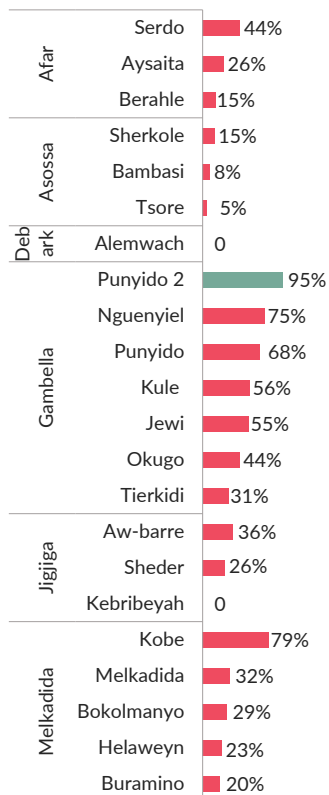
**146,732**

Households (HHs)  
Average HH size : 5

**22**

Active refugee camps and sites

% of HHs living in adequate dwelling by camp and site



## Impact indicator

**40%** of households living in adequate dwelling

58,959 HHs  
313,681 Individuals



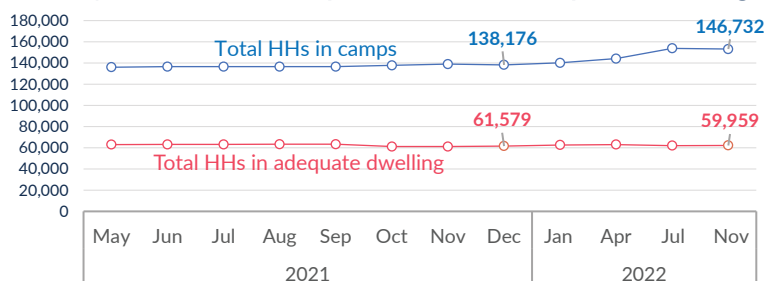
**60%** of households living in inadequate dwelling

87,773 HHs  
466,982 Individuals

Standard 100%

Acceptable (≥95%)    Unacceptable (94% - 80%)    Critical (≤79%)

## Trends | Total HHs in camps and HHs in adequate dwelling



## Summary of shelter interventions by location

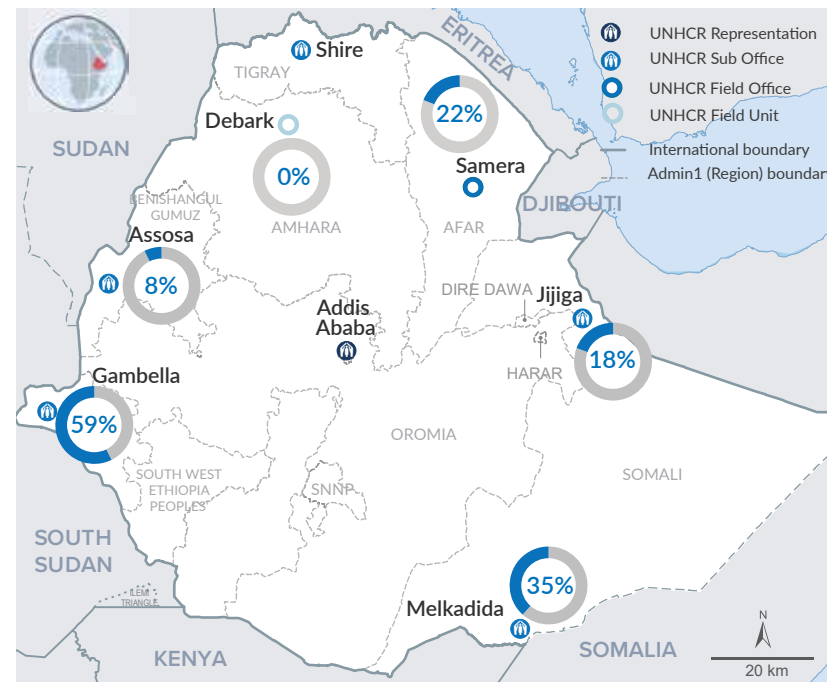
Locations	Total HHs	HHs in adequate dwelling	Emergency shelter			Transitional shelter			Shelter maintenance			CBI Shelter		
			Planned	Achieved	% Achieved	Plan'd	Achv'd	% Achv'd	Plan'd	Achv'd	% Achv'd	Plan'd	Achv'd	% Achv'd
Afar	11,091	2,428	692	692	100%	534	317	59%	30	30	100%	-	-	-
Asossa	17,143	1,302	1,513	1,428	94%	41	41	100%	-	-	-	106	73	69%
Debarke	6,134	100	3,113	3,113	100%	314	100	32%	-	-	-	-	-	-
Gambella	73,253	42,867	1,854	1,854	100%	459	456	99%	820	755	92%	-	-	-
Jigjiga	7,724	1,424	-	-	-	-	-	-	-	-	-	614	-	0%
Melkadida	31,387	10,838	902	592	66%	68	10	15%	-	-	-	-	-	-
<b>Total</b>	<b>146,732</b>	<b>58,959</b>	<b>8,074</b>	<b>7,679</b>	<b>95%</b>	<b>1,416</b>	<b>924</b>	<b>65%</b>	<b>850</b>	<b>785</b>	<b>92%</b>	<b>720</b>	<b>73</b>	<b>10%</b>

Partnership

Government of Ethiopia  
Refugees and Returnees Service (RRS)

Partners  
AHA, ANE, SEE

## % of HHs living in adequate dwelling by location



The boundaries and names shown and the designations used on this map do not imply official endorsement or acceptance by the United Nations. \* Final boundary between the Republic of Sudan and the Republic of South Sudan; and between Ethiopia and Somalia has not yet been determined.

UNHCR in collaboration with Refugee Returnee Service (RRS) and partners provides emergency shelters, site development, and transitional shelter solutions to both refugees and asylum seekers in all sites.

### Strategic Objectives:

- Enable refugees to live dignified lives in secure settlements with greater opportunities for self-reliance.
- Enhancing refugee's access to adequate housing and improved living conditions.
- Engagement of refugee and host communities in provision and design of shelter solutions.
- Foster collaboration on shelter and settlement sector response with development partners and private the sector in line with the Global Compact on Refugees (GCR) and the Comprehensive Refugee Response Framework (CRRF).

