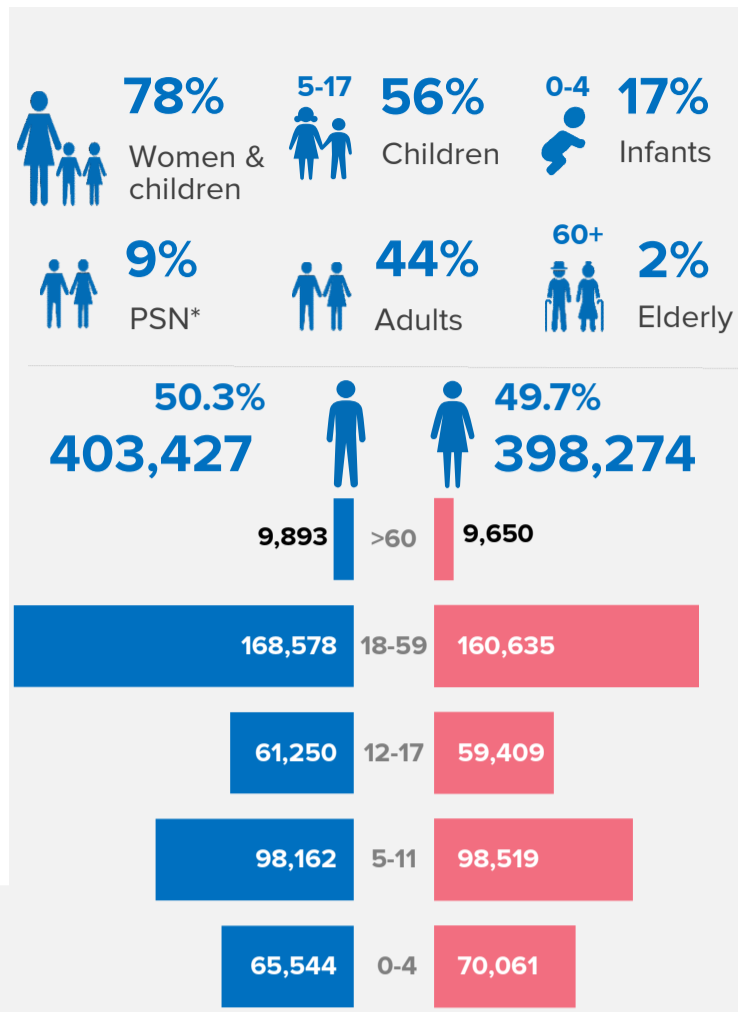
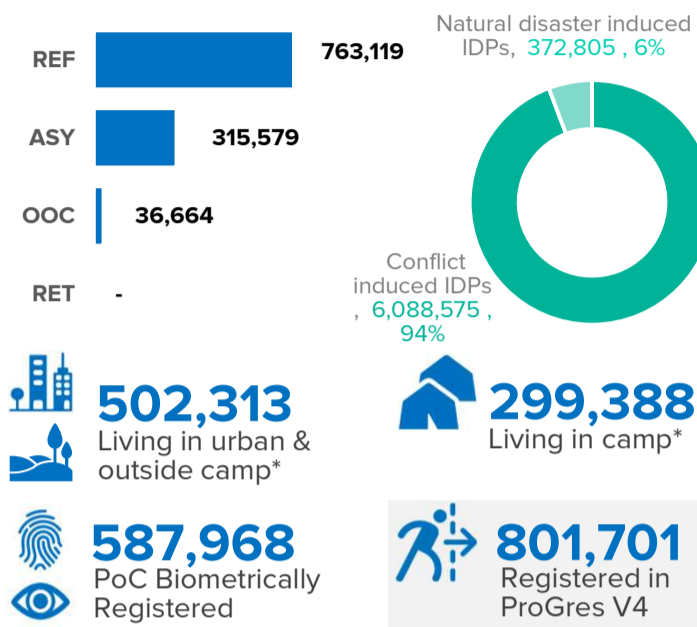


KEY FIGURES

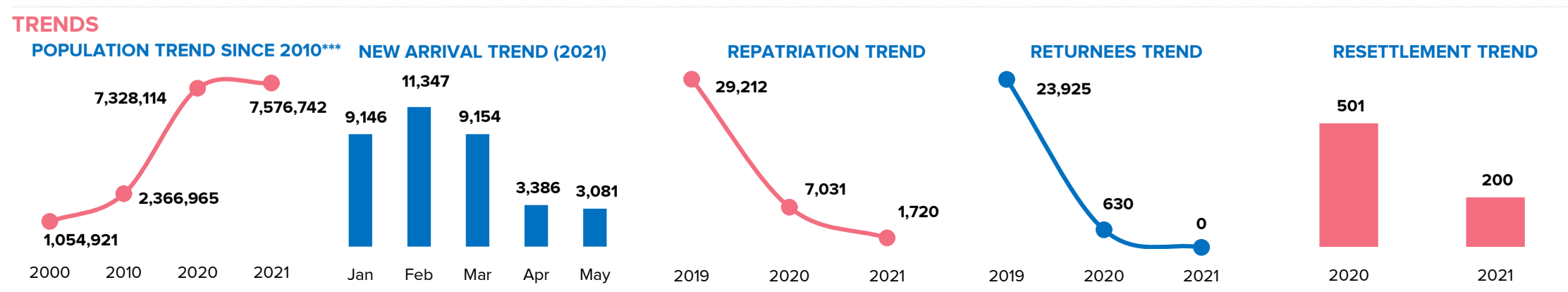
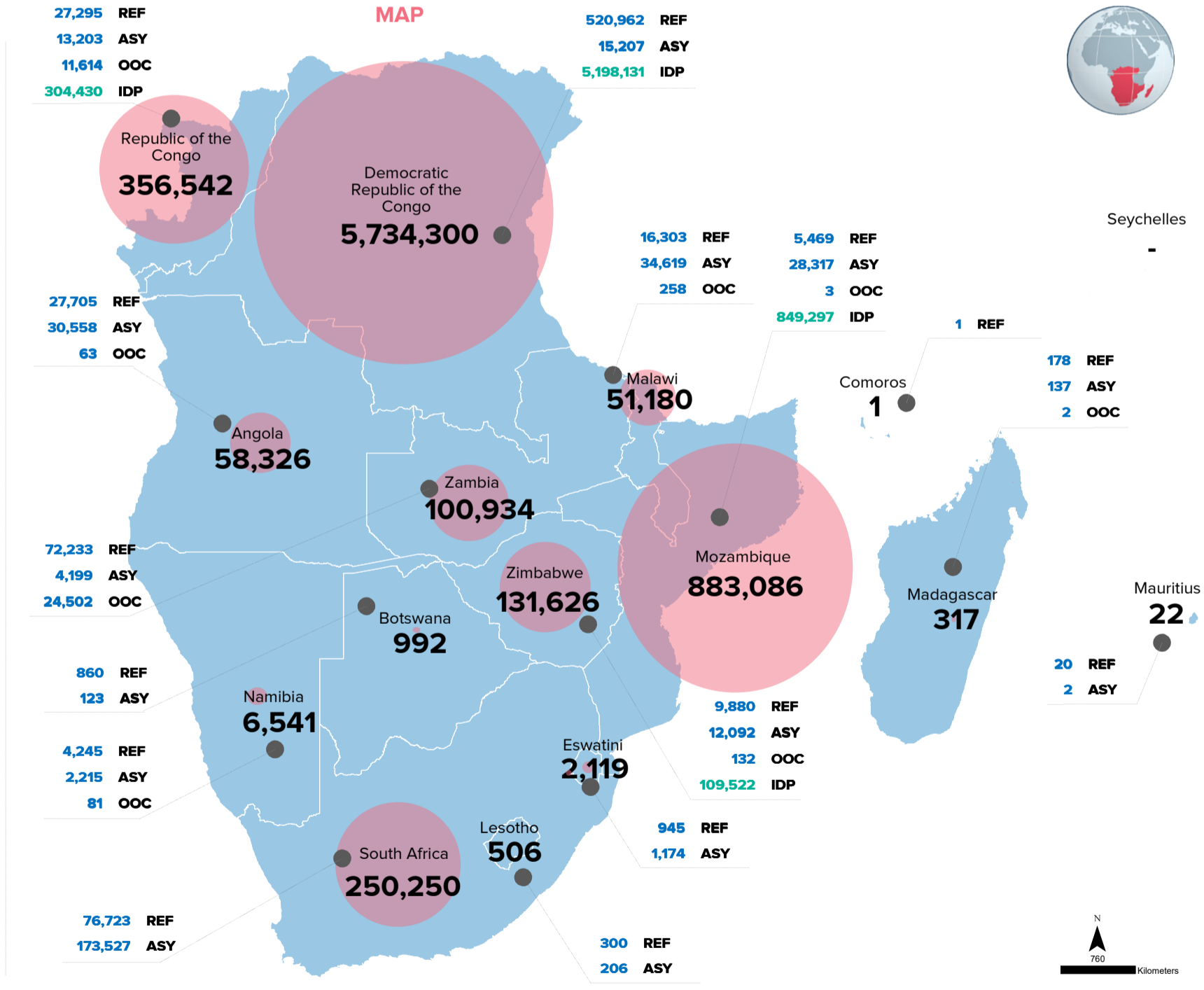
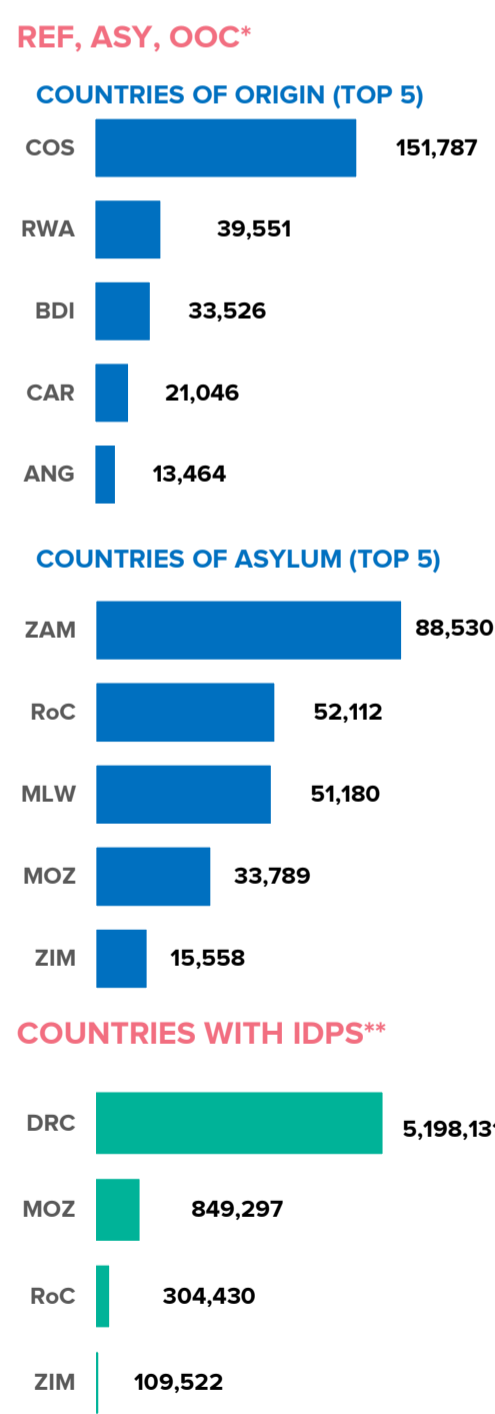
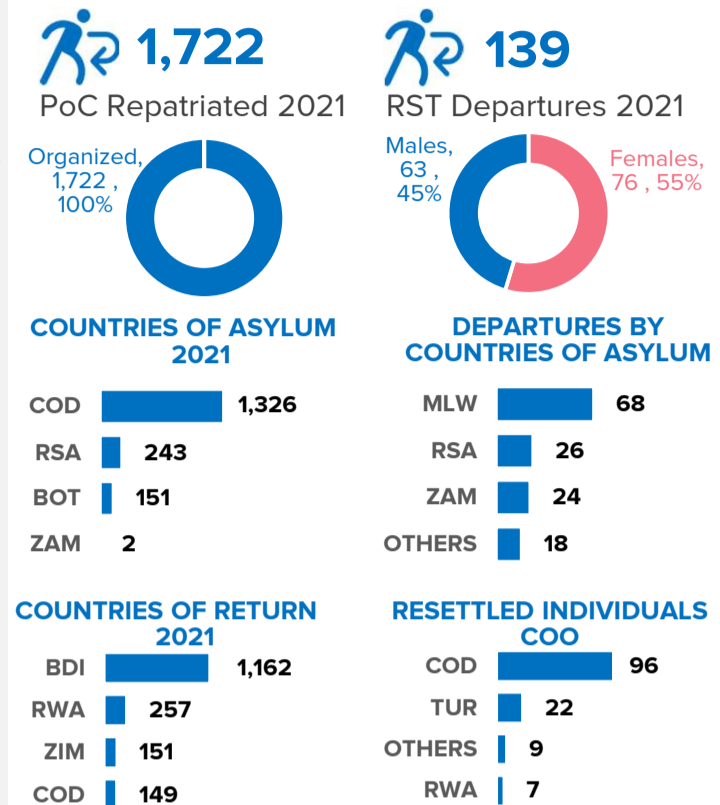
AGE & GENDER (POC registered in ProGres V4)

CONTEXT



RBSA Population Statistics are compiled monthly using data from ProgresV3/V4 and external government datasets. External data are statistics as of 31 May 2021 for IDP, IDP Returnees, Repatriation, Returnees, NIIIS data from South Africa and Self Settled from Angola, Zambia, DRC and Zimbabwe which is using Progres V3 data.

DURABLE SOLUTIONS



Data sources: Government, IOM, UNHCR *Refugees, Asylum-seekers, Others of concern ***Figure without returnees For more information or to contribute, UNHCR RBSA DIMA (rsarbdima@unhcr.org) **In addition to 756,014 IDPs reported in north Mozambique (DTM R12 as of 12 April) a total arrivals of 64,099 originated from Palma district have been recorded from 13 April to 31st May (ETT)