



Performance Snapshot

Quarter 1

Uganda Refugee Response Plan (RRP) 2020-2021

January - March 2021



138,460
Refugees & Asylum Seekers
39,660 HHs

Nakivale Refugee Settlement
Mbarara Sub-Office



29
Partners

Sector	Actual status per key indicator	Target/Standard (21')	Actual against annual target or standard
Education	59% children of school going age enrolled in primary school (Based on 2020 Q1 data)	100%	
	The pupil teacher ratio for primary schools was 1:76 (Based on 2020 Q1 data)	1:71	
Environment & Energy	# households using alternative and/or renewable energy(NTR Q1)	15,608 (target) 1/HH (standard)	
	# hectares of forests, wetlands, riverbanks and lakeshores protected and restored(NTR Q1)	179 ha	
Food Security	117,227 refugees receiving food assistance through cash transfers	138,460 Individuals	
	54.4% of HH with poor or borderline Food Consumption Score	20% <20% (standard)	
Health & Nutrition	The severe Acute Malnutrition recovery rate was 77%	75% (target) > 75% (standard)	
	The under-five mortality rate was 0.28 per 1,000 children	0.1 (target) < 1.5 (standard)	
Livelihoods & Resilience	# households received emergency livelihood support(NTR Q1)	19,182 HHs	
	6,245 refugees received financial literacy training	2,000 Individuals	
Child Protection	3,214 children participating in community-based activities	23,210 Individuals	
	# SGBV survivors received appropriate multi-sectoral support(NTR Q1)	322 Individuals	
Protection	367 refugees received psychosocial support	8,450 Individuals	
	# refugees received legal assistance and legal aid services(NTR Q1)	18,000 Individuals	
Shelter, Settlement & NFI	# of refugee households with specific needs assisted with semi-permanent shelter (NTR for Q4)	1,605 HHs	
	# of newly arrived refugee households provided with the minimum emergency shelter support (NTR for Q4)	746 HHs	
Water, Sanitation & Hygiene	13.9 litres per person per day	20 litres (target) 20 litres (standard)	
	80% household latrine coverage	80% (target) ≥ 85% (standard)	
Cash-Based Interventions	12,348 households received any forms of cash and voucher assistance (including unconditional cash grant)	27,000 HHs	
	1,625 of households receiving cash and voucher assistance for basic needs (multipurpose cash)	6,000 HHs	



Operational Presence

Quarter 1

Nakivale Refugee Settlement

January - March 2021



05

National partners



19

International NGOs



03

UN Agencies



02

Government Partners



Partner/ Sector	Education	E&E	Food Security	Health & Nutrition	Livelihood	Protection	CP	SGBV	SSNFI	WASH	CBI
AIRD									IP	OP	
Alight					OP	IP	IP	IP			
COVID					OP						
DRC					OP						OP
EWB										OP	
FRC					OP						
HFU		OP	OP	OP	OP						OP
HI	OP										
HIJRA										OP	
IDLG	GP	GP		GP							
MALTESER										OP	
MTI				IP							
NRC	OP		OP		OP	OP					OP
NSAMIZI		IP								IP	
OPM	GP					GP	GP	GP			
OI					OP						
OXFAM										OP	
RHITES				OP							
TPO						OP					
TTR						OP					
UGAFODE					OP						
UGNET								OP			
UNICEF	A			A						A	
UNHCR	A	A		A		A	A	A	A	A	
URCS				OP	OP		OP				
WCC	OP										
WCH	OP										
WFP			A	A							A
WIU	IP										

A = United Nations Agency

GP = Government Partner

IP = Implementing Partner

OP = Operational Partner

African Initiative for Relief and Development

(AIRD)

Community Volunteer Initiative for Development (COVID)

Dannish Refugee Council(DRC)

Engineers without Borders (EWB)

Finnish Refugee Council(FRC)

Hunger Fighters Uganda (HFU)

Humanity and Inclusion (HI)

Isingiro District Local Government (IDLG)

Medical Teams International (MTI)

Norwegian Refugee Council (NRC)

Office of the Prime Ministrer (OPM)

Opportunity International (OI)

Regional Health Integration to Enhance

Services (RHITES)

Tutapona Trauma Rehabilitation (TTR)

Uganda Agency for Development Limited

(UGAFODE)

United Nations Children Emergency Fund

(UNICEF)

United Nations Refugee Agency (UNHCR)

War Child Canada (WCC)

War Child Holland (WCH)

World Food Programme (WFP)

Windle International Uganda (WIU)

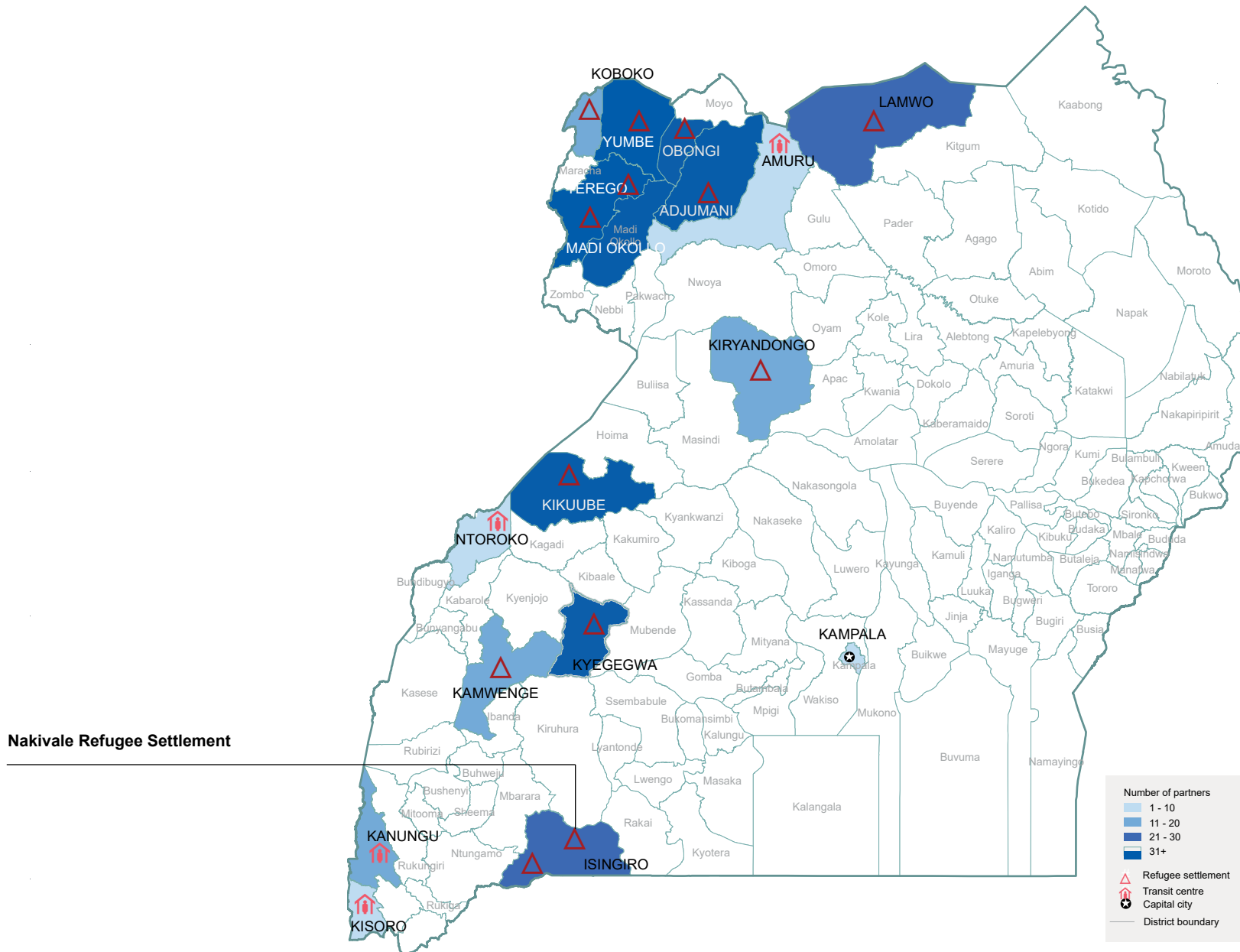


Operational Presence

Quarter 1

Map of Uganda Showing Location of Settlement

January - March 2021



The boundaries and names shown and the designations on this map do not imply official endorsement or acceptance by the United Nations