

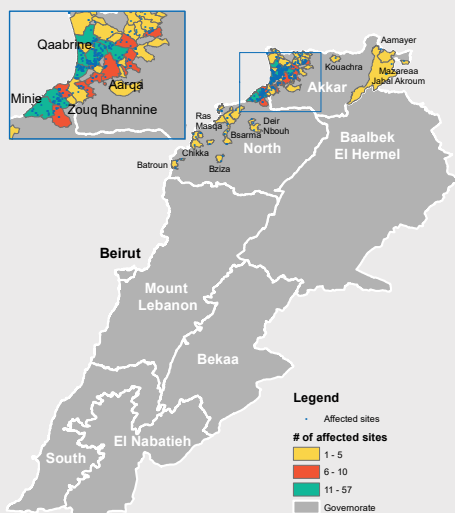


WINTER STORMS - SITUATION REPORT (SitRep) No.1

As of date: 12 November 2020

The winter storm season is underway in Lebanon. Heavy rains in early November have led to flooding and damages in informal settlements, collective shelters and urban areas. The Rapid Needs Assessment Tool has so far been activated in the North only. Site assessments and monitoring are ongoing in all regions and needs are expected to increase. Rains, high winds, snow and colder temperatures are expected to continue through to February with impacts and needs anticipated to increase as the season progresses.

Sites affected by heavy rain in Nov 2020



Areas at highest risk of flooding and other storm impacts include (see page 3 for more information):

- Akkar in the North
- Baalbek-Hermel, Zahle, West Bekaa and in Bekaa
- Maarjayouen, Sour and Saida in the South
- Coastal areas of Beirut-Mount Lebanon

Small-scale emergencies and recurring low-level shocks, such as fires or floods in settlements, are addressed through **localized rapid response** mechanisms, with different regions streamlining their approach with **standard operating procedures (SOPs), processes and tools**.



16,275
People affected

171,428
People at risk



321
Sites affected

3,402
Informal settlements at risk
of flooding, snow coverage,
extreme cold

30,445
Shelters at
risk of
damage

Preparedness actions are underway

The LCRP Inter-Sector has initiated an exercise to **update available contingency stocks** in warehouses and storage sites in the field that can be dispatched to support storm response as needed. A gaps analysis will follow to identify where and what is available to inform planning in areas at highest risk.

Field teams and partners can review current contingency and warehouse stock availability using the **Contingency & Preparedness Dashboard** updated in real time:

<http://ialebanon.unhcr.org/Stocks/>

The distribution of shelter kits is ongoing by the Shelter Sector and is expected to conclude by end of November for all the areas expect in Aarsal where some delays are expected due to procurement of kits.

Emergency field focal points have reviewed and updated the **Rapid Needs Assessment Tool**, a **field driven and decentralized inter-agency tool** that offers humanitarian

partners a quick initial snapshot of the situation on the ground and immediate cross-sectoral needs at each assessed site. The tool can be used for both affected Syrian and Lebanese cohorts.

Rapid Needs Assessment (RNA) teams are established with inter-agency partners in each region and are ready **to be activated whenever displacement¹ occurs**. Refresher training sessions on the RNA Tool are being led by the Inter-Agency Information Management Team in all regions to re-familiarize partners with the tool and support new partners to use it.

Collaboration and coordination with the Disaster Risk Management (DRM) Unit under the Prime Ministers Office is ongoing. An emergency WhatsApp group has been established with the Ministry of Social Affairs, DRM and the LCRP to facilitate coordination during an emergency response. Weather forecast warnings and emergency reports are shared to ensure the field is ready to support. Areas of high risk are jointly prioritized for prevention interventions.

¹ either an influx or secondary displacement.

Impacts and response by region

North

Severe storms have affected an estimated 3,085 refugee families in Akkar and T5. As of 10 November, flooding caused damage in 257 informal settlements (220 in Akkar and 37 in T5) and 32 urban shelters (19 in T5 and 13 in Akkar). The RNA process has been activated and partners have completed assessments in 113 sites, with 346 households identified as in need of assistance so far and 10 informal settlements in need of relocation. Families have been supported through the distribution of shelter kits, blankets, mattresses, sleeping mats, baby kits, hygiene kits, kitchen sets and food parcels. An estimated 40 families have been temporarily relocated to nearby settlements in coordination with the Lebanese Red Cross and the Ministry of Social Affairs. Relocation options have been limited so some families are relocating through their own means.

Bekaa

Heavy rains have led to flooding in Aarsal and Terbo Zahle. As of 6 November, 4 informal settlements (3 in Aarsal and 1 in Terbo Zahle) are reported affected, with 16 refugee families (80 individuals) impacted and no families displaced so far. All affected sites and families have been assisted by WASH and Shelter partners and provided with core relief items, including mattresses and blankets.

South

Heavy rains in the South and Nabatieh have caused partial flooding in informal settlements and urban shelter damage in all districts, especially Saida and Marjaayoun. As of 12 November, 39 sites are reported affected, including 31 informal settlements, with some 137 Syrian families (712 individuals) impacted. While the RNA process has not been activated, partners are following up on referrals received to confirm flooding and damages. So far, 43 families have been supported with shelter kits and core relief items, such as mattresses and blankets.

BML

Recent heavy rains have led to flooding reports across BML. As of 5 November, 9 informal settlements and 12 sub-standard shelters in Baabda, Meten, Aley, Beirut, Chouf and Keserwane were reported flooded, with 31 refugee families (149 individuals) impacted. Three sites have been assisted so far (including 2 informal settlements and 1 collective shelter), with 8 families (34 individuals) receiving shelter kits so far.

For more information, please contact: Carol Sparks,
Senior Inter-Agency Coordination Officer, UNHCR –
sparks@unhcr.org

Field emergency focal points

North

Georges Estephan / Yasser Waris
Assistant Information Management Officer / Field Officer
UNHCR Tripoli Office
+961 70 008 408 / +961 76 182 633
estephan@unhcr.org / waris@unhcr.org

Beirut & Mount Lebanon

Bruno Stolze Lyrio / Dima Jamileh
Field Officer / Assist. Shelter & Wash officer
UNHCR S&K Building, Jnah, Beirut
+961 79 160 184 / +961 03 423 063
stolze@unhcr.org / jamileh@unhcr.org

Bekaa

Jean-Pierre Tuyishime / Haydar Hadad
Associate Field Officer / Shelter Associate
UNHCR South Office, Borj El Chmali
+961 70 455 344 / +961 71 910 338
tuyishim@unhcr.org / hadad@unhcr.org

South (Tyre)

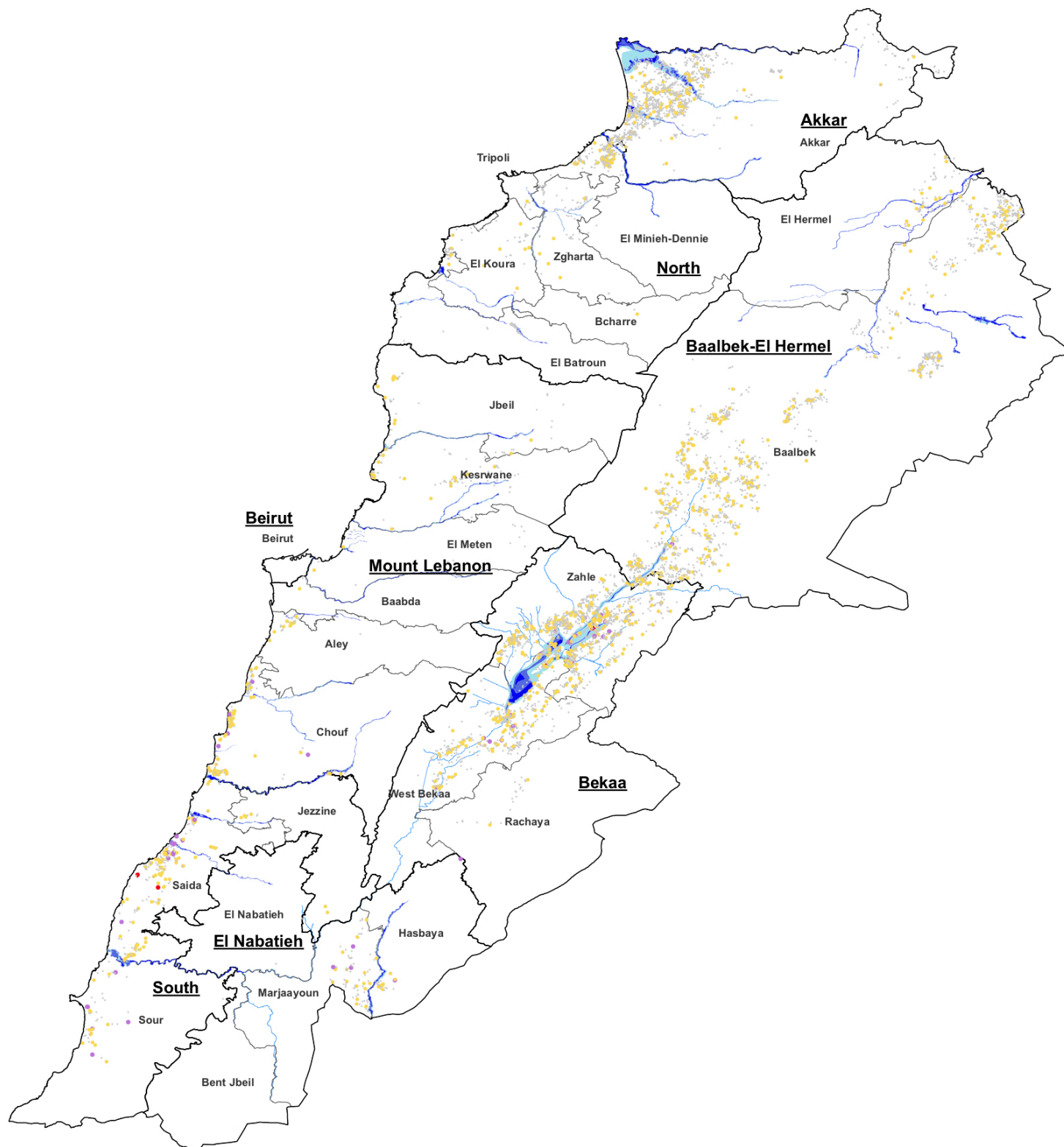
Jean-Pierre Tuyishime / Haydar Hadad
Associate Field Officer / Shelter Associate
UNHCR South Office, Borj El Chmali
+961 70 455 344 / +961 71 910 338
tuyishim@unhcr.org / hadad@unhcr.org

LCRP Emergency Response

- Localized rapid response tools and SOPs
- Central-level coordination support to scale up elements of the rapid response, harmonize processes (where needed) and provide overall reporting
- Contingency stocks updated to redirect stocks and capacities from different locations and support resupplying



Flood Risk Zones in Lebanon & Informal Settlements Reported Flooded Since 2018



Number of flood reports

- 0
- 1 (1,056)
- 2 (53)
- 3 (4)

Flood hazard

- Low
- Moderate
- High

- Litani River
- Governorate
- District



0 5 Km 10 20

This map has been produced by the Inter-Agency Information Management Unit of UNHCR based on maps and material provided by the Government of Lebanon for operational purposes. It does not constitute an official United Nations map. The designations employed and the presentation of material on this map do not imply the expression of any opinion whatsoever on the part of the Secretariat of the United Nations concerning the legal status of any country, territory, city or area or of its authorities, or concerning the delimitation of its frontiers or boundaries.

- Flood Hazard: Flood hazard mapping layer provided by the Lebanese National Council For Scientific Research (CNRS)
- Site Flooded: Data collected from 2018 during the IAMP mapping about the sites flooded during this period of the year

GIS & Mapping by UNHCR.

For more information about mapping; contact Jad Ghosn at Ghosn@unhcr.org, Maroun Sader at sader@unhcr.org