

SITUATION OVERVIEW

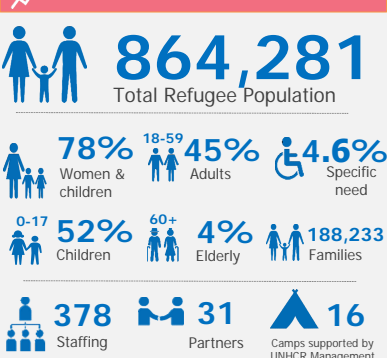
More than 864,200* Rohingya refugee women, men, girls and boys are hosted in Cox's Bazar District in Bangladesh, including 35,060 registered refugees who arrived in the 1990s (4%), and other unregistered Rohingya refugees who had settled in host communities prior to August 2017. Children make up 52% of the total refugee population and women and girls make up 51%.

The humanitarian situation in Cox's Bazar has been affected by the COVID-19 pandemic. In Cox's Bazar, only critical activities approved by the Refugee Relief and Repatriation Commissioner (RRRC) are possible in the camps for the time being. UNHCR continues to provide critical services focusing on Protection, Health, WASH, nutrition, fuel support (LPG) and other non-food items, and other activities as part of its communication with the community.

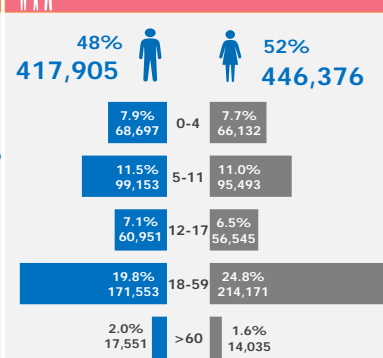
This dashboard monitors the progress being made to deliver protection and assistance activities with reference to selected indicators from UNHCR Bangladesh's 2020 country operations plan. It provides an overview for each strategic area of activity with cumulative key figures and monthly highlights.

*Refugee registration is an ongoing exercise which includes registration of new born, new arrivals and deceased individuals.

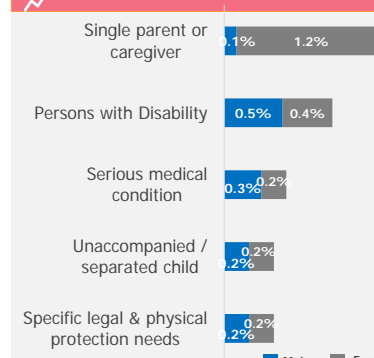
KEY POPULATION FIGURES



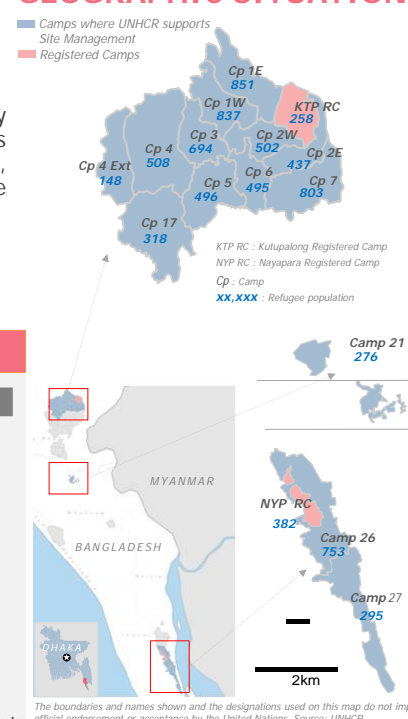
AGE & GENDER BREAKDOWN



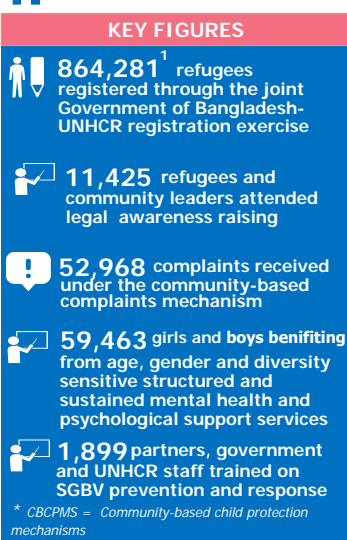
PEOPLE WITH SPECIFIC NEEDS



GEOGRAPHIC SITUATION



PROTECTION



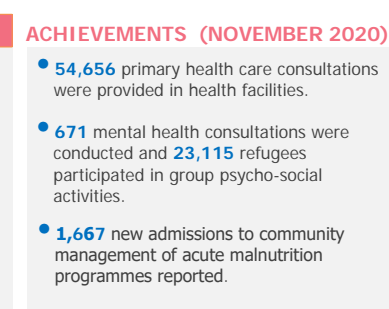
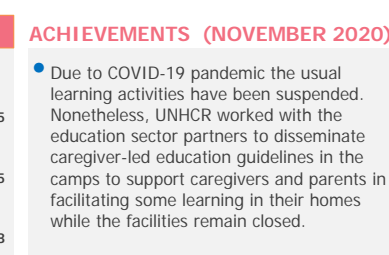
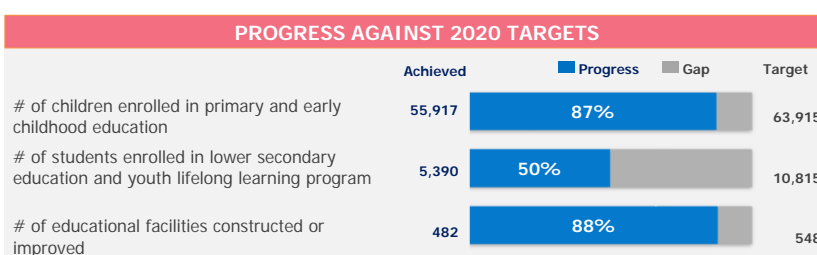
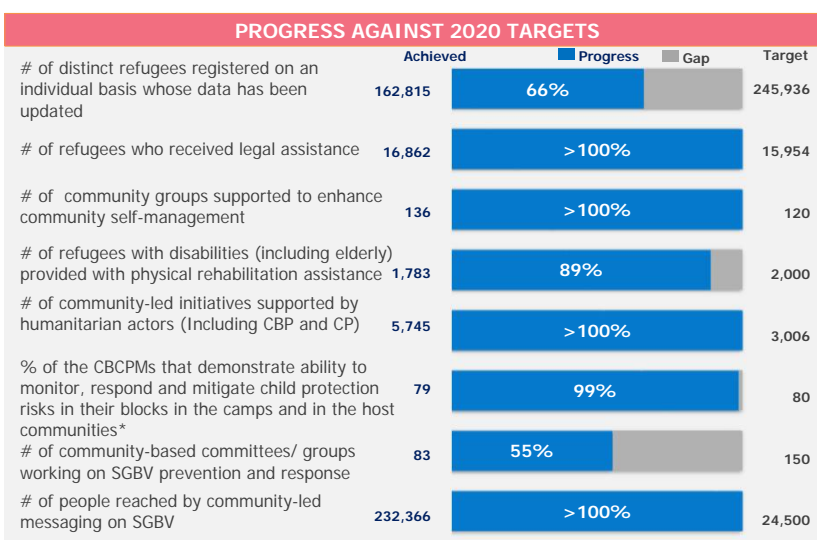
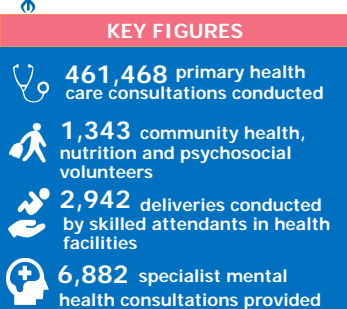
* CBCPMS = Community-based child protection mechanisms

¹ Cumulative figures since 26 June, 2018

EDUCATION



HEALTH & NUTRITION





WASH

KEY FIGURES

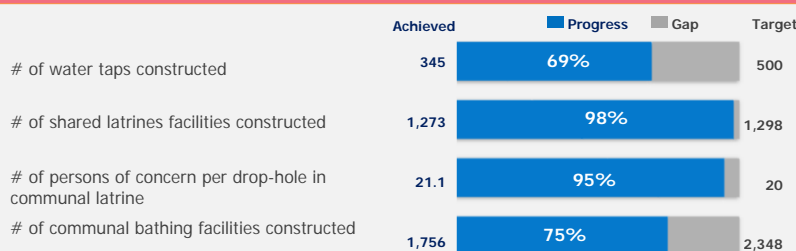
39,583 WASH facilities assessed during a sweep survey in 2019

574 Hygiene volunteers

1,273 WASH hygiene kits distributed

56,895 tube wells and latrines repaired, renovated and decommission

PROGRESS AGAINST 2020 TARGETS



ACHIEVEMENTS (NOVEMBER 2020)

- **262** WASH facilities have been constructed including, **2** water taps and **260** latrines.
- **166** communal bathing facilities were constructed.
- **7,567** WASH facilities were provided with some maintenance, including **1,433** tube wells and **6,134** latrines.

SHELTER

KEY FIGURES

15 km of roads and pathways

21 km of drainage

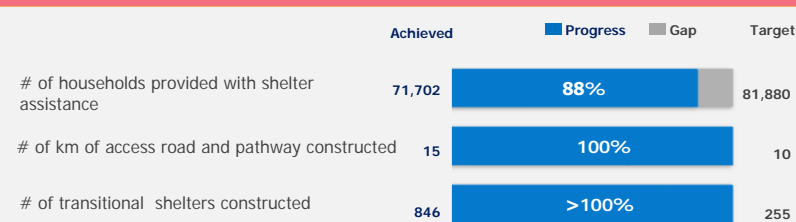
25 km of retaining structures

13 km of stairs

5.8 km of bridges constructed

87,795 shelter tie down kits distributed

PROGRESS AGAINST 2020 TARGETS



ACHIEVEMENTS (NOVEMBER 2020)

- **21,689** partial shelter repair and replacement kits distributed.
- **105** transitional shelters have been constructed.
- **16.7** km of infrastructures constructed, including **5** km of roads and pathways, **5** km of drainage, **2** km of drainage, **0.5** km of pedestrian bridges and **4.5** km of retaining structures.

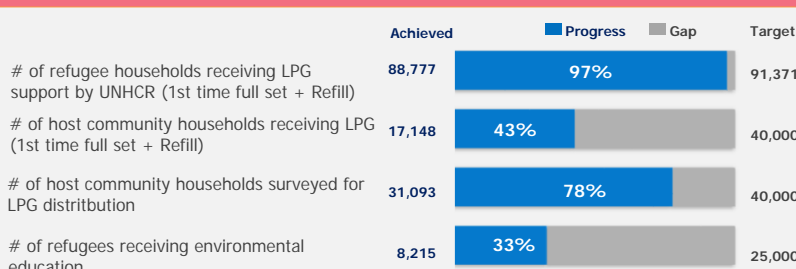
ENVIRONMENT & ENERGY

KEY FIGURES

31,093 host community households have been surveyed during LPG distribution assessment

72 conflicts with elephants successfully mitigated by trained ERT* members

PROGRESS AGAINST 2020 TARGETS



ACHIEVEMENTS (NOVEMBER 2020)

- **89** refugee households received 1st time LPG cylinder while LPG refills were distributed to **82,688** refugee households.
- **5,189** new host community households have received LPG.

NFI & SITE MANAGEMENT

KEY FIGURES

39,200 Emergency shelter and WASH kit (PDK) pre-positioned

16 camps managed by site management support agency partners

225,577 female menstrual hygiene kits distributed

PROGRESS AGAINST 2020 TARGETS



ACHIEVEMENTS (NOVEMBER 2020)

- **83,886** households received bathing and laundry soap.

SOCIAL COHESION

KEY FIGURES

5,863 host community and **7,521** refugee households are continuing to participate in livelihood programmes

845 host community and refugee households enrolled for skill development training for ensuring their self-reliance

PROGRESS AGAINST 2020 TARGETS



ACHIEVEMENTS (NOVEMBER 2020)

- **4,418** new refugee households included to be benefited from 2020 livelihood projects.
- **2,000** host community households have started their livelihood interventions with UPGP projects.

THANK YOU

UNHCR's humanitarian response in Bangladesh is made possible thanks to the generous support of donors who have contributed unrestricted funding to UNHCR's global operations, and to donors who have generously contributed directly to the UNHCR Bangladesh operations.

In 2020, continued generous support has been received from : **Australia, Canada, China, Denmark, the European Union, France, Germany, Ireland, Italy, Japan, the Republic of Korea, the Netherlands, New Zealand, Norway, Sweden, Switzerland, the United Kingdom, and the United States of America.**

UNHCR is sincerely grateful for the additional support received from many individuals, foundations, and companies worldwide including: **Bill & Melinda Gates Foundation, CERF, Education Cannot Wait, and Thani Bin Abdullah Bin Thani Al-Thani Humanitarian Fund.**