



FAO Resilience Unit for  
Eastern Africa

A value chain  
approach for  
economic  
integration and self  
reliance of refugees  
and host  
communities in  
Eastern Africa

July 13, 2020



## *Partnership with UNHCR*

---



The New York Declaration  
on Refugees and Migrants  
**with Comprehensive  
Refugee Response  
Framework (CRRF) & the  
global compact on refugees  
(GCR)**

**UNHCR-FAO MOU & 2019 joint  
workplan:**

- Coherent livelihood support
- FS & resilience info & analysis
- Nutrition sensitive quick impact
- **Self-reliance through value chains**
- Sustainability of natural resource use
- Safe access to energy

## FAOs history in response to forced migration



Food and Agriculture Organization  
of the United Nations

### FAO RESPONSE TO FORCED MIGRATION\* IN EAST AFRICA REGION 2012-2017

**60**

**Projects implemented since 2012**

In partnership with NGOs, GVT, UN sister agencies

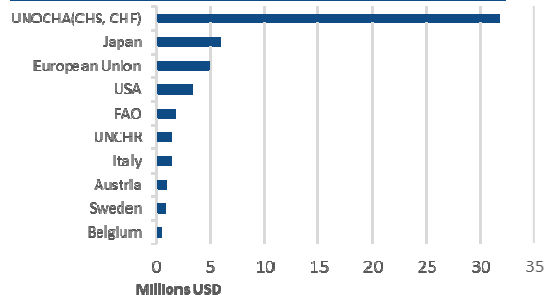
**\$54 m**

received since 2012 = \$9 M/year

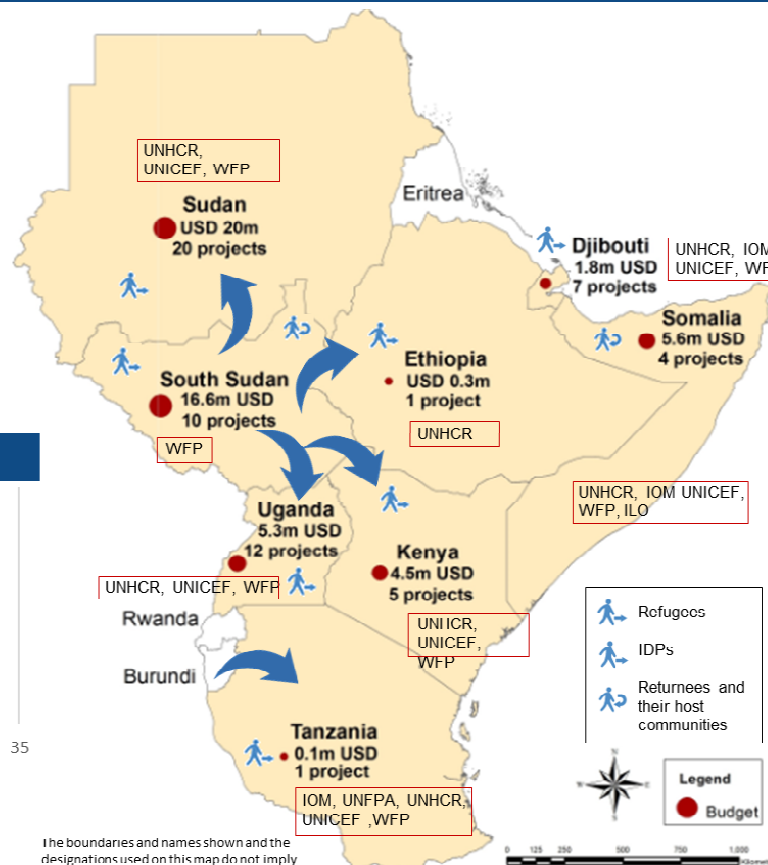


**\$9 = 1**  
beneficiary reached

#### Top 10 donors 2012-2017 to date



Most Frequent INGO Partnership: Danish Refugee Council, COOPI, Vétérinaires Sans Frontières



The boundaries and names shown and the designations used on this map do not imply official or endorsement or acceptance by the UN.



**1,000,000**

average beneficiaries\*  
reached per year with:



**Agricultural inputs/kits/tools**



**Livestock and small animals production**



**Fishing Kits**



**Cash Based Interventions**



**Training on best farming practices and animal husbandry**



**Rehabilitation of water structures**



**Animal Health Interventions**



**Provision of fuel efficient stoves**

#### FAO RESPONSE

- Increased production and productivity of crops and animals among refugees and host community households
- Increased protection of livestock through animal health support and feed provision
- Increased income generating activities for refugees
- SAFE: Safe access to fuel and energy is ensured
- Improved food and nutrition security of refugees, IDPs and host communities
- Better access to water through water harvesting structures for refugees host communities and livestock
- Strengthened FSL cluster coordination and access to information by partners.



## Intervention Theory of Change: The Problem

**Problem statement:** Reliance on *traditional rain-fed, subsistence agriculture* with *key market failings* to link rural producers to market opportunities and *inadequate service delivery* result in refugees and host communities remaining food, nutrition and income insecure

### Relationships

- Producers do not support one another
- Producer groups not registered
- Limited engagement with local authorities
- Gender barriers to equitable engagement
- Poor linkages & trust between producers, agro-input dealers & private sector
- Poorly developed networks
- Refugees not integrated in local economies

### Capacities

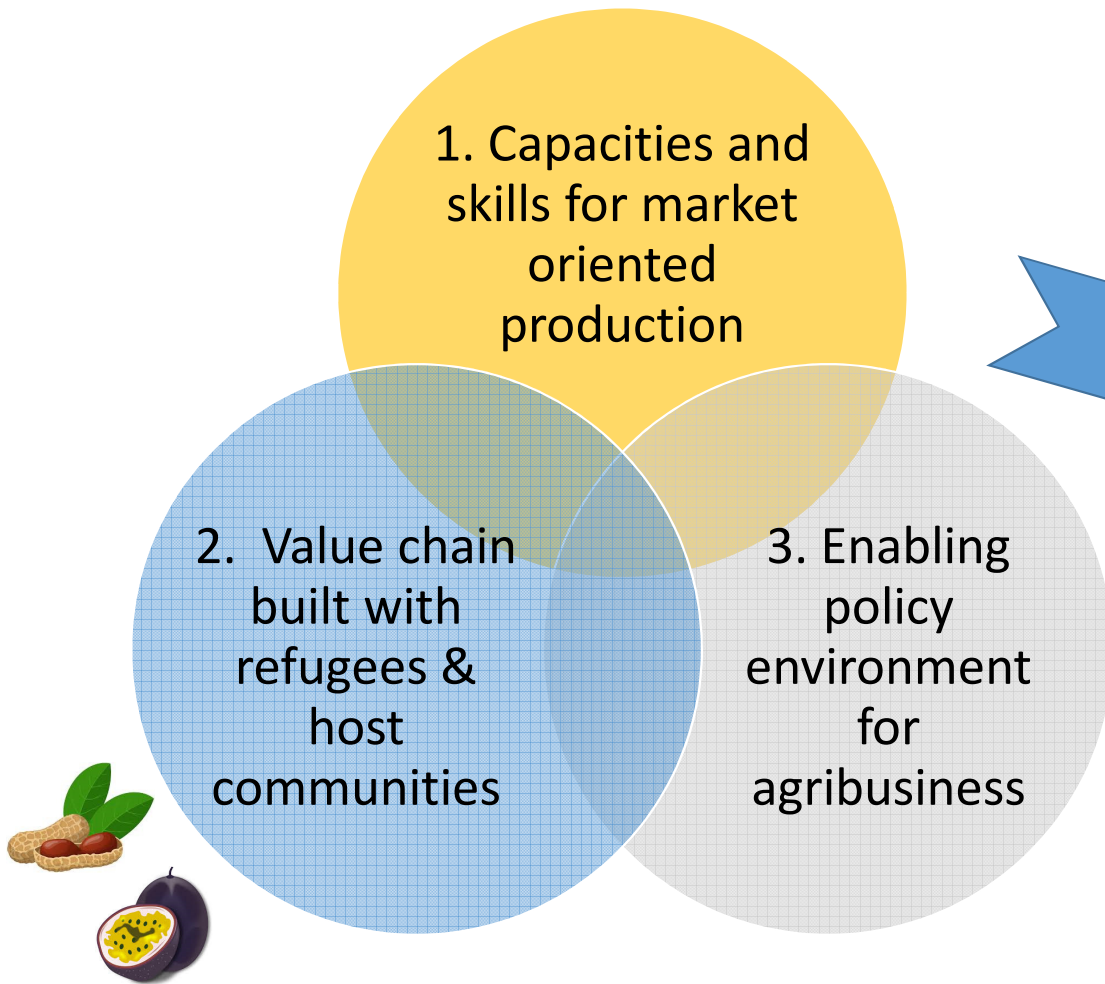
- Limited capacity in improved production practices & technologies & business approaches
- Capacity gaps of extension agents
- Poor market awareness (all actors)
- Poor capacity on food standards (producers)
- Poor knowledge of production volume & local producers (buyers)
- Limited knowledge on refugee rights (local authorities and private sector)

### Resources

- Public extension services have funding and staffing gaps
- Poor access to quality agriculture inputs
- Limited access to infrastructure & mechanised agricultural tools/equipment
- Lack of market analysis & broader information on market opportunities (all)



## *Intervention Theory of Change: The Aim*



**Self-reliance of refugees  
and host communities  
through economic  
integration in agricultural  
value chains**

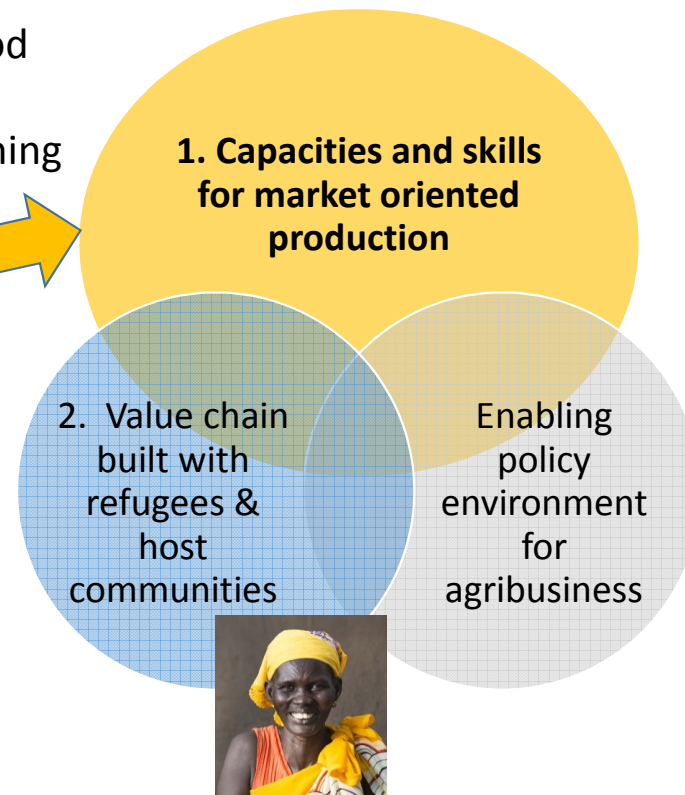
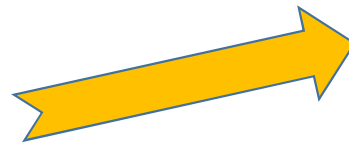
## ***Intervention Theory of Change: The Solutions - 1***

### **Farming skills**

- Training of Facilitators and lead farmers on Good Agric. Practices etc.
- FFS groups establishment and season long training
- Training on cross cutting issues
- Facilitate land access

### **Farmer Organization**

- Farmer Business Schools, marketing skills
- Formation & registration of groups
- Association
- Village savings & Credit
- Linkages with Financial Institutions



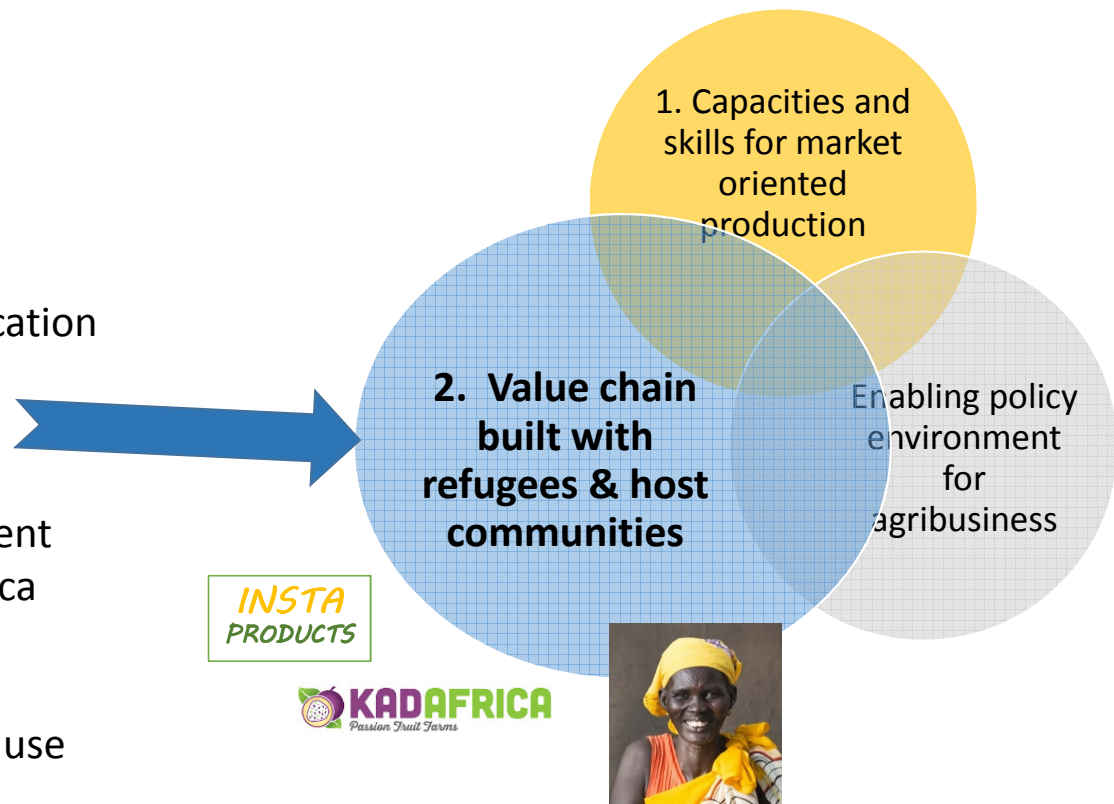
## *Intervention Theory of Change: The Solutions - 2*

### **Infrastructure**

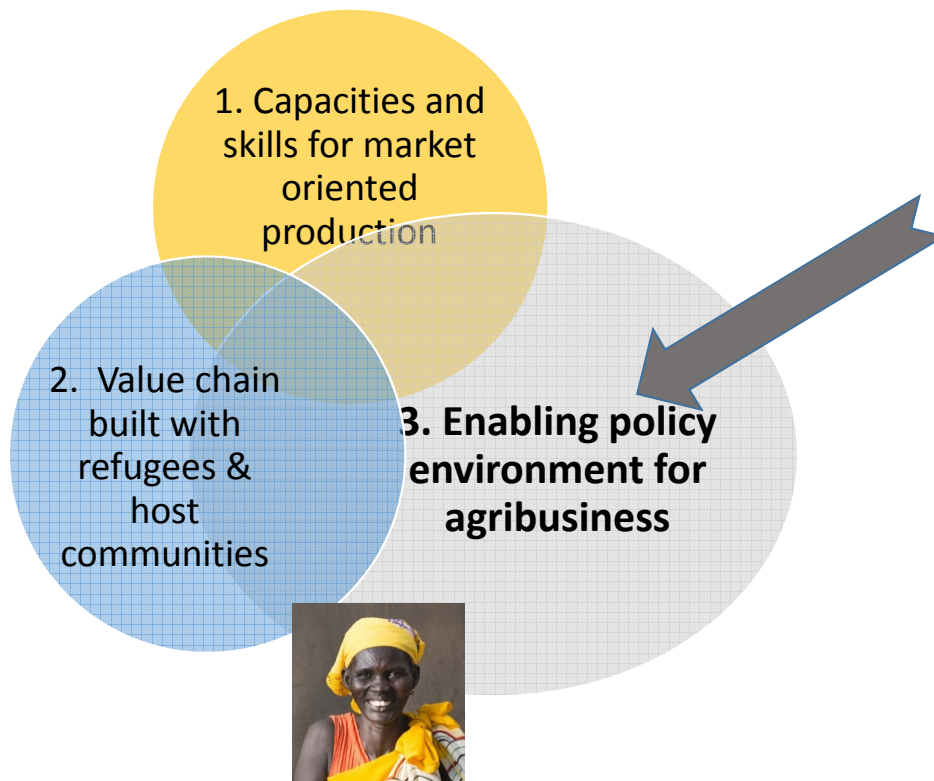
- Inputs: seed, fertilizer etc.
- Water for production /irrigation
- Learning demonstrations
- Community Seed/seedlings multiplication
- Quality assurance (Aflatoxin testing)

### **Strengthened Value chains**

- Value chain analysis/mapping
- Stakeholder & community engagement
- Contract farming w. INSTA & KadAfrica
- Train on post harvest handling
- Post harvest equipment
- Market linkages: by-products/waste use



## *Intervention Theory of Change: The Solutions - 3*



### **Evidence and guidance for private/public investments**

- Impact documentation (survey/RIMA)
- Document case studies
- Develop policy briefs
- Spread lessons learned

### **Political Buy-in**

- Share lessons in livelihood/refugee platforms
- Value chain platforms
- Advocacy campaigns
- Engage in dialogue events



## *“Safe-bet” private sector partners and a “graduation” approach*



### WHAT WE DO

INSTA was acquired by the Chandaria family in 2012. Since then, it has grown to become the largest producer of Ready-to-use therapeutic food (RUTF) in East Africa. We provide a local solution for critical food aid relief.



## Project development – milestones



**Dec 2018** joint field visit to Kakuma camp  
FAO, UNHCR, IFC, INSTA

**July 2019** joint FAO, UNHCR, INSTA & IFC visit to Soroti  
Uganda, NARO

**18 October 2019** FAO project submission  
**20 Nov 2019** Project Approval by IKEA-F

**Nov 2019-Feb 2020,**  
G-nut trials in Turkana

**Project signature**  
**26 May 2020**

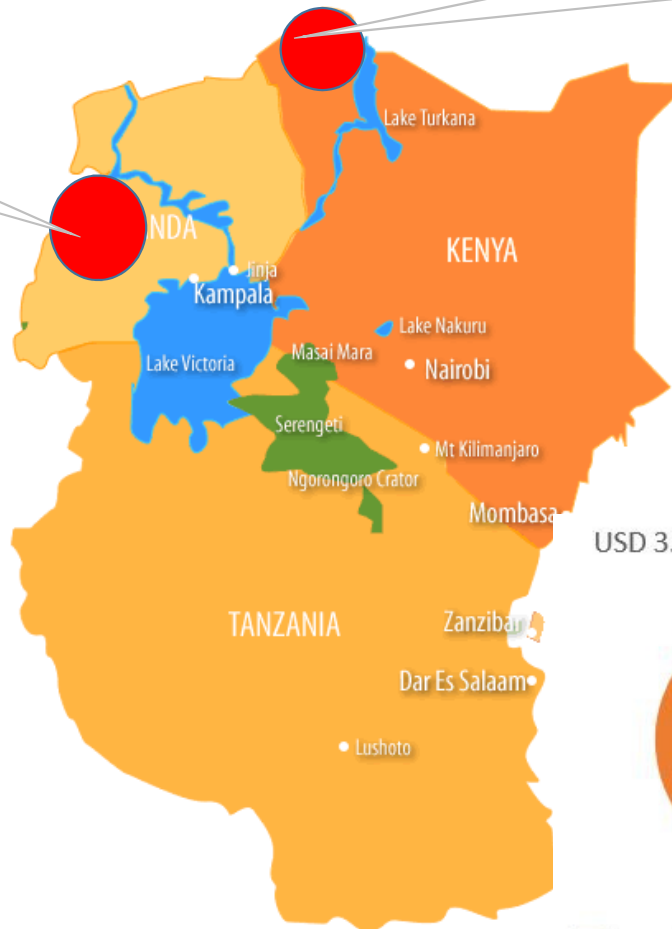
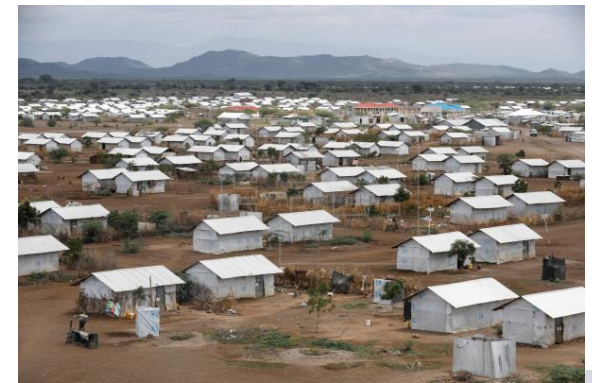




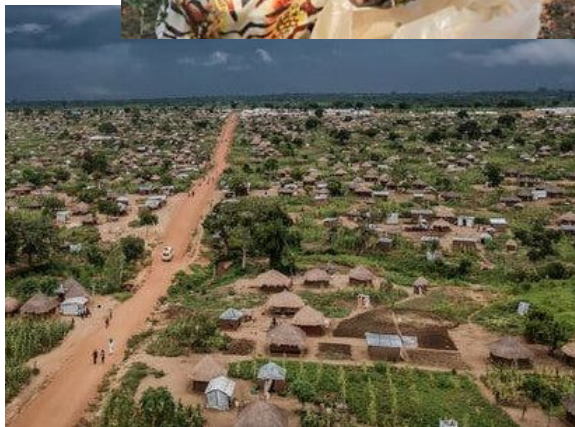
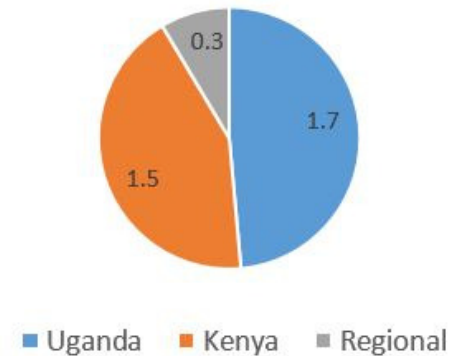
# Geographical scope

TBD– **UGANDA**  
Refugee & Host communities

**TURKANA, KENYA**  
Refugee & Host communities



USD 3.5M total project budget



# The PARTNERSHIP!

## Community mobilization and capacity building farm to market

Agronomy, links with  
research and MOA,  
management at field  
level



## Boost Private sector

Private sector  
investments, Irrigation,  
farm mechanization  
etc.



## Secure Market Outlets

Contract Farming, input  
credit, advisory,  
infrastructure  
investments



**Private  
Sector**

**INSTA  
PRODUCTS**



## Access & support in refugee contexts

Negotiation of land  
refugee-host alliance  
Beneficiary selection,  
Youth employment,  
coordination, monitoring

Input supply

Production

Aggregation

Processing

Market