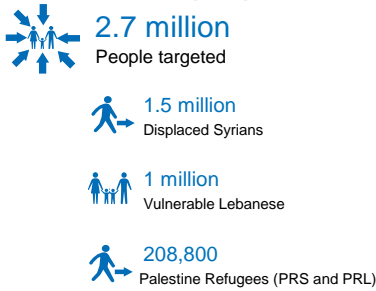


2019 January Statistical Dashboard

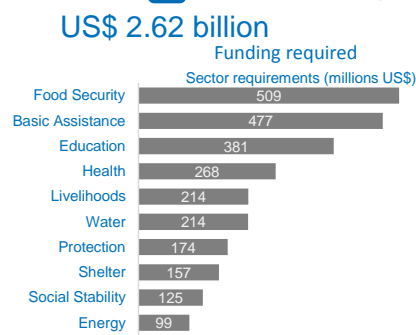


The monthly dashboard summarizes the progress made by partners involved in the Lebanon Crisis Response Plan (LCRP) and highlights trends affecting people in need. Partners in Lebanon are working to: 1) ensure protection of vulnerable populations; 2) provide immediate assistance to vulnerable populations; 3) support service provision through national systems; and 4) reinforce Lebanon's economic, social, institutional and environmental stability. Reported progress towards targets is cumulative since January 2019, unless otherwise specified.

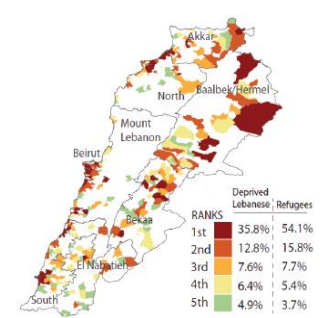
2019 Planning Figures



2019 Funding



251 Most Vulnerable Cadastres



Basic Assistance	This month:	Partners Reporting	16
		Population reached	415,034
# of households receiving multi-sector/ purpose cash transfers (monthly target)*		64,849 /	187,269
Total USD amount distributed as regular multi-sector/purpose cash (Leb, Syr & Pal)		\$10.7m /	\$283.9m
# of households receiving seasonal cash grants or vouchers		8,856 /	237,399
Total amount of seasonal cash distributed in USD (Leb, Syr & Pal)		\$3,321,000 /	\$152.2m
Total USD amount injected into economy in forms of cash assistance (seasonal + regular)		\$14.0m /	\$436.1m

* Vulnerable Lebanese, Syrian refugees and Palestine refugees. Population reached includes families targeted by UNICEF.

Syrian refugees < MEB (\$114/person/month) ¹⁹	68%
Syrian refugees < SMEB (\$87/person/month) ¹⁹	51%
Lebanese families receiving \$175 MPC grants	58
Palestinian families receiving \$100 MPC grants	8,608
Syrian families receiving \$175 MPC grants	56,855

MPC: multi-purpose cash

Education	This month:	Partners Reporting	17
		Population reached	445,728
# of children and youth whose registration fees for public formal education are partially or fully subsidised		434,916 /	497,171
# of children and youth whose registration fees for regulated NFE programmes are partially or fully subsidised		5,763 /	78,000
# of children and youth benefitting from remedial or homework support programs		5,049 /	70,000

% of school-aged refugees out of formal education in 2017 ³	59%
Non-Lebanese students in basic education enrolled in the first shift in 2017 ³	1 in 3
% of non-Lebanese among all students enrolled in first shift basic education in 2017 ³	32%
% of non-Lebanese among all students enrolled in public schools in basic education in 2017 ³	50%

Water	This month:	Partners Reporting	12
		Population reached	180,324
# of affected people assisted with improved access to adequate quantity of safe water for drinking and for domestic use [e.g. public water supply system improvements]*		2,475 /	1,146,900
# of affected people assisted with improved access to safely managed wastewater services [e.g. public wastewater network augmentations]*		0 /	797,500
# of affected people assisted with temporary access to adequate quantity of safe water for drinking and water for domestic use [monthly target; e.g. water trucking, on-site water treatment]		177,849 /	241,550
# of affected people with access to improved safe sanitation in temporary locations [monthly target; e.g. installation of latrines, septic systems, desludging]		160,056 /	262,150
# individuals who have experienced a WASH behaviour change session/activity		29,619 /	275,800

*Activities may focus on one or several aspects of a system (e.g. improving the efficiency of the water supply through a network repair programme), but households may still not have safe water when needed.

% population in Lebanon without access to safely managed drinking water ¹⁸	64%
% of all Lebanon's sewage not receiving secondary (biological) treatment ⁹	97%
% Syrian refugee families with no access to improved drinking water sources ¹⁸	22%
% Syrian refugee families with no access to improved sanitation facilities ¹⁸	14%
% Syrian refugee families without access to private sanitation facilities ¹⁸	39%
% Syrian refugee families with no access to personal hygiene items ¹⁸	13%

Food Security	This month:	Partners Reporting	32
		Population reached	822,941
# of vulnerable people reached with food assistance through various modalities (monthly target)		817,003 /	913,406
Total USD transferred as cash for food		\$19.0m /	\$274.2m
# of farmers with enhanced farming practices and production		0 /	21,678
# of youth supported with employability skills training in agriculture fields/ enrolled in basic literacy and numeracy		30 /	2,000
# of individuals supported for seasonal agricultural labor/casual labor		2,637 /	7,500
# of individuals trained on good nutritional practices/benefitting from microgardens		3,271 /	10,000

% Syrian refugee families with some level of food insecurity ¹⁹	90%
% Syrian refugee families are moderately to severely food insecure ¹⁹	34%
% Syrian refugee families depending on food voucher/e-card for income source ²	40%
% Lebanese families vulnerable to food insecurity ⁴	10%
% Lebanese farmers in need of agriculture support ⁴	73%
% PRS population who is food insecure ⁵	95%

Energy	This month:	Partners Reporting	1
		Population reached	75
# households benefitting from renewable energy equipment (solar water heaters, pico solar system, etc.)		0 /	196,575
# municipalities or informal settlements provided with off-grid lighting		0 /	38
# Renewable Energy power generation systems installed for communities and/or institutions		0 /	25
# individuals reached through installation of necessary equipment to reinforce the distribution network		75 /	277,140

Power generation required to cater for the daily electricity needs of displaced Syrians ¹⁵	486 MW
Power added to the grid since 2010 by MoEW	715 MW
Percentage of energy supplied to displaced Syrians out of total energy supplied in Lebanon ¹⁵	33%

Category	This month:	Partners Reporting	Population reached	Key Statistics
Health # of subsidized primary health care consultations provided # of persons assisted with their hospital bills # of primary health care staff receiving salary support at central, peripheral and PHC level		19	64,250	% Syrian refugees not able to access needed primary healthcare in past 6 months ¹⁹ 13% % Syrian refugees unable to access needed secondary healthcare in past 6 months ¹⁹ 23% Syrian refugee families' monthly health-related expenditure ² \$52 Syrian refugee families' monthly health-related expenditure share ² 13%
		115,042 /	2,150,000	
		6,729 /	119,009	
		49 /	250	
Livelihoods # of MSMEs & cooperatives supported through financial/non-financial services or technology transfer # of targeted vulnerable people working on public infrastructure/ environmental assets upgrading # of people provided with market based skills training		8	565	% of Lebanese families registered with NPTP with access to full-time employment ⁶ 13% % of Syrian refugee families living below the poverty line ¹⁹ 68% % of Syrian children at work ⁷ 17.5% % of Lebanese children at work ⁷ 5%
		202 /	3,670	
		165 /	7,530	
		68 /	10,000	
Protection # of individuals who benefitted from legal counseling, assistance and representation regarding legal stay # of individuals who benefitted from counseling, legal assistance and legal representation regarding civil registration including birth registration, marriage # of individuals benefitting from community-based interventions # of Individuals trained, supported, and monitored to engage in community-based mechanisms # of individuals with specific needs receiving specific support (non-cash) # of women, girls, men and boys at risk and survivors accessing SGBV prevention and response services in safe spaces # of women, girls, men and boys sensitized on SGBV # of boys and girls receiving case management services and assisted through Child Protection focused psychosocial support # of caregivers engaged in activities to promote wellbeing and protection of children # of boy and girls boys engaged in Community based Child Protection activities		44	88,767	Total registered Syrian refugees ¹ 947,063 % of households headed by females ¹⁹ 18.0% % of Syrian refugee families reporting that all members have legal residency permits ¹⁹ 18% % of families reported having at least one member with specific needs ¹⁹ 64% % of birth registered with the Foreigners Registry ¹⁹ 21%
		2,148 /	40,000	
		5,448 /	100,000	
		0 /	67,640	
		450 /	5,201	
		555 /	14,658	
		5,028 /	140,000	
		15,053 /	286,750	
		2,075 /	24,000	
		2,234 /	29,262	
		2,238 /	91,445	
Shelter # of people benefitted from weatherproofing and/or maintenance of makeshift shelters within informal settlements, residential and non-residential buildings # of people benefitting from Rehabilitation /Upgrade/Repair of substandard buildings into adequate shelters # of people benefitting from upgrade of common areas within substandard residential buildings # of individuals received fire fighting kits and awareness sessions in informal settlements and substandard buildings		8	16,197	% of Syrian refugee families living in substandard shelter conditions ¹⁹ 55% % of Syrian refugee families living in informal settlements ¹⁹ 19% in non-residential buildings (worksites, garages, etc.) ¹⁹ 15% Average cost for rent per household for Syrian refugees ¹⁹ \$182
		10,651 /	208,800	
		610 /	297,164	
		2,340 /	30,000	
Social Stability # of municipalities receiving Community Support or Basic Service Projects and Solid waste management # new dispute resolution and conflict prevention mechanisms established # youth participating in social stability initiatives		3	-	% people who agree presence of Syrian refugees places too much strain on Lebanon's resources (e.g. water, electricity) ¹⁰ 90% # cadastres identified as most vulnerable ¹¹ 251 # of vulnerable cadastres where population has increased by 50% or more ¹¹ 114 % people who believe Lebanese people have been good hosts to refugees since 2011 ¹⁰ 91% ¹³ % people reporting 'no tensions' between Lebanese and Syrians in their area ¹⁰ 3% ¹⁴
		17 /	230	
		28 /	56	
		0 /	40,000	

1. UNHCR registration data as of 31 January 2019.
 2. 201' Vulnerability Assessment of Syrian Refugees in Lebanon (VASyR).
 3. MEHE - 2017.
 4. Food Security and Livelihoods Assessment of Lebanese Host Communities FSLA 2015.
 5. AUB UNRWA 2015.
 6. MoSA NPTP Database.
 7. ARK Survey (Wave 1, 2&3)
 8. UNICEF (2016), Rapid Assessment for Large & Medium Scale Waste Water Treatment Plants across the Lebanese Territory.
 9. Activity Info Partner Reports - 2018.
 10. UNDP - ARK Narrative Report - Regular Perception Surveys on Social Tensions throughout Lebanon.
 11. Inter-Agency 251 most vulnerable cadastrals, <http://data.unhcr.org/syrianrefugees/download.php?id=8698>
 12. 93% of Lebanese and 77% of Syrian respondents.
 13. 92% of Lebanese and 89% of Syrian respondents.
 14. 2% of Lebanese respondents and 11% of Syrian respondents.
 15. Lebanon, Ministry of Energy and Water and UNDP (2017), The Impact of the Syrian Crisis on the Lebanese Power Sector and Priority Recommendations.
 16. Lebanon, Ministry of Energy and Water (June 2010), Policy Paper for the Electricity Sector.
 17. UNDP (2017), 2016 Solar PV Status Report for Lebanon.
 18. WHO/UNICEF (2016), Joint Monitoring Program Lebanon water quality survey. Safely managed drinking water is 1) from an improved water source, 2) that is located on premises, 3) available when needed, and 4) free from faecal and priority chemical contamination.
 19. 2018 Vulnerability Assessment of Syrian Refugees in Lebanon (VASyR).