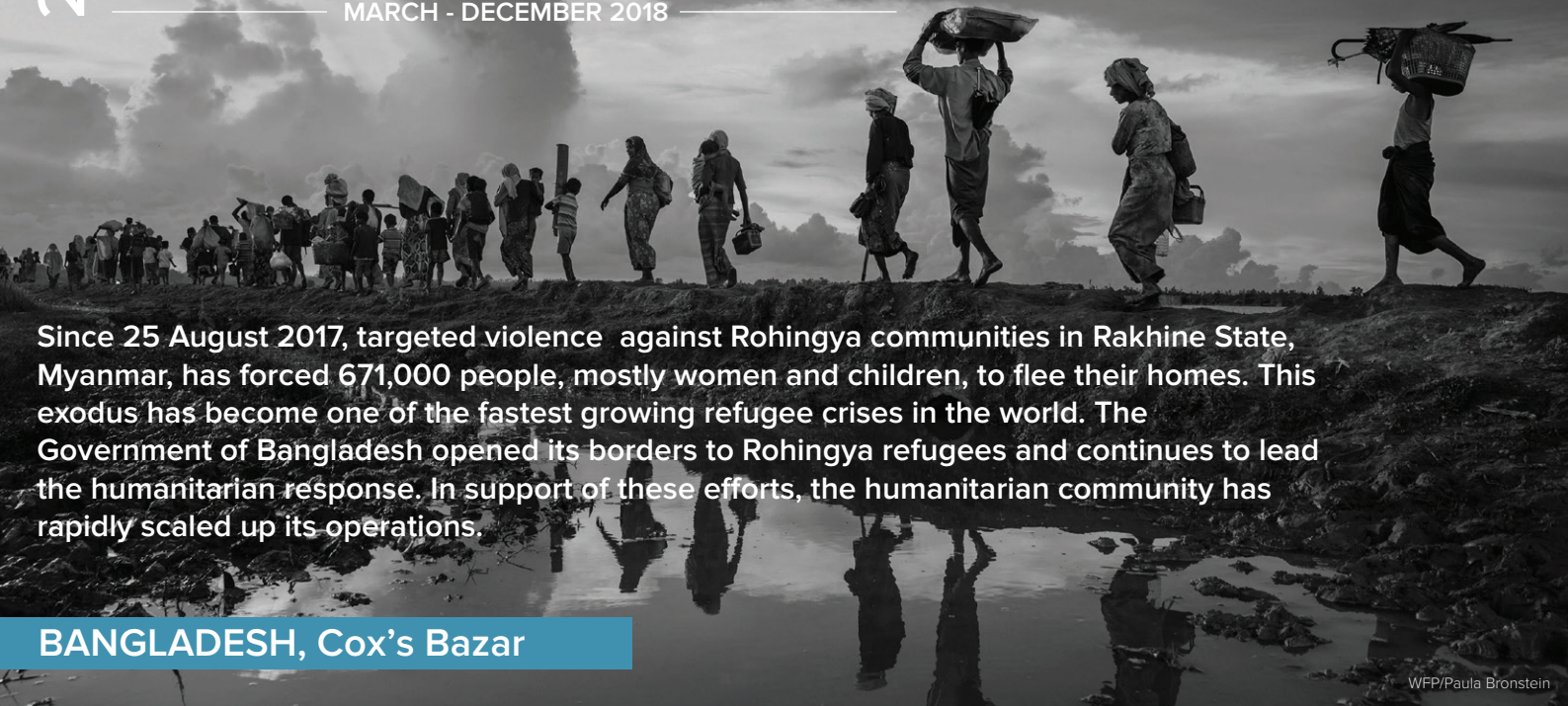


2018 JRP FOR ROHINGYA HUMANITARIAN CRISIS

MARCH - DECEMBER 2018

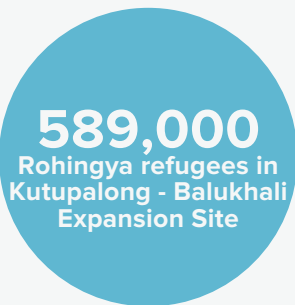


WFP/Paula Bronstein

Since 25 August 2017, targeted violence against Rohingya communities in Rakhine State, Myanmar, has forced 671,000 people, mostly women and children, to flee their homes. This exodus has become one of the fastest growing refugee crises in the world. The Government of Bangladesh opened its borders to Rohingya refugees and continues to lead the humanitarian response. In support of these efforts, the humanitarian community has rapidly scaled up its operations.

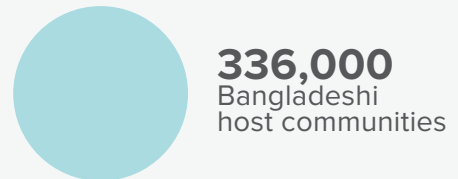
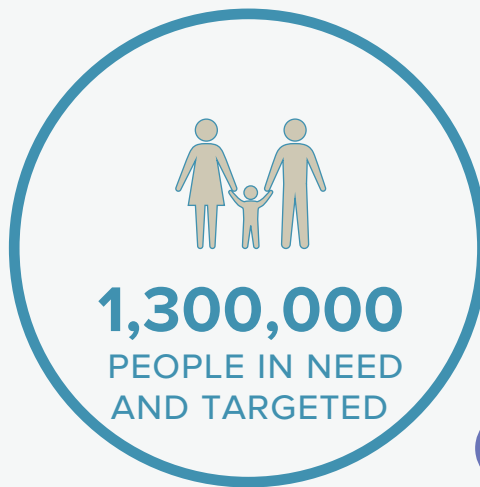
BANGLADESH, Cox's Bazar

TOTAL PEOPLE IN NEED



110,000
Rohingya refugees in
host communities

151,000
Rohingya refugees in
other settlements in
Teknaf and Ukha



34,000
Rohingya refugees
registered in the early 1990s

80,000
Contingency

2018 STRATEGIC OBJECTIVES



1. Provide timely lifesaving assistance and protection, as well as improve the living conditions of Rohingya refugees and affected host communities.



2. Ensure well-being and dignity of Rohingya refugees and affected host communities.



3. Support environmentally sustainable solutions.



4. Confidence-building and resilience of Rohingya refugees and affected host communities.

FUNDING REQUIREMENTS



USD **950.8** Million

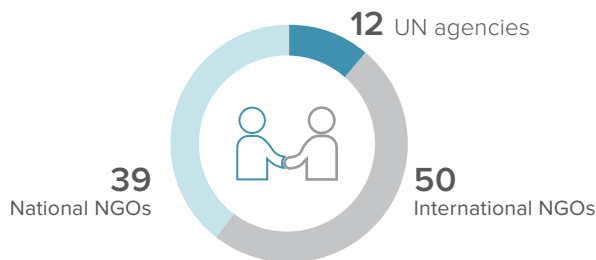
required in **2018** in order to maintain priority response efforts.

Number of Projects



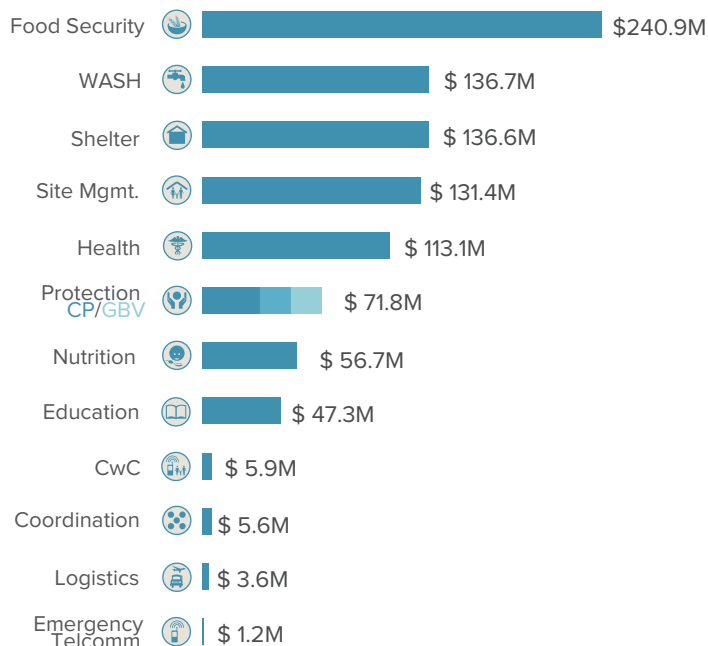
182

JRP partners breakdown

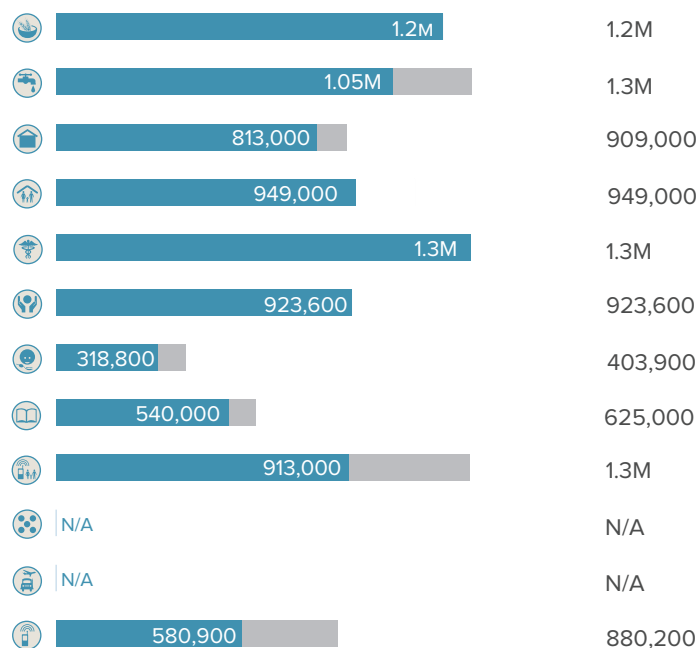


101 JRP Partners

FINANCIAL REQUIREMENT BY SECTOR



PEOPLE TARGETED VS IN NEED



NUMBER OF PARTNERS BY SECTOR

Number of partners	Coordination		Food Security			Logistics		Protection			GBV		Site Mgmt.		WASH
	ETC	Education	Health	Health	Nutrition	Child Protection	Child Protection	Child Protection	Shelter	Shelter	WASH				
1															
5															
10															
15															
20+															
Bangladeshi Host Communities	3	2	9	12	17	1	5	7	7	3	8	3	7		
Refugees in Camps & Settlements	4	2	10	15	25	1	9	8	9	7	23	6	10		
Refugees in Host Communities	2	2	4	6	11	1	1	5	6	5	7	5	7		
Not Specified	4	2	11	16	25	1	9	11	9	8	23	7	11		

PARTNERS ENGAGED WITH THE INTER SECTOR COORDINATION GROUP (ISCG)

AAR	BITA	CW	GK	IOM	NRC	RN	UNHabitat
ACF	BLAST	CZM	GUK	IPAS	OBAT	RTMI	UNHCR
ACLAB	BNM	DAM	GUSS	IRC	OHCHR	SAJIDA	UNICEF
ACTED	BNWLA	DCA	HAEAF	ISDE	Oxfam	SARPV	United Sikhs
ActionAid	BRAC	DCHT	HEAL	MdM	PA	SCI	UNRCO
ADRA	CA	DoPeace	HELP	Medair	PHALS	SHED	UNWOMEN
AFF	CARE	DRC	HelpAge	Medglobal/HF	PHD	Shushilan	VERC
Agrajatra	Caritas	DSK	HF	Mercy Malaysia	PKSF	SI	VSO
AMJ	CBM	FACT HEALTH	HI	MHI	Plan	SKUS	WaterAid
AMURT	CCDB	FAO	Hindu Family	MI	Protyashi	SP	WC
ANANDO	CCP	FCA	HSI	MOAS	PUI	TAI	WFP
ASEAB	CDD	FDSR	HTI	MSF	PULSE	TDF	WHH
AWO	CDP/CP	FH	Humanity	MTI	PWJ	TdH	WHO
Bastob	COAST	FHM	First	Mukti	REACH	TMI	WorldFish
BBC/MA	CODEC	FIVDB	HYSAWA	NCA	RI	TWB	WR
BDRC	CP	FKRF	icddr,b	NGOF	RIC	UNDP	WVI
BGS	CPI	Friendship	IHA	NONGOR	RISDA	UNFPA	YPSA
Internews	NVPF	Tearfund					