

# SYRIA REFUGEE RESPONSE

WASH Sector Working Group  
National WASH Partner Presence

January 2015

Akkar



WASH Sector Working Group  
GIS and Mapping by UNHCR and UNICEF  
For more information and updates contact  
William Lavell wlavell@unicef.org

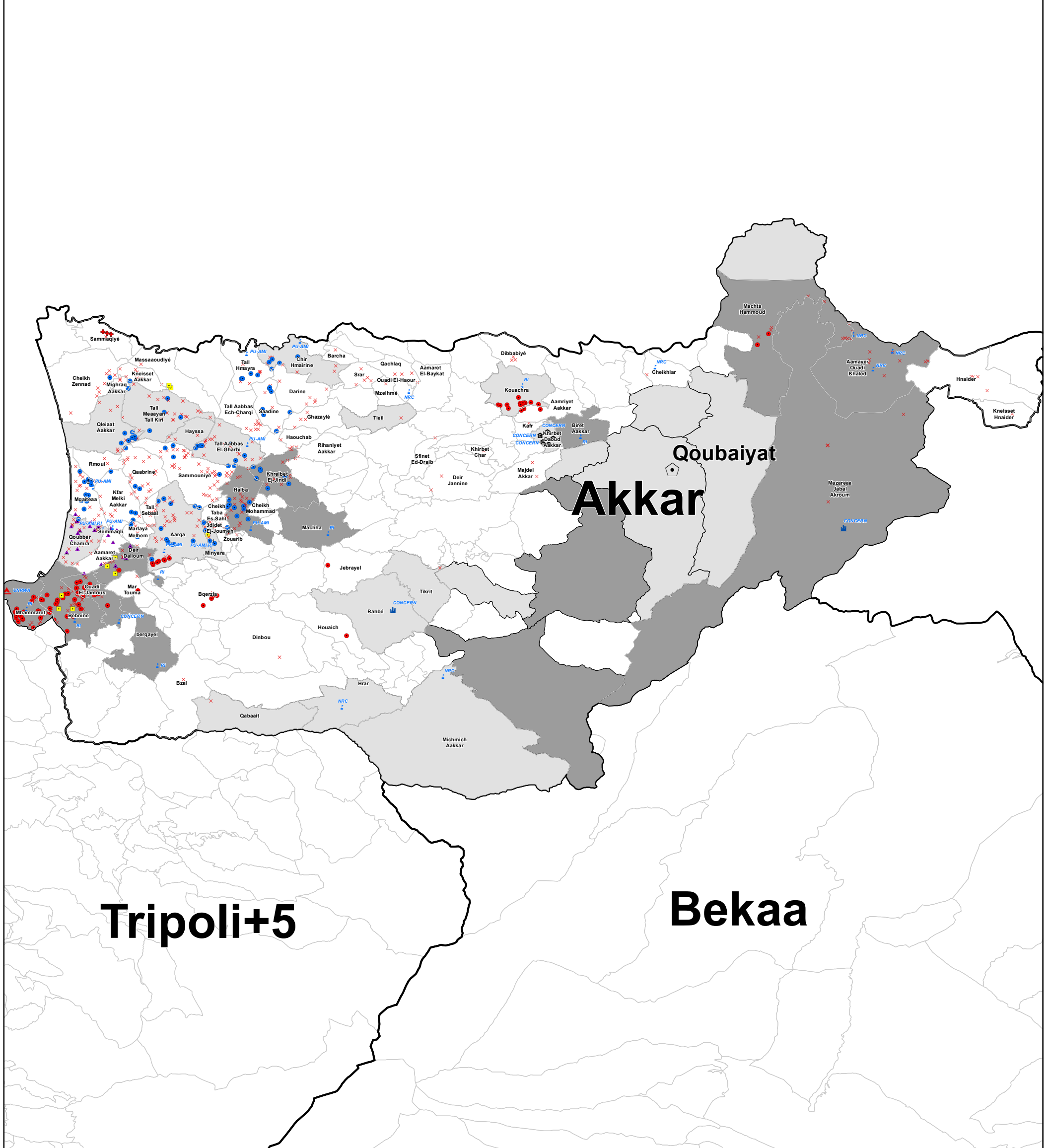
Date: 3/10/2015

**Overview:**

This map shows partner presence in Informal Settlements in Lebanon based upon reporting of any type of WASH activity in ActivityInfo for January 2015. Additional partner location information has been added from the IAMP coordination tools from the Bekaa region to add a more complete picture of the situation. For additional mapping products and information please see the UNHCR Informational portal.

<http://data.unhcr.org>

For more detailed partner information please use the WASH Sector CartoDB online map and or size A0 national map.



<b>Wash Partners in IS</b>				<b>SiteType</b>		<b>242 Most Vulnerable Cadastrals</b>		 N
<ul style="list-style-type: none"> <li>UNICEF</li> <li>No Coverage</li> <li>ACF</li> <li>AVSI,CISP</li> <li>CISP</li> </ul>	<ul style="list-style-type: none"> <li>CISP,PU-AMI</li> <li>CONCERN</li> <li>GVC</li> <li>INTERSOS</li> <li>LRC</li> </ul>	<ul style="list-style-type: none"> <li>Lebanese Red Cross</li> <li>MEDAIR</li> <li>Mercy Corps</li> <li>Mercy Corps / Oxfam</li> <li>Mercy Corps / WVI</li> </ul>	<ul style="list-style-type: none"> <li>NRC</li> <li>NRC / ACF</li> <li>OXFAM</li> <li>PU-AMI</li> <li>PU-AMI,RI</li> </ul>	<ul style="list-style-type: none"> <li>PU-AMI,Solidarity</li> <li>RI</li> <li>Solidarity</li> <li>WVI</li> <li>SCI</li> </ul>	<ul style="list-style-type: none"> <li>Collective Centre</li> <li>Locality</li> <li>Municipality</li> <li>Palestinian Camp</li> <li>School</li> </ul>	<ul style="list-style-type: none"> <li>1st and 2nd Most Vulnerable</li> <li>3rd,4th and 5th Most Vulnerable</li> <li>Main Cities</li> </ul>	<ul style="list-style-type: none"> <li>0</li> <li>5</li> <li>10</li> </ul>	