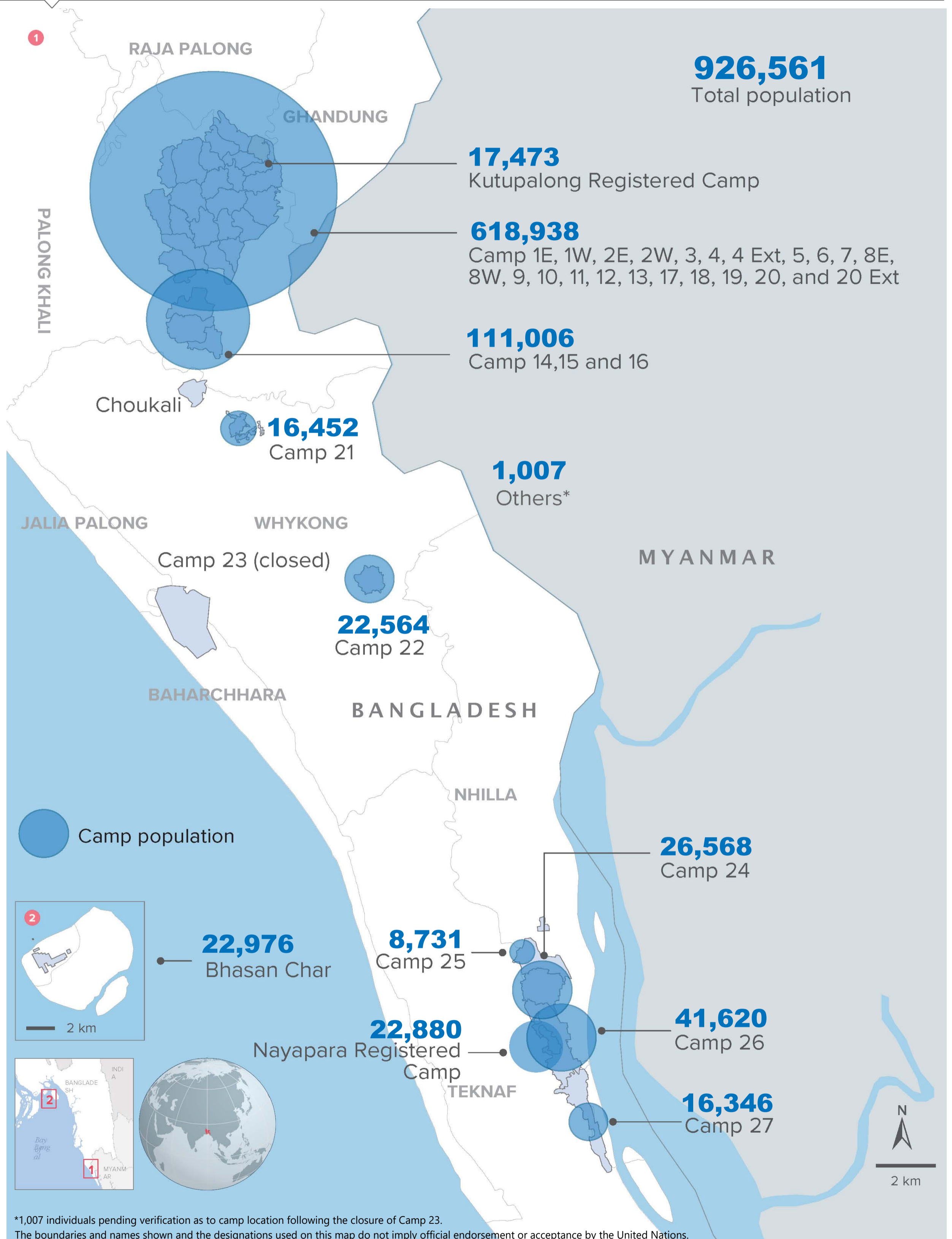


Rohingya Population by Location

(as of 31 Mar 2022)



*1,007 individuals pending verification as to camp location following the closure of Camp 23.

The boundaries and names shown and the designations used on this map do not imply official endorsement or acceptance by the United Nations.

Creation date: 31 Mar 2022

Source: GoB - UNHCR Joint Registration Exercise