



AMAL ALLIANCE  
EMPOWERING GLOBAL CITIZENS



Social Emotional Learning



Early Childhood Development



Psychosocial  
Support

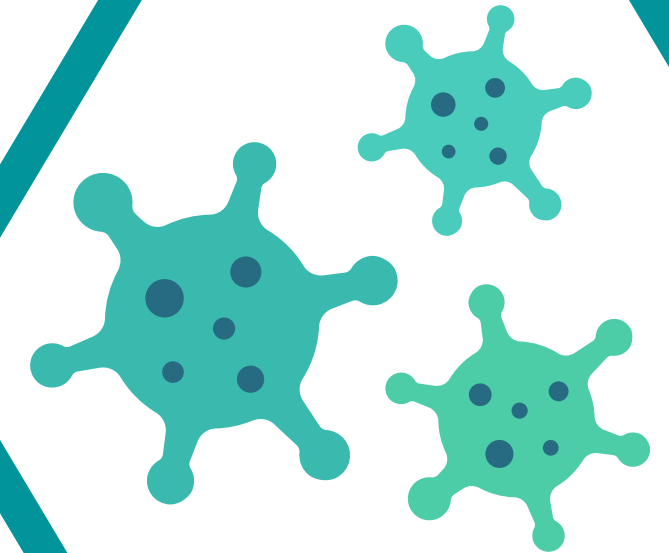


Peacebuilding



# History in Greece

2018



Launched our  
1st program in  
partnership  
with Elpida  
Home in  
Thessaloniki

Trained  
Participants from  
Refugee Trauma  
Initiative, Lifting  
Hands, ARSIS,  
IHA, We Are Here,  
Elpida, etc.

Places we have  
worked:  
Thessaloniki  
Serres  
Lagadikia  
Polykastro

# COLORS OF KINDNESS



**Humanitarian  
Education  
Accelerator**



# HOW IT WORKS



TRAIN



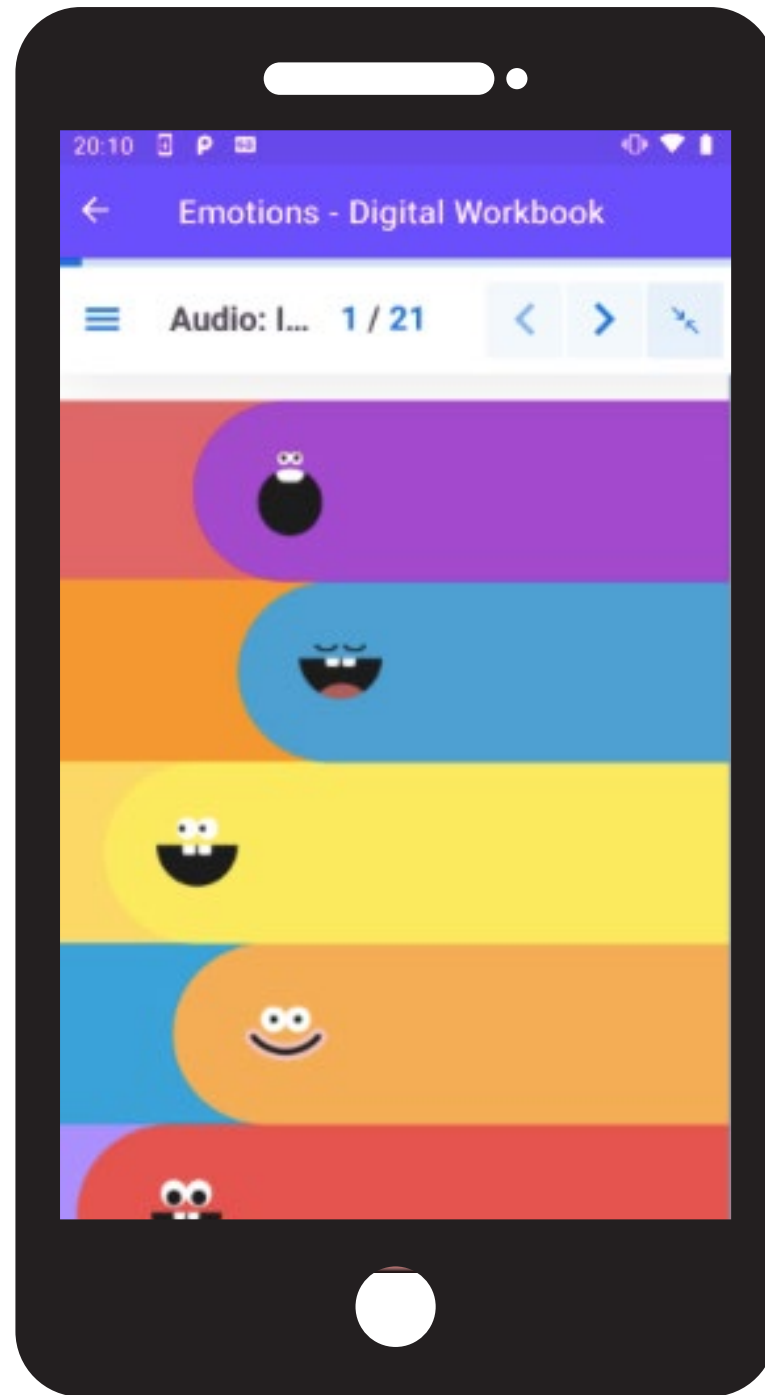
TEACH



TRANSFORM

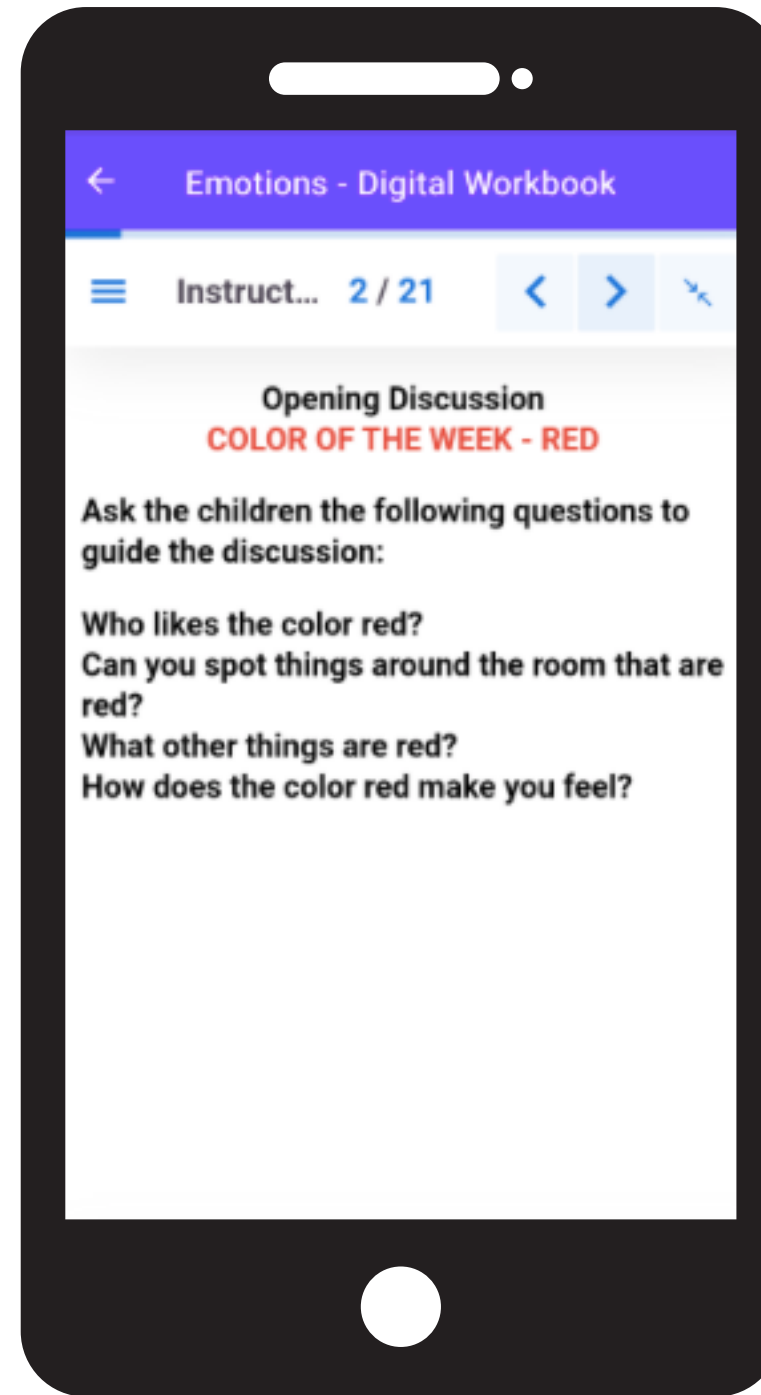


# LEVERAGING TECH



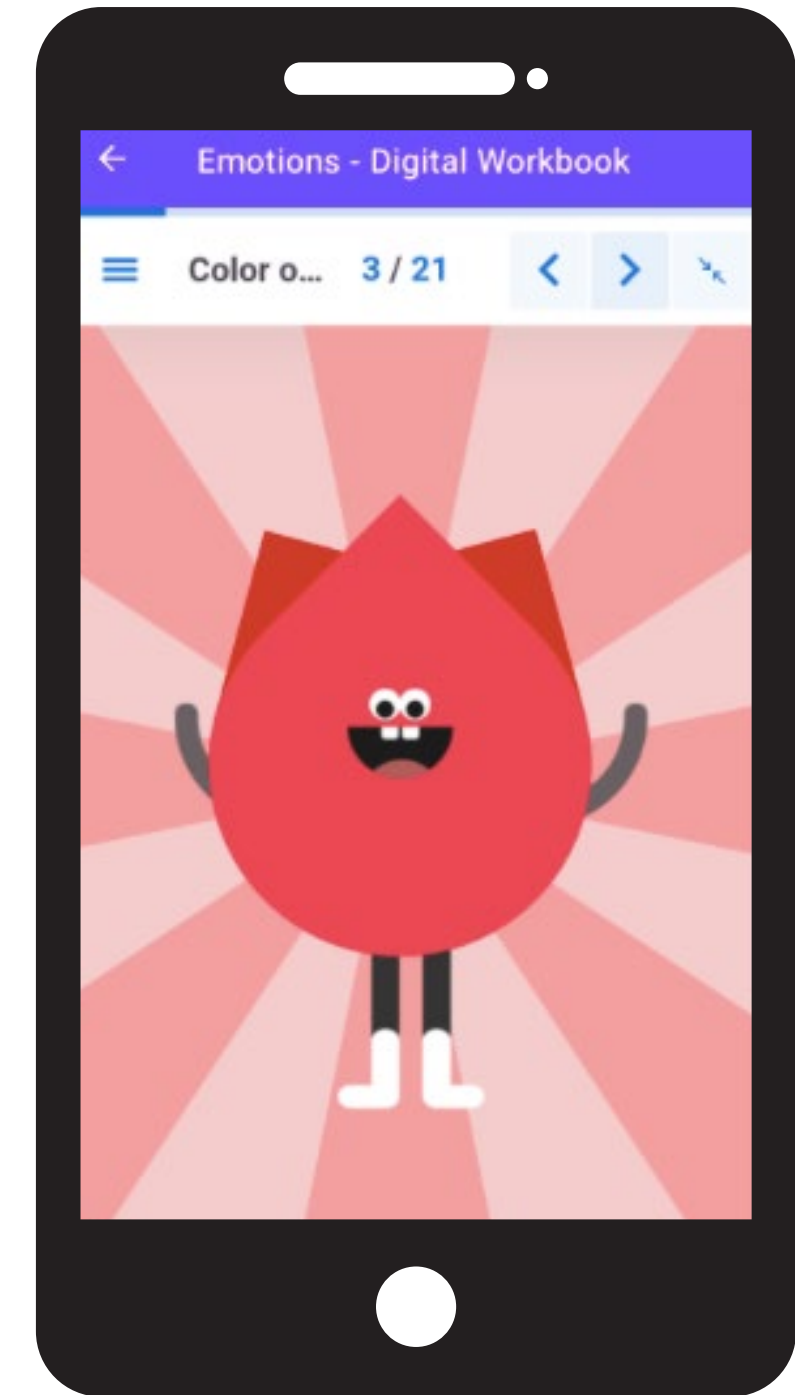
## AUDIO

Listen to the  
podcast!



## INSTRUCTIONS

Read the important  
tasks!



## VISUAL

Show the  
children!



# PROVEN IMPACT



16.5

% increase in SEL competencies

99

% of caregivers noted their children's behavior and mood improved

0

infections among those who participated in the program





# AWARD WINNING MODEL



**Crisis and Conflict Response  
Top 3 Nominee**



**hundrED**

THE ROYAL ACADEMY OF BHUTAN

# WHY IS SEL IMPORTANT?

Social and emotional learning (SEL) is the process by which children and adults come to understand and manage emotions, make responsible decisions, feel and show empathy for others, and establish and maintain healthy relationships.

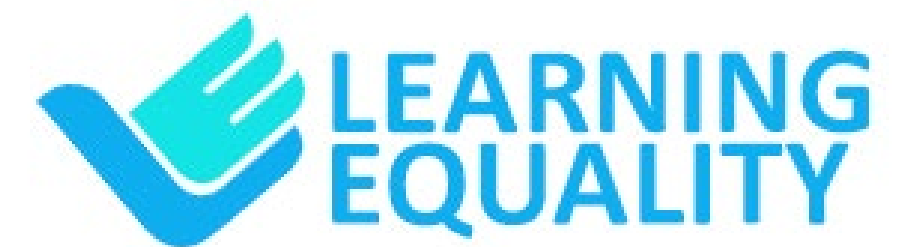




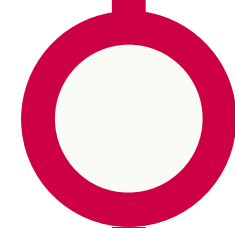
# GREECE LEADING GLOBAL STANDARDS



- As of Sept 2021, UNHCR reported that Greece has received 168,714+ refugees & asylum seekers
- No SEL programming is being conducted at scale currently in Greece.
- There is limited evidence base findings for SEL in Education in Emergencies or Crisis.
- This case study will be pioneering the way!

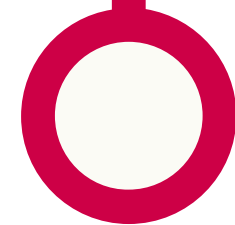


# A SCALE READY SOLUTION



## Instruction

1 hour a week of  
class for 16 weeks



## Feedback

Completed  
teacher/facilitated surveys

# BENEFITS & GROWTH



## ACADEMIC PERFORMANCE

Increase academic performance by preparing children to be ready to learn.



## PROTECTION & WELLBEING

Providing trauma informed educational opportunities for girls



## INCLUSIVE EDUCATION

Thoughtful content to address learning barriers such as anxiety and depression



## SUSTAINABLE IMPACT

Forge strategic partnerships for future funding opportunities



## EVIDENCE BASED SEL IN EIE

Implement evidence based SEL practices at scale.



# THANK YOU!

We look forward to working together to empower children around the globe.

Contact us @ [info@amalalliance.org](mailto:info@amalalliance.org)

Follow us @amalalliance

