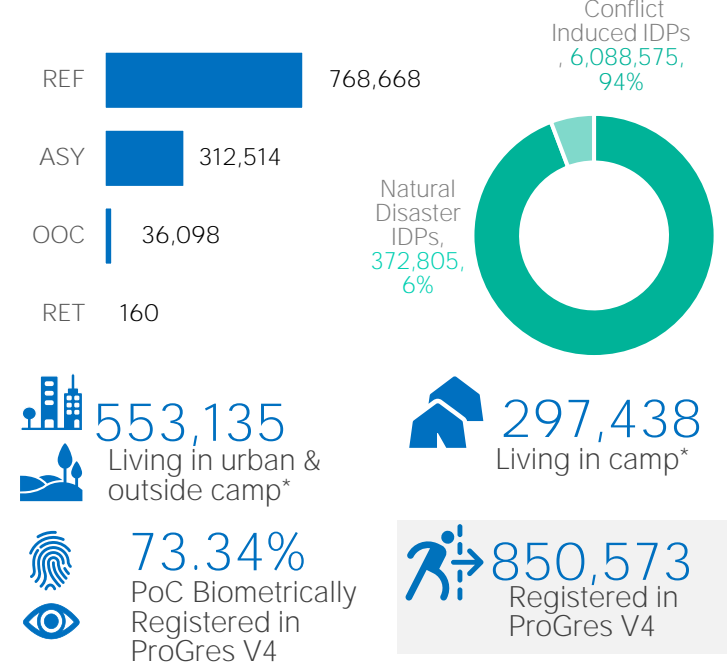
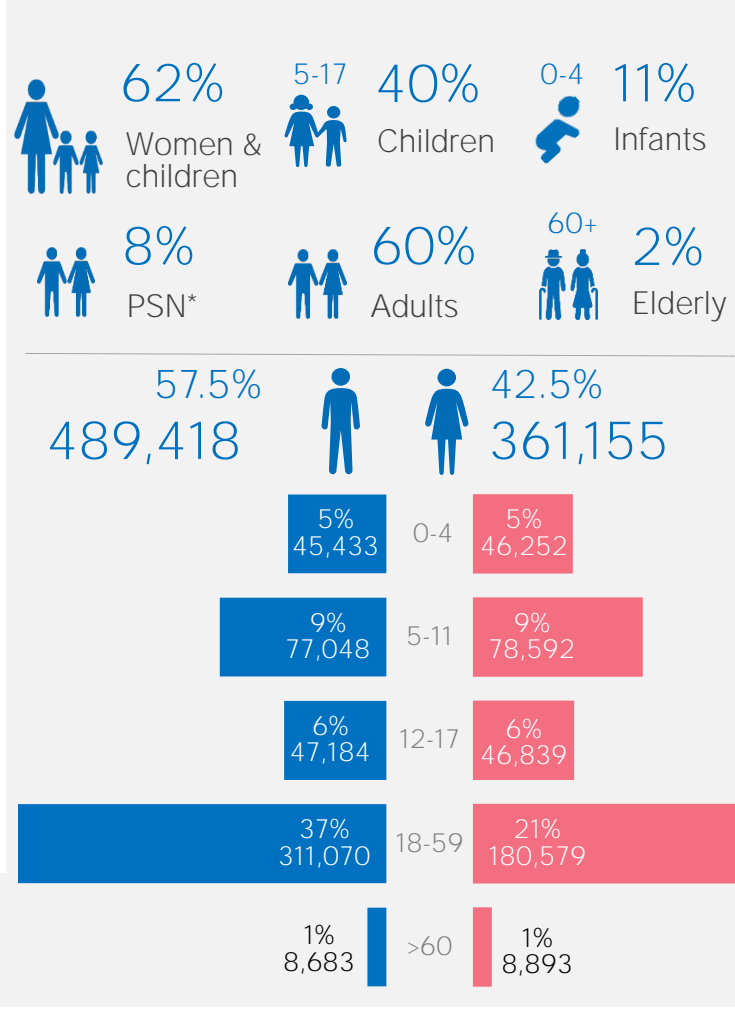


KEY FIGURES



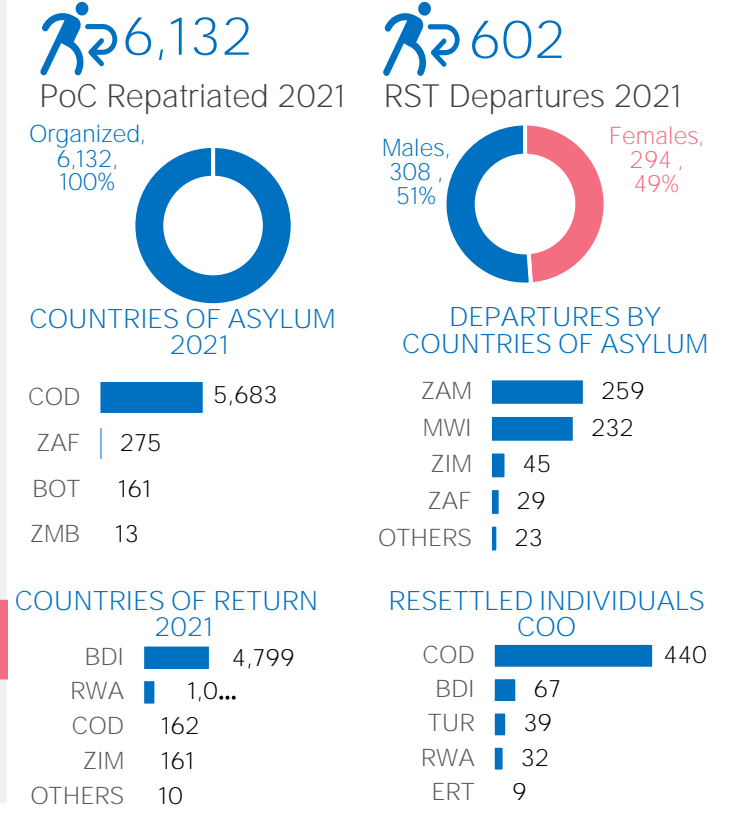
AGE & GENDER (PoC registered in ProGRES V4)



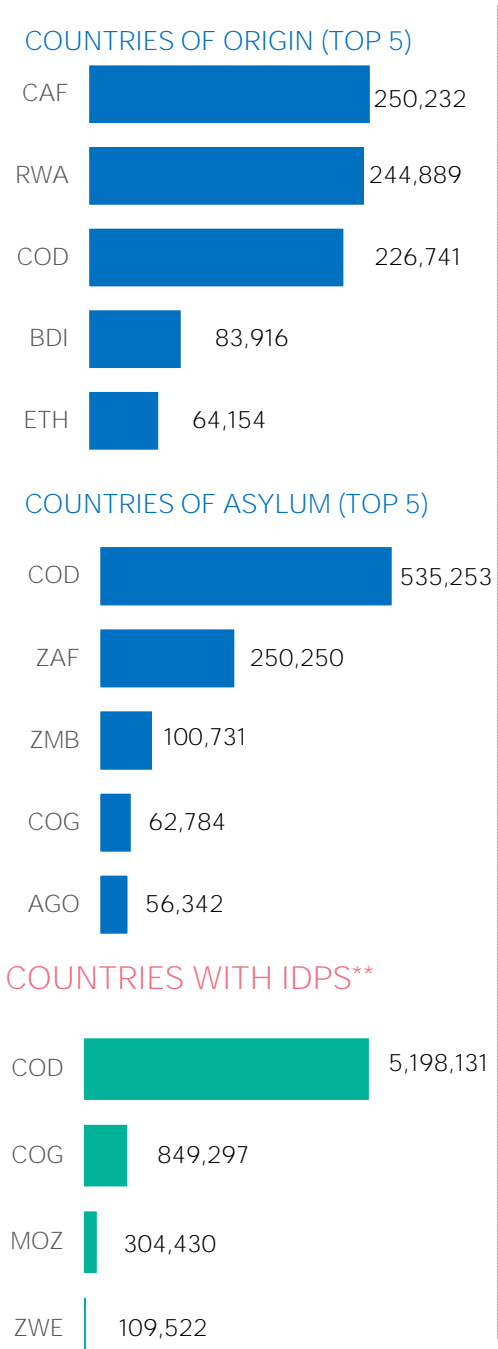
CONTEXT

RBSA Population Statistics are compiled monthly using data from ProgresV3/V4 and external government datasets. External data are statistics as of 31 July 2021 for IDP, IDP Returnees, Repatriation, Returnees, NIS data from South Africa and Self Settled from Angola, Zambia, DRC and Zimbabwe which is using Progres V3 data.

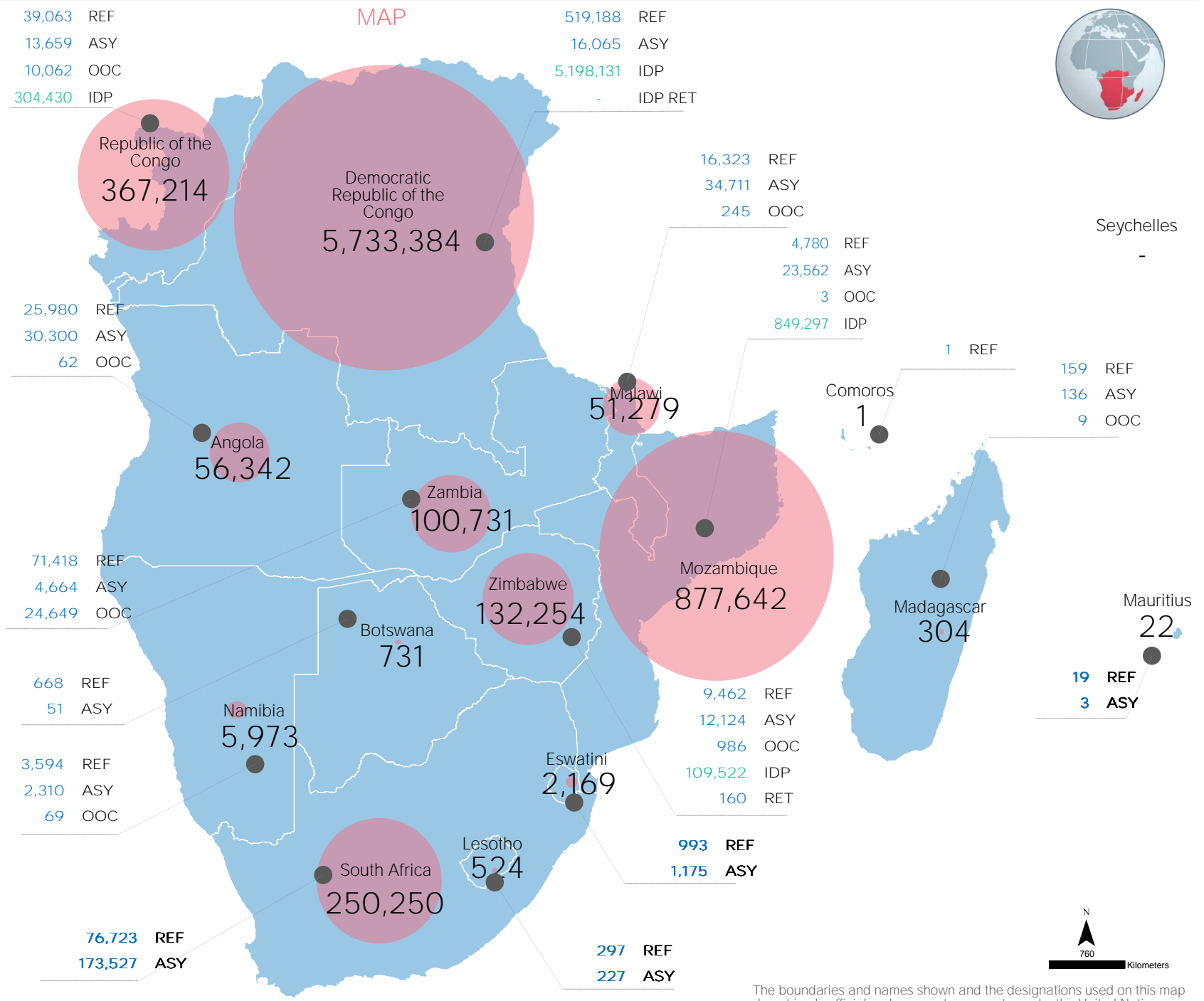
DURABLE SOLUTIONS



REF, ASY, OOC*



MAP



TRENDS



* Includes dis-aggregation for South Africa with 63% males aged 18 - 59 which changes previous
Data sources: Government, IOM, UNHCR *Refugees, Asylum-seekers, Others of concern
IOM/DTM R12 as of 12 April *Figure without returnees
For more information or to contribute, UNHCR RBSA DIMA (rsarbdim@unhcr.org)