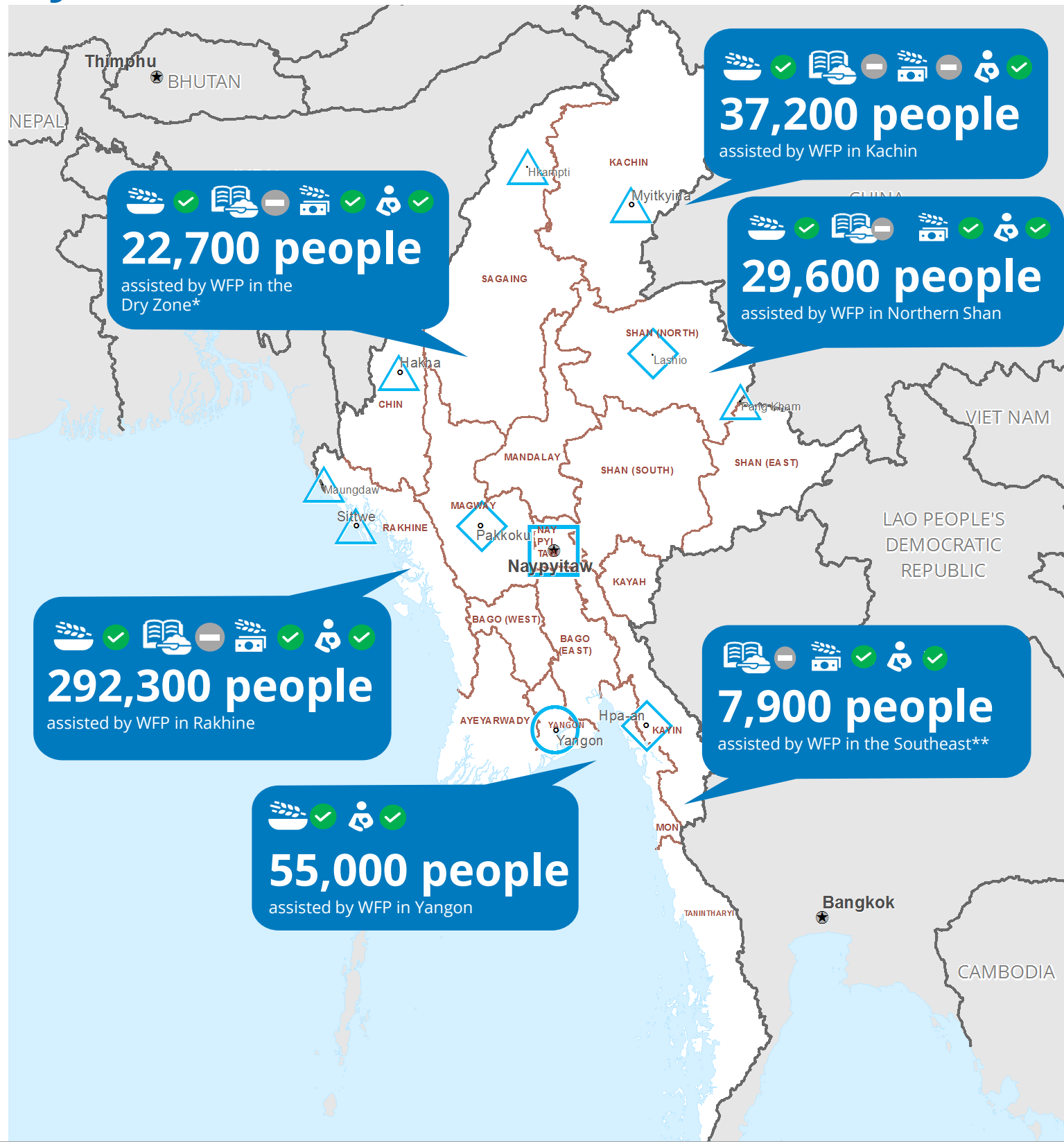




World Food Programme

Emergency Dashboard | May 2021

Myanmar



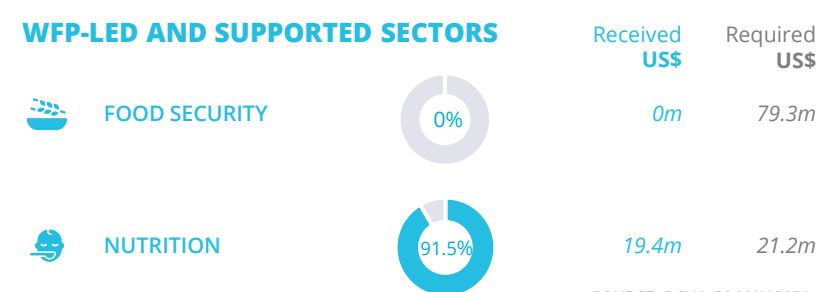
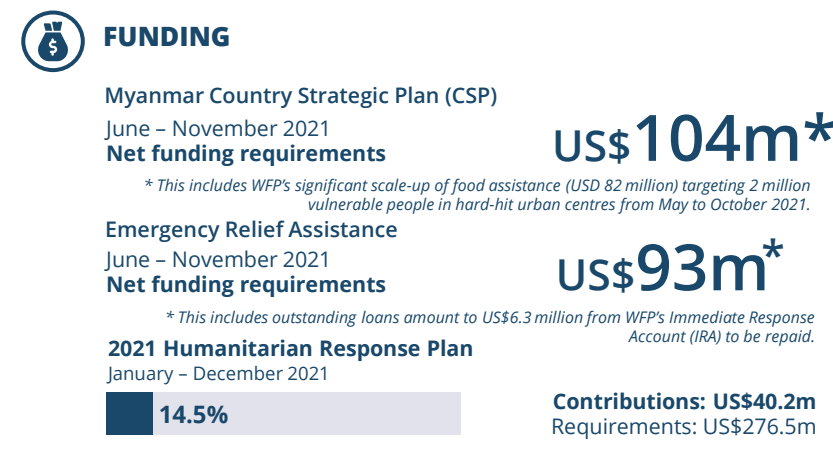
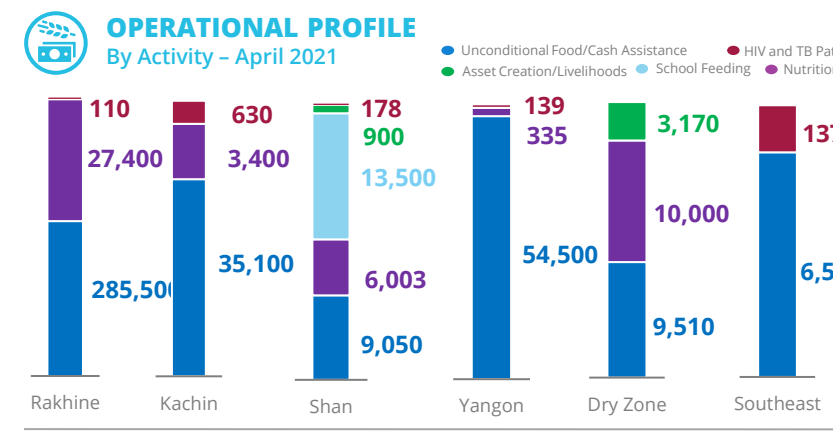
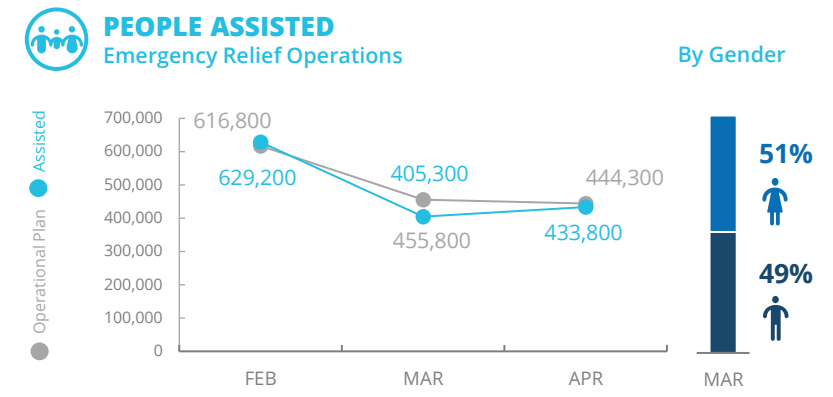
- Country Office
- Area Office
- Sub Country Office
- Field Office
- National Capital
- Major Town
- Intermediate Town
- Small Town
- International Boundary
- Provincial Boundary
- River
- Surface Waterbody
- General Food Distribution
- School Feeding
- Livelihoods
- Nutrition
- WFP Humanitarian Flight Services
- Ongoing
- Partially Suspended
- Suspended
- Not Active

*including Magway, Sagaing and Chin
 **including Mon, Kayin, Kayah, and Tanintharyi

Data sources: WFP, UNGIWG, GAUL, OCHA.

The designations employed and the presentation of material in the map do not imply the expression of any opinion on the part of WFP concerning the legal or constitutional status of any country, territory, city or sea, or concerning the delimitation of its frontiers.

© World Food Programme 2021



WFP LEVEL 2 EMERGENCY SINCE 10 MAY 2018

For more information, see the **COUNTRY BRIEF**

Myanmar Country Strategic Plan (2018-2022)

Gender and Age Marker

SAVING LIVES
 CHANGING LIVES

Produced by the WFP Operations Centre (OPSCEN) jointly with Country Office and Regional Bureau Bangkok. This dashboard is based on best available information at the time of production. Future updates may vary as new information becomes available.