



# Performance Snapshot

Quarter 4

Uganda Refugee Response Plan (RRP) 2020-2021

January - December 2020



**232,697**  
Refugees & Asylum Seekers  
**42,739 HHs**

**Bidibidi Refugee Settlement**  
**Yumbe Sub-Office**



**43**  
Partners

| Sector                      | Actual status per key indicator   | Target/Standard (2020 revised)                              | Actual  against annual target  or standard |
|-----------------------------|---|---|--|
| Education                   | 74% children of school going age enrolled in primary school <i>(Term I 2020)</i>  | 85%   | 74%  |
|                             | The pupil teacher ratio for primary schools was 1:94 <i>(Term I 2020)</i>   | 1:71  |  |
| Environment & Energy        | 6,552 households using alternative and/or renewable energy <i>(Q1 - 4 data)</i>   | 18,954 <i>(target)</i><br>1/HH <i>(standard)</i>            | 35%  |
|                             | 604 hectares of forests, wetlands, riverbanks and lakeshores protected and restored <i>(Q1 - 4 data)</i>                        | 377 ha  | >100%                                      |
| Food Security               | 226,600 refugees received monthly in-kind food assistance <i>(In Q4)</i>  | 232,697 registered refugees                                 | 97%  |
|                             | 52% of HH with poor or borderline Food Consumption Score <i>(In Q4)</i>   | 18% <i>(original 2020 target)</i><br><20% <i>(standard)</i> |  |
| Health & Nutrition          | The severe Acute Malnutrition recovery rate was 87% <i>(In Q4)</i>  | 75% <i>(target)</i><br>> 75% <i>(standard)</i>              |  |
|                             | The under-five mortality rate was 0.06 per 1,000 children <i>(In Q4)</i>  | 0.1 <i>(target)</i><br>< 1.5 <i>(standard)</i>              |  |
| Livelihoods & Resilience    | 14,156 refugee households received emergency livelihood support <i>(Q1 - 4 data)</i>  | 27,013 HHs  | 52%  |
|                             | 2,829 refugees received financial literacy training <i>(Q1 - 4 data)</i>  | 3,000 Individuals   | 94%  |
| Child Protection            | 16,849 children participated in community-based support activities <i>(Q1 - 4 Data)</i>   | 21,203 Individuals  | 79%  |
|                             | 392 SGBV survivors received appropriate multi-sectoral support <i>(Q1 - 4 data)</i>   | 450 Individuals   | 87%  |
| Protection                  | 22,447 refugees received psychosocial support <i>(Q1 - 4 data)</i>  | 60,000 Individuals  | 37%  |
|                             | 4,003 refugees received legal assistance and legal aid services <i>(Q1 - 4 data)</i>  | 18,000 Individuals<br><i>(Original 2020 target)</i>         | 22%  |
| Shelter, Settlement & NFI   | 252 refugee households with specific needs assisted with semi-permanent shelter <i>(Q1 - 4 data)</i>                            | 2,000 HHs   | 13%  |
| Water, Sanitation & Hygiene | Refugees received 18.7 litres per person per day <i>(In Q4)</i>   | 17 liters <i>(target)</i><br>20 liters <i>(standard)</i>    |  |
|                             | 68% of Refugee households had access to latrine <i>(In Q4)</i>  | 80% <i>(target)</i><br>≥ 85% <i>(standard)</i>              | 68%  |
| Cash-Based Interventions    | 2,392 households received any form of cash and voucher assistance <i>(including CBI for WASH, L&amp;R and EE) (Q1 - 4 data)</i> | 5,000 HHs   | 48%  |
|                             | 1,000 PSN households received cash and voucher assistance for basic needs <i>(including multipurpose cash) (Q1 - 4 data)</i>    | 4,000 HHs   | 25%  |



# Operational Presence

Quarter 4

## Bidibidi Refugee Settlement

January - December 2020



10

National partners



25

International NGOs



06

UN Agencies



02

Government partners



| Partner/Sector | Education | E&E      | Food Security | Health & Nutrition | Livelihood | Protection | CP       | SGBV      | SSNFI    | WASH     | CBI      |
|----------------|-----------|----------|---------------|--------------------|------------|------------|----------|-----------|----------|----------|----------|
| ACF            |           |          |               | OP                 |            |            |          |           |          |          |          |
| AIRD           |           |          |               |                    |            |            |          |           | IP       |          |          |
| Alight         |           |          |               |                    |            |            | OP       | OP        |          |          |          |
| CARE           |           |          |               |                    | IP         |            |          | IP        |          |          |          |
| Caritas        |           | OP       |               |                    | OP         | OP         |          |           |          |          |          |
| CEFORD         |           | IP       |               |                    | OP         |            |          |           |          |          |          |
| CIDI           |           | OP       |               |                    | OP         |            |          |           |          |          |          |
| CRS            | OP        |          |               |                    | OP         |            |          |           | OP       | OP       |          |
| DCA            |           | IP       |               |                    | OP         | OP         |          |           |          |          | OP       |
| DRC            |           |          |               |                    | OP         | OP         |          |           |          |          |          |
| FCA            | IP        |          |               |                    | OP         |            | OP       | OP        |          |          |          |
| HHI            |           |          |               | OP                 |            |            |          |           |          |          |          |
| HI             | OP        |          |               |                    |            |            |          |           |          |          |          |
| ICCO           |           |          |               |                    | OP         |            |          |           |          |          | OP       |
| IDI            |           |          |               | OP                 |            |            |          |           |          |          |          |
| IRC            |           |          |               | IP                 | OP         | IP         |          | IP        |          |          |          |
| JPIIIPC        |           |          |               |                    |            | OP         |          |           |          |          |          |
| MC             |           | OP       |               |                    | OP         |            |          |           |          |          | OP       |
| MdM            |           |          |               | OP                 |            |            |          |           |          |          |          |
| MSF-F          |           |          |               | OP                 |            |            |          |           |          |          |          |
| NRC            | IP        |          |               |                    | OP         | OP         |          |           |          | OP       | OP       |
| OPM            |           |          |               |                    |            | GP         |          |           |          |          |          |
| Oxfam          |           |          |               |                    | OP         |            |          |           |          |          |          |
| PACE           |           |          |               | OP                 |            |            |          |           |          |          |          |
| PLAN           | OP        |          |               | OP                 |            |            | OP       |           |          |          |          |
| PSF            |           |          |               |                    | OP         |            |          |           |          |          |          |
| PWJ            |           |          |               |                    |            |            |          |           | OP       |          |          |
| SCI            | OP        |          |               | OP                 | OP         |            | OP       | OP        |          |          |          |
| TPO            |           |          |               | OP                 | IP         | IP         |          | IP        |          |          |          |
| TWSB           | OP        |          |               |                    |            |            |          |           |          |          |          |
| UNFPA          |           |          |               | A                  |            |            |          | A         |          |          |          |
| UNHCR          | A         | A        |               | A                  | A          | A          | A        | A         | A        | A        |          |
| UNICEF         | A         |          |               | A                  |            |            | A        |           |          |          |          |
| UNWOMEN        |           |          |               |                    | A          | A          |          | A         |          |          |          |
| URCS           |           |          | OP            |                    | OP         |            |          |           |          | OP       |          |
| WCH            | OP        |          |               |                    |            | OP         | OP       |           |          |          |          |
| WFP            |           | A        | A             | A                  | A          |            |          |           |          |          | A        |
| WHH            |           |          |               |                    | OP         |            |          |           |          | OP       |          |
| WHO            |           |          |               | A                  |            |            |          |           |          |          |          |
| WMU            |           |          |               |                    |            |            |          |           |          | IP       |          |
| WVI            |           | IP       | IP            |                    | IP         |            | IP       | IP        |          | OP       | IP       |
| YDLG           | GP        |          |               | GP                 |            |            |          |           |          |          |          |
| ZOA            | OP        |          |               |                    | OP         |            |          |           |          |          |          |
| <b>Total #</b> | <b>12</b> | <b>8</b> | <b>3</b>      | <b>16</b>          | <b>23</b>  | <b>11</b>  | <b>8</b> | <b>10</b> | <b>4</b> | <b>7</b> | <b>6</b> |

A = United Nations (UN) Agency

GP = Government Partner

IP = UN Implementing Partner

OP = Operational Partner

Action Against Hunger (ACF)

African Initiatives for Relief and Development (AIRD)

Alight

Cooperative for Assistance and Relief Everywhere (CARE)

Caritas (Caritas Arua Diocese)

Community Empowerment for Rural Development (CEFORD)

Community Integrated Development Initiatives (CIDI)

Catholic Relief Services (CRS)

DanChurchAid (DCA)

Danish Refugee Council (DRC)

FInChurch Aid (FCA)

Health Home Initiative (HHI)

Humanity and Inclusion (HI)

Inter-Church Organization for Development Cooperation (ICCO)

Infectious Disease Institute (IDI)

International Rescue Committee (IRC)

John Paul II Justice and Peace Centre (JPIIIPC)

Mercy Corps (MC)

Medecins du Monde (MdM)

Medecins Sans Frontieres France (MSF-F)

Norwegian Refugee Council (NRC)

Office of the Prime Minister (OPM)

Oxfam

Programme for Accessible Health and Communication (PACE)

Plan International (PLAN)

Prime Skills Foundation (PSF)

Peace Wind Japan (PWJ)

Save the Children International (SCI)

Transcultural Psychosocial Organization (TPO)

The Walking School Bus (TWSB)

United Nations Population Fund (UNFPA)

United Nations Refugee Agency (UNHCR)

United Nations Children Emergency Fund (UNICEF)

United Nations Entity for Gender Equity and the Empowerment of Women (UNWOMEN)

Uganda Red Cross Society (URCS)

War Child Holland (WCH)

World Food Programme (WFP)

Welthunger Hilfe (WHH)

World Health Organization (WHO)

Water Mission Uganda (WMU)

World Vision International (WVI)

Yumbe District Local Government (YDLG)

ZOA International (ZOA)

Population data: proGres v4 (OPM)

Author: UNHCR Representation in Uganda

Achievements data: ActivityInfo (reported by partners and sector leads)

Feedback: Northern Region IM Support | ugakaimug@unhcr.org

Published: March 2021

For more info: [www.ugandarefugees.org](http://www.ugandarefugees.org)

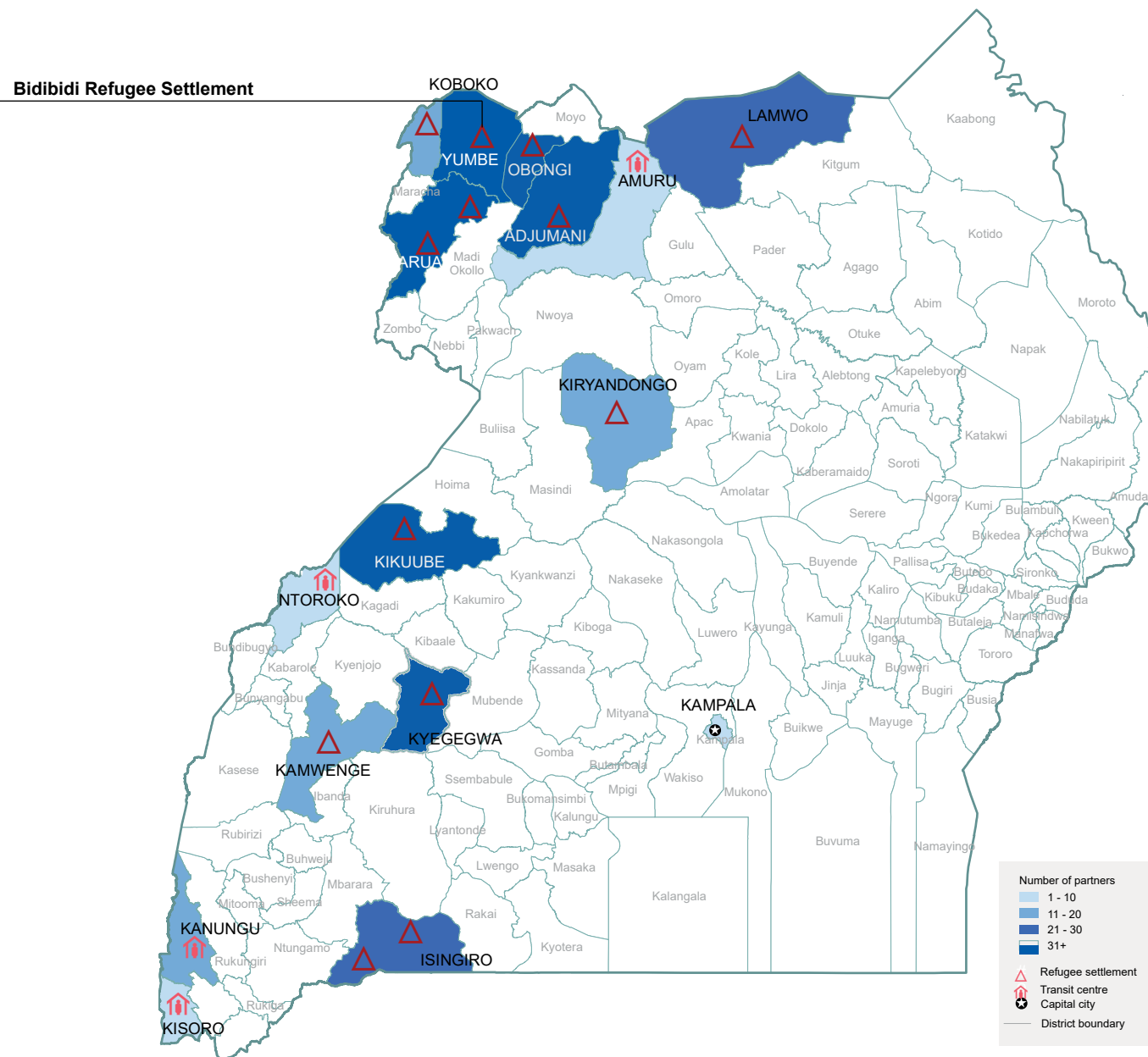


# Operational Presence

Quarter 4

## Map of Uganda Showing Location of Settlements and number of partners

January - December 2020



The boundaries and names shown and the designations on this map do not imply official endorsement or acceptance by the United Nations