

Somalia

1 - 31 August 2020

In August, 60,000 new internal displacements were monitored by the UNHCR-led Protection and Returns Monitoring Network (PRMN). Drivers include flood (43,000), drought-related (8,000), conflict and insecurity (7,000) and Other (2,000).

The floods have persisted into August, unusual in Haggaa season (Jul - Sep) which is expected to be cool, cloudy and dry. Lower (27,000) and Middle (14,000) Shabelle region were the most affected by the floods



refugees & asylum-seekers

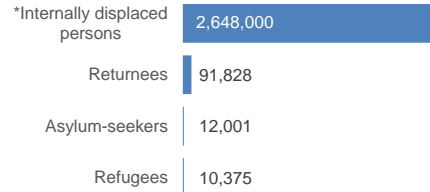
As of the reporting month, there were 22,376 refugees and asylum-seekers registered in Somalia, mainly from Ethiopia (11,813 asylum seekers and 4,077 refugees) and Yemen (5,913 refugees). 572 persons were from other countries including Syria (333), Tanzania (118), Eritrea (83) among others. Verification and biometric registration of refugee/asylum-seekers was completed across the country, on 6 Aug 2020. The results show a reduction of approximately 38% of the population, from estimated 35,724 to 22,376.



refugee returnees (2014 - 2020)

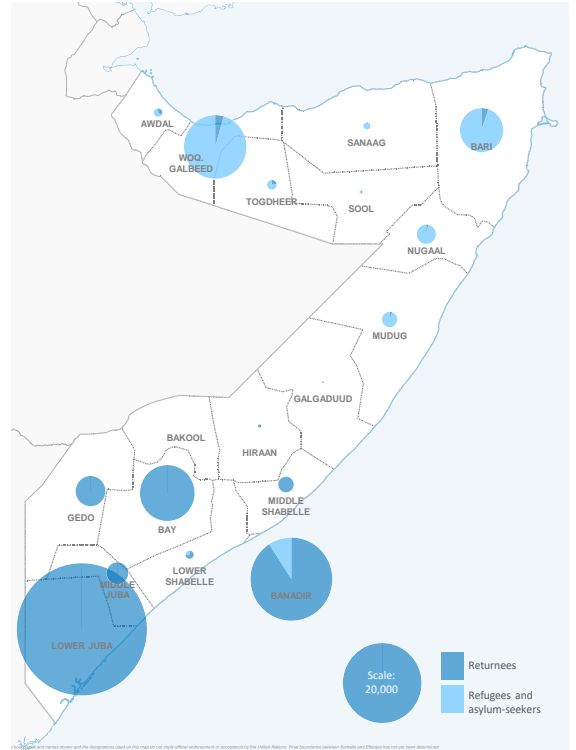
Since December 2014, 91,828 Somali refugees have voluntarily returned to Somalia with UNHCR assistance from different countries of asylum including Kenya, Yemen, Djibouti, Libya, Sudan and Eritrea. In addition, some 38,679 Somalis were monitored as arriving from Yemen since March 2015. Figures for total returnees from Djibouti have been adjusted downwards by 49 as a result of double counting in reporting for arrivals in Oct 2018

Population of concern



*Estimated internally displaced persons as of 31 July 2018 (Source: Information Management Working Group)

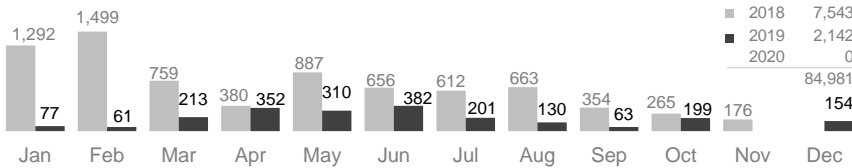
Returnees, refugee and asylum seekers map



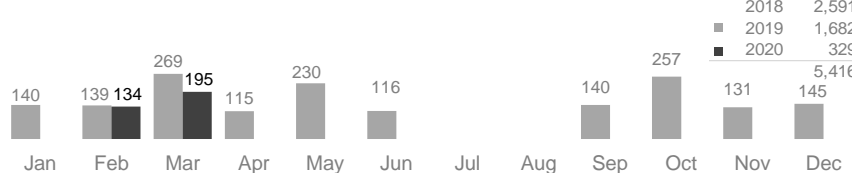
Region	Ethiopia	Yemen	Other
Woq. Galbeed	9,146	2,485	397
Bari	4,663	1,126	5
Nugaal	966	186	13
Mudug	740	10	2
Togdheer	158	67	24
Sanaag	145	14	4
Awdal	50	111	8
Banadir	14	1,846	119
Sool	7	12	
Middle Shabelle		1	
Lower Shabelle		55	
Other	1		
TOTAL	15,890	5,913	572

Region	Kenya	Yemen	Other
Lower Juba	54,374	16	126
Banadir	15,468	4,120	785
Bay	9,655	83	3
Gedo	2,922	2	33
Middle Juba	1,539		1
Middle Shabelle	798	41	25
Lower Shabelle	104	79	1
Hiraan	42	6	22
Woq. Galbeed	18	527	210
Galgaduud	15		3
Nugaal	13	29	16
Other	33	513	206
TOTAL	84,981	5,416	1,431

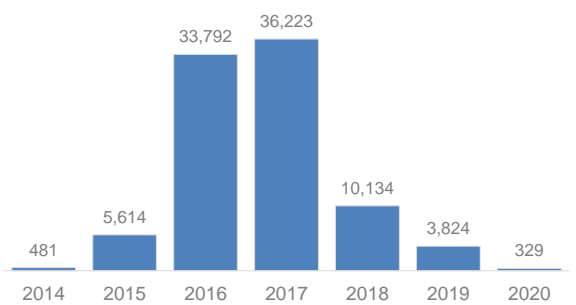
Somali returnees from Kenya by month



Assisted spontaneous returnees from Yemen by month



Number of returnees (with assistance from UNHCR) since 2014



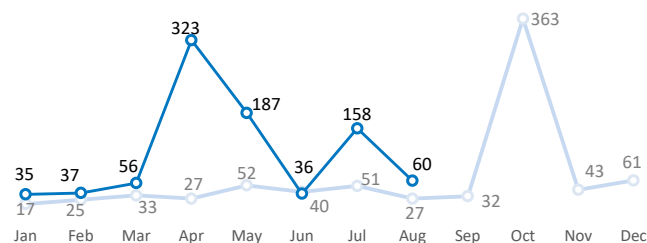
Somalia Internal DISPLACEMENT

Displacements monitored by UNHCR Protection and Return Monitoring Network (PRMN)

Monthly internal displacement (2019-2020)

(in thousands)

Year	People
2019	770,000
2020	893,000



2020 displacement reasons

Flood	633,000
Conflict/Insecurity	177,000
Drought related	71,000
Other	13,000
Total	893,000

2020 top arrival regions

Hiraan	265,000
Middle Shabelle	125,000
Lower Shabelle	116,000
Banadir	82,000
Gedo	64,000
Bay	51,000
Bari	37,000
Lower Juba	32,000
Other	122,000
Total	893,000

August 2020 displacement reasons

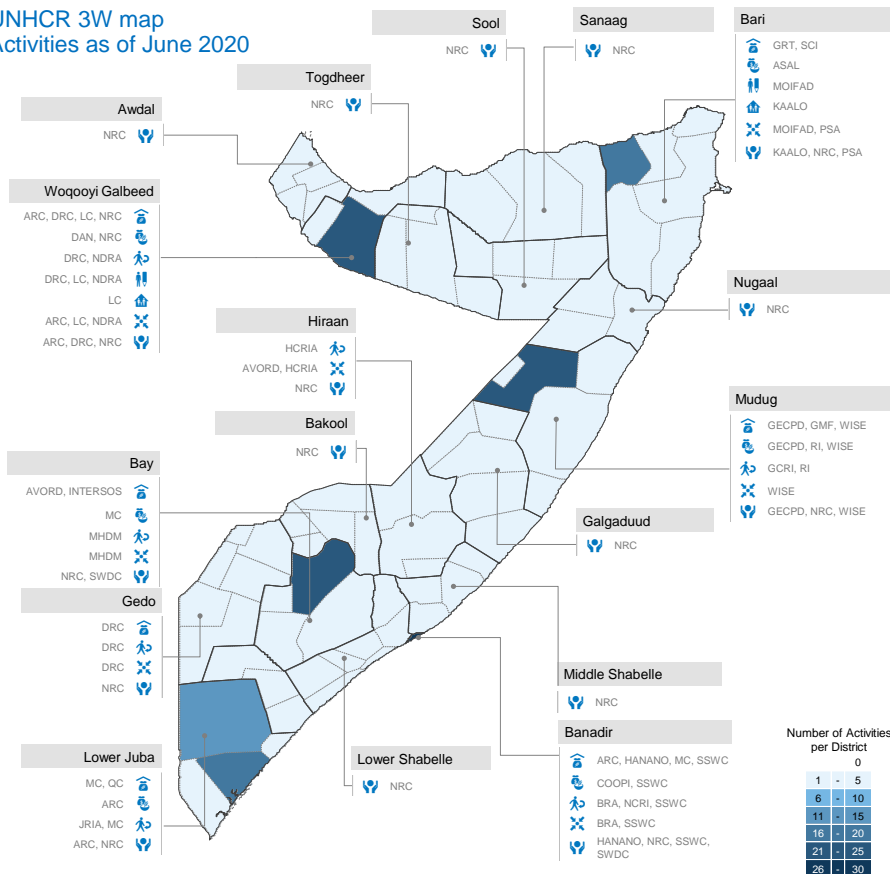
Flood	43,000
Drought related	8,000
Conflict/Insecurity	7,000
Other	2,000
Total	60,000

August 2020 top arrival regions

Lower Shabelle	20,000
Banadir	13,000
Middle Shabelle	11,000
Sool	3,000
Bari	2,000
Gedo	2,000
Bay	2,000
Middle Juba	1,000
Other	
Total	60,000

Somalia

UNHCR 3W map
Activities as of June 2020



Number of activities by region and category

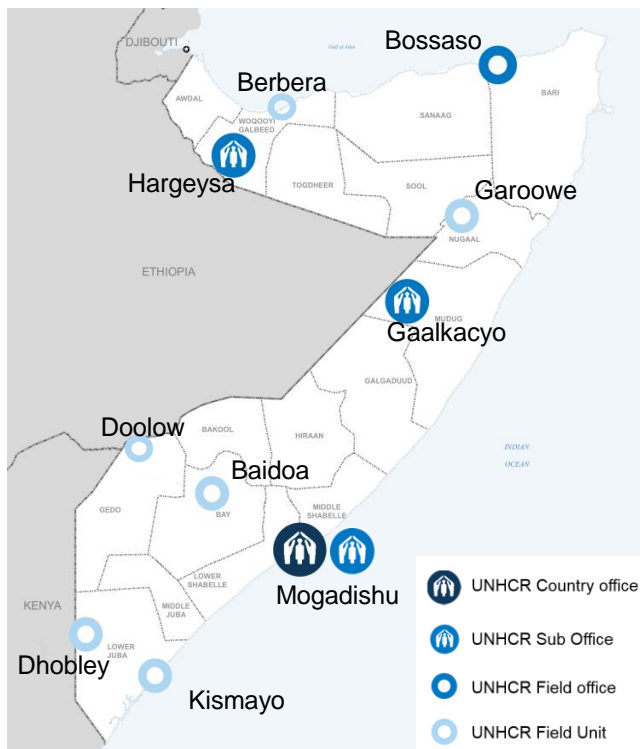
Region	Basic Needs	Leadership	Favourable Protection	Fair Protection	Durable Solutions	Security	Community Empowerment	Logistics	Total
Awdal									4
Bakool									5
Banadir	10	3	3						9
Bari	6	2	1	4	1				8
Bay	8	3	3						12
Galgaduud									5
Gedo	2				2				6
Hiraan				1					3
Middle Juba									3
Lower Juba	11	1	6						19
Mudug	5	3	4	1				1	11
Nugaal									3
Sanaag									4
Middle Shabelle									4
Lower Shabelle									7
Sool									4
Togdheer									4
Woqooyi Galbeed	6	3	5	2	3	1			6

Category	Sub-category
BASIC NEEDS AND ESSENTIAL SERVICES	Water, Transport, Cash Grants, Core Relief Items, Education, Health
LEADERSHIP, COORDINATION AND PARTNERSHIPS	Cluster Coordination - Protection, Shelter, CCCM
FAVOURABLE PROTECTION ENVIRONMENT	Facility Rehabilitation, Equipment, Peaceful Coexistence
FAIR PROTECTION PROCESSES AND DOCUMENTATION	Registration, Profiling, Civil Documentation
DURABLE SOLUTIONS	Return Assistance, Transit Center, Counseling
SECURITY FROM VIOLENCE AND EXPLOITATION	Legal Protection, SGBV Prevention & Response, Material Assistance, PRMN
COMMUNITY EMPOWERMENT, SELF RELIANCE AND SELF MANAGEMENT	Cash Grants, Employment, Business, Vocational Training
LOGISTICS AND OPERATIONS SUPPORT	PDM, Warehouse Management, Transport

UNHCR Presence

Staff
117 National Staff
41 International Staff
27 Affiliate Workforce

Offices
1 Country Office in Mogadishu
3 Sub-Offices in Gaalkacyo, Hargeysa and Mogadishu
1 Field Office in Bossaso
6 Field Units in Baidoa, Dhobley, Garoowe, Kismayo, Berbera and Doolow
1 Support Office in Nairobi



Contact
Johann Siffointe, Representative, Somalia
siffoint@unhcr.org, Cell: +252 616 141 315, Cell: +254 731 688 141

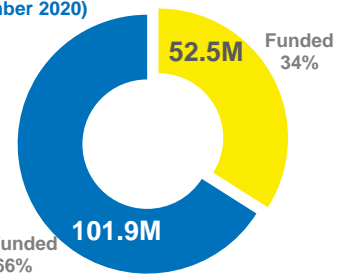
Links
[Somalia: Global Focus](#) - [Somalia: Information sharing portal](#) - [UNHCR Somalia](#) - [@UNHCRSom](#) - [Facebook: UNHCR Somalia](#) - [Somalia internal displacement](#)

UNHCR is grateful for the generous contributions of donors who have directly contributed to the UNHCR Somalia operation in 2020



Funding (as of 22 September 2020)

USD 154.4 M requested for Somalia



UNMARKED CONTRIBUTIONS | USD

Sweden 76.4 million | Private donors Spain 52.9 million | Norway 41.4 million | Netherlands 36.1 million | Denmark 34.6 million | United Kingdom 31.7 million | Private donors Republic of Korea 27.2 million | Germany 25.9 million | Private donors Japan 17.9 million | Switzerland 16.4 million | France 14 million | Private donors Italy 12.4 million | Italy 10.6 million

Australia | Austria | Azerbaijan | Belgium | Bulgaria | Costa Rica | Estonia | Finland | Holy See | Iceland | Indonesia | Ireland | Kuwait | Liechtenstein | Lithuania | Luxembourg | Malta | Monaco | Montenegro | New Zealand | Peru | Philippines | Portugal | Qatar | Republic of Korea | Russian Federation | Saudi Arabia | Serbia | Singapore | Slovakia | South Africa | Sri Lanka | Thailand | Turkey | United Arab Emirates | Uruguay | Private donors

OTHER SOFTLY EARMARKED CONTRIBUTIONS | USD

Germany 68.4 million | United States of America 46.7 million | United Kingdom 24.8 million | Denmark 14.6 million | Canada 10.2 million | Private donors Australia 8.4 million | Private donors USA 7.7 million | Private donors Japan 4.4 million | Private donors Germany 3.5 million | Spain 3.4 million | Ireland 3.3 million | Sweden 3 million | France 2.8 million | Private donors United Kingdom 2.3 million

Holy See | Iceland | Jersey | Liechtenstein | Luxembourg | Morocco | Norway | Private donors