

A young child with dark skin and short hair is smiling and holding a traditional harp-like instrument. The instrument has a long wooden neck with several metal pegs and strings. The child is wearing a light-colored, sleeveless top. The background shows a dirt path, green foliage, and a dark building. The text "Review of Mid Year and Reporting on RRP" is overlaid on the right side of the image.

Review of Mid Year and Reporting on RRP

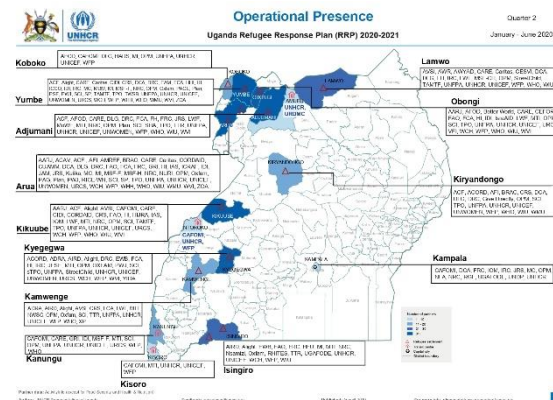
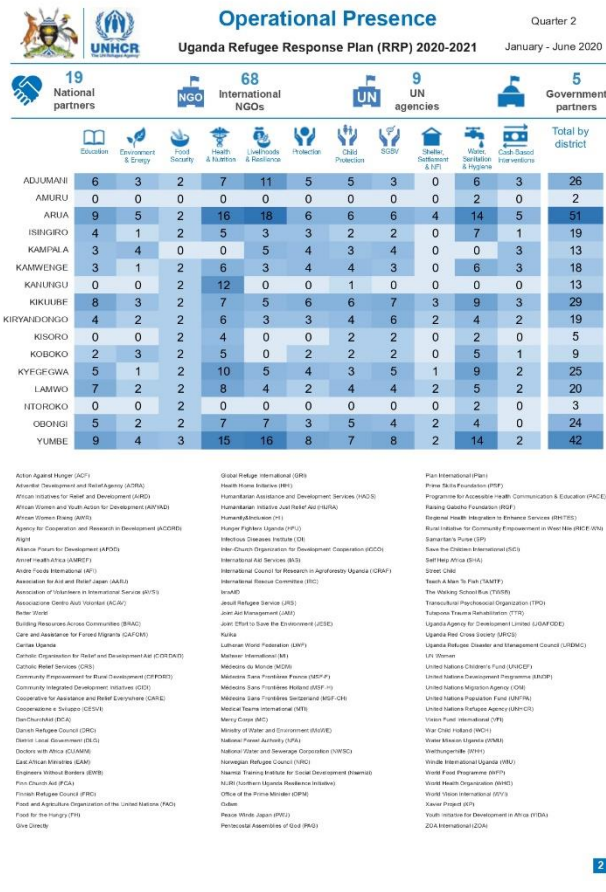
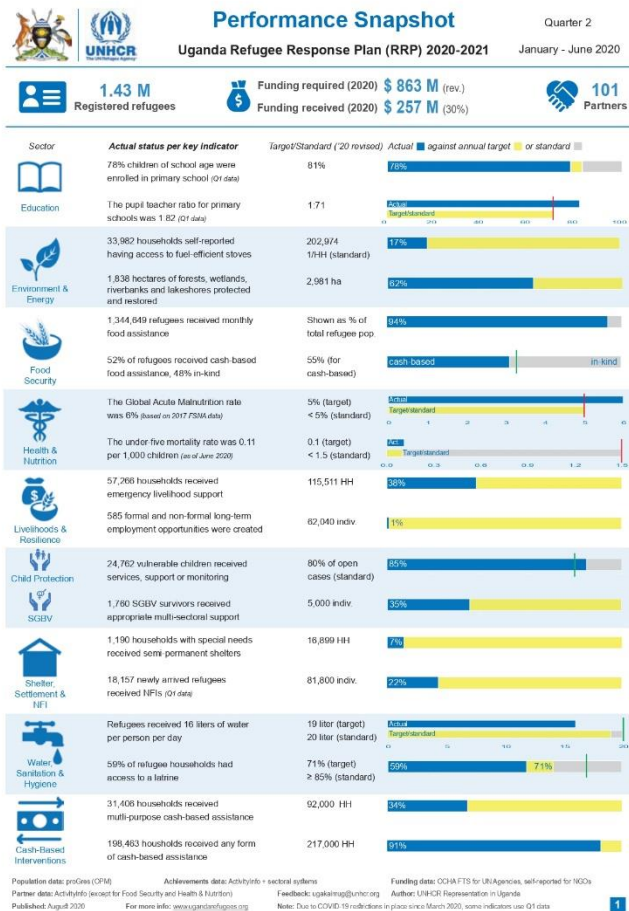
Overview of Mid Year/Q2

- Revision of RRP 2020 - 2021
- Two year planning cycle
- 63 partners reported
- Q2 Products
 - Performance Snapshot
 - National Sector dashboards
 - Settlement level dashboards

Performance Snapshot

Frequency: Quarterly

Content: Information on the sectors, partners on the indicators and entire operation (Achievements, targets, challenges, way forward, funding, partners)



Sector Factsheets

Frequency: Quarterly

Content: Information on the sectors, partners on the indicators and entire operation (Achievements, targets, challenges, way forward, funding, partners)

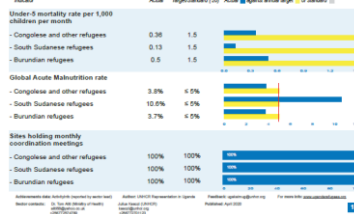
Health & Nutrition Dashboard

Uganda Refugee Response Plan (RRP) 2019-2020

Overview
The sector's main objective is to ensure full integration of comprehensive primary health care services for refugees into national and local government systems, in line with the Health Sector Integrated Response Plan (HSIRP) 2019-2020, launched in January 2019.



Objective: Provide emergency life-saving health and nutrition interventions for new refugee arrivals and strengthen national preparedness and response

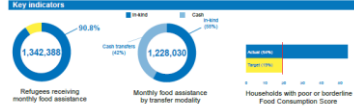


Food Security Dashboard

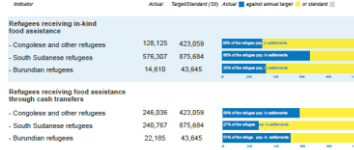
Uganda Refugee Response Plan (RRP) 2019-2020

Overview
The provision of general food assistance continues to meet the immediate food and nutrition needs of refugees, with strengthening their livelihoods and promoting food security. Refugees entering the country were provided with high-energy rations at the border crossing points and hot meals in reception centres. A selling-in ration was provided to refugees relocated to settlements, with subsequent monthly food for cash support.

Key indicators
Refugees receiving food assistance: 1,342,388 (98.8% of total)



Objective: Refugees have access to adequate nutritious food to meet their basic food and nutritional needs



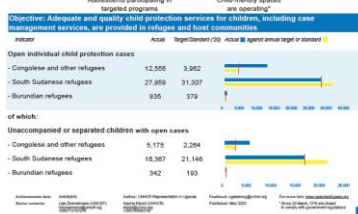
Child Protection Dashboard

Uganda Refugee Response Plan (RRP) 2019-2020

Overview
As of 31 March, Uganda hosts 438,702 refugee children, including 14,536 children at risk of child 4 (C4) are unaccompanied or separated from parents or other family members. Child protection activities continue to provide comprehensive case management for children at risk, including those unaccompanied or separated as well as support through community-based child protection structures, psychosocial support and individual assistance where required.



Objective: Adequate and quality child protection services for children, including case management services are provided in informal and host communities



WASH Dashboard

Uganda Refugee Response Plan (RRP) 2019-2020

Overview
The sector's ultimate goal is to ensure that refugees and hosting populations have basic and sufficient access to quality water and improved sanitation and hygiene services, including at household level and in institutions such as schools and health facilities. More efforts are needed to shift from a humanitarian to a market-driven and development approach via the use of Environmental WASH programmes, with people's needs and the environment at the centre of any intervention.

Key indicators
Litres per person per day: 19 (Target: 19)



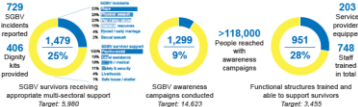
Objective: Access to water supply for refugees and hosting populations improves



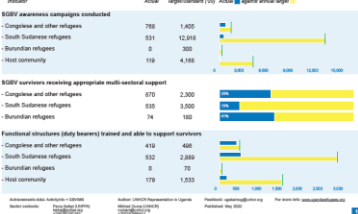
GBV Dashboard

Uganda Refugee Response Plan (RRP) 2019-2020

Overview
Awareness-raising remains key to improve understanding of GBV, Sexual Exploitation and Abuse (SEA), human trafficking and existing mechanisms to report such incidents, including through the development and dissemination of simplified referral pathways. Basic assistance for vulnerable individuals will continue with a view to reduce reliance on negative coping mechanisms and exposure to GBV risk. Investment in infrastructure and assets is also crucial in preventing and responding to GBV, including installation of security lights in common areas, establishment of safe spaces and wellness centres for women, psychological, medical and legal support for GBV survivors, and provision of additional vehicles and motorcycles to enhance police mobility on patrol and outreach. Linkage with the Livelihoods & Resilience sector are of particular importance, both in terms of prevention (economic empowerment of men and women) and response (livelihood support for GBV survivors).



Objective: Protection systems are strengthened and refugees women and girls are aware of the existing referral pathways with the aim of ensuring their full enjoyment of rights, reduction of GBV risks and sustained social emotional response leading to high mainstreaming of GBV across all sectors

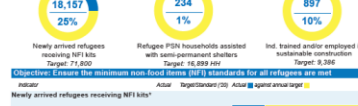


Shelter, Settlement & NFI Dashboard

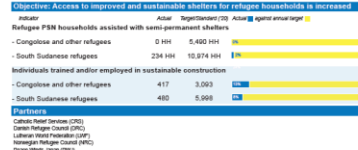
Uganda Refugee Response Plan (RRP) 2019-2020

Overview
The sector aims to ensure that all populations of concern receive appropriate and timely shelter and non-food item (NFI) support in line with the minimum acceptable standards for Uganda. Direct shelter and technical support to the construction of emergency and semi-permanent shelters for persons with specific needs remains a priority, although the modalities include market and community-based approaches for a wider and more sustainable reach. Ongoing repairs and maintenance works to communal shelters at operational formal facilities are continuing as needed.

Key indicators
Newly arrived refugees receiving NFI kits: 18,167 (25% of target)



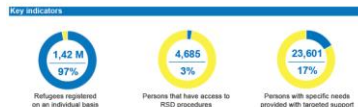
Objective: Ensures the minimum non-food items (NFI) standards for all refugees are met



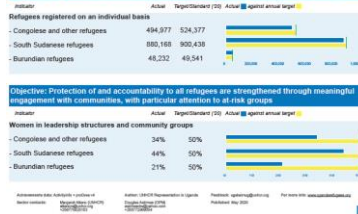
Protection Dashboard

Uganda Refugee Response Plan (RRP) 2019-2020

Overview
The overall protection objective is to ensure that refugees and asylum-seekers have access to territorial asylum, fair and self-employment opportunities as well as full enjoyment of their rights as set forth in international and domestic laws. It remains crucial for partners to continue strengthening the capacity of government institutions to respond to emergencies, supporting improvements in registration and the asylum system whilst ensuring provision of life-saving services, monitoring and mitigation of protection risks.



Objective: Registration conducted on an individual basis with minimum set of data required



Cash-Based Interventions Dashboard

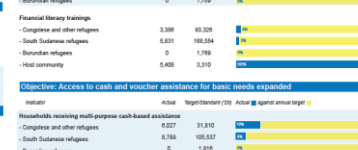
Uganda Refugee Response Plan (RRP) 2019-2020

Overview
The response needs to explore opportunities to transition from in-kind to cash-based assistance, to the extent possible. The rejection of cash, through unconditional multi-purpose and conditional cash-based interventions will have multiple effects on food security, social cohesion, reduction of self-dependency, and productive engagement of the youth, among others. The established reference Minimum Expenditure Basket (MEB) tool will ultimately support the cost efficiency and cost effectiveness, and pave the way for robust multi-purpose cash programming and delivery. It will be a critical source of information in determining the level of assistance to refugees (or their transfer value) and in establishing price lines for project design, in harmony with the objectives of a given programme. The vulnerability of the target group and gap analysis at a settlement level. Partners continue efforts to establish a common platform for cash-based programmes.

Key indicators
Households receiving multi-purpose cash-based assistance: 14,616 (16% of target)



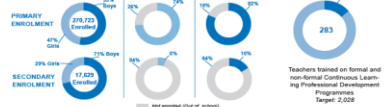
Objective: Financial inclusion and access to financial services promoted



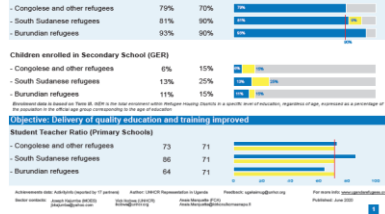
Education Dashboard

Uganda Refugee Response Plan (RRP) 2019-2020

Overview
The main objective of the 2019-2020 Education Sector strategy, in alignment with the Education Response Plan for Refugees and Host Communities in Uganda (ERP), is to provide refugees and host community girls and boys with equitable and inclusive access to a quality education and to strengthen systems at the national, district and community levels.



Objective: Equitable access and inclusive relevant learning opportunities increased needs



Livelihoods & Resilience

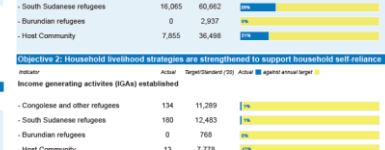
Uganda Refugee Response Plan (RRP) 2019-2020

Overview
Partners endeavor to stabilize and build livelihoods, sustainable and resilient livelihoods, with emergency livelihood interventions serving as a basis to develop longer-term strategies. In acknowledging that the time refugees have been displaced is not closely related with their degree of vulnerability, emergency livelihood support targets new refugee arrivals and vulnerable long-term refugees, in line with individual skills, knowledge and experience. Emergency livelihood support promotes immediate job creation, supported by initial capacity building.

Key indicators
Households that received emergency livelihood support: 152,009 (18% of target)



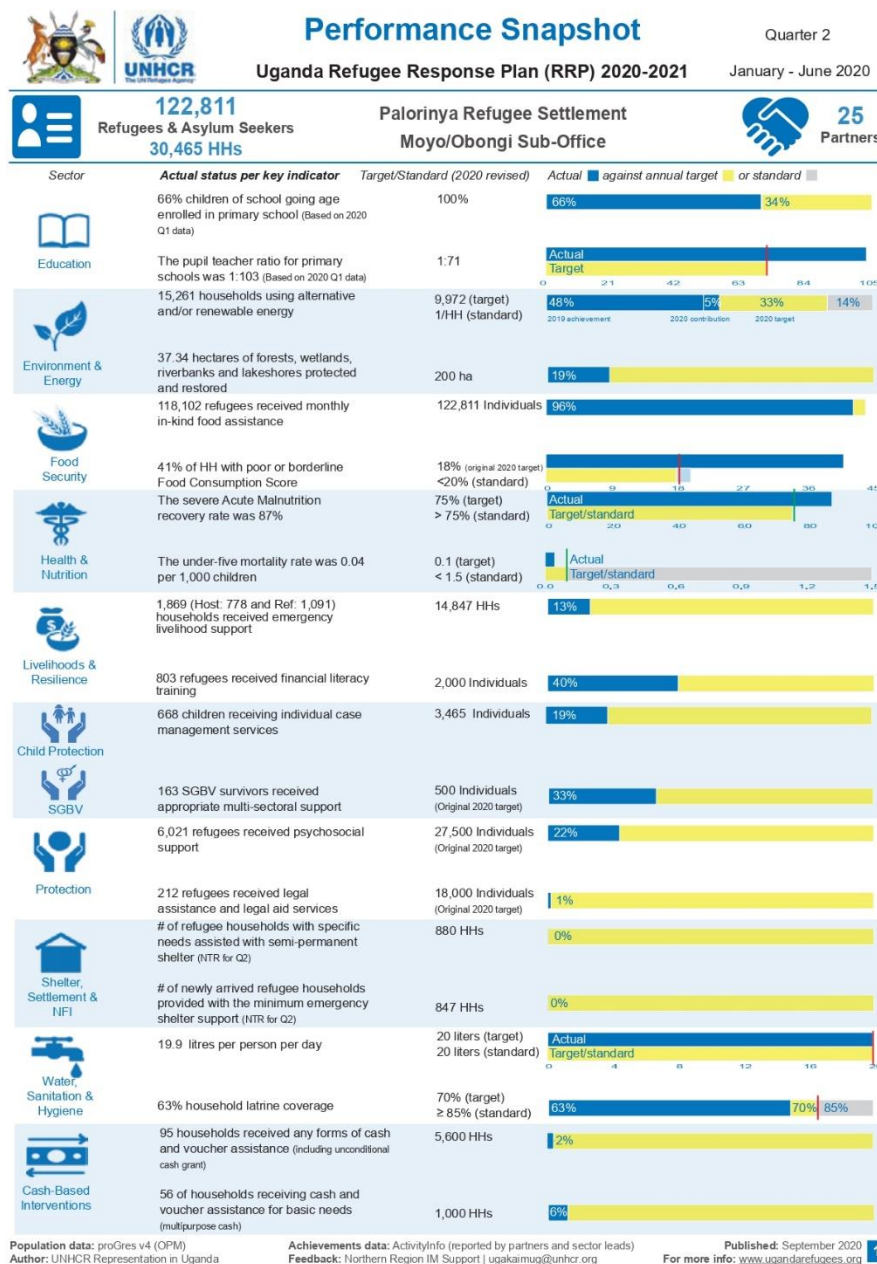
Objective 1: Emergency livelihood support to complement basic household needs is provided



Settlement Factsheets


Frequency: Quarterly

Content: Information on the sectors, partners on the indicators and entire operation (Achievements, targets, challenges, way forward, funding, partners)



Settlement Operational presence

Frequency: Quarterly
Content: Information on the sectors, partners, location of intervention and partnership modality

Operational Presence												Quarter 2
Palorinya Refugee Settlement												January - June 2020
04 National partners			12 International NGOs			06 UN Agencies			03 Government Partners			
												
Partner/Sector	Education	E&E	Food Security	Health & Nutrition	Livelihood	Protection	CP	SGBV	SSNFI	WASH	CBI	
AARJ	OP											
AFOD			IP									
AIRD									IP			
Better World										OP		
FAO		A										
FCA	IP				OP							
HI	OP											
IDI				OP								
IsraAID							OP					
LWF		IP			OP	IP	IP	IP	OP	IP	OP	
MoDLG				GP								
MTI				IP								
ODLG				GP								
OPM						GP						
SCI							IP					
TPO						OP						
UNFPA				A				A				
UNHCR	A	A		A		A	A	A	A	A	A	
UNICEF				A			A					
URCS										OP		
VFI					OP							
WFP			A	A								
WHO				A								
WIU	OP											
WVI					OP							
Total #	5	3	2	9	4	4	5	3	3	4	2	
GP = Government Partner IP = Implementing Partner OP = Operational Partner												
Association for Aid and Relief Japan (AARJ)				IsraAID				United Nations Refugee Agency (UNHCR)				
Alliance Forum for Development (AFOD)				Lutheran World Federation (LWF)				United Nations Children Emergency Fund (UNICEF)				
African Initiatives for Relief and Development (AIRD)				Moyo District Local Government (MoDLG)								
Better World				Medical Teams International (MTI)				Uganda Redcross Society (URCS)				
Food and Agriculture Organization of the United Nations (FAO)				Obongli District Local Government (ODLG)				Vision Fund International (VFI)				
FinChurch Aid (FCA)				Office of the Prime Minister (OPM)				World Food Programme (WFP)				
Humanity & Inclusion (HI)				Save the Children International (SCI)				World Health Organization (WHO)				
Infectious Disease Institute (IDI)				Transcultural Psychosocial Organization				Windle International Uganda (WIU)				
				(TPO)				World Vision International (WVI)				
				United Nations population Fund (UNFPA)								

RRP monitoring Q3 July - Sept. 2020

- Based on revised results framework
- ActivityInfo training completed (> 170 participants)
- Reporting deadline **15 October 2020*** (51 partners reported)
- Sector lead validation: **28 October 2020**
- Dissemination: **6 November 2020**

✓ *What is New?*

Feedback from Q2 implemented

- Nothing to report (NTR) forms added for all sectors
- Change of location: Terego & Madi Okollo districts
- Alignment of the education indicators to ERP
- Disaggregation of indicators by age and gender e.g. #feedback/complaints addressed through feedback mechanisms

* Extend to 22 October 2020

Refugees Web portal

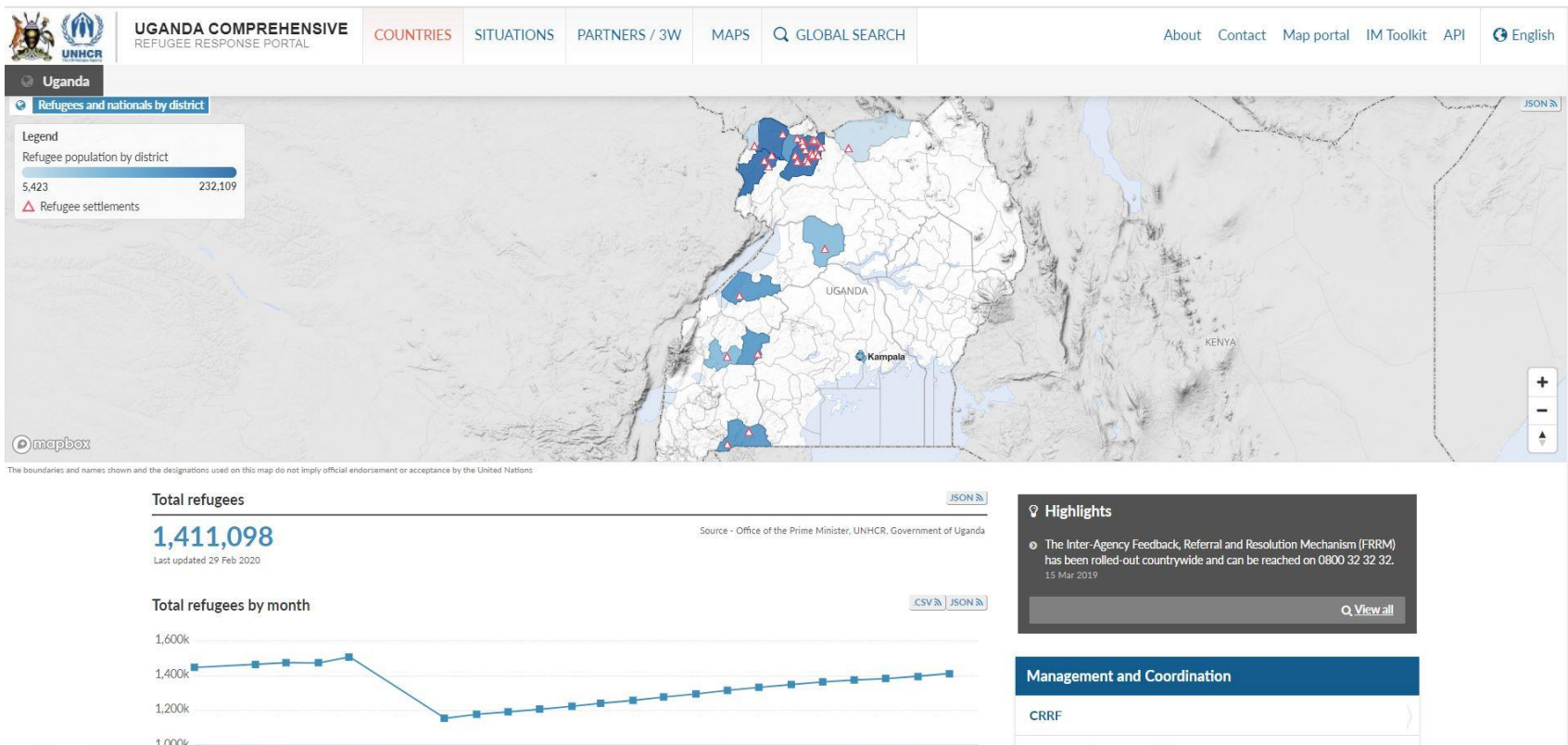


Frequency: Online

Accessed at: <http://ugandarefugees.org>

Content: Web site showing all maps and documents. Dynamic maps for whole country and district level maps.

Static documents and dashboards are uploaded there



THANK YOU