

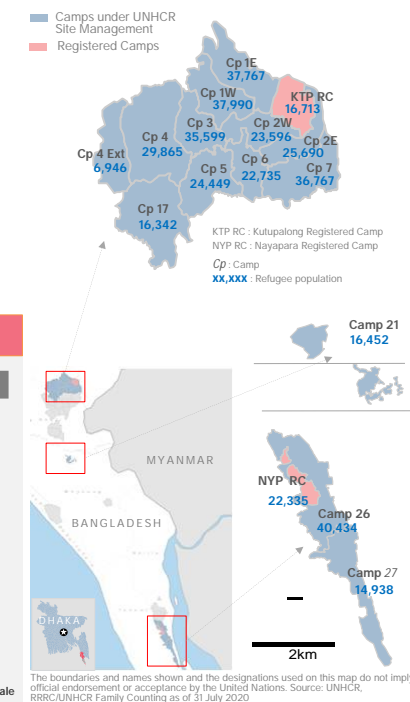
SITUATION OVERVIEW

More than 860,400 Rohingya refugee women, men, girls and boys are hosted in Cox's Bazar District, including 35,060 registered refugees who arrived in the 1990s (4%), and other unregistered Rohingya refugees who had settled in host communities prior to August 2017. Children make up 52% of the total refugee population and women and girls make up 51%.

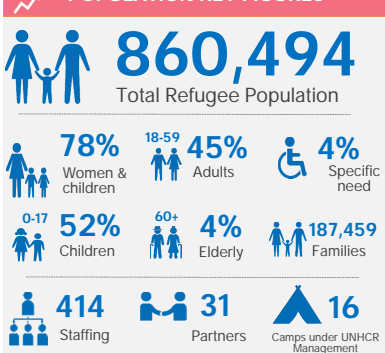
The humanitarian situation in Cox's Bazar has been affected by the spread of the COVID-19 pandemic. In Cox's Bazar, only critical activities approved by the Refugee Relief and Repatriation Commissioner are possible in the camps for the time being. UNHCR continues to provide critical services focusing on Protection, Health, WASH, nutrition, fuel support (LPG) and other non-food items, and other activities as part of its communication with the community.

This dashboard monitors the progress being made to deliver protection and assistance activities with reference to selected indicators from UNHCR Bangladesh's 2020 country operations plan. It provides an overview for each strategic area of activity with cumulative key figures and monthly highlights.

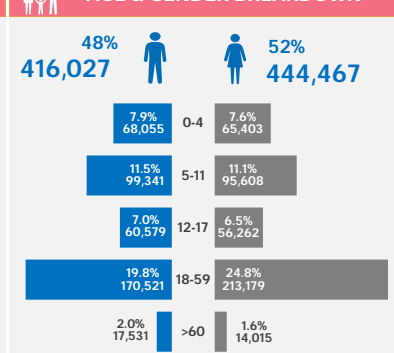
GEOGRAPHIC SITUATION



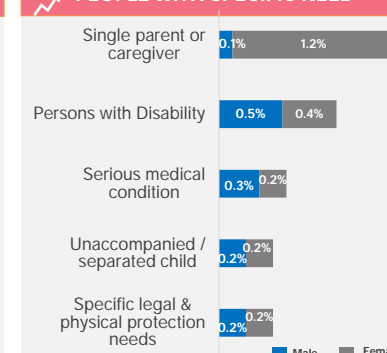
POPULATION KEY FIGURES



AGE & GENDER BREAKDOWN

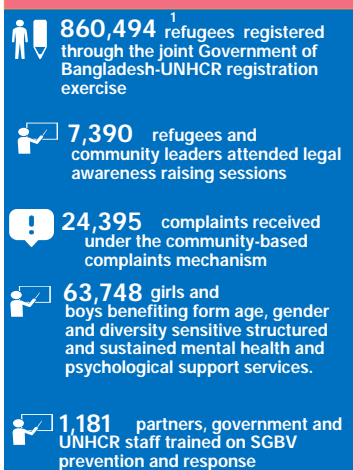


PEOPLE WITH SPECIFIC NEED

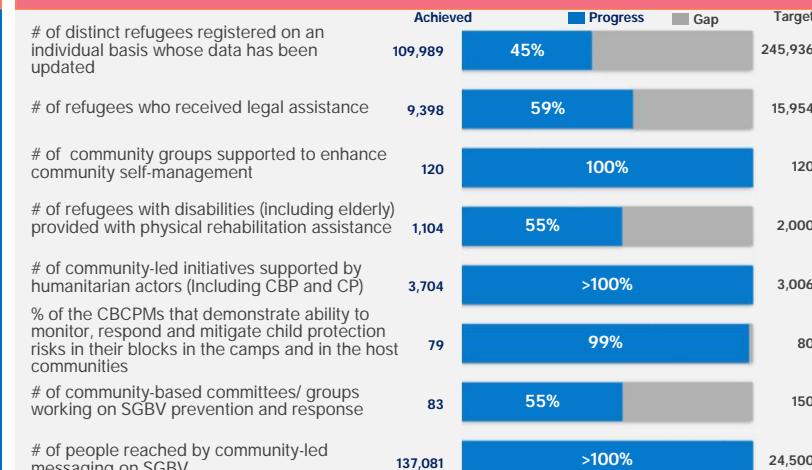


PROTECTION

KEY FIGURES



PROGRESS AGAINST 2020 TARGETS



ACHIEVEMENTS (JULY 2020)

- **3,283** individuals whose records have been updated as part of the joint exercise.
- **17** monitoring visits to detention centers were conducted.
- **2,517** complaints received under the community-based complaints mechanism.
- **402** partners, government and UNHCR staff trained on SGBV prevention and response.
- **331** adolescents participated in targeted programmes.

EDUCATION

KEY FIGURES



PROGRESS AGAINST 2020 TARGETS



ACHIEVEMENTS (JULY 2020)

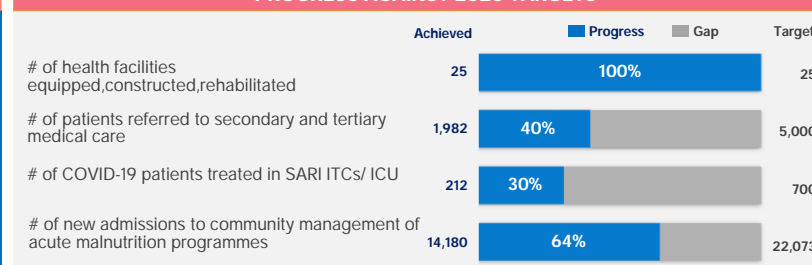
- Due to COVID-19 pandemic the usual learning activities have been suspended. Nonetheless, UNHCR worked with the education sector partners to disseminate caregiver-led education guidelines in the camps to support caregivers and parents in facilitating some learning in their homes while the facilities remain closed.

HEALTH & NUTRITION

KEY FIGURES



PROGRESS AGAINST 2020 TARGETS





ACHIEVEMENTS (JULY 2020)


- **43,051** primary health care consultations were provided in health facilities.
- **100** new admissions of COVID-19 patients.
- **648** mental health consultations were conducted and **22,212** refugees participated in group psycho-social activities.
- **3,483** new admissions to community management of acute malnutrition programmes reported.


WASH

KEY FIGURES

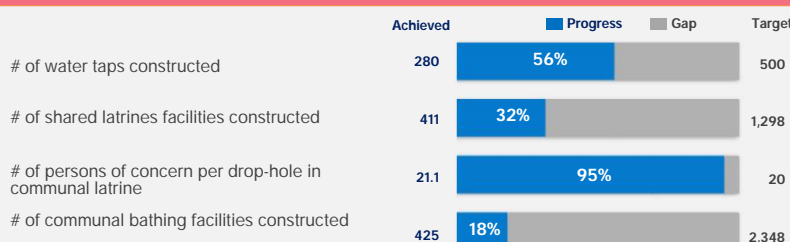
 **39,583** WASH facilities assessed during a sweep survey in 2019

 **574** Hygiene volunteers

 **464** WASH hygiene kits distributed

 **28,850** tube well and latrine maintenance conducted (repair, renovate, decommission and desludge)

PROGRESS AGAINST 2020 TARGETS





ACHIEVEMENTS (JULY 2020)


- 135** WASH facilities (latrines) constructed.
- 6,824** WASH facilities were provided with some maintenance, including **2,147** tube wells and **4,677** latrines.

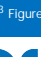
SHELTER


KEY FIGURES ³


 **28** km of roads and pathways

 **79** km of drainage

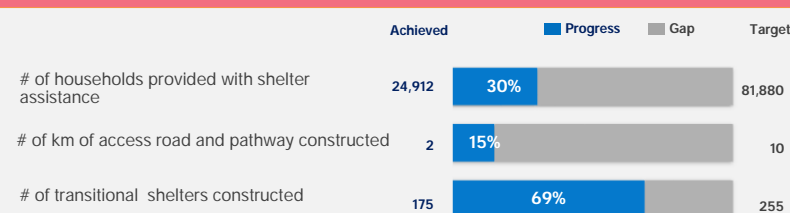
 **63** km of retaining structures

 **33** km of steps and

 **4.8** km of bridges constructed

 **176,156** shelter tie down kits distributed

PROGRESS AGAINST 2020 TARGETS



ACHIEVEMENTS (JULY 2020)

- 9,050** partial shelter repair and replacement kits distributed.
- 56** transitional shelters have been constructed.
- 81,000** households receiving each one tarpaulin.
- 7,224** households received emergency shelter assistance.

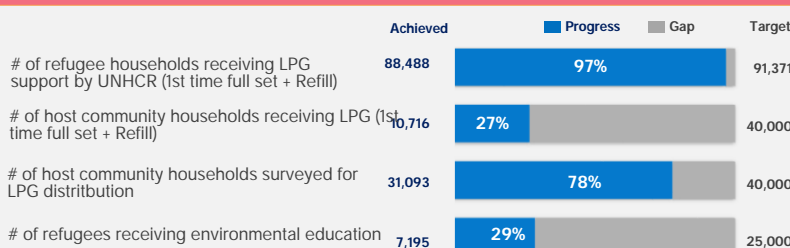
ENVIRONMENT & ENERGY

KEY FIGURES

 **31,093** host community households have been surveyed during LPG distribution assessment

 **45** conflicts with elephants successfully mitigated by trained ERT* members

PROGRESS AGAINST 2020 TARGETS





ACHIEVEMENTS (JULY 2020)


- 103** refugee households received 1st time LPG cylinder while LPG refills were distributed to **80,296** refugee households.
- 9,881** host community households have received LPG refill.

NFI & SITE MANAGEMENT

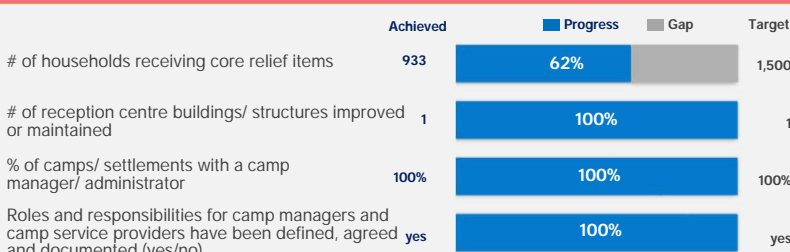
KEY FIGURES

 **39,200** Emergency shelter and WASH kit (PDK) pre-positioned

 **16** camps managed by site management support agency partners

 **187,056** female menstrual hygiene kits distributed

PROGRESS AGAINST 2020 TARGETS



ACHIEVEMENTS (JULY 2020)

- 44,994** female menstrual hygiene kits distributed to women age 12 to 59 year old.
- 33,708** households received double ration of bathing and laundry soap.

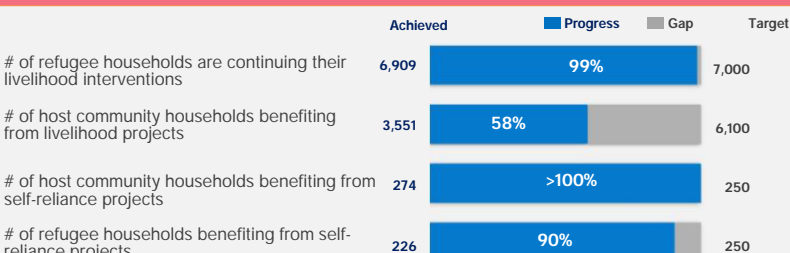
SOCIAL COHESION

KEY FIGURES

 **3,551** host community and **6,909** refugee households are continuing to participate livelihood programmes

 **500** host community and refugee households enrolled for skill development training for ensuring their self-reliance

PROGRESS AGAINST 2020 TARGETS



ACHIEVEMENTS (JULY 2020)

- 3,386** new refugee households included to be benefitted from 2020 livelihood projects.
- 1,668** host community households have started their livelihood interventions with UPGP projects.

THANK YOU

UNHCR's humanitarian response in Bangladesh is made possible thanks to the generous support of major donors who have contributed unrestricted funding to UNHCR's global operations, and to donors who have generously contributed directly to UNHCR Bangladesh operations.

In 2020, continued generous support has been received from the governments of: **Australia, Canada, Denmark, the European Union, France, Germany, Ireland, Italy, Japan, the Republic of Korea, the Netherlands, New Zealand, Norway, Sweden, Switzerland, the United Kingdom, and the United States of America.**

UNHCR is sincerely grateful for the additional support received from many individuals, foundations, and companies worldwide including: **Bill & Melinda Gates Foundation, CERF, Education Cannot Wait, and Thani Bin Abdullah Bin Thani Al-Thani Humanitarian Fund.**