



**DAILY UPDATE CORONAVIRUS DISEASE-19**

As of 24 March 2020, 4 new countries registered COVID-19. Europe remains the epi-center. No new countries in the WHO Afro Region.

WHO reported confirmed COVID-19, 372 757 (39 827 new) cases and 16 231 (1722 new) deaths, CFR 4.4% have been reported globally. In WHO Africa Region, 1305 (315 new) confirmed cases and 26 (3 new) deaths, CFR 2.0% in 37 countries.

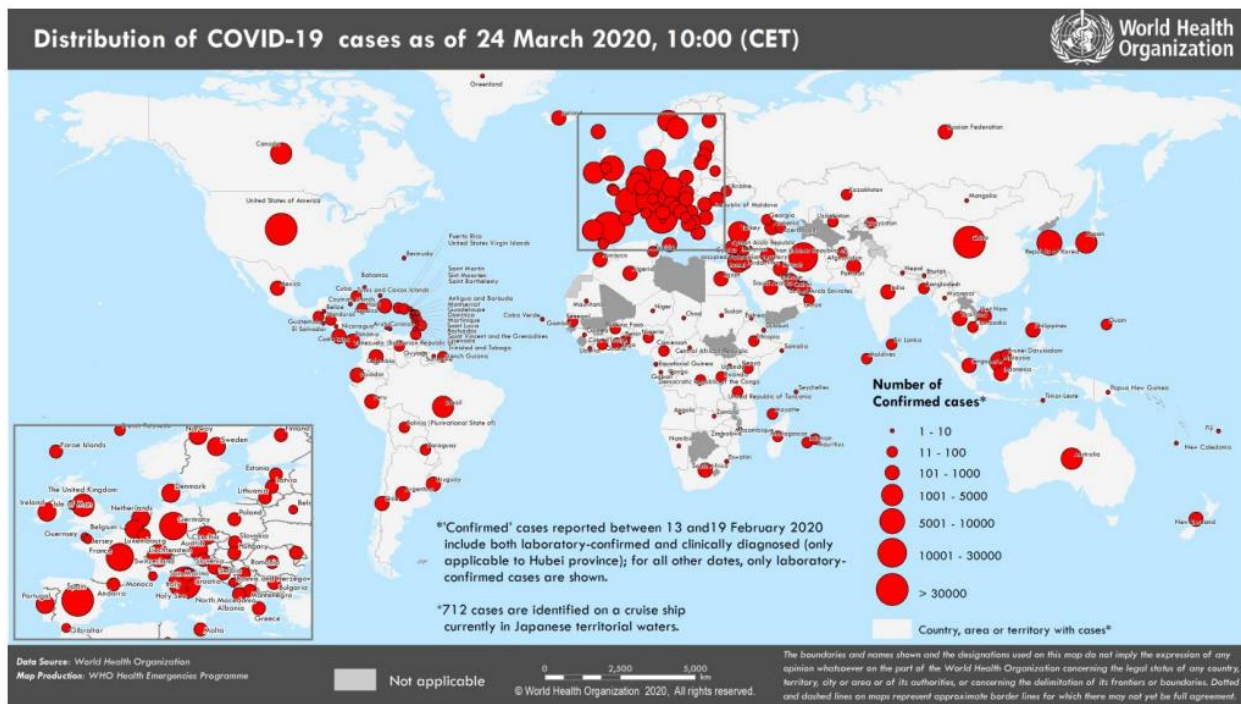


Figure 1. Countries, territories or areas with reported confirmed cases of COVID-19, 24 March 2020.

Below is the surveillance update of travellers from countries/areas/territories as at 00.00hrs 24 March 2020.

Table 2. Number of travellers from affected countries/areas/territories under surveillance



Port of Entry	Arrivals 24/03/20	Travel History	Current on follow up	Discharge no symptoms 24/03/02	Cumulative discharges	Cumulative
KIA	30	30 RSA	405	4	169	570
Chileka	15	15 RSA	408	0	40	448
Mwanza	48	48 RSA	480	0	0	480
Dedza PoE	99	99 RSA	990	0	0	990
Total	192		2279	4	209	2488

NB: The one suspect that was investigated as a contact to a case that was confirmed in Australia a few days after leaving Malawi, tested negative for COVID-19.

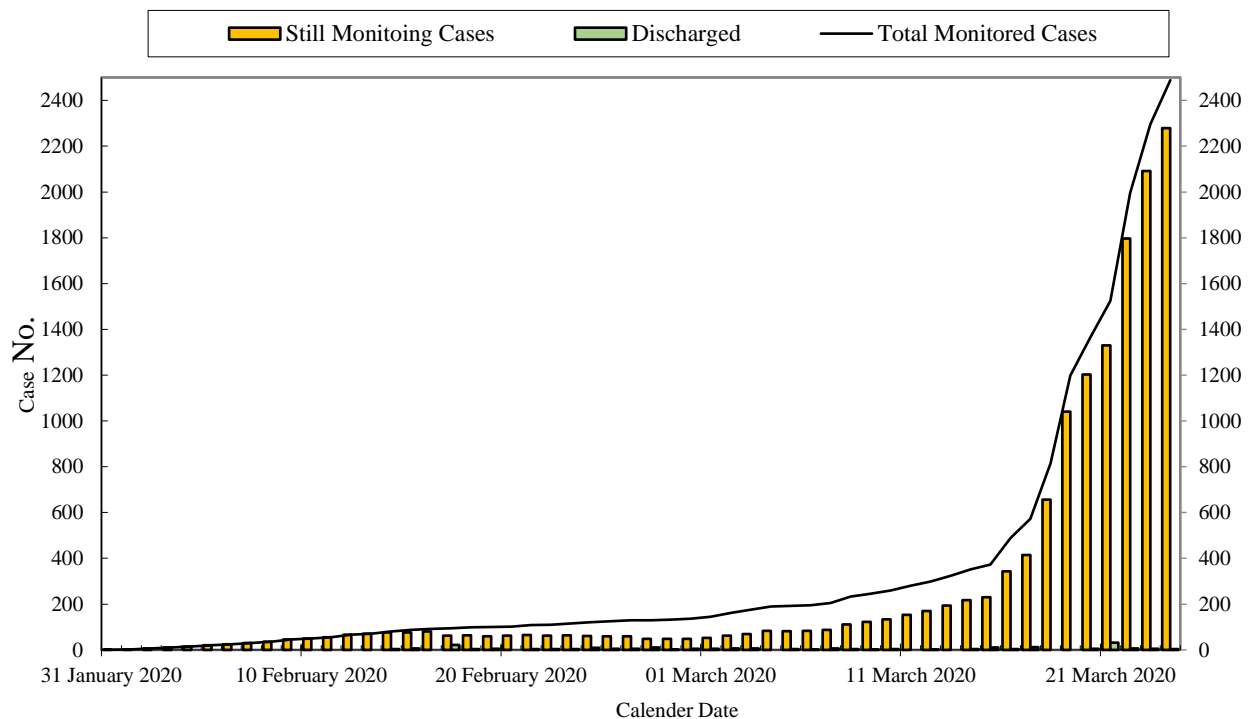


Figure 3: Cumulative people on follow-up for COVID-19 surveillance for Malawi, 24 March 2020

The Ministry of Health and partners continue in its efforts to ensure the citizens are protected from the Coronavirus outbreak and that the country is able to detect and respond to any cases that may arise.



### **Some of the activities Being Conducted**

- Continue screening of travellers in all points of entry
- Providing media updates of current global and local situation
- Radio jingles on COVID-19
- Press release
- Private sector engagement
- Dissemination of information through social media (MoH Facebook page : <https://www.facebook.com/malawimoh> )
- Responding to rumours and misinformation to counteract infodemic
- Continuous media engagement
- Capacity building for health workers
- In-country laboratory confirmatory testing for COVID-19
- Weekly technical committee meetings to update strategies as new knowledge comes to light
- Toll-free call line with Chipatala Cha Pa Fino (number: 54747).

***Prepared by: Epidemiology, Public Health Institute of Malawi (PHIM), available on <http://malawipublichealth.org/>***