

Forum

Raising awareness on climate responsive design in East Africa

27/28.02.2019

Keyspeakers from Africa, Europe, Asia and USA



Why Enabel?

1. Long experience in sustainable construction.
2. Important infrastructure unit.
3. Experienced in linkage between hard and soft component.



Raising awareness on climate responsive design in East Africa

6+1 topics:

Environment / Ecosystem

What is the link between the building and its environment, its ecosystem ?

Creating a comfortable and conducive environment

How can ventilation, temperature, humidity, daylight and acoustics influence a comfortable feeling in the building?

Construction materials

Which are best suited in a certain area or climate? How can materials contribute to the internal climate of a building?

Participatory design

How can a participatory design improve on the climate responsiveness of architecture in East-Africa?

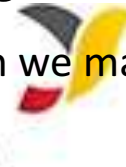
Energy efficient design

How will the project account for its “net” or overall total sum energy impacts?

Cost/Benefits

Who will benefit from the project and for how long? How can we make the project most cost efficient?

Enabel



Main lessons learned



1

You don't need big and complex techniques to make it sustainable





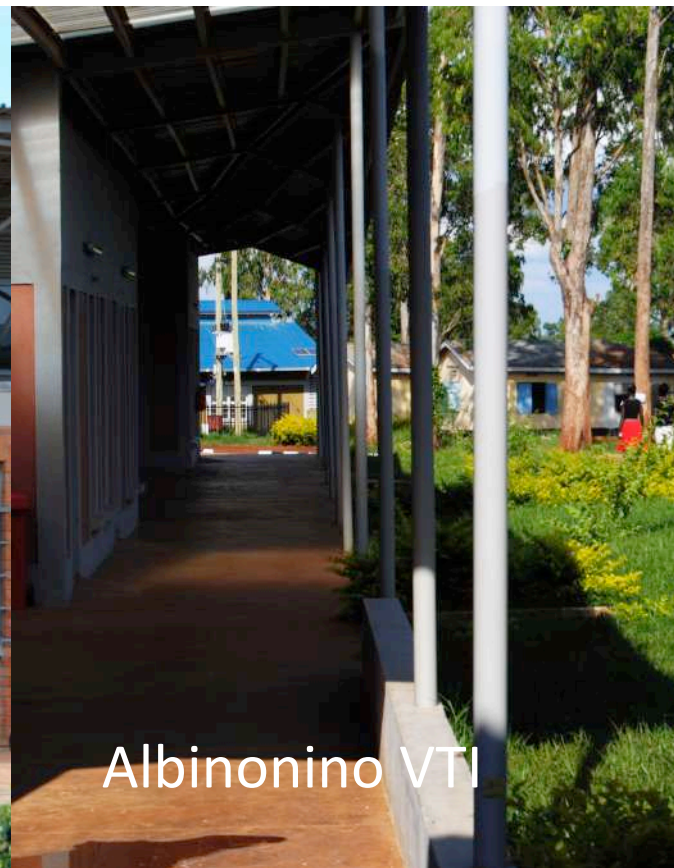
Josefien Vandermeulen



Josefien Vandermeulen



NTC Kaliro



Albinonino VTI



Gando school

2

The use of local materials and innovative techniques



Wall

Non-interlocking
Stabilized Soil Block



Felix Holland



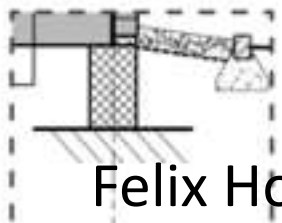
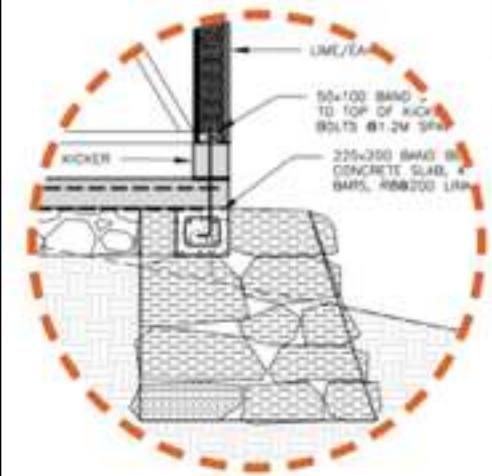
Interlocking Soil
Stabilized Bricks



Agnes Ammeux / Mattias Piani

Foundations

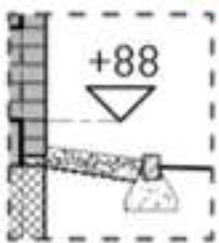
Stone



Felix Holland

Splash Apron

Power-floated Floor



Felix Holland



3

Bottom up approach

Especially in Africa community involvement is an asset...

...then the question is how the role of the architect have to evolve to integrate this bottom up process ?

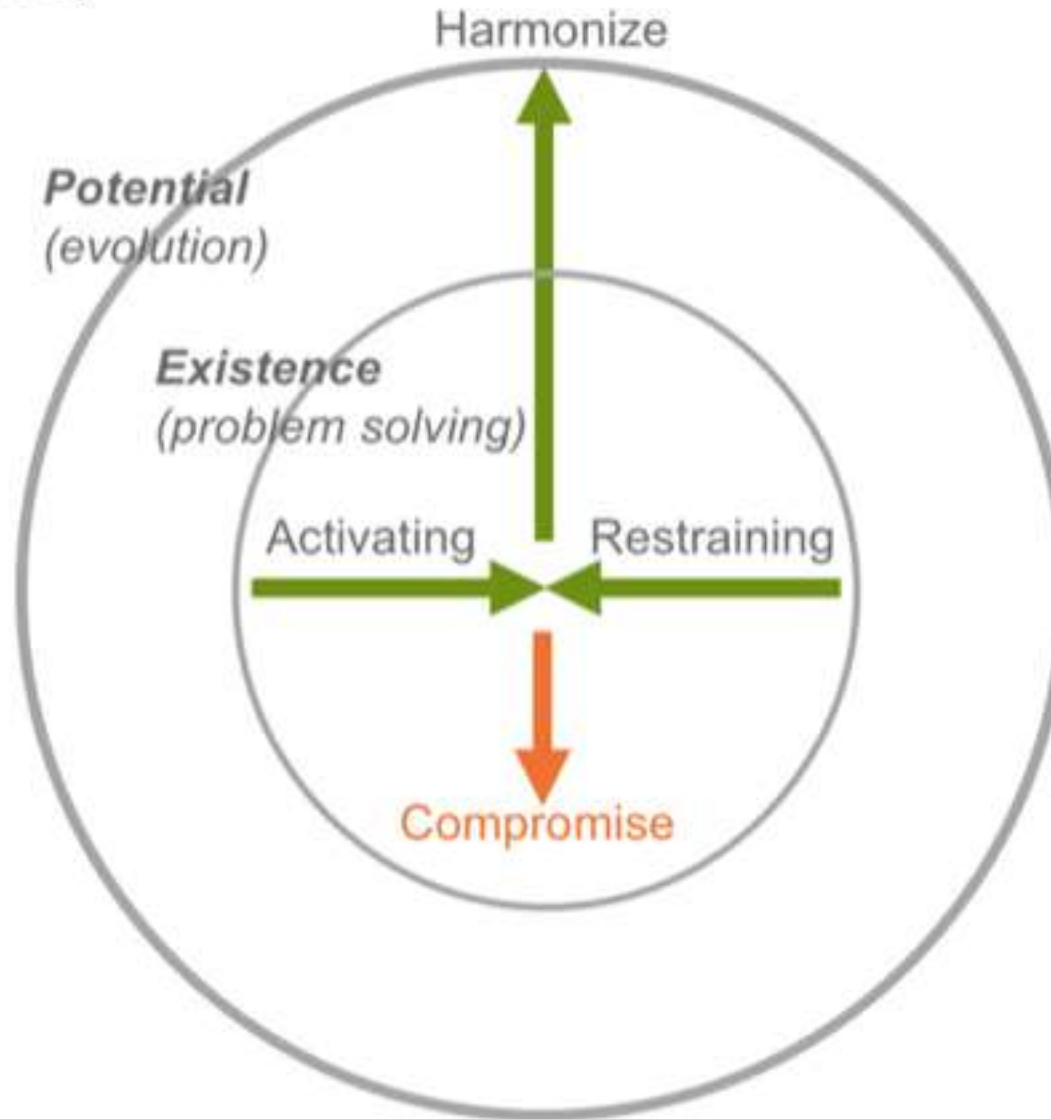




Agnes Ammeux / Mattias Piani

Fragments and Problems vs. Wholes and Potential

No problems in Nature;
only potential



Ben Haggard

...and...

Holistic approach

Soft and hard components working together



Working with Places

Systems

Technical & Living

Elements

Interconnections

Purpose / Function

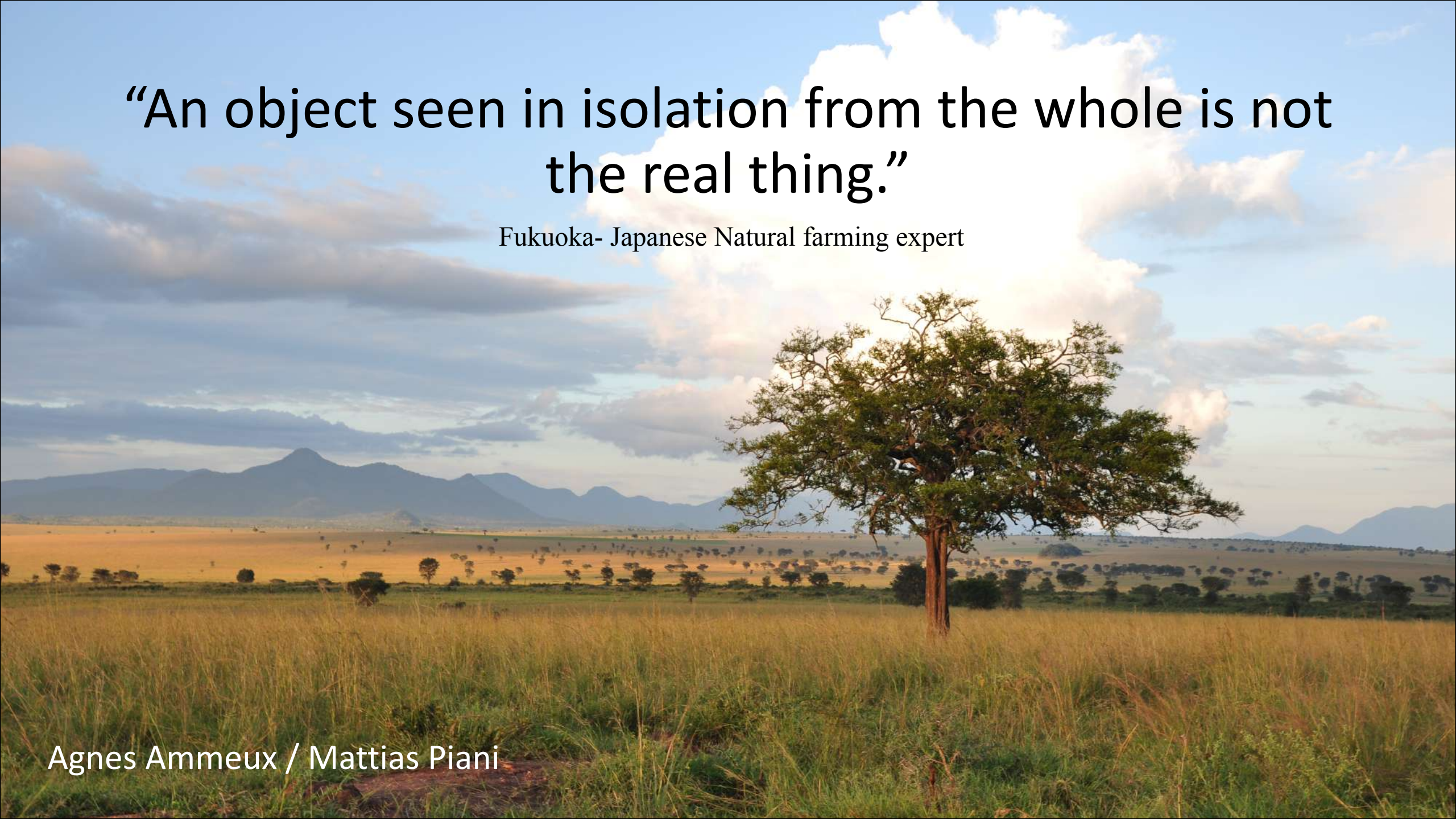


Ben Haggard

“An object seen in isolation from the whole is not
the real thing.”

Fukuoka- Japanese Natural farming expert

Agnes Ammeux / Mattias Piani



Which is next step?

1. An online platform regrouping documents, activities and exchanges
2. A one day fair on the materials and professionals on Climate responsive design and construction

Others suggestions?

