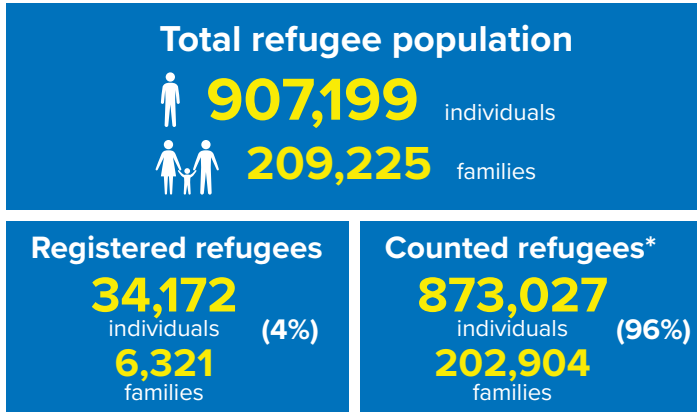
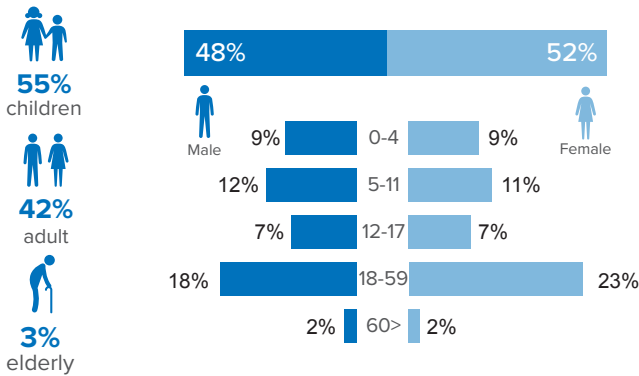


## Refugee population figure

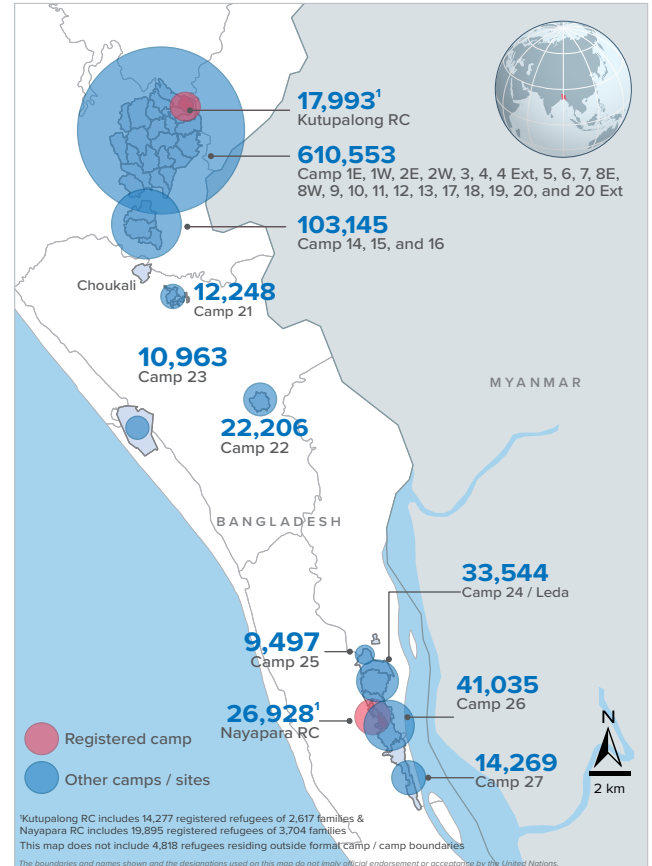


\* Some refugees living in host communities and in certain locations beyond the camp boundaries may not have been counted.

## Demography

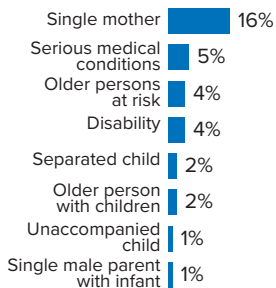


## Refugee population density



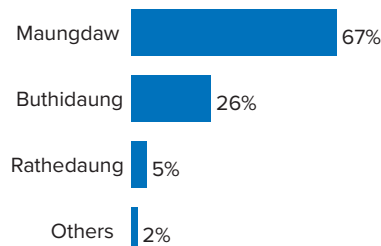
## Specific needs

**31%** of the families have been identified with at least one protection vulnerability\*



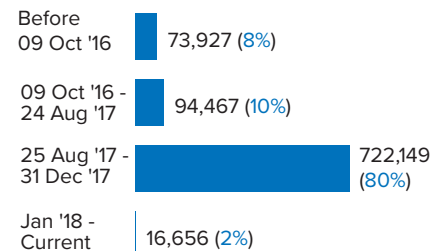
## Place of origin

**67%** of the Rohingya refugees comes from Maungdaw Township



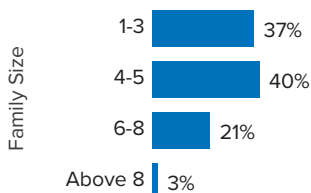
## Period of arrival

**80%** of current population arrived between Aug. and Dec 2017



## Family size breakdown

**40%** of the families have a standard family size of 4-5 persons



## Linking exercise

The Linking Exercise, conducted from December 2017 until February 2018, was a collaborative effort between the Government of Bangladesh and the United Nations High Commissioner for Refugees that aimed to merge the family based Rohingya population data collected through the Family Counting Exercise with attributes of the individual Rohingya population data collected by the Ministry of Home Affairs.

The exercise was conducted with a view to creating a unified dataset with individual data grouped into families which will be used to better protect and assist families.

\*Figures are the percentage of total families with at least one person with a specific need. More than one specific need may be present within one family.

## Age and gender breakdown by camp/site

Camp	Infant female below 1	Infant male below 1	1-4 Children female	1-4 Children male	5-11 Children female	5-11 Children male	12-17 Children female	12-17 Children male	18-59 Adult female	18-59 Adult male	60+ Elderly female	60+ Elderly male	Total Families	Total Individuals
Camp 15	951	900	3,545	3,691	5,302	5,482	3,425	3,605	11,542	9,188	907	905	11,182	49,443
Camp 13	721	772	3,098	3,213	4,519	4,774	2,779	2,859	9,819	7,751	744	686	9,789	41,735
Camp 26	694	616	3,132	3,135	4,748	5,205	2,973	2,775	9,807	6,760	635	555	9,398	41,035
Camp 1W	762	755	2,958	2,972	4,439	4,533	2,689	2,789	9,664	7,769	865	754	9,453	40,949
Camp 1E	676	744	2,823	3,009	4,323	4,537	2,696	2,797	9,445	7,842	816	709	9,299	40,417
Camp 3	701	742	3,025	3,119	4,229	4,454	2,540	2,725	9,436	7,375	703	593	9,204	39,642
Camp 7	710	730	3,014	3,162	4,275	4,477	2,675	2,612	9,198	7,186	724	654	9,357	39,417
Camp 9	625	567	2,800	2,808	3,984	4,053	2,482	2,486	8,562	6,914	712	692	8,672	36,685
Camp 24	506	521	2,278	2,488	4,028	4,147	2,308	2,403	8,003	5,904	543	415	7,761	33,544
Camp 10	628	620	2,596	2,724	3,398	3,746	2,147	2,086	7,791	6,111	598	521	7,650	32,966
Camp 8W	545	518	2,619	2,568	3,427	3,633	2,033	2,145	7,638	6,094	606	534	7,466	32,360
Camp 4	574	627	2,444	2,578	3,578	3,704	2,041	2,053	7,616	5,941	520	404	7,881	32,080
Camp 14	561	586	2,316	2,559	3,396	3,737	2,262	2,246	7,301	5,824	605	524	7,049	31,917
Camp 11	546	577	2,363	2,386	3,378	3,578	2,134	2,189	7,249	5,918	533	495	7,118	31,346
Camp 8E	496	498	2,247	2,326	3,362	3,413	2,306	2,234	7,353	5,890	537	554	7,202	31,216
Camp 2E	556	525	2,308	2,345	3,318	3,603	1,808	1,850	7,221	5,425	516	443	7,236	29,918
Nayapara RC*	86	90	1,549	1,624	2,914	2,994	2,301	2,359	7,142	5,008	447	414	5,705	26,928
Camp 18	470	495	2,195	2,228	2,867	2,982	1,786	1,680	6,374	4,983	353	357	6,533	26,770
Camp 2W	425	430	1,915	2,003	2,903	3,137	1,625	1,612	6,073	4,780	493	390	5,916	25,786
Camp 5	435	473	1,962	2,026	2,778	2,829	1,540	1,622	5,938	4,620	465	423	6,044	25,111
Camp 6	522	464	2,009	2,146	2,713	2,922	1,469	1,548	5,792	4,580	440	390	5,816	24,995
Camp 12	403	386	1,745	1,864	2,538	2,795	1,707	1,638	5,499	4,276	438	379	5,258	23,668
Camp 22	410	381	1,597	1,799	2,548	2,614	1,671	1,667	4,844	3,963	378	334	4,585	22,206
Camp 16	433	404	1,607	1,703	2,351	2,569	1,522	1,434	5,023	4,028	384	327	4,880	21,785
Camp 19	336	324	1,590	1,674	2,243	2,490	1,431	1,465	4,856	3,780	349	286	4,822	20,824
Kutupalong RC*	78	58	1,018	1,166	1,925	2,054	1,469	1,431	4,596	3,685	264	249	3,546	17,993
Camp 17	269	300	1,435	1,426	1,885	1,977	1,033	1,038	4,011	3,072	243	240	4,004	16,929
Camp 27	237	217	1,094	1,148	1,674	1,710	1,030	1,063	3,307	2,384	219	186	3,150	14,269
Camp 21	223	211	903	961	1,348	1,411	761	796	2,957	2,361	182	134	3,008	12,248
Camp 23	181	199	808	845	1,451	1,491	632	650	2,687	1,690	170	159	2,661	10,963
Camp 25	140	158	710	701	1,105	1,189	742	685	2,209	1,578	168	112	2,143	9,497
Camp 20	126	139	574	655	807	873	416	453	1,822	1,349	127	98	1,794	7,439
Camp 4 Extension	105	105	464	525	672	678	317	330	1,415	1,121	82	79	1,426	5,893
Camp 20 Extension	89	75	365	383	461	482	258	246	1,072	863	63	50	1,085	4,407
No camp**	106	88	394	379	539	563	266	302	1,122	918	79	62	1,132	4,818
<b>Total</b>	<b>15,326</b>	<b>15,295</b>	<b>67,500</b>	<b>70,339</b>	<b>99,426</b>	<b>104,836</b>	<b>61,274</b>	<b>61,873</b>	<b>214,384</b>	<b>166,931</b>	<b>15,908</b>	<b>14,107</b>	<b>209,225</b>	<b>907,199</b>

\*Kutupalong RC includes 14,277 registered refugees of 2,617 families & Nayapara RC includes 19,895 registered refugees of 3,704 families

\*\*This represents refugees residing outside formal camp boundaries

## Population figures by period of arrival

Arrival Period	Before 09 Oct 2016		09 Oct 2016 - 24 Aug 2017		25 Aug 2017 - 31 Dec 2017		01 Jan 2018 - Current date		Total Families	Total Individuals
Camp	Total Families	Total Individuals	Total Families	Total Individuals	Total Families	Total Individuals	Total Families	Total Individuals		
Camp 15	11	47	761	3,376	10,400	45,975	10	45	11,182	49,443
Camp 13	12	48	785	3,434	8,922	37,965	70	288	9,789	41,735
Camp 26	72	352	828	3,682	8,061	35,110	437	1,891	9,398	41,035
Camp 1W	25	95	1,042	4,494	8,361	36,274	25	86	9,453	40,949
Camp 1E	40	188	1,647	7,104	7,578	33,006	34	119	9,299	40,417
Camp 3	21	99	949	4,185	8,205	35,235	29	123	9,204	39,642
Camp 7	102	439	1,079	4,670	8,094	33,976	82	332	9,357	39,417
Camp 9	93	373	2,088	8,479	6,466	27,748	25	85	8,672	36,685
Camp 24	2,173	10,526	523	2,210	5,049	20,756	16	52	7,761	33,544
Camp 10	12	53	616	2,633	6,999	30,194	23	86	7,650	32,966
Camp 8W	27	113	639	2,795	6,720	29,145	80	307	7,466	32,360
Camp 4	29	118	336	1,380	7,249	29,468	267	1,114	7,881	32,080
Camp 14	12	44	603	2,795	6,391	28,906	43	172	7,049	31,917
Camp 11	3	11	1,080	4,795	6,019	26,477	16	63	7,118	31,346
Camp 8E	35	143	849	3,714	6,281	27,231	37	128	7,202	31,216
Camp 2E	3,310	14,029	1,688	7,080	2,190	8,656	48	153	7,236	29,918
Nayapara RC*	3,750	20,077	248	968	1,671	5,777	36	106	5,705	26,928
Camp 18	14	56	165	679	6,321	25,913	33	122	6,533	26,770
Camp 2W	1,886	8,644	1,412	6,090	2,565	10,873	53	179	5,916	25,786
Camp 5	30	120	524	2,215	5,469	22,698	21	78	6,044	25,111
Camp 6	57	250	1,127	5,073	4,613	19,610	19	62	5,816	24,995
Camp 12	5	29	264	1,202	4,939	22,238	50	199	5,258	23,668
Camp 22	6	39	207	998	4,358	21,121	14	48	4,585	22,206
Camp 16	5	25	279	1,236	4,574	20,434	22	90	4,880	21,785
Camp 19	4	13	397	1,790	4,227	18,228	194	793	4,822	20,824
Kutupalong RC*	2,839	15,200	155	609	536	2,131	16	53	3,546	17,993
Camp 17	34	151	212	867	2,623	10,954	1,135	4,957	4,004	16,929
Camp 27	29	142	275	1,300	2,698	12,149	148	678	3,150	14,269
Camp 21	12	53	144	626	2,723	11,090	129	479	3,008	12,248
Camp 23	252	1,155	287	1,222	2,106	8,517	16	69	2,661	10,963
Camp 25	17	85	252	1,122	1,870	8,271	4	19	2,143	9,497
Camp 20	59	262	111	489	1,297	5,366	327	1,322	1,794	7,439
Camp 4 Extension	58	226	121	530	1,114	4,574	133	563	1,426	5,893
Camp 20 Extension	66	277	66	292	737	2,999	216	839	1,085	4,407
No camp**	106	445	79	333	711	3,084	236	956	1,132	4,818
<b>Grand Total</b>	<b>15,206</b>	<b>73,927</b>	<b>21,838</b>	<b>94,467</b>	<b>168,137</b>	<b>722,149</b>	<b>4,044</b>	<b>16,656</b>	<b>209,225</b>	<b>907,199</b>

\*Kutupalong RC includes 14,277 registered refugees of 2,617 families & Nayapara RC includes 19,895 registered refugees of 3,704 families

\*\*This represents refugees residing outside formal camp boundaries

## Population figures by specific needs

Camp	Families with separated children	Families with unaccompanied children	Families with a person with disability	Families with older person at risk	Families with older person at risk with children	Families with people with serious medical condition	Single male parent with infants	Single female parent	Families with people with specific needs
Camp 26	169	53	280	357	114	215	81	2,182	3,236
Camp 15	234	60	354	589	198	460	63	1,606	3,212
Camp 1E	173	45	557	460	327	489	57	1,164	2,942
Camp 7	225	28	361	374	243	460	106	1,286	2,827
Nayapara RC	176	41	607	164	50	1,197	35	1,186	2,817
Camp 13	243	79	311	395	208	344	64	1,424	2,803
Camp 1W	166	32	404	448	215	447	66	1,270	2,773
Camp 3	203	61	376	368	289	319	66	1,438	2,695
Camp 24	177	73	299	285	121	256	43	1,637	2,632
Camp 4	245	90	202	301	204	293	101	1,502	2,584
Camp 9	149	73	382	396	260	487	95	1,046	2,538
Camp 10	125	79	381	336	239	505	93	1,036	2,433
Camp 8E	152	69	338	364	239	410	83	1,057	2,317
Camp 2E	160	54	263	253	208	307	53	1,219	2,266
Camp 18	152	62	238	220	167	293	81	1,133	2,078
Camp 11	167	61	263	290	155	230	65	1,058	1,976
Camp 5	159	68	213	297	163	213	61	1,094	1,966
Camp 14	119	45	185	314	138	305	43	968	1,911
Camp 6	165	44	213	242	130	314	42	837	1,843
Camp 2W	109	17	287	240	115	266	59	810	1,748
Camp 8W	95	36	233	266	148	292	79	742	1,686
Kutupalong RC	52	17	344	86	35	772	7	527	1,518
Camp 12	81	33	142	204	103	138	32	768	1,461
Camp 19	122	33	190	219	81	118	46	761	1,417
Camp 16	92	22	167	201	81	159	35	704	1,339
Camp 17	107	22	140	152	82	125	41	704	1,244
Camp 22	69	17	159	156	77	154	16	580	1,120
Camp 27	55	13	99	88	34	63	21	729	1,025
Camp 23	50	12	72	97	43	69	11	752	1,020
Camp 21	66	23	109	95	32	105	35	511	899
Camp 25	38	23	75	83	33	87	18	493	754
Camp 20	26	12	91	68	47	75	19	293	571
Camp 4 Extension	20	13	52	38	34	46	13	179	388
Camp 20 Extension	26	13	45	37	25	41	12	144	309
No camp	19	6	27	40	12	21	8	143	309
<b>Total</b>	<b>4,386</b>	<b>1,429</b>	<b>8,459</b>	<b>8,523</b>	<b>4,650</b>	<b>10,075</b>	<b>1,750</b>	<b>32,983</b>	<b>64,657</b>