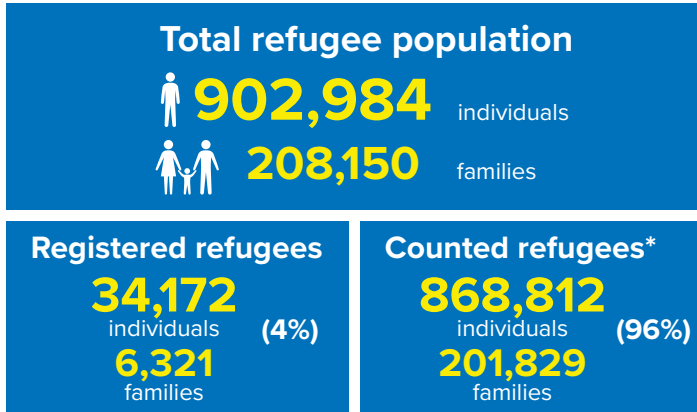
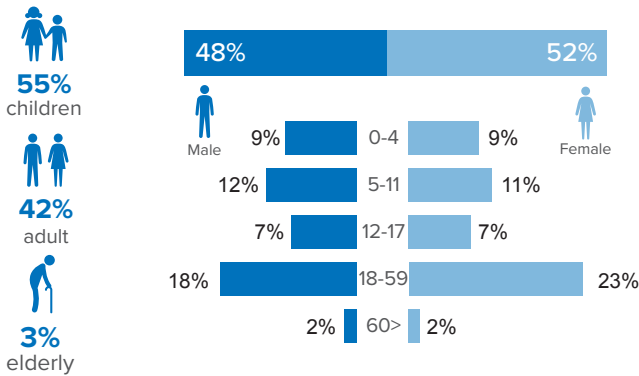


Refugee population figure

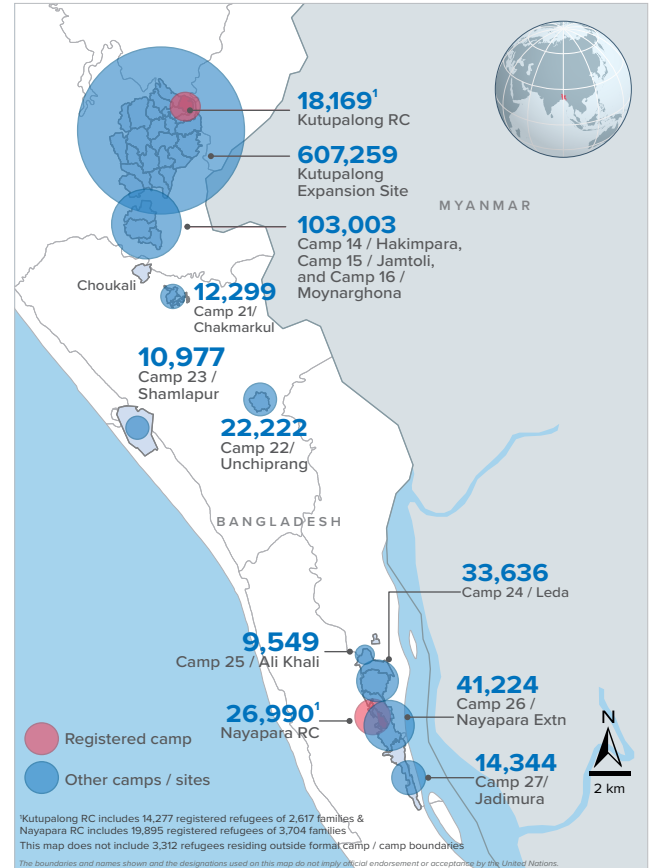


* Some refugees living in host communities and in certain locations beyond the camp boundaries may not have been counted.

Demography

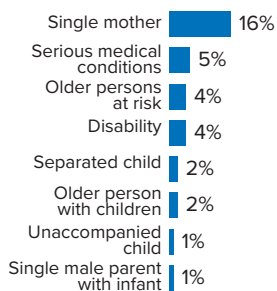


Refugee population density



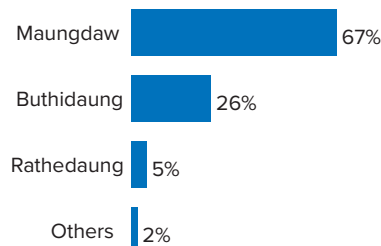
Specific needs

31% of the families have been identified with at least one protection vulnerability*



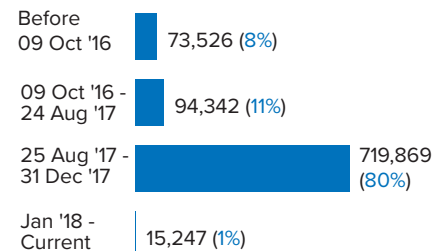
Place of origin

67% of the Rohingya refugees comes from Maungdaw Township



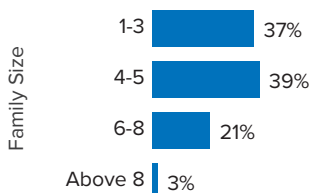
Period of arrival

80% of current population arrived between Aug. and Dec 2017



Family size breakdown

39% of the families have a standard family size of 4-5 persons



Linking exercise

The Linking Exercise, conducted from December 2017 until February 2018, was a collaborative effort between the Government of Bangladesh and the United Nations High Commissioner for Refugees that aimed to merge the family based Rohingya population data collected through the Family Counting Exercise with attributes of the individual Rohingya population data collected by the Ministry of Home Affairs.

The exercise was conducted with a view to creating a unified dataset with individual data grouped into families which will be used to better protect and assist families.

*Figures are the percentage of total families with at least one person with a specific need. More than one specific need may be present within one family.

Age and gender breakdown by camp/site

Camp	Infant female below 1	Infant male below 1	1-4 Children female	1-4 Children male	5-11 Children female	5-11 Children male	12-17 Children female	12-17 Children male	18-59 Adult female	18-59 Adult male	60+ Elderly female	60+ Elderly male	Total Families	Total Individuals
Camp 15	948	899	3,545	3,693	5,304	5,478	3,424	3,610	11,532	9,192	908	905	11,174	49,438
Camp 13	721	770	3,100	3,210	4,518	4,785	2,782	2,861	9,815	7,759	744	689	9,789	41,754
Camp 26	697	619	3,143	3,155	4,770	5,232	2,982	2,783	9,851	6,796	638	558	9,442	41,224
Camp 1W	755	749	2,931	2,936	4,403	4,465	2,698	2,778	9,584	7,706	857	753	9,370	40,615
Camp 1E	660	730	2,806	2,971	4,269	4,508	2,646	2,765	9,343	7,770	797	697	9,205	39,962
Camp 3	683	727	2,991	3,097	4,148	4,385	2,479	2,687	9,278	7,257	693	586	9,060	39,011
Camp 7	704	718	2,988	3,128	4,210	4,429	2,628	2,567	9,096	7,142	720	650	9,268	38,980
Camp 9	628	567	2,803	2,805	3,997	4,060	2,491	2,483	8,574	6,928	713	693	8,678	36,742
Camp 24	508	522	2,285	2,497	4,038	4,157	2,314	2,410	8,024	5,916	545	420	7,780	33,636
Camp 10	628	619	2,577	2,711	3,392	3,746	2,144	2,081	7,772	6,094	597	521	7,626	32,882
Camp 8W	559	523	2,655	2,595	3,466	3,686	2,068	2,168	7,730	6,175	613	539	7,557	32,777
Camp 14	558	584	2,312	2,556	3,388	3,733	2,258	2,246	7,292	5,825	604	524	7,040	31,880
Camp 4	579	618	2,393	2,546	3,538	3,692	2,052	2,030	7,534	5,879	521	392	7,813	31,774
Camp 11	545	579	2,362	2,392	3,378	3,582	2,136	2,196	7,256	5,928	538	497	7,127	31,389
Camp 8E	501	501	2,260	2,341	3,378	3,436	2,315	2,245	7,373	5,912	544	556	7,230	31,362
Camp 2E	551	527	2,264	2,314	3,292	3,534	1,789	1,848	7,147	5,367	513	442	7,135	29,588
Nayapara RC*	86	90	1,556	1,628	2,921	3,005	2,303	2,363	7,160	5,017	447	414	5,721	26,990
Camp 18	465	494	2,189	2,225	2,866	2,980	1,790	1,681	6,367	4,977	354	359	6,528	26,747
Camp 2W	417	421	1,897	1,991	2,880	3,137	1,584	1,596	6,016	4,733	488	376	5,857	25,536
Camp 5	442	471	1,960	2,046	2,790	2,825	1,550	1,641	5,959	4,642	462	418	6,059	25,206
Camp 6	512	462	1,988	2,093	2,689	2,858	1,449	1,541	5,725	4,498	430	389	5,731	24,634
Camp 12	401	385	1,737	1,856	2,533	2,797	1,696	1,642	5,478	4,252	438	382	5,233	23,597
Camp 22	411	381	1,596	1,798	2,550	2,618	1,675	1,670	4,846	3,965	378	334	4,587	22,222
Camp 16	433	403	1,597	1,684	2,340	2,556	1,522	1,434	4,995	4,009	387	325	4,853	21,685
Camp 19	338	321	1,592	1,674	2,244	2,493	1,428	1,465	4,845	3,774	349	288	4,814	20,811
Kutupalong RC*	79	65	1,028	1,179	1,945	2,075	1,483	1,438	4,632	3,723	269	253	3,583	18,169
Camp 17	254	296	1,382	1,357	1,816	1,893	1,014	996	3,845	2,950	240	232	3,846	16,275
Camp 27	242	217	1,101	1,156	1,681	1,718	1,032	1,068	3,327	2,396	219	187	3,168	14,344
Camp 21	228	212	908	967	1,347	1,411	763	800	2,971	2,373	184	135	3,020	12,299
Camp 23	181	199	808	845	1,454	1,492	633	652	2,691	1,692	170	160	2,665	10,977
Camp 25	141	159	712	706	1,114	1,194	746	690	2,221	1,585	168	113	2,154	9,549
Camp 20	126	139	574	656	803	865	417	451	1,822	1,343	126	99	1,794	7,421
Camp 4 Extension	105	107	465	513	648	678	329	320	1,413	1,113	82	82	1,413	5,855
Camp 20 Extension	89	75	359	378	453	469	255	247	1,056	847	63	50	1,067	4,341
No camp**	63	49	243	265	378	389	217	238	767	602	54	47	763	3,312
Total	15,238	15,198	67,107	69,964	98,941	104,361	61,092	61,691	213,337	166,137	15,853	14,065	208,150	902,984

*Kutupalong RC includes 14,277 registered refugees of 2,617 families & Nayapara RC includes 19,895 registered refugees of 3,704 families

**This represents refugees residing outside formal camp boundaries

Population figures by period of arrival

Arrival Period	Before 09 Oct 2016		09 Oct 2016 - 24 Aug 2017		25 Aug 2017 - 31 Dec 2017		01 Jan 2018 - Current date		Total Families	Total Individuals
Camp	Total Families	Total Individuals	Total Families	Total Individuals	Total Families	Total Individuals	Total Families	Total Individuals		
Camp 15	11	47	764	3,392	10,391	45,965	8	34	11,174	49,438
Camp 13	12	48	788	3,446	8,922	37,985	67	275	9,789	41,754
Camp 26	72	352	829	3,686	8,104	35,295	437	1,891	9,442	41,224
Camp 1W	25	97	1,049	4,524	8,272	35,915	24	79	9,370	40,615
Camp 1E	39	178	1,629	7,006	7,504	32,657	33	121	9,205	39,962
Camp 3	23	105	951	4,164	8,053	34,610	33	132	9,060	39,011
Camp 7	127	558	1,078	4,662	7,997	33,487	66	273	9,268	38,980
Camp 9	93	373	2,096	8,514	6,467	27,782	22	73	8,678	36,742
Camp 24	2,178	10,551	524	2,213	5,062	20,820	16	52	7,780	33,636
Camp 10	12	53	615	2,628	6,978	30,120	21	81	7,626	32,882
Camp 8W	39	166	657	2,875	6,784	29,441	77	295	7,557	32,777
Camp 14	12	44	603	2,795	6,386	28,884	39	157	7,040	31,880
Camp 4	40	181	326	1,343	7,191	29,175	256	1,075	7,813	31,774
Camp 11	3	11	1,084	4,811	6,026	26,510	14	57	7,127	31,389
Camp 8E	34	142	852	3,728	6,320	27,396	24	96	7,230	31,362
Camp 2E	3,244	13,727	1,694	7,153	2,155	8,571	42	137	7,135	29,588
Nayapara RC*	3,750	20,077	250	971	1,685	5,836	36	106	5,721	26,990
Camp 18	12	48	166	686	6,324	25,917	26	96	6,528	26,747
Camp 2W	1,837	8,422	1,424	6,138	2,546	10,806	50	170	5,857	25,536
Camp 5	35	139	530	2,247	5,469	22,724	25	96	6,059	25,206
Camp 6	62	276	1,071	4,834	4,583	19,470	15	54	5,731	24,634
Camp 12	5	29	264	1,202	4,922	22,192	42	174	5,233	23,597
Camp 22	6	39	208	1,005	4,360	21,132	13	46	4,587	22,222
Camp 16	5	25	280	1,241	4,558	20,378	10	41	4,853	21,685
Camp 19	4	13	397	1,790	4,225	18,236	188	772	4,814	20,811
Kutupalong RC*	2,840	15,208	159	627	567	2,282	17	52	3,583	18,169
Camp 17	33	141	190	777	2,497	10,436	1,126	4,921	3,846	16,275
Camp 27	29	142	279	1,315	2,712	12,209	148	678	3,168	14,344
Camp 21	12	53	144	626	2,737	11,156	127	464	3,020	12,299
Camp 23	252	1,155	287	1,222	2,110	8,531	16	69	2,665	10,977
Camp 25	17	85	253	1,125	1,880	8,320	4	19	2,154	9,549
Camp 20	57	253	110	481	1,300	5,369	327	1,318	1,794	7,421
Camp 4 Extension	67	274	124	547	1,112	4,582	110	452	1,413	5,855
Camp 20 Extension	66	282	66	292	729	2,974	206	793	1,067	4,341
No camp**	49	232	65	276	626	2,706	23	98	763	3,312
Grand Total	15,102	73,526	21,806	94,342	167,554	719,869	3,688	15,247	208,150	902,984

*Kutupalong RC includes 14,277 registered refugees of 2,617 families & Nayapara RC includes 19,895 registered refugees of 3,704 families

**This represents refugees residing outside formal camp boundaries

Creation date: 30 November 2018 Sources: UNHCR Feedback: bgdcoim@unhcr.org

Population figures by specific needs

Camp	Families with separated children	Families with unaccompanied children	Families with a person with disability	Families with older person at risk	Families with older person at risk with children	Families with people with serious medical condition	Single male parents with infants	Single female parent	Families with people with specific needs
Camp 26	170	54	281	358	114	215	81	2,191	3,247
Camp 15	236	60	354	592	199	460	63	1,607	3,210
Camp 1E	171	44	551	457	324	485	56	1,161	2,926
Nayapara RC	177	41	607	164	50	1,197	35	1,191	2,823
Camp 13	243	79	311	396	209	344	64	1,426	2,803
Camp 7	223	29	354	365	250	457	106	1,277	2,795
Camp 1W	164	32	395	447	216	451	66	1,257	2,753
Camp 3	194	59	374	366	286	317	65	1,420	2,656
Camp 24	177	73	301	287	121	257	43	1,640	2,637
Camp 4	245	90	197	297	201	280	100	1,489	2,560
Camp 9	149	73	384	397	262	489	95	1,051	2,541
Camp 10	126	79	383	338	242	509	93	1,040	2,428
Camp 8E	152	69	339	367	241	411	83	1,064	2,323
Camp 2E	161	52	268	250	201	306	52	1,196	2,224
Camp 18	152	62	238	222	167	294	81	1,141	2,083
Camp 11	168	61	266	293	157	230	66	1,065	1,978
Camp 5	163	71	214	291	165	214	59	1,098	1,972
Camp 14	119	46	185	314	138	305	43	971	1,908
Camp 6	162	43	221	242	126	324	39	822	1,823
Camp 2W	113	17	280	237	115	262	62	827	1,733
Camp 8W	95	36	239	273	151	294	80	752	1,707
Kutupalong RC	53	17	343	89	34	773	10	540	1,535
Camp 12	81	34	143	205	103	139	32	773	1,454
Camp 19	122	33	191	220	81	118	46	762	1,415
Camp 16	92	22	168	202	81	159	35	704	1,330
Camp 17	107	20	138	147	79	120	38	685	1,195
Camp 22	69	17	159	156	77	154	16	582	1,120
Camp 27	55	13	100	88	34	63	21	733	1,029
Camp 23	50	12	73	97	43	69	11	753	1,021
Camp 21	66	23	110	96	32	106	35	513	901
Camp 25	38	23	75	83	33	87	18	495	756
Camp 20	26	12	92	68	47	75	20	296	574
Camp 4 Extension	20	14	54	41	34	48	13	182	390
Camp 20 Extension	26	13	44	37	25	41	12	143	302
No camp	20	6	26	41	12	22	11	136	242
Total	4,385	1,429	8,458	8,523	4,650	10,075	1,750	32,983	64,394