



USAID
FROM THE AMERICAN PEOPLE

The DHS Program Demographic and Health surveys

A Project Funded by
The United States Agency for
International Development and
Implemented by ICF



What is The DHS Program?

A project that provides, at the global level,
assistance to developing countries in the areas of

Collection and use of data

to monitor and evaluate population, health, and nutrition programs



Specific DHS objectives

- **Collect high-quality data** for policy formulation, program planning, and monitoring and evaluation
- Foster and reinforce **host-country ownership** of data collection, analysis, presentation, and use
- Increase the **capacity of host-country partners** to collect and use data for policy and program purposes

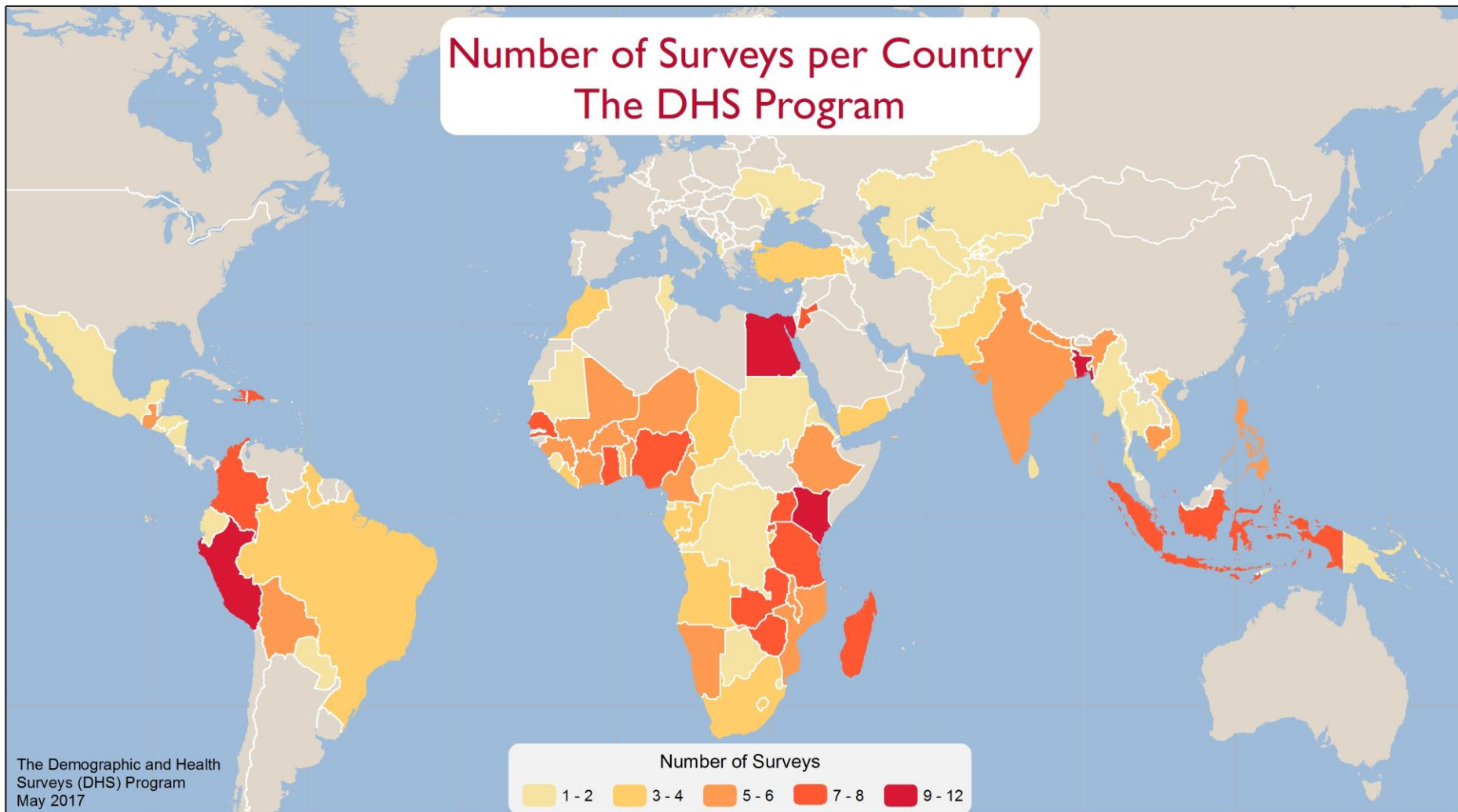
History

The DHS started in 1984:

- **DHS-I** (DHS-1, 1984–1989)
- **DHS-II** (DHS-2, 1989–1993)
- **DHS-III** (DHS-3, 1992–1997)
- **MEASURE DHS+**
(DHS-4, 1997–2003)
- **MEASURE DHS**
(DHS-5, 2003–2008)
- **MEASURE DHS Phase III**
(DHS-6, 2008–2014)
- **The DHS Program**
(DHS-7, 2013–2018)



Number of Surveys per Country The DHS Program



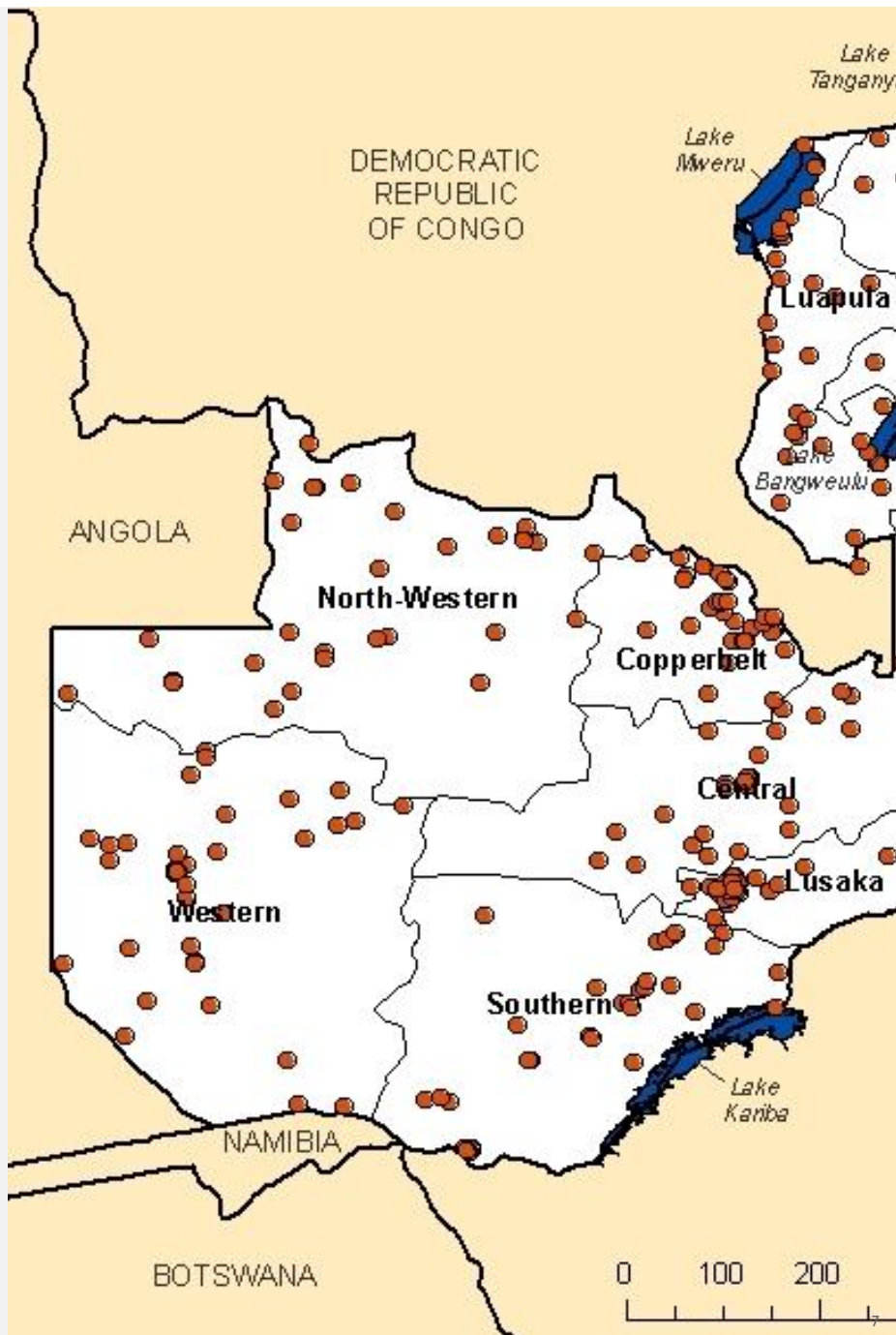
Basics of the DHS

- Cross-sectional, nationally representative sample of households
 - Women and men interviewed in sample households
 - Standard sample size: 3,000–100,000+ households (India is exception)
- Standardized sample design, questionnaires, and implementation procedures
 - Key indicators measured with the same approach over time

DHS Sample

The DHS sample is typically representative at

- The national level
- For urban and rural areas
- The regional level (sometimes groups of regions)
- Some surveys are representative at the state/provincial, or district level.





DHS Core Questionnaires

‘Core’ questionnaires

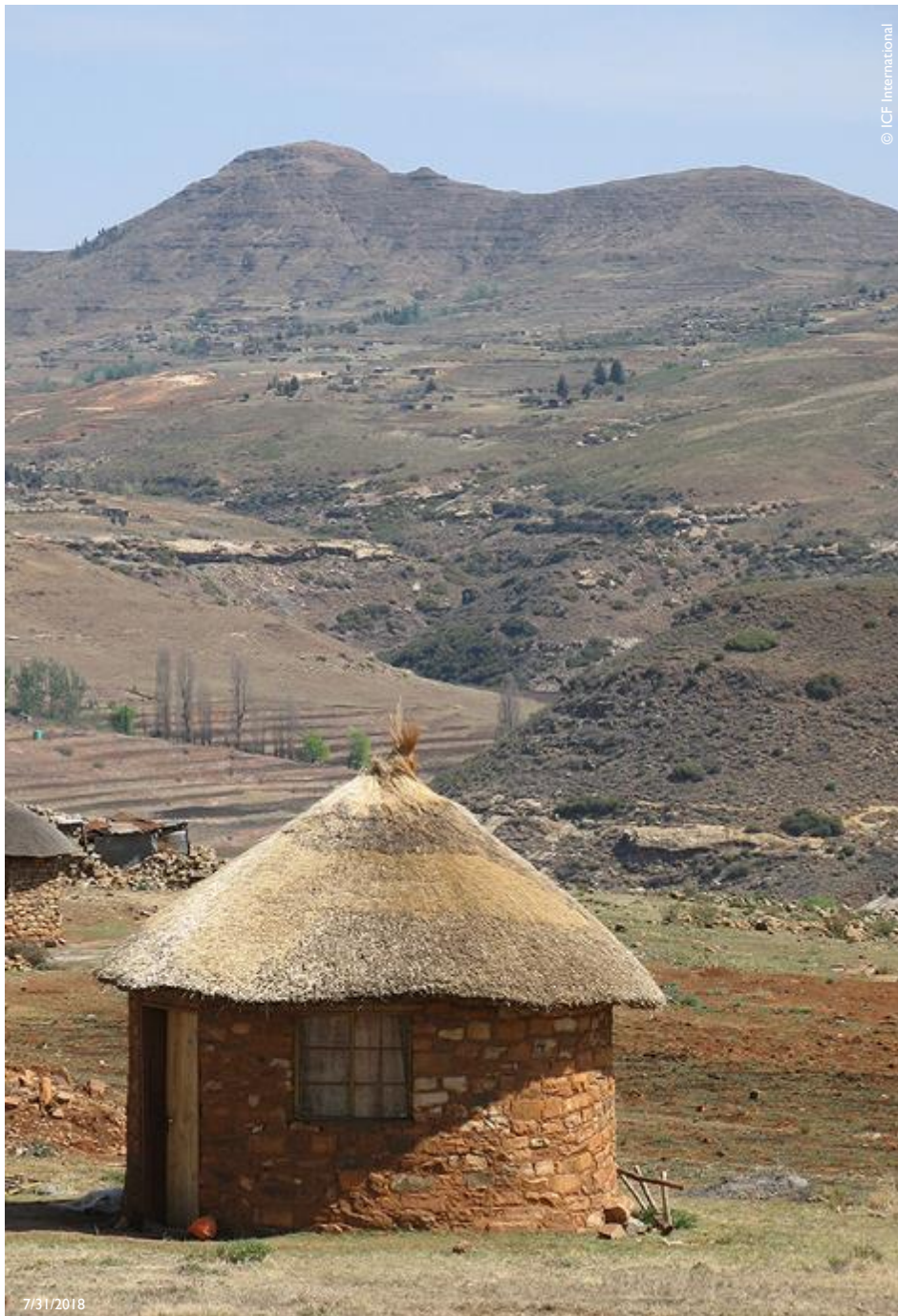
- Core set of questions in each type of questionnaire implemented in every country
- Revised and updated every 5 years
- Provide trends in key indicators
- Allow cross-country comparisons
- Country needs met through country-specific questions

Types of DHS Questionnaires

Standard DHS surveys generally include a:

- Household questionnaire
- Woman's questionnaire
- Man's questionnaire
- Biomarker questionnaire
- Fieldworker questionnaire





Measurement of Poverty

In collaboration with the World Bank, The DHS Program developed a wealth index that uses household asset information from DHS surveys to calculate the relative wealth of households. The wealth index allows for an analysis of the effect of wealth on health.

DHS Questionnaire Modules

Additional Modules

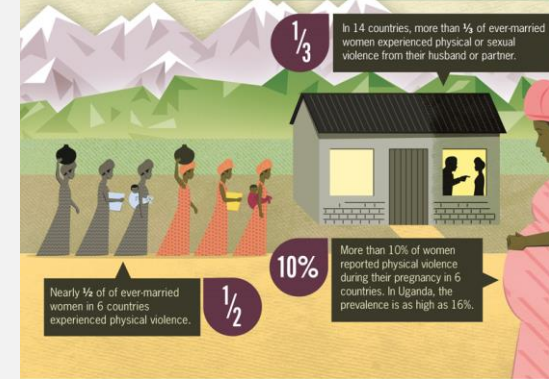
- Domestic Violence
- Female Genital Cutting
- Adult and Maternal Mortality
- Fistula
- Out-of-pocket Health Expenditures
- And more

VIOLENCE IN WOMEN'S LIVES

Violence may be perpetrated against any individual, but across the world, women and girls are the populations most at risk and most severely impacted. Violence in women's lives impacts the health of women and their children; it is a violation of human rights and a barrier to economic development. DHS collected data on aspects of violence in the lives of women age 15-49 in 34 countries during the years 2000-2012.

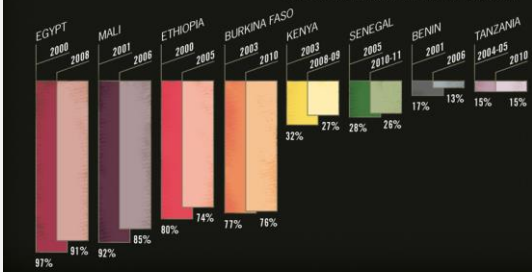
Intimate Partner Violence

In every country, at least 10% of ever-married women experienced physical or sexual violence. In the Democratic Republic of the Congo, the prevalence is as high as 64%.



Female Genital Cutting

Female genital cutting continues to be a problem for many women in Africa. Prevalence of FGC among women age 15-49 has changed little in the last several years.



Seeking Help

In 17 countries, more than 1/3 of women who experienced violence reported seeking help.

Higher percentages of women report seeking help after violence in Sub-Saharan African countries than other regions.



DHS Strengthens Capacity Through:

- Close collaboration with implementing agencies and partners throughout survey design and implementation for on-the-job skills transfer
- Workshops on data analysis, data processing, report writing, data use for decision making, and more
- Distance learning and online tools



Online Capacity Strengthening Tools

- E-Learning courses
www.globalhealthlearning.org
 - DHS Data Use
 - Social Media
 - Data Visualization
- Journalists' Guide and training course to better understand and use DHS data in health and population reporting
- YouTube tutorial videos on reading tables, opening datasets, and more



Youtube.com/dhsprogram

- Key Findings
- Topical interviews
- Tutorials on use of datasets, sampling and weighting, key indicators, and much more



Key Findings from the 2014-15
Tanzania Service Provision



DHS Key Findings



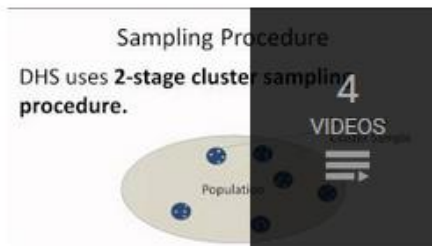
DHS in the News



Using DHS Datasets for Analysis



DHS Tutorials



DHS Sampling & Weighting
Tutorials



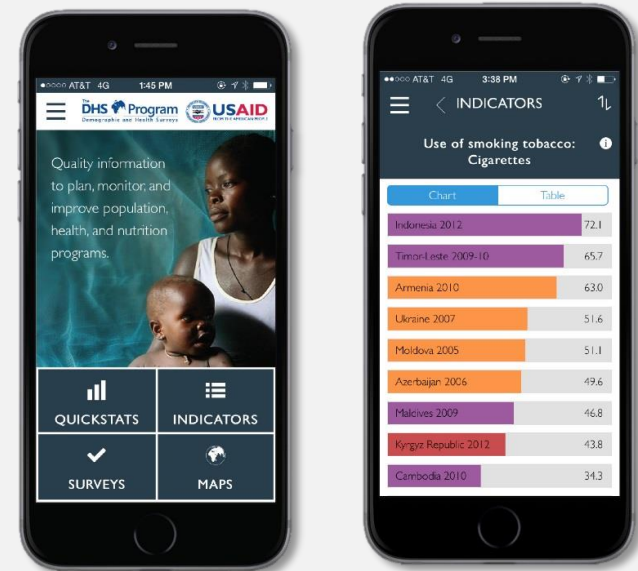
Malaria



Celebrating 30 Years of The DHS
Program

Digital Dissemination

The DHS mobile app: Put DHS data at your fingertips!



Make your own charts, graphs, and data tables at STATcompiler.com



Social Media



www.facebook.com/DHSProgram



Twitter: @DHSProgram



LinkedIn

<http://www.linkedin.com/company/dhs-program>



www.youtube.com/DHSProgram

Blog.dhsprogram.com

