

A guide to UNHCR resources

Mediterranean arrivals:

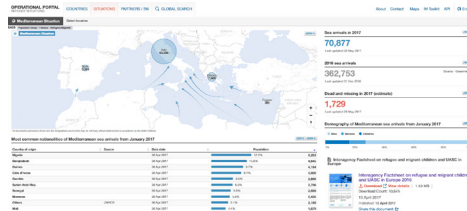
Operational Data Portal for Europe

<http://data2.unhcr.org/en/situations/mediterranean>

Country pages:

Greece: <https://goo.gl/anJl7w>

Italy: <https://goo.gl/vA8FJ3>



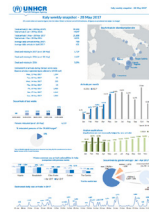
Key Data for Europe (Jan-Mar 2017)

Nationalities, Age and Gender, Asylum statistics

(applications, decisions), Resettlement

<https://goo.gl/tDjZ1Z> (english)

<https://goo.gl/rmMX4b> (french)

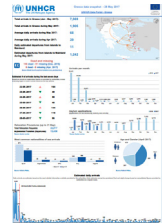


Italy - Greece Weekly Snapshot

Nationalities, Age and Gender,

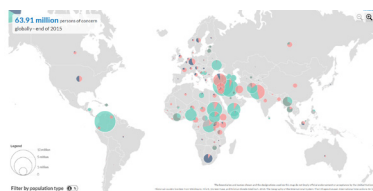
Asylum applications

<https://goo.gl/eNx8I8>



Data on forced displacement:

UNHCR Population Statistics Database



<http://popstats.unhcr.org>

Global Trends Report



Look out for the new Global Trends Report to be released on **June 20th**, World Refugee Day

<https://goo.gl/hNFvR>

Key documents and links:

Unaccompanied and Separated Children (UASC)



Interagency Factsheet on refugee and migrant children and UASC in Europe 2016.

<https://goo.gl/ltv6HI>

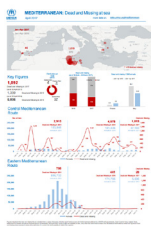
Desperate Journeys



Refugees and migrants entering and crossing Europe via the Mediterranean and Western Balkans routes.

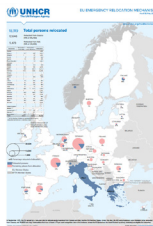
<https://goo.gl/IWHJx9>

Dead and Missing at sea



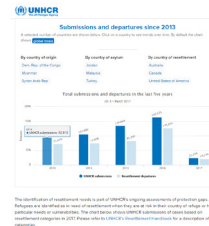
<https://goo.gl/i7aaXM>

EU Relocation Mechanism



<https://goo.gl/R4oVNR>

Resettlement Data



<https://goo.gl/zF9HKO>

UNHCR Activities and updates:

Europe Monthly Report



<https://goo.gl/qkA9hv>

Funding

RMRP Quarterly Update (Jan-Mar 2017)



<https://goo.gl/ceRqei>

Country Reports



<https://goo.gl/p3srB3>

Language:

Refugee or migrant?

UNHCR viewpoint: 'Refugee' or 'migrant' – Which is right?
The two terms have distinct and different meanings, and confusing them leads to problems for both populations.



<https://goo.gl/Zd3qxM>

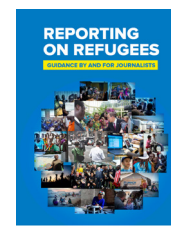
Carta di Roma

(Guidelines in EN/IT/GR)



www.cartadiroma.org

Reporting on refugees



<https://goo.gl/ZmjePZ>

Need more information? **UNHCR** has public information officers in **33** offices in Europe.

Contact details here <https://goo.gl/OhHmJf>

UNHCR

P.O. Box 2500

1211 Geneva 2

www.unhcr.org

[@Refugees](https://twitter.com/Refugees) [#WithRefugees](https://facebook.com/WithRefugees)