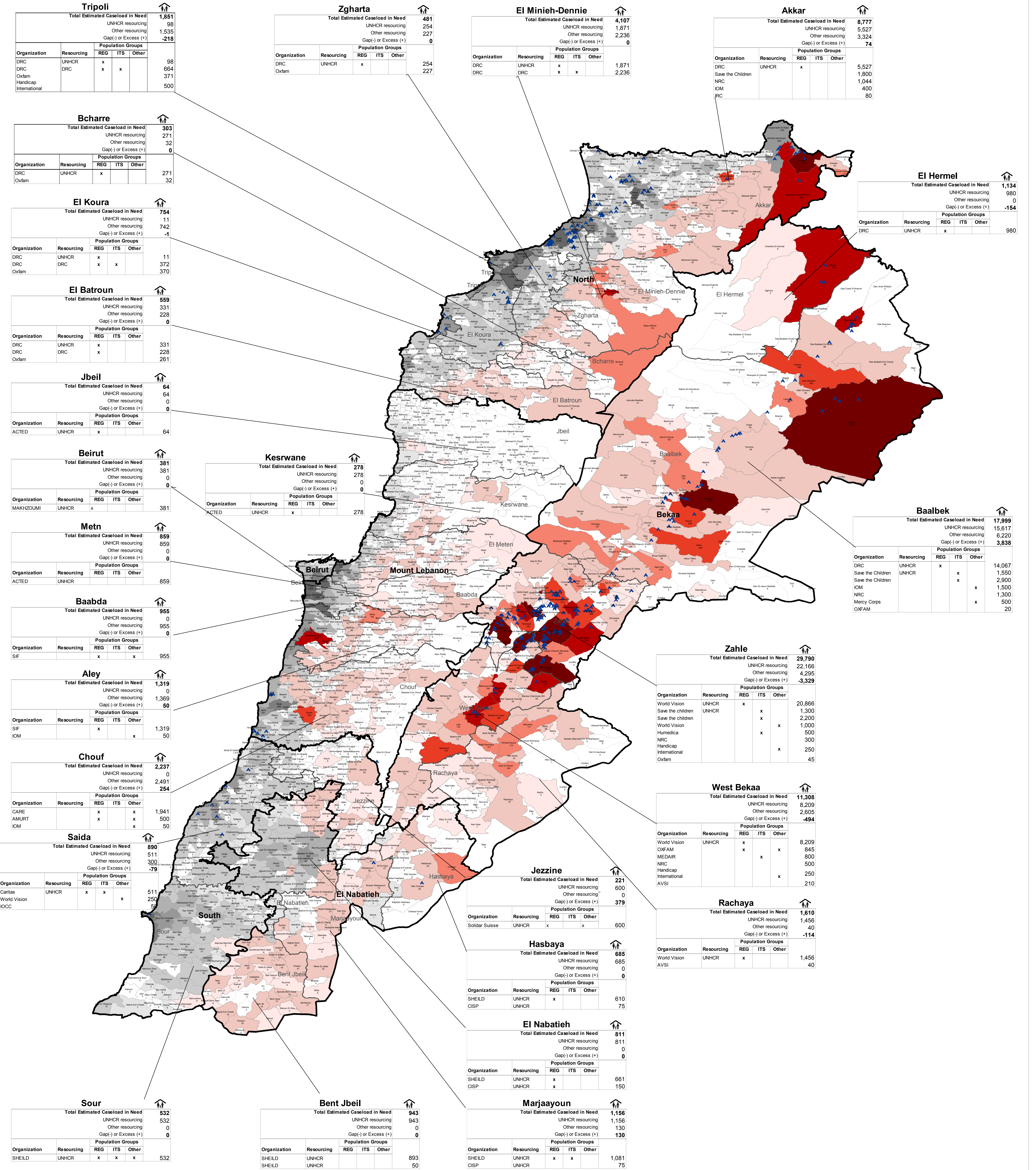


SYRIA REFUGEE RESPONSE

LEBANON Winterization Partner Coordination Map

11 October 2013



The boundaries, names, and designations used on this map do not imply official endorsement of the United Nations or UNHCR. All data used were the best available at the time of map production.

For more information on winterization targeting and coordination, contact: Charles Higgins at higgins@unhcr.org

GIS and Mapping by UNHCR Lebanon:
Wali Ahedi (Ahedi@unhcr.org)
Jad Ghosn (Ghosn@unhcr.org)

UNHCR
The UN Refugee Agency

This map shows the estimated caseload for winterization applying the targeting methodology of:
- Vulnerable registered refugee households living above 500 meters
- Residents of Informal Tent Settlements (ITS) irrespective of altitude, registration status or vulnerability
- Persons with Specific Needs (calculated at 10% of the refugee population at end August 2013)

Notes:
- Figures written in the cadastral zones on the map show the total registered vulnerable refugee households as at end August 2013
- Figures in the tables show the projected total estimated caseload (households) in need of winterization in each district as at end December 2013
- Agencies mentioned and resourcing levels are as they have been notified to UNHCR as at 5 September 2013
- For agencies wishing to print out this entire map, please print in color A0 size
- All figures are in number of households

