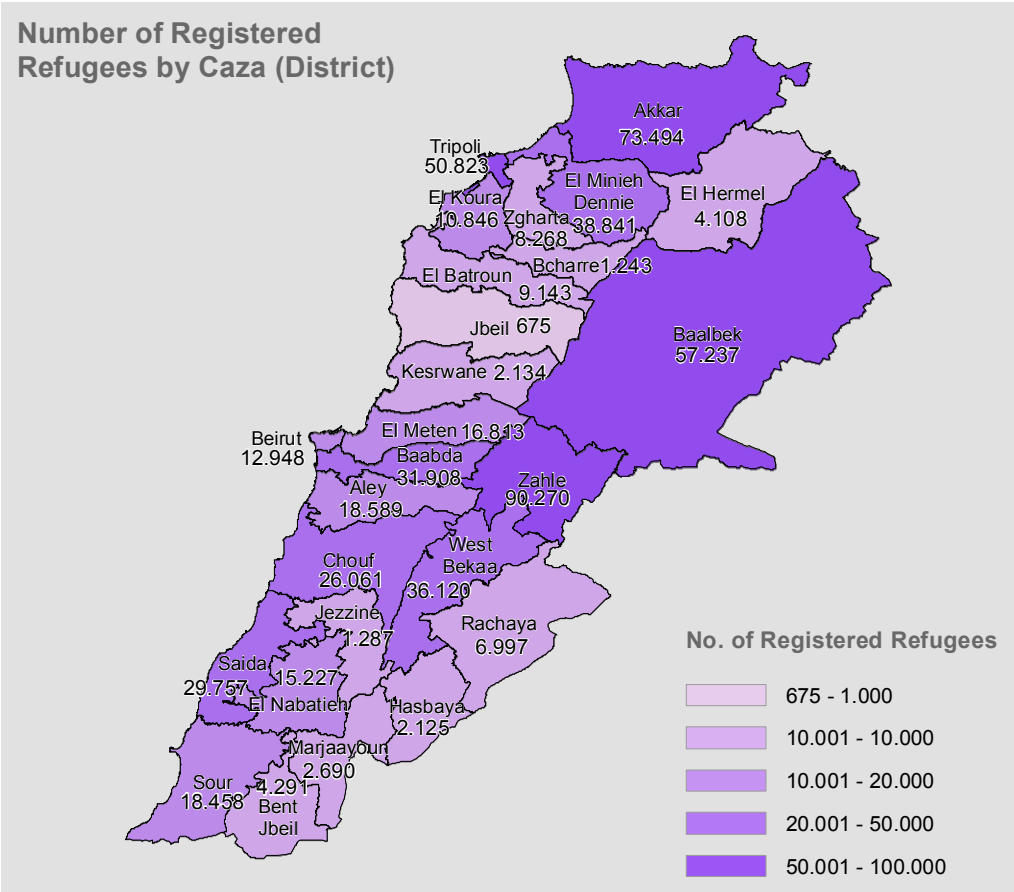
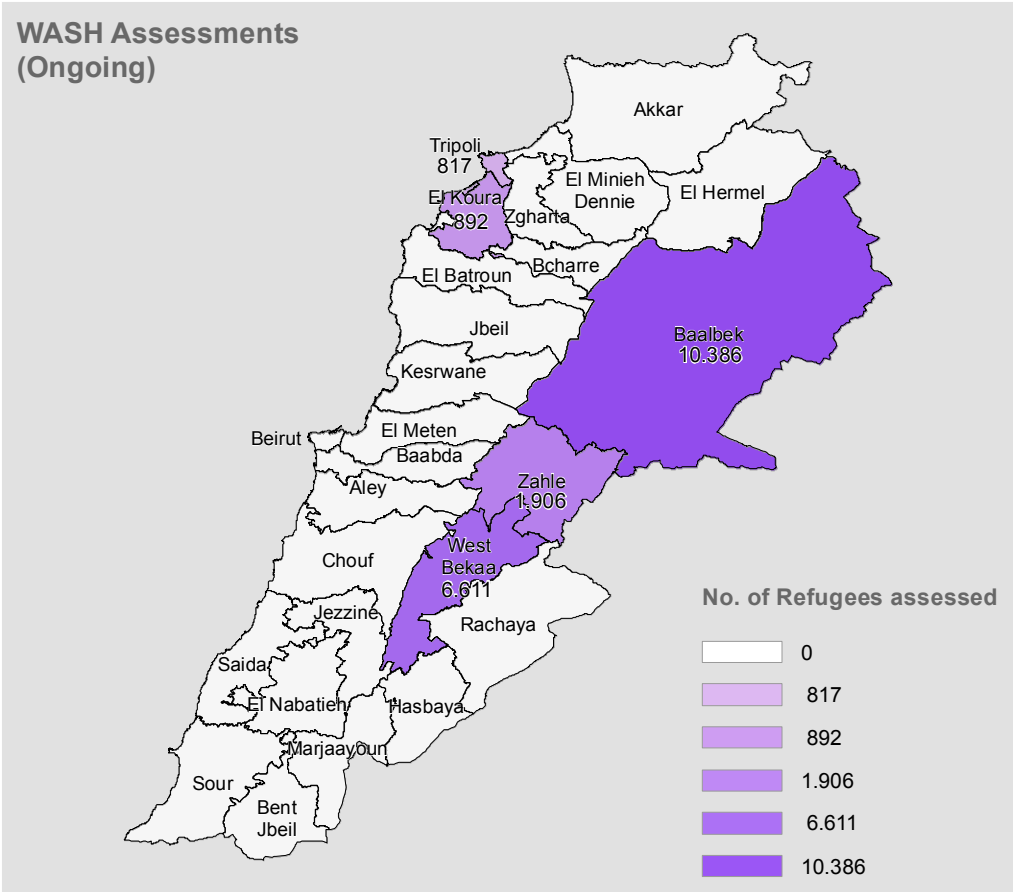
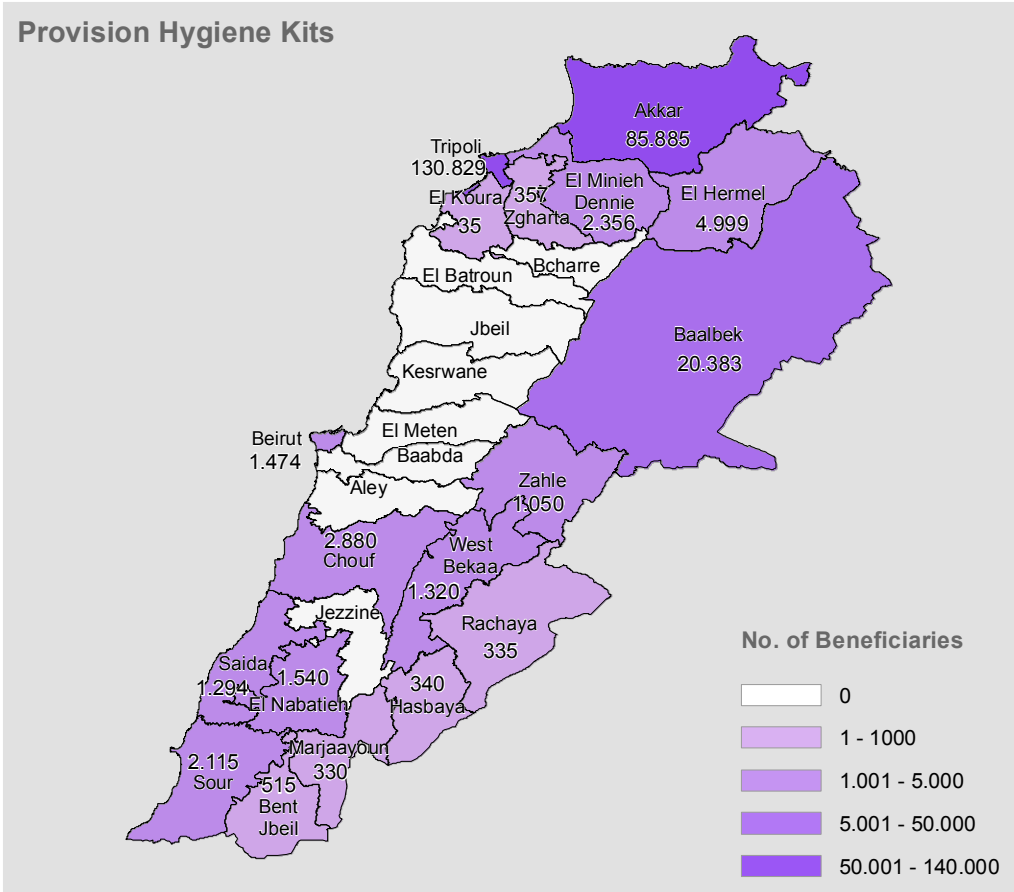
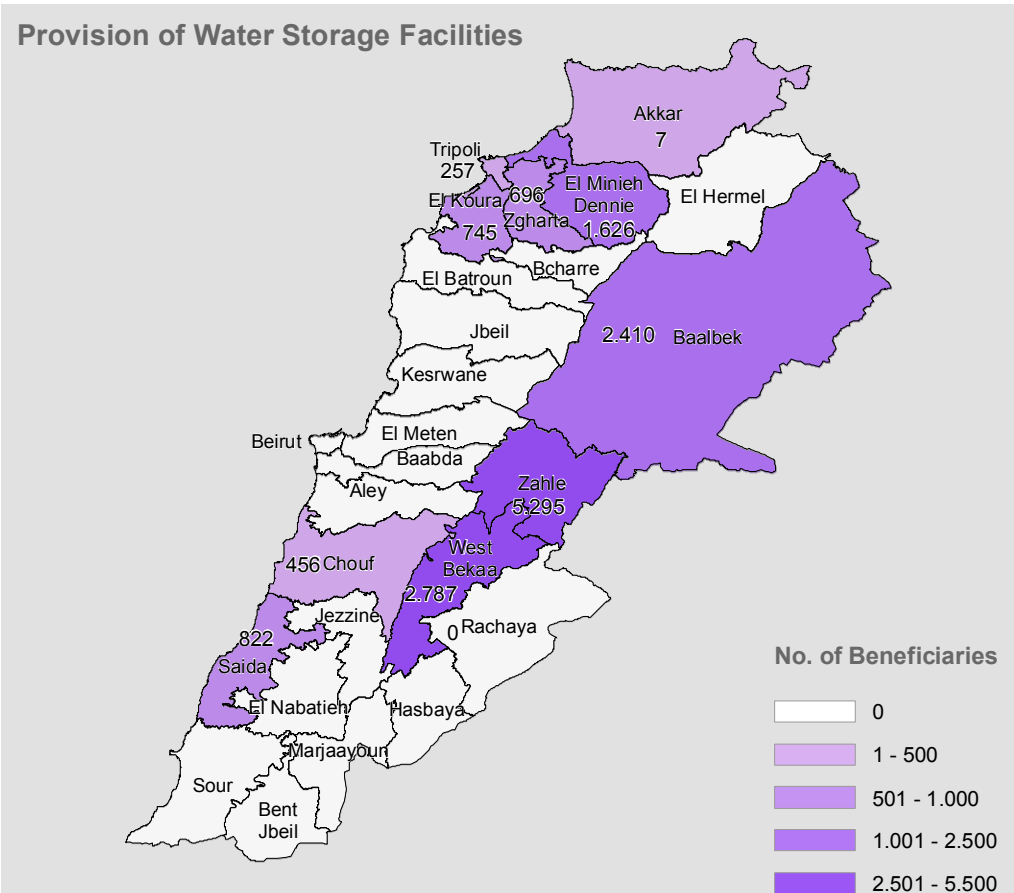
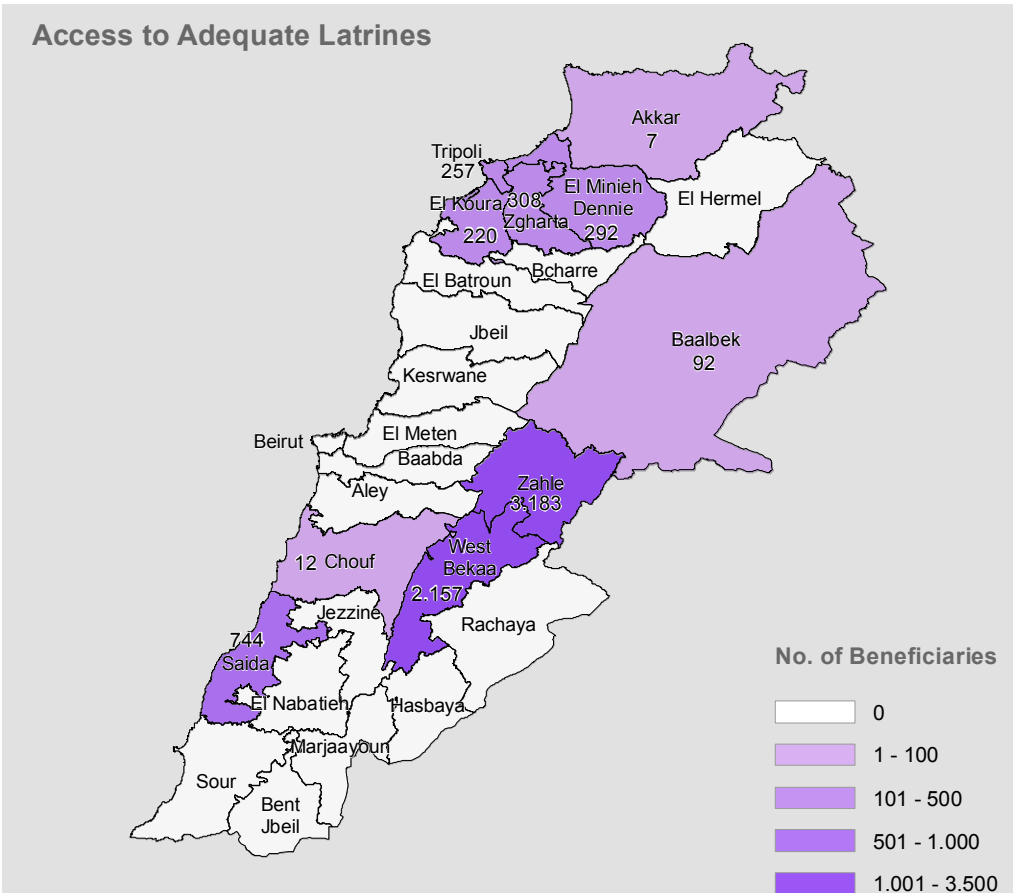
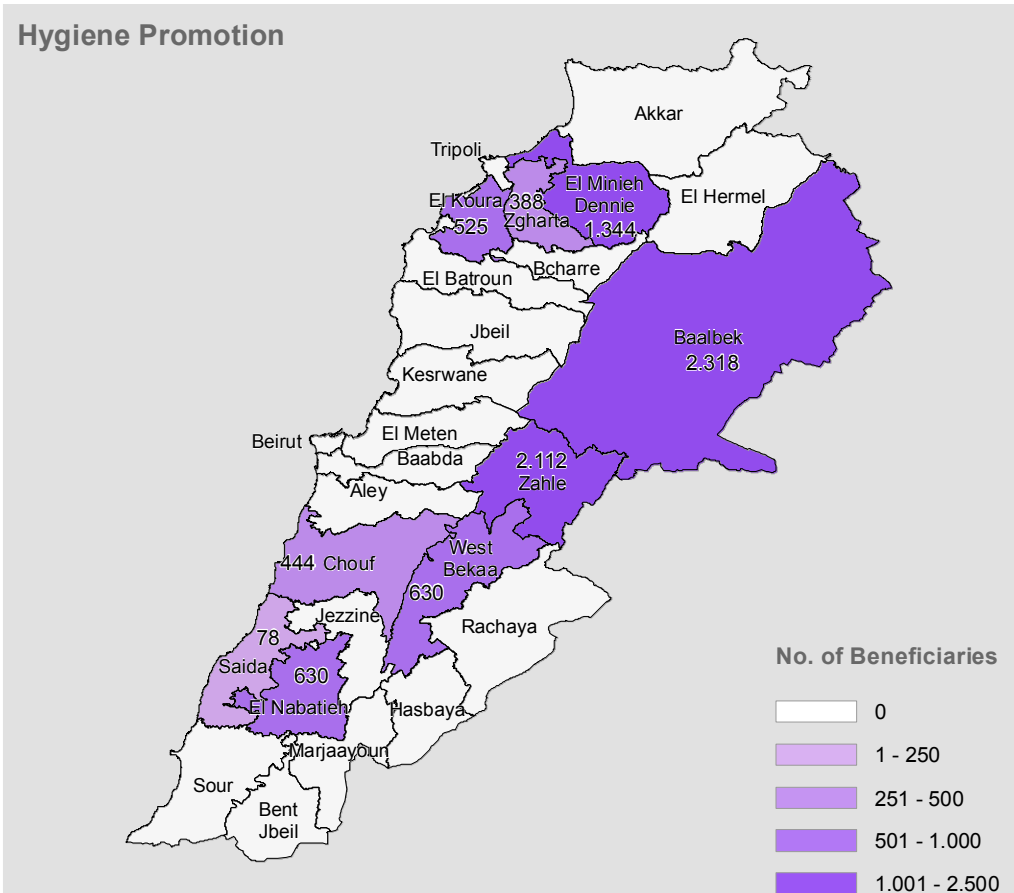


SYRIA REFUGEE RESPONSE LEBANON. Selected WASH Sector Activities Reached During July 2013



Boundaries, names, and designations used on this map do not imply official endorsement of the United Nations or UNHCR. All data used were the best available at the time of map production. Boundaries by the National Physical Master Plan for the Lebanese Territory (NPMP/PT) 2005. The WASH activities data for July 2013 by UNHCR. The registered refugee data as of 12 August 2013 by UNHCR. This information is based on WASH Partners reporting to the WASH Activities Matrix. WASH Sector Working Group - David Adams, dadams@unicef.org, Data collection focal point for the sector/UNICEF Fredrick Hanga, fhanga@unicef.org UNHCR Registered refugees figures - Salam Shahin shahin@unhcr.org GIS and Mapping by UNHCR. For more information and updates, contact: Rodolphe Ghossoub, ghossoub@unhcr.org

