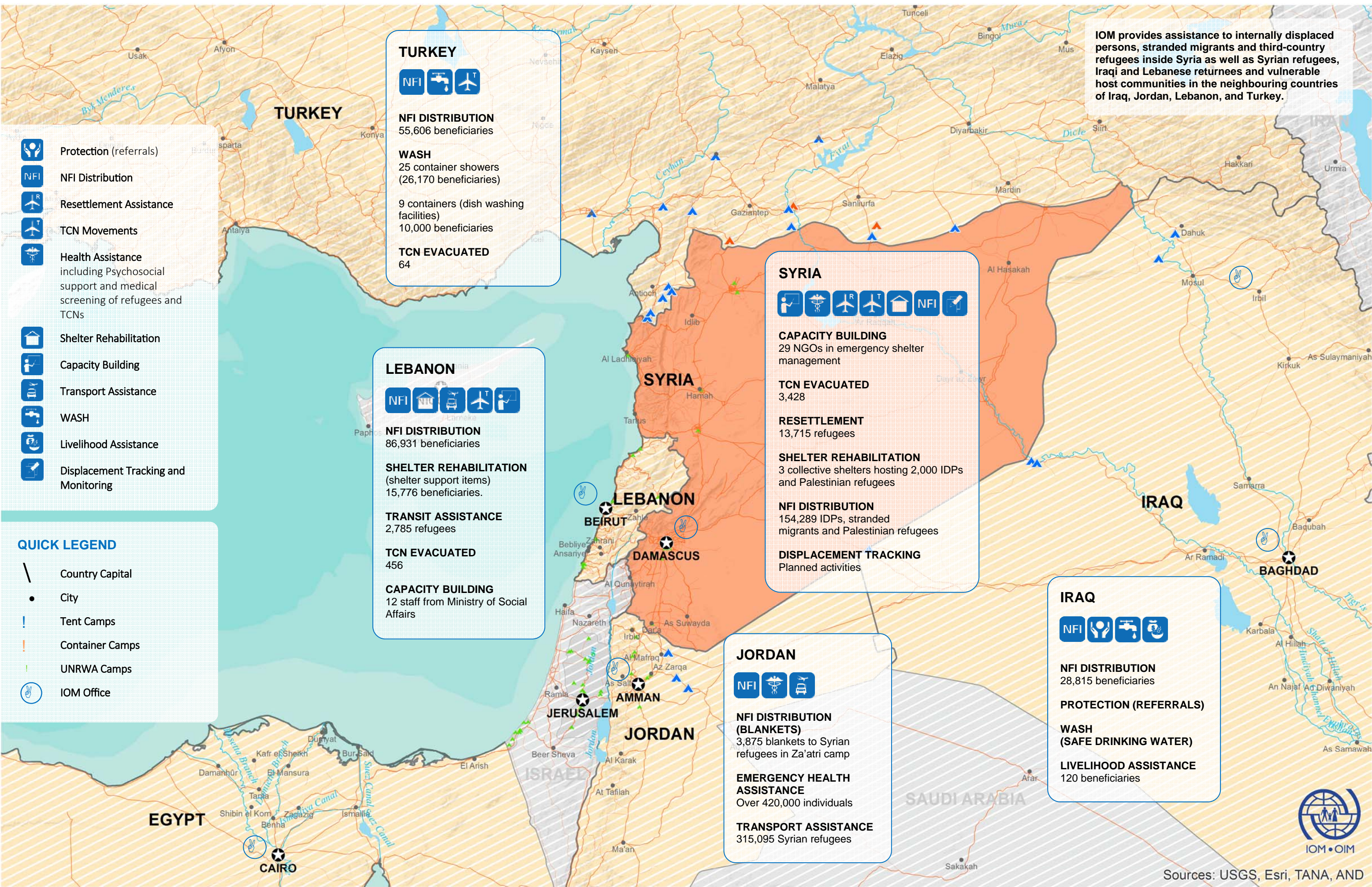


IOM REGIONAL RESPONSE TO THE SYRIAN CRISIS



IOM provides assistance to internally displaced persons, stranded migrants and third-country refugees inside Syria as well as Syrian refugees, Iraqi and Lebanese returnees and vulnerable host communities in the neighbouring countries of Iraq, Jordan, Lebanon, and Turkey.

TURKEY

NFI

NFI DISTRIBUTION
55,606 beneficiaries

WASH
25 container showers (26,170 beneficiaries)

9 containers (dish washing facilities)
10,000 beneficiaries

TCN EVACUATED
64

LEBANON

NFI

NFI DISTRIBUTION
86,931 beneficiaries

SHELTER REHABILITATION
(shelter support items)
15,776 beneficiaries.

TRANSIT ASSISTANCE
2,785 refugees

TCN EVACUATED
456

CAPACITY BUILDING
12 staff from Ministry of Social Affairs

SYRIA

CAPACITY BUILDING
29 NGOs in emergency shelter management

TCN EVACUATED
3,428

RESETTLEMENT
13,715 refugees

SHELTER REHABILITATION
3 collective shelters hosting 2,000 IDPs and Palestinian refugees

NFI DISTRIBUTION
154,289 IDPs, stranded migrants and Palestinian refugees

DISPLACEMENT TRACKING
Planned activities

JORDAN

NFI

NFI DISTRIBUTION (BLANKETS)
3,875 blankets to Syrian refugees in Za'atri camp

EMERGENCY HEALTH ASSISTANCE
Over 420,000 individuals

TRANSPORT ASSISTANCE
315,095 Syrian refugees

IRAQ

NFI

NFI DISTRIBUTION
28,815 beneficiaries

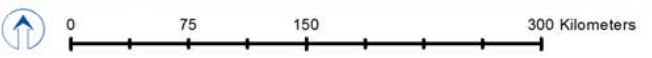
PROTECTION (REFERRALS)

WASH (SAFE DRINKING WATER)

LIVELIHOOD ASSISTANCE
120 beneficiaries

- Protection (referrals)
- NFI Distribution
- Resettlement Assistance
- TCN Movements
- Health Assistance including Psychosocial support and medical screening of refugees and TCNs
- Shelter Rehabilitation
- Capacity Building
- Transport Assistance
- WASH
- Livelihood Assistance
- Displacement Tracking and Monitoring

- QUICK LEGEND**
- Country Capital
 - City
 - Tent Camps
 - Container Camps
 - UNRWA Camps
 - IOM Office



Data source: IOM, UNHCR, UNRWA, WFP • This map is for illustrative purpose only. Names and boundaries do not imply official endorsement or acceptance by IOM.



Sources: USGS, Esri, TANA, AND