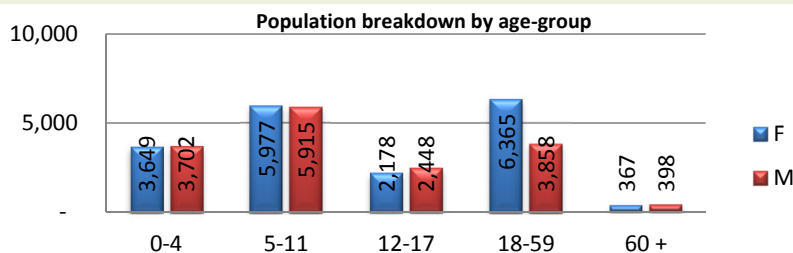


**Camp Opened:** August 2011    **Camp phase:** Maintenance & Care

### Refugee Population

# 34,857

(As of 30 April 2013)



### Geographic Snapshot

<b>GPS Coordinates</b>	Longitude:	41.51'39.1"
	Latitude:	4.22'09.6"
<b>Size of camp area</b>	395.5 hecta.	
<b>Number of Sector Divisions</b>	4	
<b>Number of blocks</b>	60	
<b>Number of Communities</b>	510	
<b>Number of family plots</b>	8,160	
<b>Average Plot Size per Household</b>	180m <sup>2</sup>	
<b>Distance from Border</b>	42Km	

### Contextual Background

#### Pattern in Population Change

► Organized large-scale relocation from the Transit Centre will begin on 05 August 2011 and will complete early September 2011, during which time Hilaweyn Camp has grown rapidly

#### Areas of Origin

► 50% are from Gedo, 31% are from Bay, 16% are from Bakol, remaining are from various other locations in Somalia.

#### Cultural Background

► Sunni Muslim

► 64% are May May speakers from Rahanweyn clan, 22% are Mahatiri speakers from Maheren clan and the remaining are from various other Somali clans.

#### Main Occupations

► Pastoralists (livestock herding: goats, camels, cows, sheep and donkeys)

### Tips for Humanitarians

- UNHCR provides protection and monitors delivery of services to all refugees in Hilaweyn Camp.
- Camp Management is done by ARRA with support from UNHCR.
- Camp Coordination Meetings, co-chaired by ARRA and UNHCR, are held weekly in Hilaweyn Camp with humanitarian actors.
- All refugees in Hilaweyn Camp are individually registered in UNHCR's proGres database and hold ration cards. Ration card numbers are useful for referral between partners and for distribution events. Refugees have been given a Proof of Registration document showing family-related and individual details, including each person's photo.
- Biometrics (fingerprinting) has been used for registering refugees living in Hilaweyn. Biometrics assists in preventing double registration. No refugee household should have more than one ration card.
- Treatment of SAM (Severe Acute Malnutrition) and Treatment of MAM (Moderate Acute Malnutrition), for both Under 5's and MOC (Malnourished Other Categories) Programme, a targeted feeding programme for severely malnourished children between 5 years and 18

### Administrative Structure

#### Role of Ethiopian Government in Hilaweyn

\* **ARRA is active in the following sectors:**

► Camp Management ► Protection ► Camp security ► Primary health care ► Primary education ► Food/CRIs distribution

\* **ARRA staff posted inside the camp include:**

► Camp Coordinator ► Programme Officer ► Protection Officers ► Health Staff ► Teachers ► Distribution Coordinator

#### Role of Camp Residents in Self-Management

**Refugee Central Committee (RCC)** - A Refugee Chairperson and four other refugees are acting in a coordination role until the RCC can be elected. The RCC will be a resident coordination and leadership body that is consulted on multi-sectoral issues pertaining to camp life. It will be made up of a Chairman, a Deputy, Zone Leaders and women representatives. Zone Leaders gather information on each zone in the camp, provide information to people living in each zone and advocate on behalf of their respective zone residents.

**Women's association** - The Women's Association, made up of 35 women elected by camp residents, runs a grinding mill (income generation project), mobilizes women's groups and represents women's interests in camp coordination.

**Food Distribution Committee** - provides information about food distribution to the community, assist with scooping and provide feedback on the quality of the food.

**Child welfare committee** - Ensure childrens participate in decision making process.

\*\* Plans are underway to establish the following resident self-governance associations:

#### Neighbourhood Watch Programme




#### Disability Committee

#### Refugee / Host Community Committee

#### Local Administration

The Kebele Chairman is responsible for local (non-refugee) administration on behalf of Dollo Ado Woreda, Somali Regional State, Ethiopia. The Kebele Chairman and his administrative committee are consulted about refugee-host community relationship, natural resource use and managing conflicts between the refugee and host communities, with the help of local elders.




# Hilaweyn Camp: Who Does What Where

Health 	
Activities	Actors
♦Primary Health Care offers in-patient, out-patient, basic laboratory services, Immunization (EPI) and reproductive health including basic emergency obstetric and neonatal care services	ARRA
♦Community Health workers identify new malnutrition cases, assist in health education, community referrals to the health facilities and following up on patients already in the health programmes.among other activities	ARRA
♦Rehabilitation programmes for disabled people	RADO
♦Mobile health team doing outreach	UNHCR, WHO, UNICEF
♦Acute Watery Diarrhea prevention and response	UNHCR, WHO, UNICEF
Infrastructure	
♦Acute Watery Treatment Centre (in progress)	ARRA
♦Construction of permanent health center	UNHCR, ARRA
♦Health Clinic with in-patient and out-patient treatment, EPI rooms, an ante-natal care room, delivery room, post-natal care room, a laboratory and a dispensary	ARRA
Gaps	
♦Strengthening of Health Information System	
♦No HIV/AIDS program	
♦Comprehensive Emergency obstetric care and emergency surgical services	
Nutrition 	
Activities	Actors
♦Treatment of SAM (Severe Acute Malnutrition), for both Under 5's and MOC (Malnourished Other Categories) Programme, a targeted feeding programme for severely malnourished children between 5 years and 18 years.	MSF-H (SC) ACF (OTP)
♦Treatment of MAM (Moderate Acute Malnutrition)	ACF
♦Blanket / complimentary feeding for all children under 5	ACF
♦Infant Young Child Feeding Programme	ACF, SC-I, UNICEF
Infrastructure	
♦01 OTP Centre, 02 identified for decentralization.	MSF-H
♦MAM / Blanket Feeding Centre.	ACF
♦Stabilization Centre (SC) where all severe acute malnourished children with complications are treated in an in-patient department. 01 service established.	MSF-H
Gaps	
♦Strengthening of Health Information System	
♦Strengthen outreach nutrition and IYCF program	
Water, Hygiene & Sanitation 	
Activities	Actors
♦Trucking of treated water from the non-permanent water treatment plant – Construction of semi-permanent latrines – Upgrade the distribution system and water source – Household shower construction	OXFAM-GB
♦Hygiene Promotion – sensitization, awareness raising and community mobilization on water and sanitation issues	OXFAM-GB
Infrastructure	
♦Permanent water system designed and under installation. Five (05) more jet wells installed for Hiloywne B	OXFAM-GB, UNHCR,
♦Bath shelter construction	OXFAM-GB
♦Referral SFP Centre	
♦Communal latrines constructed and many more under way	OXFAM-GB, UNHCR
♦ECOSAN latrines are to be piloted	OXFAM-GB
♦Emergency (trench) latrines	OXFAM-GB, UNHCR
Gaps	
♦Property rights and sanitation corridors	
♦Clean demarcation of sanitation corridors – drainage in the camp including flood mapping	
♦Sustainable solid waste disposal management system	
♦Upgrade the distribution system and water source	
♦Road access (in particular accessing the water source)	

UNHCR gratefully acknowledges the support of the following partners in Hilaweyn Camp:






# Hilaweyn Camp: Who Does What Where (continued)

Protection & Community Services 	
Activities	Actors
♦On-site ARRA Protection Officer is the first point of contact for security liaison and cases of detention	ARRA
♦Child protection activities, including establishing child-friendly spaces	UNHCR, SC-I, UNICEF
♦Grinding mill for women	UNHCR
♦Child friendly spaces with playgrounds, games and materials	SC-I, UNICEF
♦Women & Girls' Wellness Centre and Outreach Center open, providing case management and psychosocial support services for survivors of GBV and activities for all women and girls.	IRC
♦Supporting camp self-management committees	UNHCR, ARRA
♦Refugee/Host community conflict resolution	UNHCR
♦Establishing programmes that prevent and respond to Sexual and Gender Based Violence incidents	UNHCR, IRC
♦Protection monitoring, individual case follow-up and provision of community services	UNHCR
♦Facilitation of family reunification, including for Unaccompanied Minors and Separated Children	UNHCR, ARRA
♦Supporting Older age people	HelpAge, PWO
♦Registration updates, lost ration cards and newborn and death registration ("continuous registration")	UNHCR
<b>Infrastructure</b>	
♦Women & Girls' Wellness Centre" and "Outreach Centre"	IRC
♦Child friendly spaces centers	UNICEF, SC-I
♦Women's Association grinding mill	UNHCR
<b>Gaps</b>	
♦Self reliance	
Shelter 	
Activities	Actors
♦Emergency shelter (tent) supply and erection	UNHCR, NRC, DRC
♦Transitional shelter provision	UNHCR, NRC,
<b>Infrastructure</b>	
♦Emergency Shelter: Lightweight Emergency Tent; 2 rooms; can accommodate average family size of 5 persons; 15-21m2	UNHCR
♦Emergency Shelter: Family Tent; 1 room; can accommodate average family size of 5 persons; 16 m2 main floor area, plus two 3.5m2 vestibules, for a total area of 23 m2	UNHCR, NRC
♦A market place of 500 Scm2	DRC
♦Transitional Shelter: bamboo and mud brick shelters; 2 room; (planned)	UNHCR, NRC
<b>Gaps</b>	
♦Survey Results prepared and send for feedback	
♦Transitional Shelter is in planning stages	
♦Incomplete address system	
Core Relief Items 	
Activities	Actors
♦Sleeping mats, jerry cans, buckets, kitchen sets, soap and blankets distribution	UNHCR, ARRA
<b>Infrastructure</b>	
♦01 kerosene distribution stations of 20 000 Liters construction completed	DRC
♦Central Logistics Base is located in Hilaweyn Camp (which supplies all camps); it consists of 5 rubhalls	UNHCR
<b>Gaps</b>	
♦Household Fuel	
♦Lamps	

UNHCR gratefully acknowledges the support of the following partners in Hilaweyn Camp:



# Hilaweyn Camp: Who Does What Where (continued)

Logistics 	
Activities	Actors
♦Truck fleet for field deliveries	UNHCR
♦Transportation of family reunification cases	IOM
♦Office and facilities construction	UNHCR
♦Vehicle maintenance, generator repair and other technical support services	THW
<b>Infrastructure</b>	
♦Logistics infrastructure for Hilaweyn Camp is located in Hiloweyn Camp and Dollo Ado	
♦Vehicle Maintenance, generator repair and technical support services are provided by THW in UNHCR Dollo Ado compound	
♦5 rub halls of which one is on loan from WFP	
<b>Gaps</b>	
♦Further upgrade of access roads to Type B	
<b>Education </b>	
Activities	Actors
♦Non formal education	SC-I
♦YEP: Adult literacy and numeracy	NRC
♦Primary school construction	UNHCR, ARRA, UNICEF, LWF, NRC
♦ABE	SC-I
♦ECCD schools	SC-I
<b>Infrastructure</b>	
♦Primary school constructions	UNHCR, ARRA, UNICEF
♦YEP center construction	NRC
♦Emergency school	SC-I
<b>Gaps</b>	
♦School supplies (books, desks, pencils, uniforms, etc.)	
♦Secondary school	
♦Water provision for schools	
<b>Environment </b>	
Activities	Actors
♦Environment assessment	PWO, LWF
♦Raise seedlings and distribute seedlings to the refugees, host communities, agencies and other stakeholders	PWO
♦Rehabilitate degraded environment through terracing and soil bonding activities (about 2Km of degraded lands will be rehabilitated by constructing soil bundling and tracing and 2 hectares will be planted by indigenous trees)	PWO
♦Promote agro-forestry plantation and catchment rehabilitation of areas along the Genale river banks	PWO
♦Build the capacities of refugees and host communities as well as environment staffs and paraprofessionals in the protection, rehabilitation and conservation of local environment.	PWO
♦Solar light and fuel stoves distribution	DRC, WVI
♦Nursery establishment, so far raised more than 50,000 seedlings and distributed more than 41000 seedlings to refugee households, IPs and host communities, formed area closure of 2 hectares for reforestation, environment clubs and community sensitization on environmental protection and conservation.	PWO
<b>Infrastructure</b>	
<b>Gaps</b>	
♦Household fuel	
♦Environment protection mechanism	

UNHCR gratefully acknowledges the support of the following partners in Hilaweyn Camp:



# Hilaweyn Camp: Who Does What Where (continued)

Food 	
<b>Activities</b>	<b>Actors</b>
♦Food supply and transportation	WFP
♦Food distribution	ARRA
<b>Infrastructure</b>	
♦2 rubbishes	ARRA
♦1 food distribution point	ARRA
<b>Gaps</b>	
♦Secondary distribution points	
♦Food distribution point does not meet standards and needs sheltering Food distribution system and post-distribution monitoring (no accurate process, no accurate food and stock report)	
♦lack of fencing for distribution center	
<b>Livelihoods</b> 	
<b>Activities</b>	<b>Actors</b>
♦Micro-Credit	
♦Skills Training i.e. literacy, leather product and tailoring	NRC, LWF
♦Women's association grinding mill	UNHCR
♦Irrigation schemes focusing on livelihoods improvement along the Genale river	PWO
<b>Infrastructure</b>	
<b>Gaps</b>	
♦No firewood program	

UNHCR gratefully acknowledges the support of the following partners in Hilaweyn Camp:

