

Somali Refugees in the Region

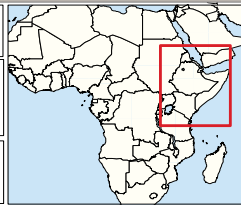
As of 31 October 2012



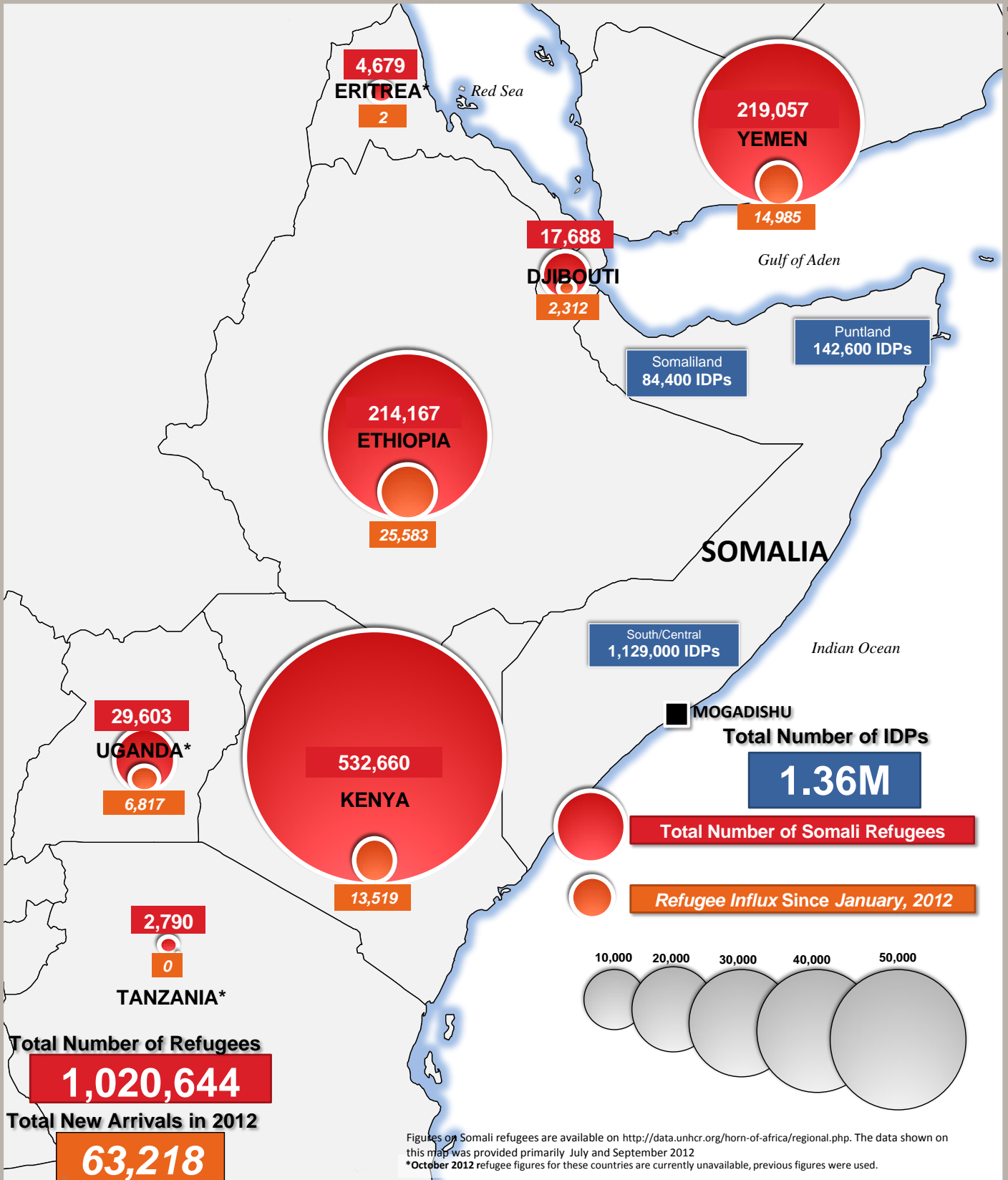
UNHCR Somalia
Nairobi, Kenya

Source:
UNHCR Offices, Various IDP assessments including the Somalia IASC PMT project Global Insight digital mapping © 1998 Europa Technologies Ltd.

The boundaries and names shown and the designations used on this map do not imply official endorsement or acceptance by the United Nations.



Somalia_IDPS&Refugees_October2012_A3



Figures on Somali refugees are available on <http://data.unhcr.org/horn-of-africa/regional.php>. The data shown on this map was provided primarily July and September 2012.
 *October 2012 refugee figures for these countries are currently unavailable, previous figures were used.