

Dollo Ado Population Statistical Report

As of 14 April 2012

Figure 1.1 - Total Refugee Population in Dollo Ado

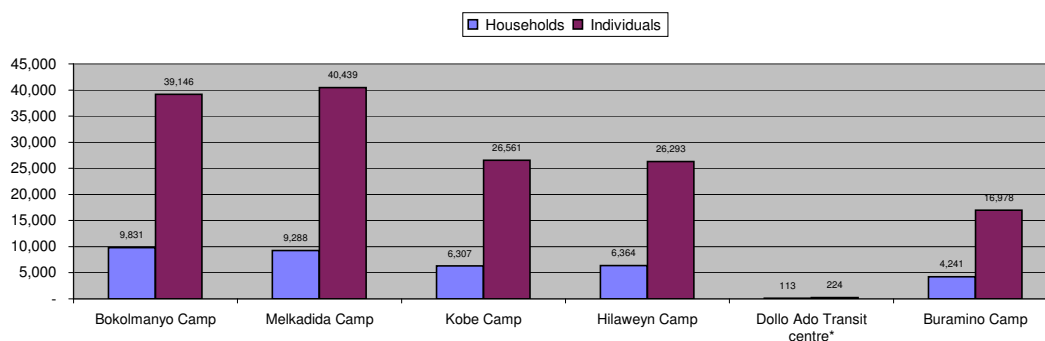


Table 1.1 - Total Refugee Population in Dollo Ado

Site/Camp	As of 31 Dec 2010		As of 31 Dec 2011		Current Total	
	Households	Individuals	Households	Individuals	Households	Individuals
Bokolmanyo Camp	3,988	14,988	9,624	38,501	9,831	39,146
Melkadida Camp	6,452	25,491	10,024	40,696	9,288	40,439
Kobe Camp	n/a	n/a	5,946	26,033	6,307	26,561
Hilaweyn Camp	n/a	n/a	6,119	25,747	6,364	26,293
Buramino Camp	n/a	n/a	911	4,045	4,241	16,978
Camp Sub-Total	10,440	40,479	32,624	135,022	36,031	149,417
Dollo Ado Transit centre*	n/a	n/a	1,902	7,284	113	224
Temporary Locations Sub-Total	n/a	n/a	n/a	n/a	113	224
GRAND TOTAL ALL LOCATIONS	10,440	40,479	34,526	142,306	36,144	149,641

* Individuals currently in the Transit Centre. All new arrivals are registered at the Transit Centre and are subsequently relocated to the camps.

Figure 1.2 - New Arrivals at Reception Centre During Current Month (Weekly)

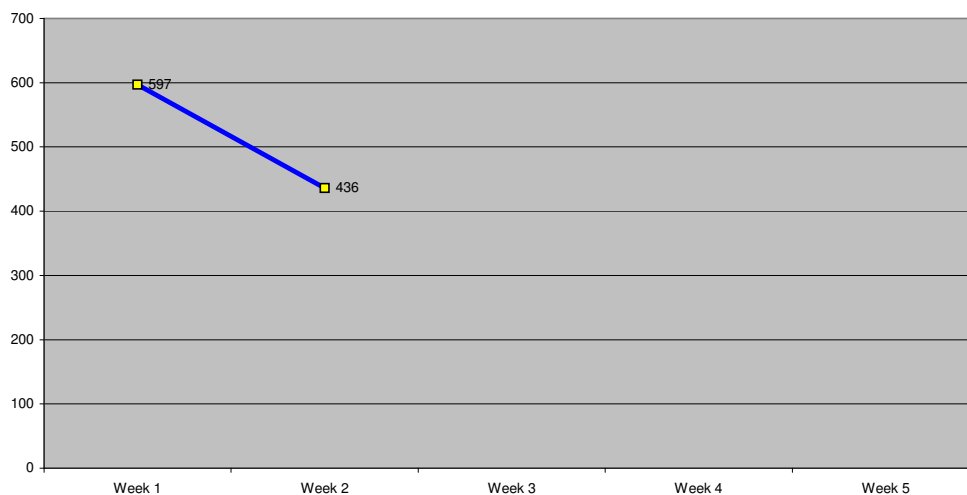


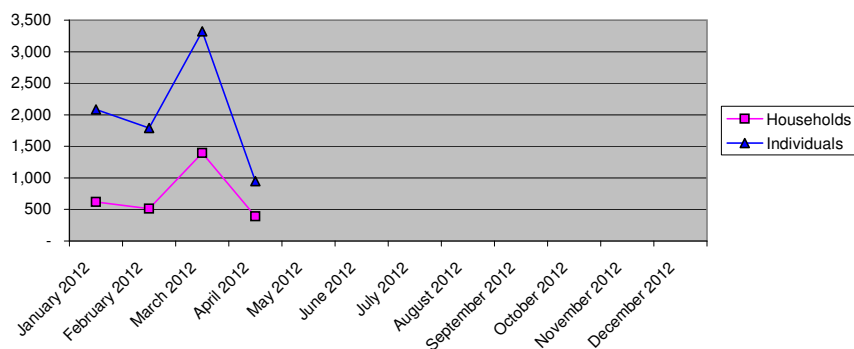
Table 1.2 - Daily New Arrivals and Pre-registration by ARRA at the Reception Centre

Date	Newly Arrived Individuals	Pre-registered by ARRA *
Sun 01 Apr 12		**
Mon 02 Apr 12	146	132
Tue 03 Apr 12	165	154
Wed 04 Apr 12	45	42
Thu 05 Apr 12	37	31
Fri 06 Apr 12	103	95
Sat 07 Apr 12	101	101
Sun 08 Apr 12		**
Mon 09 Apr 12	190	173
Tue 10 Apr 12	86	77
Wed 11 Apr 12	84	75
Thu 12 Apr 12	76	68
Fri 13 Apr 12		**
Sat 14 Apr 12		**
Sun 15 Apr 12		
Mon 16 Apr 12		
Tue 17 Apr 12		
Wed 18 Apr 12		
Thu 19 Apr 12		
Fri 20 Apr 12		
Sat 21 Apr 12		
Sun 22 Apr 12		
Mon 23 Apr 12		
Tue 24 Apr 12		
Wed 25 Apr 12		
Thu 26 Apr 12		
Fri 27 Apr 12		
Sat 28 Apr 12		
Sun 29 Apr 12		
Mon 30 Apr 12		
Tue 01 May 12		
TOTAL THIS MONTH	1,033	948

* Pre-registration by ARRA is not necessarily done on the day of Arrival

** Represent days when ARRA was not receiving Asylum seekers.

The number of those received during these days is include in the figure of next receiving day.

Figure 1.3 - Pre-Registration Trends in 2012 (Reception Centre/ ARRA)


Note: these are registration volumes by month, not cumulative figures.

Table 1.3 - Pre-Registration Trends in 2012 (Reception Centre/ ARRA)

Month	Households	Individuals
January 2012	621	2,084
February 2012	512	1,789
March 2012	1,395	3,324
April 2012	391	948
May 2012		
June 2012		
July 2012		
August 2012		
September 2012		
October 2012		
November 2012		
December 2012		
Total	2,919	8,145

Table 1.4 - Registration & Relocation Trends in Transit Centre up to date

Stage of Registration & Relocation	Individuals
Total individuals fully registered so far this month	1,091
Total individuals relocated to camps so far this month	1,591
Total individuals fully processed (have ration card), but not yet relocated	202

Camp Population by Age and Sex breakdown

As of 14 April 2012

Table 2.1 - ALL CAMPS Demographic Breakdown*

Age Group	Sex				Total	
	Male	(%)	Female	(%)	Total	(%)
0 - 4	15,366	10.3%	14,980	10.0%	30,346	20.3%
5 - 11	26,020	17.4%	25,030	16.8%	51,050	34.2%
12 - 17	10,039	6.7%	8,870	5.9%	18,909	12.7%
18 - 59	16,959	11.4%	28,607	19.1%	45,566	30.5%
60 and above	1,841	1.2%	1,705	1.1%	3,546	2.4%
Total ALL CAMPS	70,225	47.0%	79,192	53.0%	149,417	100.0%

* These total figures apply only to camps, not to the Transit Centre or Reception Centre

Figure 2.1 - ALL CAMPS Demographic Breakdown*

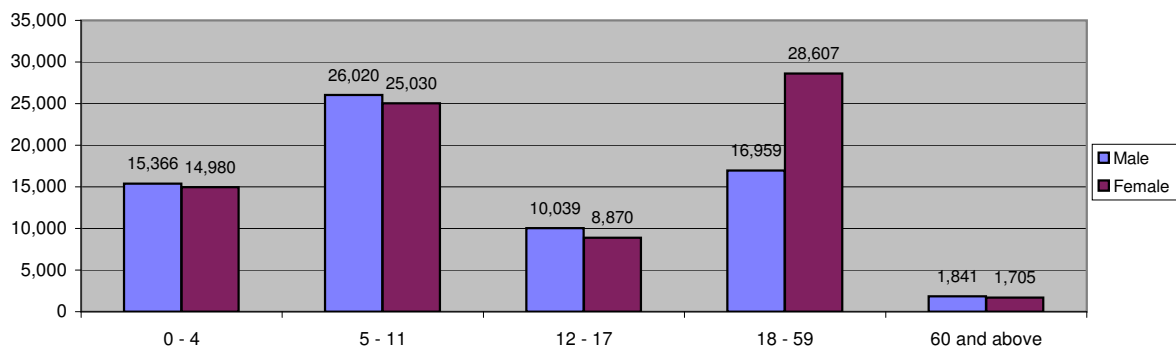


Table 2.2 - Melkadida Camp Demographic Breakdown

Age Group	Sex				Total	
	Male	(%)	Female	(%)	Total	(%)
0 - 4	4,059	10.0%	3,833	9.5%	7,892	19.5%
5 - 11	7,347	18.2%	7,164	17.7%	14,511	35.9%
12 - 17	2,897	7.2%	2,703	6.7%	5,600	13.8%
18 - 59	3,842	9.5%	7,747	19.2%	11,589	28.7%
60 and above	437	1.1%	410	1.0%	847	2.1%
Total Melkadida	18,582	46.0%	21,857	54.0%	40,439	100.0%

Figure 2.2 - Melkadida Camp Demographic Breakdown

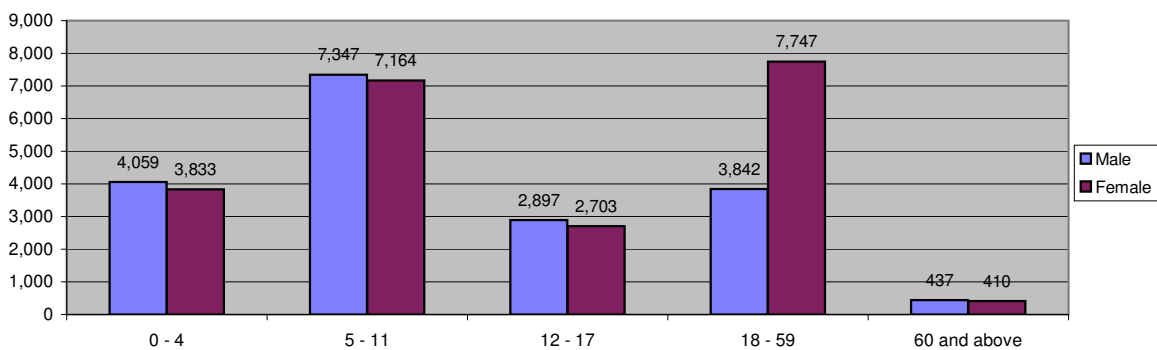


Table 2.3 - Bokolmanyo Camp Demographic Breakdown

Age Group	Sex				Total	
	Male	(%)	Female	(%)	Total	(%)
0 - 4	3,676	9.4%	3,736	9.5%	7,412	18.9%
5 - 11	6,823	17.4%	6,582	16.8%	13,405	34.2%
12 - 17	2,899	7.4%	2,422	6.2%	5,321	13.6%
18 - 59	4,480	11.4%	7,679	19.6%	12,159	31.1%
60 and above	442	1.1%	407	1.0%	849	2.2%
Total Bokolmanyo	18,320	46.8%	20,826	53.2%	39,146	100.0%

Figure 2.3 - Bokolmanyo Camp Demographic Breakdown

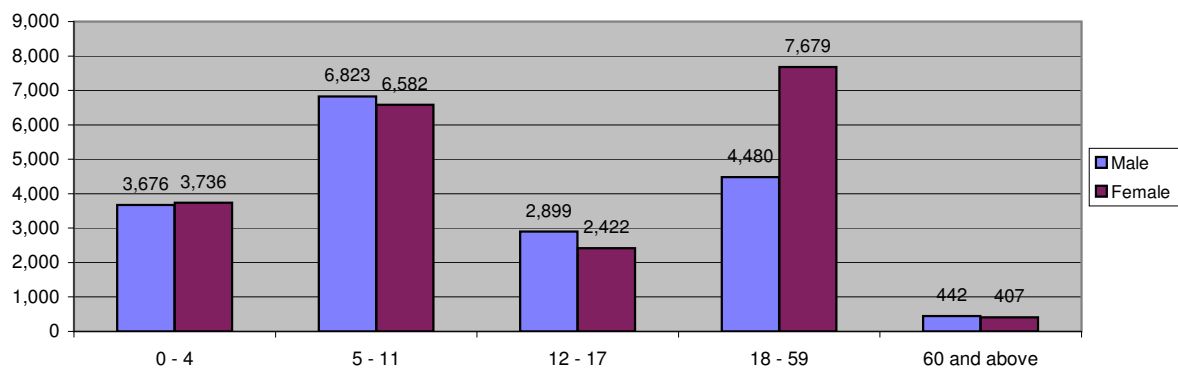


Table 2.4 - Kobe Camp Demographic Breakdown

Age Group	Sex				Total	
	81	74	Female	(%)	Total	(%)
0 - 4	2,786	10.5%	2,675	10.1%	5,461	20.6%
5 - 11	4,518	17.0%	4,166	15.7%	8,684	32.7%
12 - 17	1,668	6.3%	1,381	5.2%	3,049	11.5%
18 - 59	3,546	13.4%	4,978	18.7%	8,524	32.1%
60 and above	452	1.7%	391	1.5%	843	3.2%
Total Kobe	12,970	48.8%	13,591	51.2%	26,561	100.0%

Figure 2.4 - Kobe Camp Demographic Breakdown

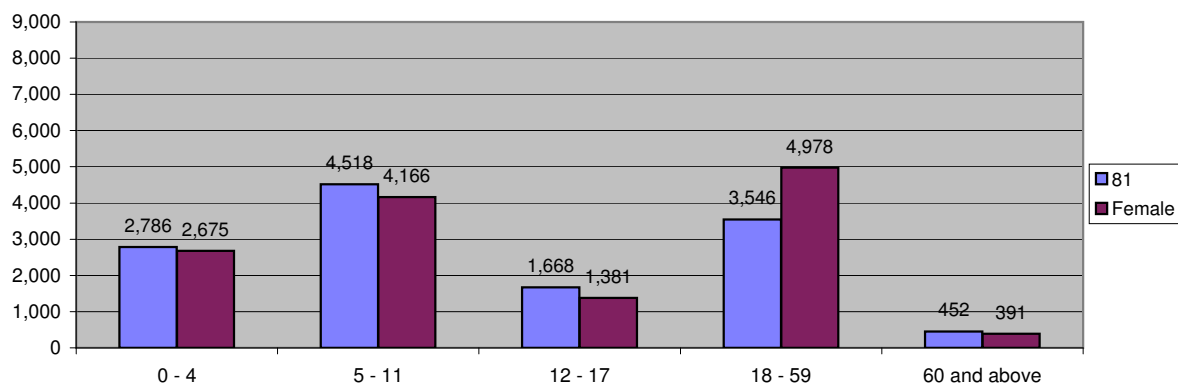


Table 2.5 - Hilaweyn Camp Demographic Breakdown

Age Group	Sex				Total	
	Male	(%)	Female	(%)	Total	(%)
0 - 4	2,829	10.8%	2,781	10.6%	5,610	21.3%
5 - 11	4,504	17.1%	4,416	16.8%	8,920	33.9%
12 - 17	1,611	6.1%	1,448	5.5%	3,059	11.6%
18 - 59	3,073	11.7%	5,010	19.1%	8,083	30.7%
60 and above	331	1.3%	290	1.1%	621	2.4%
Total Hilaweyn	12,348	47.0%	13,945	53.0%	26,293	100.0%

Figure 2.5 - Hilaweyn Camp Demographic Breakdown

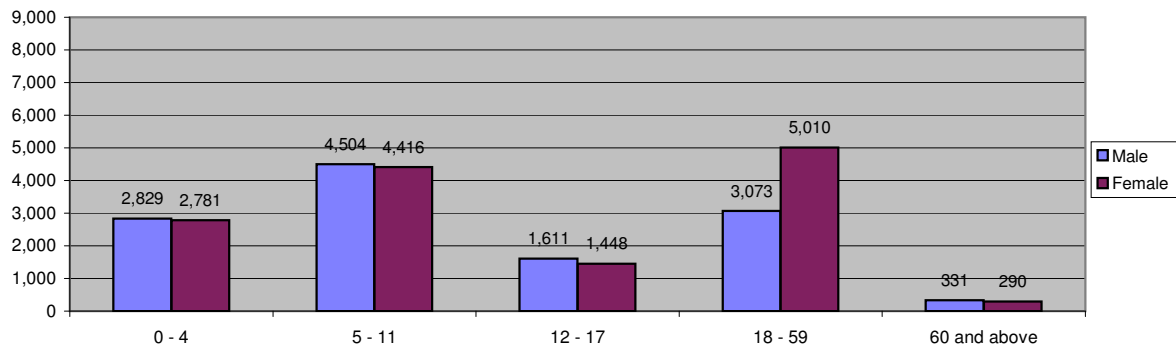


Table 2.6 - Buramino Camp Demographic Breakdown

Age Group	Sex				Total	
	Male	(%)	Female	(%)	Total	(%)
0 - 4	2,016	11.9%	1,955	11.5%	3,971	23.4%
5 - 11	2,828	16.7%	2,702	15.9%	5,530	32.6%
12 - 17	964	5.7%	916	5.4%	1,880	11.1%
18 - 59	2,018	11.9%	3,193	18.8%	5,211	30.7%
60 and above	179	1.1%	207	1.2%	386	2.3%
Total Buramino	8,005	47.1%	8,973	52.9%	16,978	100.0%

Figure 2.6 - Buramino Camp Demographic Breakdown

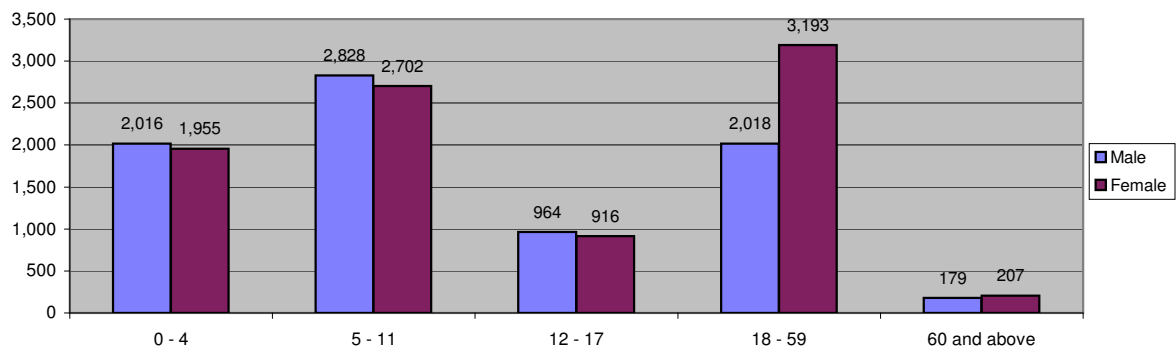


Table 2.7 - Dollo Ado Transit Centre Demographic Breakdown

Age Group	Sex				Total	
	Male	(%)	Female	(%)	Total	(%)
0 - 4	21	9.4%	11	4.9%	32	14.3%
5 - 11	21	9.4%	28	12.5%	49	21.9%
12 - 17	29	12.9%	21	9.4%	50	22.3%
18 - 59	65	29.0%	19	8.5%	84	37.5%
60 and above	5	2.2%	4	1.8%	9	4.0%
Total Transit Centre	141	62.9%	83	37.1%	224	100.0%

Figure 2.7 - Dollo Ado Transit Centre Demographic Breakdown

