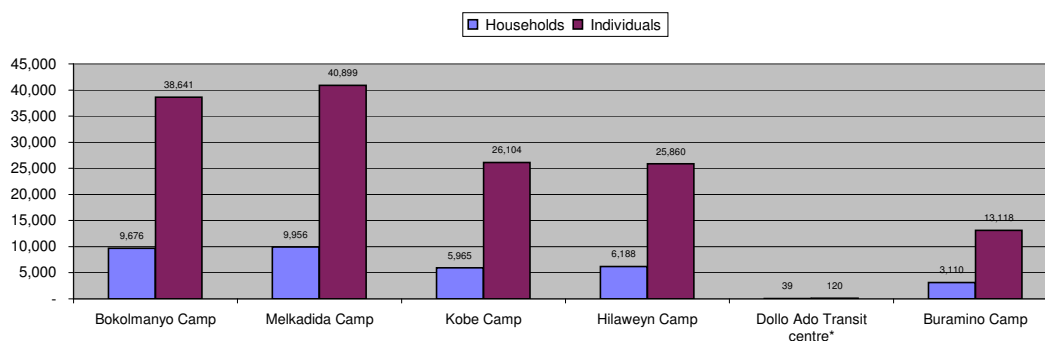


## Dollo Ado Population Statistical Report

*As of 13 Feb 2012*

**Figure 1.1 - Total Refugee Population in Dollo Ado**

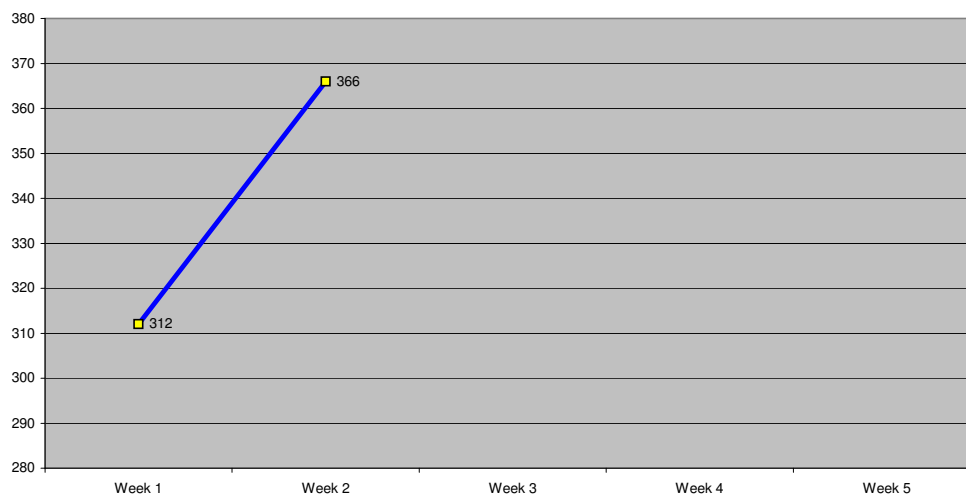


**Table 1.1 - Total Refugee Population in Dollo Ado**

Site/Camp	As of 31 Dec 2010		As of 31 Dec 2011		Current Total	
	Households	Individuals	Households	Individuals	Households	Individuals
Bokolmanyoy Camp	3,988	14,988	9,624	38,501	9,676	38,641
Melkadida Camp	6,452	25,491	10,024	40,696	9,956	40,899
Kobe Camp	n/a	n/a	5,946	26,033	5,965	26,104
Hilaweyn Camp	n/a	n/a	6,119	25,747	6,188	25,860
Buramino Camp	n/a	n/a	911	4,045	3,110	13,118
<b>Camp Sub-Total</b>	<b>10,440</b>	<b>40,479</b>	<b>32,624</b>	<b>135,022</b>	<b>34,895</b>	<b>144,622</b>
Dollo Ado Transit centre*	n/a	n/a	1,902	7,284	39	120
<b>Temporary Locations Sub-Total</b>	<b>n/a</b>	<b>n/a</b>	<b>n/a</b>	<b>n/a</b>	<b>39</b>	<b>120</b>
<b>GRAND TOTAL ALL LOCATIONS</b>	<b>10,440</b>	<b>40,479</b>	<b>34,526</b>	<b>142,306</b>	<b>34,934</b>	<b>144,742</b>

\* Individuals currently in the Transit Centre. All new arrivals are registered at the Transit Centre and are subsequently relocated to the camps.

**Figure 1.2 - New Arrivals at Reception Centre During Current Month (Weekly)**



**Table 1.2 - Daily New Arrivals and Pre-registration by ARRA at the Reception Centre**

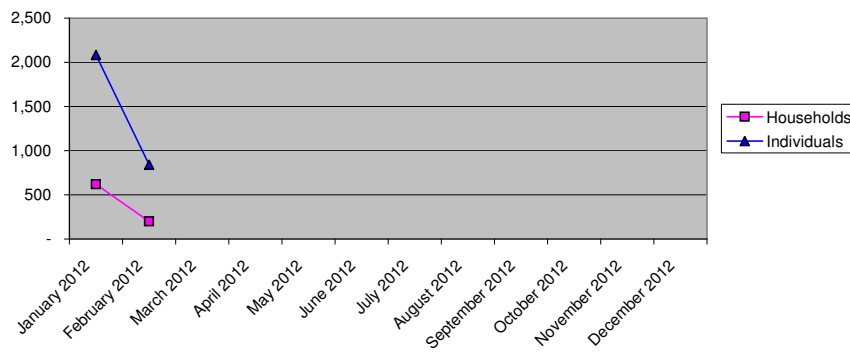
Date	Newly Arrived Individuals	Pre-registered by ARRA *
Wed 01 Feb 12	193	193
Thu 02 Feb 12	86	86
Fri 03 Feb 12		**
Sat 04 Feb 12	33	33
Sun 05 Feb 12		**
Mon 06 Feb 12	81	81
Tue 07 Feb 12	76	76
Wed 08 Feb 12	82	82
Thu 09 Feb 12	57	57
Fri 10 Feb 12	70	70
Sat 11 Feb 12		**
Sun 12 Feb 12		**
Mon 13 Feb 12	164	164
Tue 14 Feb 12		
Wed 15 Feb 12		
Thu 16 Feb 12		
Fri 17 Feb 12		
Sat 18 Feb 12		
Sun 19 Feb 12		
Mon 20 Feb 12		
Tue 21 Feb 12		
Wed 22 Feb 12		
Thu 23 Feb 12		
Fri 24 Feb 12		
Sat 25 Feb 12		
Sun 26 Feb 12		
Mon 27 Feb 12		
Tue 28 Feb 12		
Wed 29 Feb 12		
<b>TOTAL THIS MONTH</b>	<b>842</b>	<b>842</b>

\* Pre-registration by ARRA is not necessarily done on the day of Arrival

\*\* Represent days when ARRA was not receiving Asylum seekers.

The number of those received during these days is include in the figure of next receiving day.

**Figure 1.3 - Pre-Registration Trends in 2012 (Reception Centre/ ARRA)**



Note: these are registration volumes by month, not cumulative figures.

**Table 1.3 - Pre-Registration Trends in 2012 (Reception Centre/ ARRA)**

Month	Households	Individuals
January 2012	621	2,084
February 2012	199	842
March 2012		
April 2012		
May 2012		
June 2012		
July 2012		
August 2012		
September 2012		
October 2012		
November 2012		
December 2012		
<b>Total</b>	<b>820</b>	<b>2,926</b>

**Table 1.4 - Registration & Relocation Trends in Transit Centre up to date**

Stage of Registration & Relocation	Individuals
Total individuals fully registered so far this month	618
Total individuals relocated to camps so far this month	1885
Total individuals fully processed (have ration card), but not yet relocated	115

## Camp population by Age and Sex breakdown

As of 13 Feb 2012

Table 2.1 - ALL CAMPS Demographic Breakdown\*

Age Group	Sex				Total	
	Male	(%)	Female	(%)	Total	(%)
0 - 4	15,698	10.9%	15,204	10.5%	30,902	21.4%
5 - 11	24,539	17.0%	23,693	16.4%	48,232	33.4%
12 - 17	9,474	6.6%	8,522	5.9%	17,996	12.4%
18 - 59	16,144	11.2%	27,920	19.3%	44,064	30.5%
60 and above	1,739	1.2%	1,688	1.2%	3,427	2.4%
<b>Total ALL CAMPS</b>	<b>67,594</b>	<b>46.7%</b>	<b>77,027</b>	<b>53.3%</b>	<b>144,621</b>	<b>100.0%</b>

\* These total figures apply only to camps, not to the Transit Centre or Reception Centre

Figure 2.1 - ALL CAMPS Demographic Breakdown\*

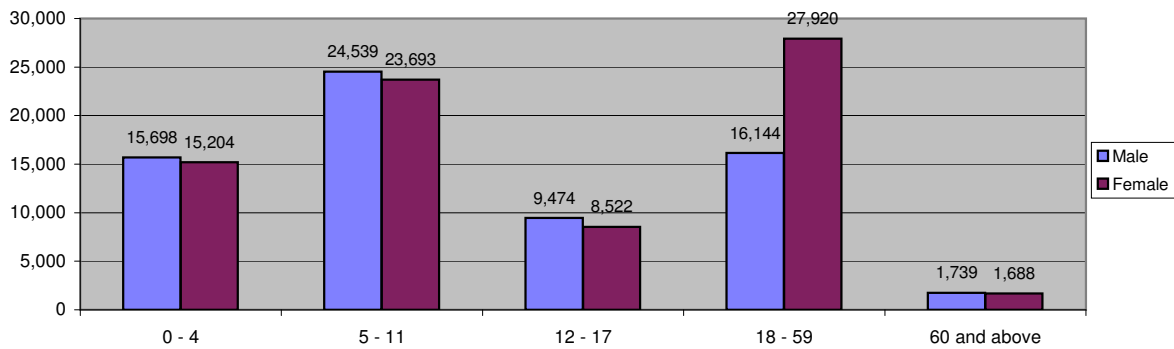
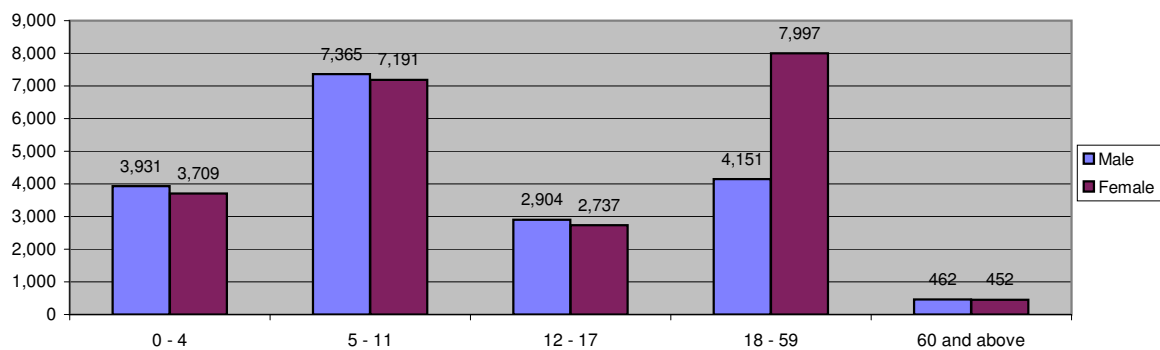


Table 2.2 - Melkadida Camp Demographic Breakdown

911

Age Group	Sex				Total	
	Male	(%)	Female	(%)	Total	(%)
0 - 4	3,931	9.6%	3,709	9.1%	7,640	18.7%
5 - 11	7,365	18.0%	7,191	17.6%	14,556	35.6%
12 - 17	2,904	7.1%	2,737	6.7%	5,641	13.8%
18 - 59	4,151	10.1%	7,997	19.6%	12,148	29.7%
60 and above	462	1.1%	452	1.1%	914	2.2%
<b>Total Malkadida</b>	<b>18,813</b>	<b>46.0%</b>	<b>22,086</b>	<b>54.0%</b>	<b>40,899</b>	<b>100.0%</b>

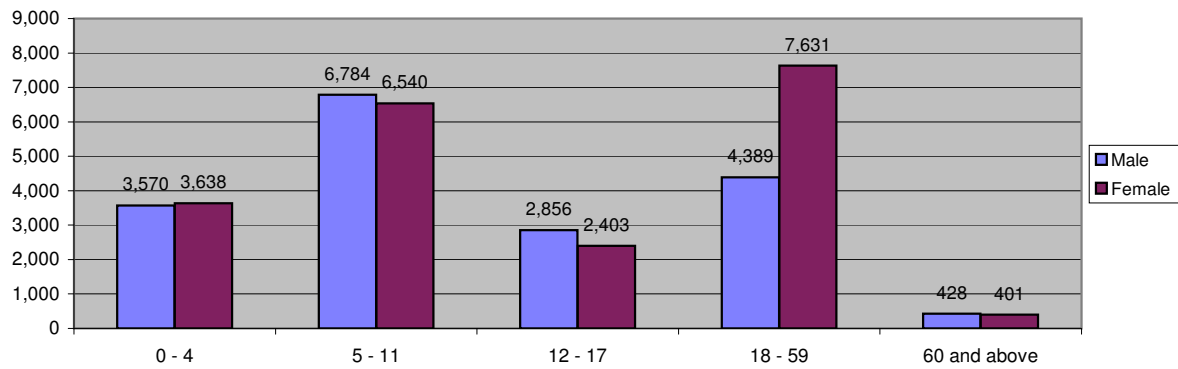
Figure 2.2 - Melkadida Camp Demographic Breakdown\*



**Table 2.3 - Bokolmanyo Camp Demographic Breakdown**

Age Group	Sex				Total	
	Male	(%)	Female	(%)	Total	(%)
0 - 4	3,570	9.2%	3,638	9.4%	7,208	18.7%
5 - 11	6,784	17.6%	6,540	16.9%	13,324	34.5%
12 - 17	2,856	7.4%	2,403	6.2%	5,259	13.6%
18 - 59	4,389	11.4%	7,631	19.7%	12,020	31.1%
60 and above	428	1.1%	401	1.0%	829	2.1%
<b>Total Bokolmanyo</b>	<b>18,027</b>	<b>46.7%</b>	<b>20,613</b>	<b>53.3%</b>	<b>38,640</b>	<b>100.0%</b>

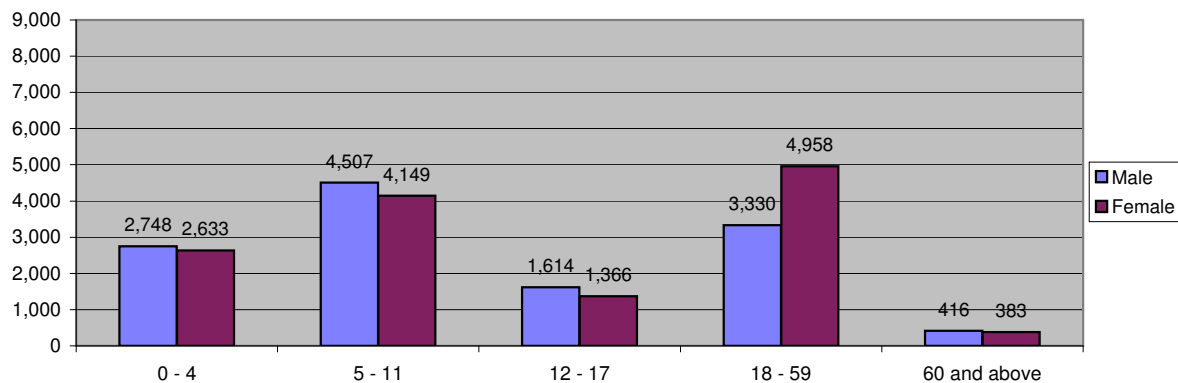
**Figure 2.3 - Bokolmanyo Camp Demographic Breakdown\***



**Table 2.4 - Kobe Camp Demographic Breakdown**

Age Group	Sex				Total	
	Male	(%)	Female	(%)	Total	(%)
0 - 4	2,748	10.5%	2,633	10.1%	5,381	20.6%
5 - 11	4,507	17.3%	4,149	15.9%	8,656	33.2%
12 - 17	1,614	6.2%	1,366	5.2%	2,980	11.4%
18 - 59	3,330	12.8%	4,958	19.0%	8,288	31.7%
60 and above	416	1.6%	383	1.5%	799	3.1%
<b>Total Kobe</b>	<b>12,615</b>	<b>48.3%</b>	<b>13,489</b>	<b>51.7%</b>	<b>26,104</b>	<b>100.0%</b>

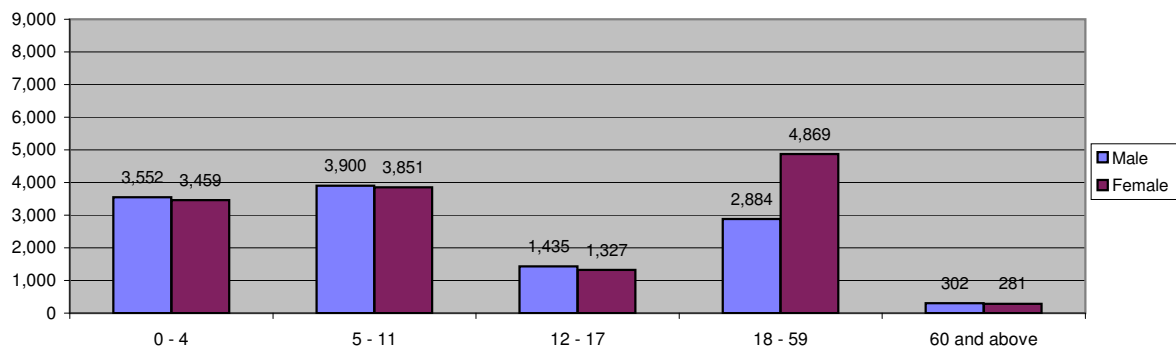
**Figure 2.4 - Kobe Camp Demographic Breakdown\***



**Table 2.5 - Hilaweyn Camp Demographic Breakdown**

Age Group	Sex				Total	
	Male	(%)	Female	(%)	Total	(%)
0 - 4	3,552	13.7%	3,459	13.4%	7,011	27.1%
5 - 11	3,900	15.1%	3,851	14.9%	7,751	30.0%
12 - 17	1,435	5.5%	1,327	5.1%	2,762	10.7%
18 - 59	2,884	11.2%	4,869	18.8%	7,753	30.0%
60 and above	302	1.2%	281	1.1%	583	2.3%
<b>Total Hilaweyn</b>	<b>12,073</b>	<b>46.7%</b>	<b>13,787</b>	<b>53.3%</b>	<b>25,860</b>	<b>100.0%</b>

**Figure 2.5 - Hilaweyn Camp Demographic Breakdown\***



**Table 2.6 - Buramino Camp Demographic Breakdown**

Age Group	Sex				Total	
	Male	(%)	Female	(%)	Total	(%)
0 - 4	1,897	14.5%	1,765	13.5%	3,662	27.9%
5 - 11	1,983	15.1%	1,962	15.0%	3,945	30.1%
12 - 17	665	5.1%	689	5.3%	1,354	10.3%
18 - 59	1,390	10.6%	2,465	18.8%	3,855	29.4%
60 and above	131	1.0%	171	1.3%	302	2.3%
<b>Total Buramino</b>	<b>6,066</b>	<b>46.2%</b>	<b>7,052</b>	<b>53.8%</b>	<b>13,118</b>	<b>100.0%</b>

**Figure 2.6 - Buramino Camp Demographic Breakdown\***

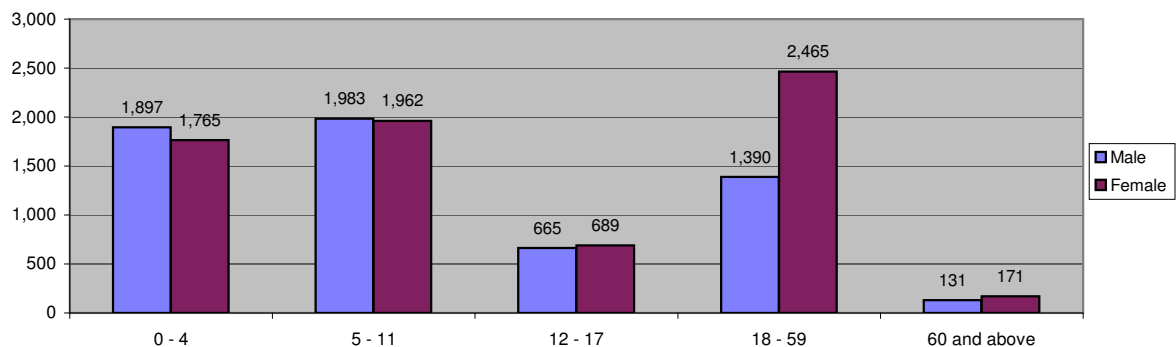


Table 2.7 - Dollo Ado Transit Centre Demographic Breakdown

Age Group	Sex				Total	
	Male	(%)	Female	(%)	Total	(%)
0 - 4	14	11.7%	22	18.3%	36	30.0%
5 - 11	2	1.7%	19	15.8%	21	17.5%
12 - 17	15	12.5%	7	5.8%	22	18.3%
18 - 59	21	17.5%	20	16.7%	41	34.2%
60 and above	0	0.0%	0	0.0%	0	0.0%
<b>Total TransitCentre</b>	<b>52</b>	<b>43.3%</b>	<b>68</b>	<b>56.7%</b>	<b>120</b>	<b>100.0%</b>

Figure 2.7 - Dollo Ado Transit Centre Demographic Breakdown

