

Dollo Ado Population Statistical Report

As of 31 Dec 2011

Figure 1.1 - Total Refugee Population in Dollo Ado

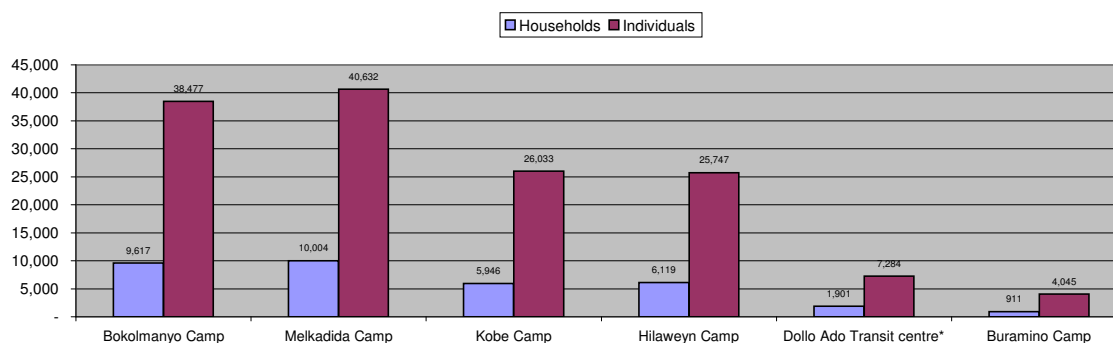


Table 1.1 - Total Refugee Population in Dollo Ado

Site/Camp	Current Total		As of 31 Dec 2010		Arrivals in 2011	
	Households	Individuals	Households	Individuals	Households	Individuals
Bokolmany Camp	9,617	38,477	3,988	14,988	5,629	23,489
Melkadida Camp	10,004	40,632	6,452	25,491	3,552	15,141
Kobe Camp	5,946	26,033	n/a	n/a	5,946	26,033
Hilaweyn Camp	6,119	25,747	n/a	n/a	6,119	25,747
Buramino Camp	911	4,045	n/a	n/a	911	4,045
Camp Sub-Total	32,597	134,934	10,440	40,479	21,246	90,410
Dollo Ado Transit centre*	1,901	7,284	n/a	n/a	1,901	7,284
Temporary Locations Sub-Total	1,901	7,284	n/a	n/a	1,901	7,284
GRAND TOTAL ALL LOCATIONS	34,498	142,218	10,440	40,479	23,147	97,694

* Individuals currently in the Transit Centre. All new arrivals are registered at the Transit Centre and are subsequently relocated to the camps.

Figure 1.2 - New Arrivals at Reception Centre During Current Month (Weekly)

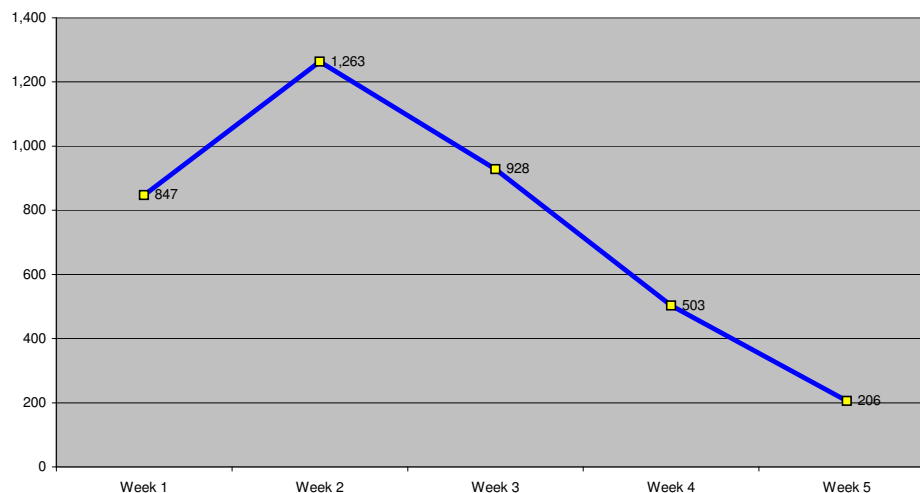


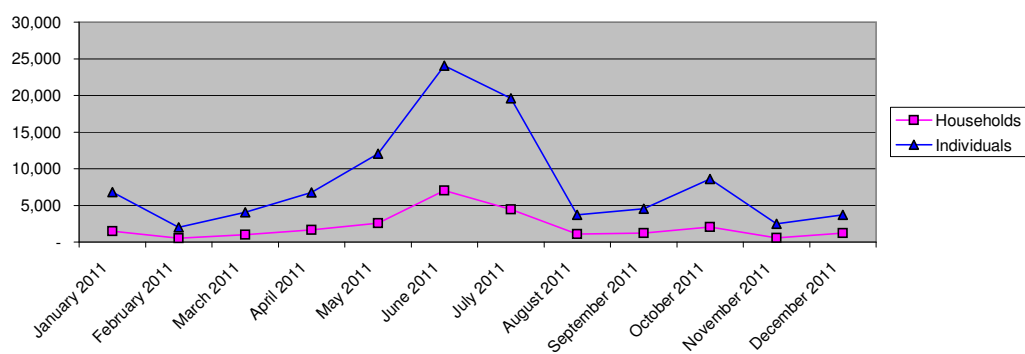
Table 1.2 - Daily New Arrivals and Pre-registration by ARRA at the Reception Centre

Date	Newly Arrived Individuals	Pre-registered by ARRA *
Thu 01 Dec 11	140	131
Fri 02 Dec 11	152	143
Sat 03 Dec 11		**
Sun 04 Dec 11		**
Mon 05 Dec 11	151	136
Tue 06 Dec 11	339	336
Wed 07 Dec 11	65	65
Thu 08 Dec 11	70	70
Fri 09 Dec 11	204	192
Sat 10 Dec 11		**
Sun 11 Dec 11		**
Mon 12 Dec 11	543	539
Tue 13 Dec 11	251	240
Wed 14 Dec 11	195	189
Thu 15 Dec 11	62	58
Fri 16 Dec 11	106	99
Sat 17 Dec 11	90	90
Sun 18 Dec 11		**
Mon 19 Dec 11	298	291
Tue 20 Dec 11	180	167
Wed 21 Dec 11	192	182
Thu 22 Dec 11	171	160
Fri 23 Dec 11	76	76
Sat 24 Dec 11		**
Sun 25 Dec 11		**
Mon 26 Dec 11	72	198
Tue 27 Dec 11	46	44
Wed 28 Dec 11	138	124
Thu 29 Dec 11	81	81
Fri 30 Dec 11	84	79
Sat 31 Dec 11	41	41
TOTAL THIS MONTH	3,747	3,731

* Pre-registration by ARRA is not necessarily done on the day of Arrival

** Represent days when ARRA was not receiving Asylum seekers.

The number of those received during these days is include in the figure of next receiving day.

Figure 1.3 - Pre-Registration Trends in 2011 (Reception Centre/ ARRA)


Note: these are registration volumes by month, not cumulative figures.

Table 1.3 - Pre-Registration Trends in 2011 (Reception Centre/ ARRA)

Month	Households	Individuals
January 2011	1,502	6,792
February 2011	527	2,016
March 2011	1,019	4,072
April 2011	1,650	6,749
May 2011	2,587	12,045
June 2011	7,030	24,042
July 2011	4,463	19,610
August 2011	1,072	3,691
September 2011	1,215	4,563
October 2011	2,036	8,584
November 2011	553	2,485
December 2011	1,201	3,731
Total	24,855	98,380

Table 1.4 - Registration & Relocation Trends in Transit Centre up to date

Stage of Registration & Relocation	Individuals
Total individuals fully registered so far this month	3,878
Total individuals relocated to camps so far this month	4,249
Total individuals fully processed (have ration card), but not yet relocated	7,110

Camp population by Age and Sex breakdown

As of 31 Dec 2011

Table 2.1 - ALL CAMPS Demographic Breakdown*

Age Group	Sex				Total	
	Male	(%)	Female	(%)	Total	(%)
0 - 4	17,327	12.7%	16,885	12.4%	34,212	25.1%
5 - 11	21,597	15.9%	20,598	15.1%	42,195	31.0%
12 - 17	7,952	5.8%	7,257	5.3%	15,209	11.2%
18 - 59	14,549	10.7%	25,646	18.8%	40,195	29.5%
60 and above	2,730	2.0%	1,541	1.1%	4,271	3.1%
Total ALL CAMPS	64,155	47.1%	71,927	52.9%	136,082	100.0%

* These total figures apply only to camps, not to the Transit Centre or Reception Centre

Figure 2.1 - ALL CAMPS Demographic Breakdown*

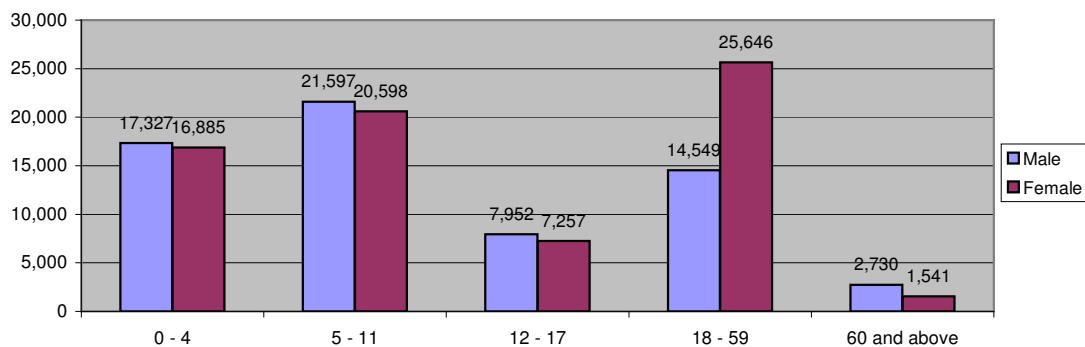


Table 2.2 - Melkadida Camp Demographic Breakdown

Age Group	Sex				Total	
	Male	(%)	Female	(%)	Total	(%)
0 - 4	5,064	12.5%	4,871	12.0%	9,935	24.5%
5 - 11	6,819	16.8%	6,536	16.1%	13,355	32.9%
12 - 17	2,395	5.9%	2,343	5.8%	4,738	11.7%
18 - 59	3,960	9.7%	7,769	19.1%	11,729	28.9%
60 and above	438	1.1%	437	1.1%	875	2.2%
Total Malkadida	18,676	46.0%	21,956	54.0%	40,632	100.0%

Figure 2.2 - Melkadida Camp Demographic Breakdown*

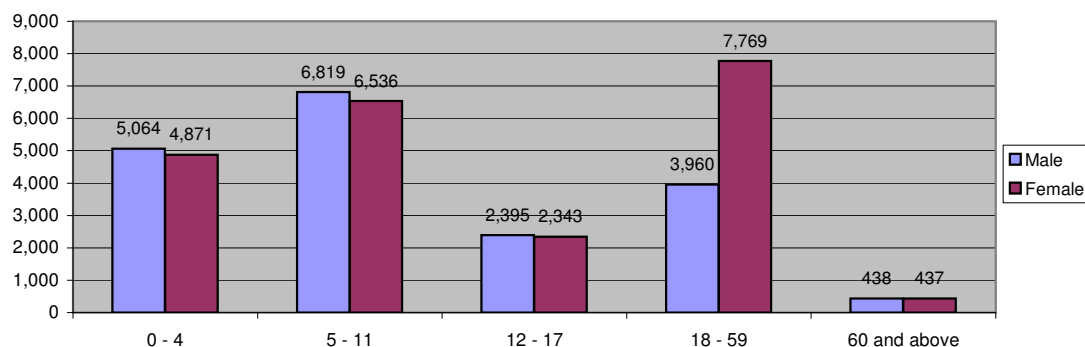


Table 2.3 - Bokolmanyo Camp Demographic Breakdown

Age Group	Sex				Total	
	Male	(%)	Female	(%)	Total	(%)
0 - 4	4,668	12.1%	4,695	12.2%	9,363	24.3%
5 - 11	6,172	16.0%	5,914	15.4%	12,086	31.4%
12 - 17	2,531	6.6%	2,158	5.6%	4,689	12.2%
18 - 59	4,152	10.8%	7,383	19.2%	11,535	30.0%
60 and above	412	1.1%	391	1.0%	803	2.1%
Total Bokolmanyo	17,935	46.6%	20,541	53.4%	38,476	100.0%

Figure 2.3 - Bokolmanyo Camp Demographic Breakdown*

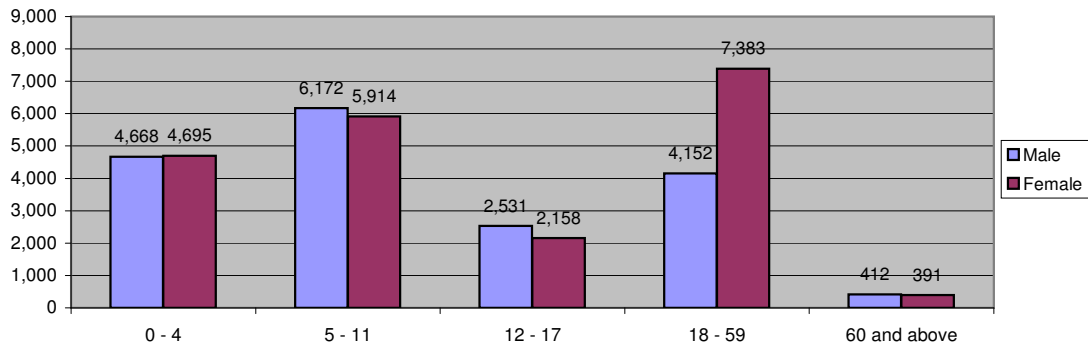


Table 2.4 - Kobe Camp Demographic Breakdown

Age Group	Sex				Total	
	Male	(%)	Female	(%)	Total	(%)
0 - 4	3,457	13.3%	3,307	12.7%	6,764	26.0%
5 - 11	4,079	15.7%	3,720	14.3%	7,799	30.0%
12 - 17	1,429	5.5%	1,208	4.6%	2,637	10.1%
18 - 59	3,192	12.3%	4,853	18.6%	8,045	30.9%
60 and above	405	1.6%	383	1.5%	788	3.0%
Total Kobe	12,562	48.3%	13,471	51.7%	26,033	100.0%

Figure 2.4 - Kobe Camp Demographic Breakdown*

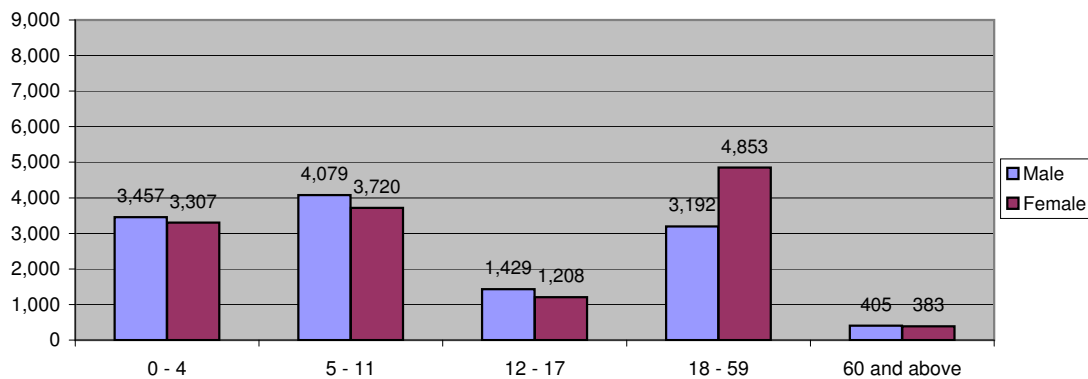


Table 2.5 - Hilaweyn Camp Demographic Breakdown

Age Group	Sex				Total	
	Male	(%)	Female	(%)	Total	(%)
0 - 4	3,550	13.8%	3,460	13.4%	7,010	27.2%
5 - 11	3,884	15.1%	3,841	14.9%	7,725	30.0%
12 - 17	1,419	5.5%	1,311	5.1%	2,730	10.6%
18 - 59	2,847	11.1%	4,862	18.9%	7,709	29.9%
60 and above	293	1.1%	280	1.1%	573	2.2%
Total Hilaweyn	11,993	46.6%	13,754	53.4%	25,747	100.0%

Figure 2.5 - Hilaweyn Camp Demographic Breakdown*

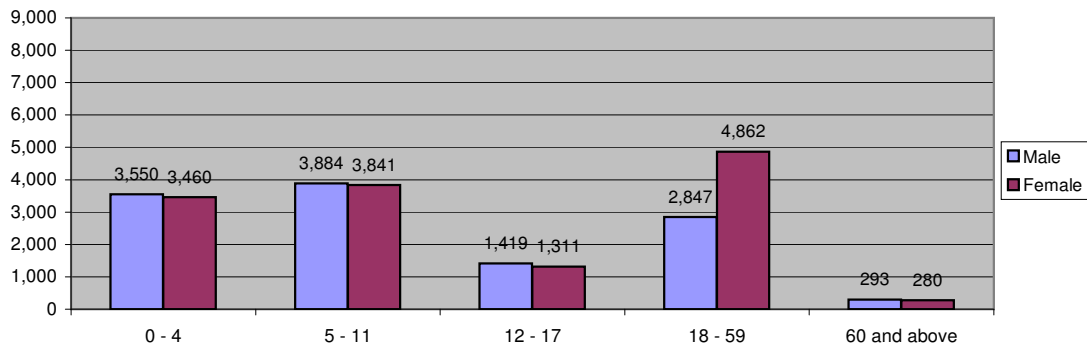


Table 2.6 - Buramino Camp Demographic Breakdown

Age Group	Sex				Total	
	Male	(%)	Female	(%)	Total	(%)
0 - 4	588	11.3%	552	10.6%	1,140	21.9%
5 - 11	643	12.4%	587	11.3%	1,230	23.7%
12 - 17	178	3.4%	237	4.6%	415	8.0%
18 - 59	398	7.7%	779	15.0%	1,177	22.7%
60 and above	1,182	22.8%	50	1.0%	1,232	23.7%
Total Buramino	2,989	57.5%	2,205	42.5%	5,194	100.0%

Figure 2.6 - Buramino Camp Demographic Breakdown*

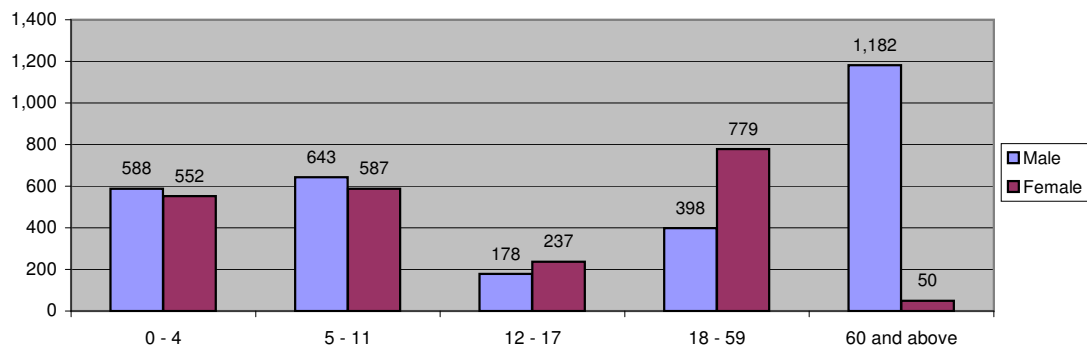


Table 2.7 - Dollo Ado Transit centre Demographic Breakdown

Age Group	Sex				Total	
	Male	(%)	Female	(%)	Total	(%)
0 - 4	1,024	14.1%	993	13.6%	2,017	27.7%
5 - 11	1,016	13.9%	1,069	14.7%	2,085	28.6%
12 - 17	380	5.2%	388	5.3%	768	10.5%
18 - 59	892	12.2%	1,339	18.4%	2,231	30.6%
60 and above	83	1.1%	100	1.4%	183	2.5%
Total TransitCentre	3,395	46.6%	3,889	53.4%	7,284	100.0%

Figure 2.7 - Dollo Ado Transit centre Demographic Breakdown

