

Dollo Ado Population Statistical Report

As of 30 Dec 2011

Figure 1.1 - Total Refugee Population in Dollo Ado

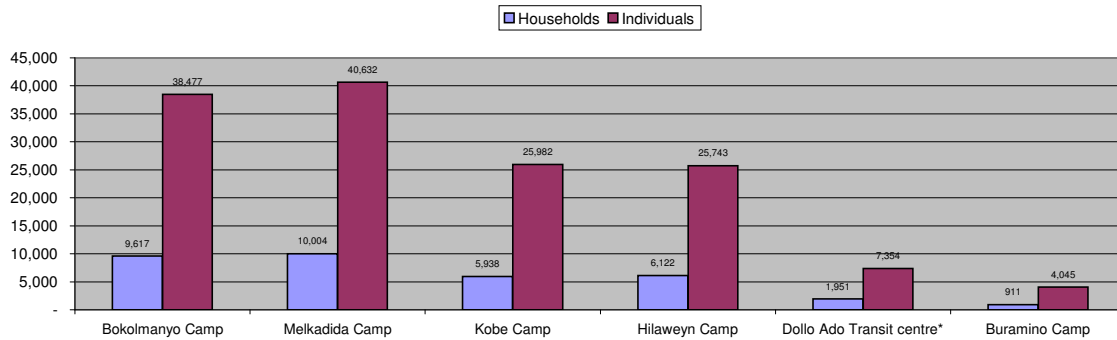


Table 1.1 - Total Refugee Population in Dollo Ado

Site/Camp	Current Total		As of 31 Dec 2010		Arrivals in 2011	
	Households	Individuals	Households	Individuals	Households	Individuals
Bokolmanyo Camp	9,617	38,477	3,988	14,988	5,629	23,489
Melkadida Camp	10,004	40,632	6,452	25,491	3,552	15,141
Kobe Camp	5,938	25,982	n/a	n/a	5,938	25,982
Hilaweyn Camp	6,122	25,743	n/a	n/a	6,122	25,743
Buramino Camp	911	4,045	n/a	n/a	911	4,045
Camp Sub-Total	32,592	134,879	10,440	40,479	21,241	90,355
Dollo Ado Transit centre*	1,951	7,354	n/a	n/a	1,951	7,354
Temporary Locations Sub-Total	1,951	7,354	n/a	n/a	1,951	7,354
GRAND TOTAL ALL LOCATIONS	34,543	142,233	10,440	40,479	23,192	97,709

* Individuals currently in the Transit Centre. All new arrivals are registered at the Transit Centre and are subsequently relocated to the camps.

Figure 1.2 - New Arrivals at Reception Centre During Current Month (Weekly)

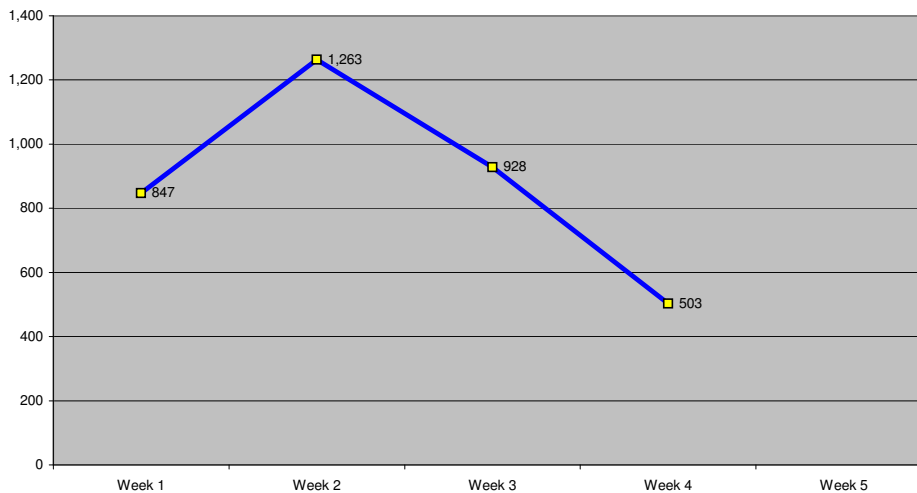


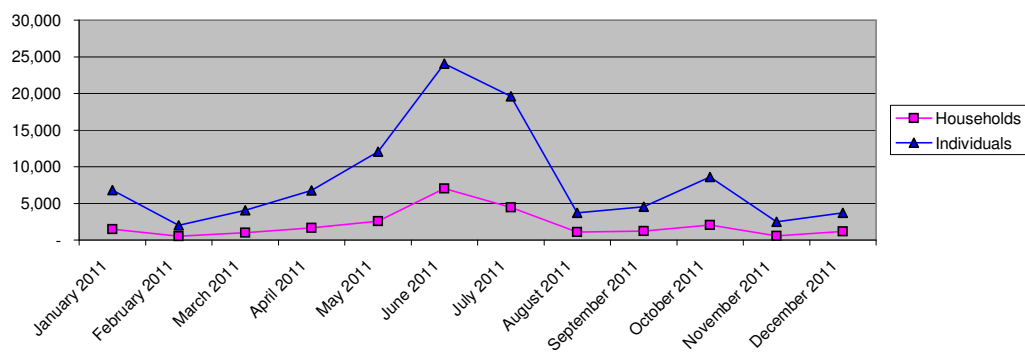
Table 1.2 - Daily New Arrivals and Pre-registration by ARRA at the Reception Centre

Date	Newly Arrived Individuals	Pre-registered by ARRA *
Thu 01 Dec 11	140	131
Fri 02 Dec 11	152	143
Sat 03 Dec 11		**
Sun 04 Dec 11		**
Mon 05 Dec 11	151	136
Tue 06 Dec 11	339	336
Wed 07 Dec 11	65	65
Thu 08 Dec 11	70	70
Fri 09 Dec 11	204	192
Sat 10 Dec 11		**
Sun 11 Dec 11		**
Mon 12 Dec 11	543	539
Tue 13 Dec 11	251	240
Wed 14 Dec 11	195	189
Thu 15 Dec 11	62	58
Fri 16 Dec 11	106	99
Sat 17 Dec 11	90	90
Sun 18 Dec 11		**
Mon 19 Dec 11	298	291
Tue 20 Dec 11	180	167
Wed 21 Dec 11	192	182
Thu 22 Dec 11	171	160
Fri 23 Dec 11	76	76
Sat 24 Dec 11		**
Sun 25 Dec 11		**
Mon 26 Dec 11	72	198
Tue 27 Dec 11	46	44
Wed 28 Dec 11	138	124
Thu 29 Dec 11	81	81
Fri 30 Dec 11	84	79
Sat 31 Dec 11		
TOTAL THIS MONTH	3,706	3,690

* Pre-registration by ARRA is not necessarily done on the day of Arrival

** Represent days when ARRA was not receiving Asylum seekers.

The number of those received during these days is include in the figure of next receiving day.

Figure 1.3 - Pre-Registration Trends in 2011 (Reception Centre/ ARRA)


Note: these are registration volumes by month, not cumulative figures.

Table 1.3 - Pre-Registration Trends in 2011 (Reception Centre/ ARRA)

Month	Households	Individuals
January 2011	1,502	6,792
February 2011	527	2,016
March 2011	1,019	4,072
April 2011	1,650	6,749
May 2011	2,587	12,045
June 2011	7,030	24,042
July 2011	4,463	19,610
August 2011	1,072	3,691
September 2011	1,215	4,563
October 2011	2,036	8,584
November 2011	553	2,485
December 2011	1,182	3,690
Total	24,836	98,339

Table 1.4 - Registration & Relocation Trends in Transit Centre up to date

Stage of Registration & Relocation	Individuals
Total individuals fully registered so far this month	3,877
Total individuals relocated to camps so far this month	4,249
Total individuals fully processed (have ration card), but not yet relocated	7,180

Camp population by Age and Sex breakdown

As of 30 Dec 2011

Table 2.1 - ALL CAMPS Demographic Breakdown*

Age Group	Sex				Total	
	Male	(%)	Female	(%)	Total	(%)
0 - 4	17,330	12.7%	16,898	12.4%	34,228	25.2%
5 - 11	21,579	15.9%	20,583	15.1%	42,162	31.0%
12 - 17	7,946	5.8%	7,248	5.3%	15,194	11.2%
18 - 59	14,530	10.7%	25,645	18.9%	40,175	29.5%
60 and above	2,726	2.0%	1,542	1.1%	4,268	3.1%
Total ALL CAMPS	64,111	47.1%	71,916	52.9%	136,027	100.0%

* These total figures apply only to camps, not to the Transit Centre or Reception Centre

Figure 2.1 - ALL CAMPS Demographic Breakdown*

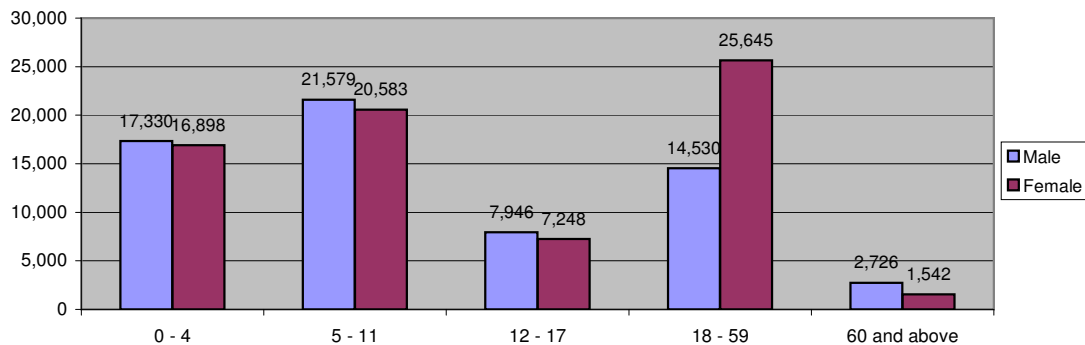


Table 2.2 - Melkadida Camp Demographic Breakdown

Age Group	Sex				Total	
	Male	(%)	Female	(%)	Total	(%)
0 - 4	5,064	12.5%	4,871	12.0%	9,935	24.5%
5 - 11	6,819	16.8%	6,536	16.1%	13,355	32.9%
12 - 17	2,395	5.9%	2,343	5.8%	4,738	11.7%
18 - 59	3,960	9.7%	7,769	19.1%	11,729	28.9%
60 and above	438	1.1%	437	1.1%	875	2.2%
Total Malkadida	18,676	46.0%	21,956	54.0%	40,632	100.0%

Figure 2.2 - Melkadida Camp Demographic Breakdown*

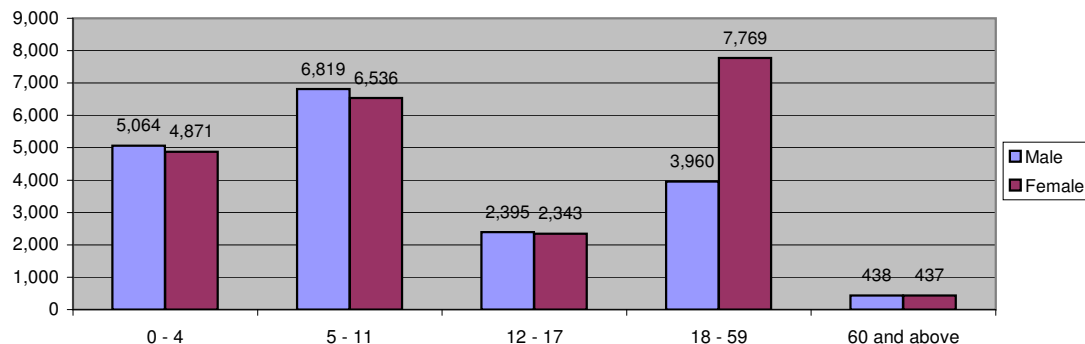


Table 2.3 - Bokolmanyo Camp Demographic Breakdown

Age Group	Sex				Total	
	Male	(%)	Female	(%)	Total	(%)
0 - 4	4,668	12.1%	4,695	12.2%	9,363	24.3%
5 - 11	6,172	16.0%	5,914	15.4%	12,086	31.4%
12 - 17	2,531	6.6%	2,158	5.6%	4,689	12.2%
18 - 59	4,152	10.8%	7,383	19.2%	11,535	30.0%
60 and above	412	1.1%	391	1.0%	803	2.1%
Total Bokolmanyo	17,935	46.6%	20,541	53.4%	38,476	100.0%

Figure 2.3 - Bokolmanyo Camp Demographic Breakdown*

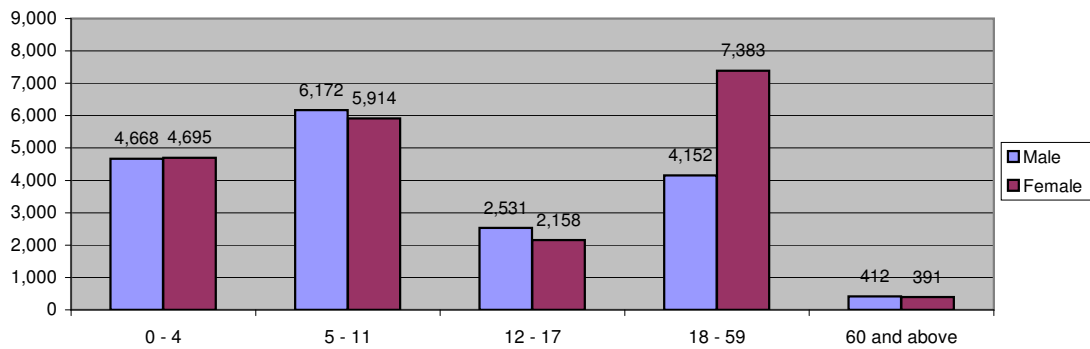


Table 2.4 - Kobe Camp Demographic Breakdown

Age Group	Sex				Total	
	Male	(%)	Female	(%)	Total	(%)
0 - 4	3,461	13.3%	3,323	12.8%	6,784	26.1%
5 - 11	4,061	15.6%	3,705	14.3%	7,766	29.9%
12 - 17	1,423	5.5%	1,199	4.6%	2,622	10.1%
18 - 59	3,173	12.2%	4,854	18.7%	8,027	30.9%
60 and above	401	1.5%	382	1.5%	783	3.0%
Total Kobe	12,519	48.2%	13,463	51.8%	25,982	100.0%

Figure 2.4 - Kobe Camp Demographic Breakdown*

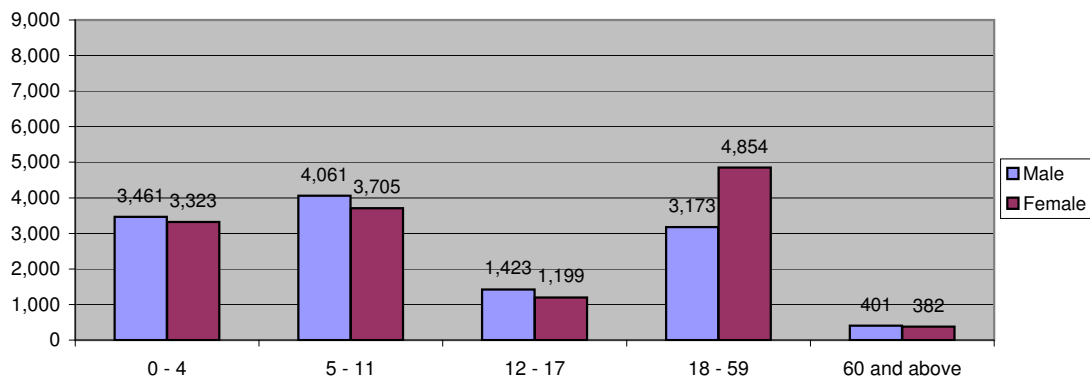


Table 2.5 - Hilaweyn Camp Demographic Breakdown

Age Group	Sex				Total	
	Male	(%)	Female	(%)	Total	(%)
0 - 4	3,549	13.8%	3,457	13.4%	7,006	27.2%
5 - 11	3,884	15.1%	3,841	14.9%	7,725	30.0%
12 - 17	1,419	5.5%	1,311	5.1%	2,730	10.6%
18 - 59	2,847	11.1%	4,860	18.9%	7,707	29.9%
60 and above	293	1.1%	282	1.1%	575	2.2%
Total Hilaweyn	11,992	46.6%	13,751	53.4%	25,743	100.0%

Figure 2.5 - Hilaweyn Camp Demographic Breakdown*

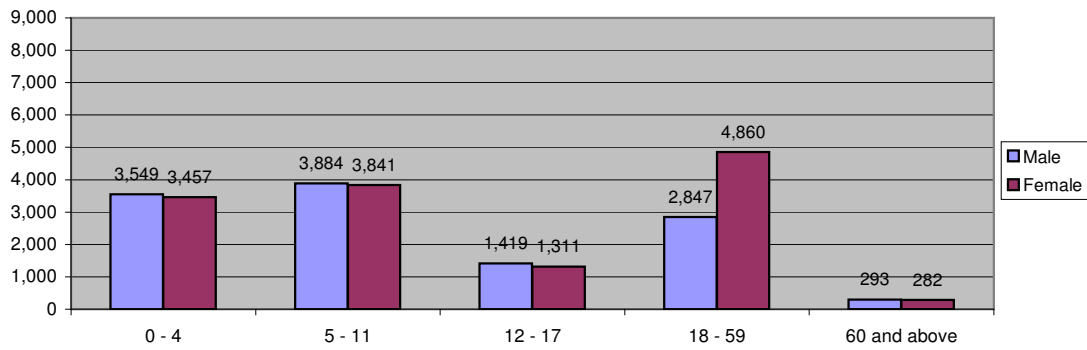


Table 2.6 - Buramino Camp Demographic Breakdown

Age Group	Sex				Total	
	Male	(%)	Female	(%)	Total	(%)
0 - 4	588	11.3%	552	10.6%	1,140	21.9%
5 - 11	643	12.4%	587	11.3%	1,230	23.7%
12 - 17	178	3.4%	237	4.6%	415	8.0%
18 - 59	398	7.7%	779	15.0%	1,177	22.7%
60 and above	1,182	22.8%	50	1.0%	1,232	23.7%
Total Buramino	2,989	57.5%	2,205	42.5%	5,194	100.0%

Figure 2.6 - Buramino Camp Demographic Breakdown*

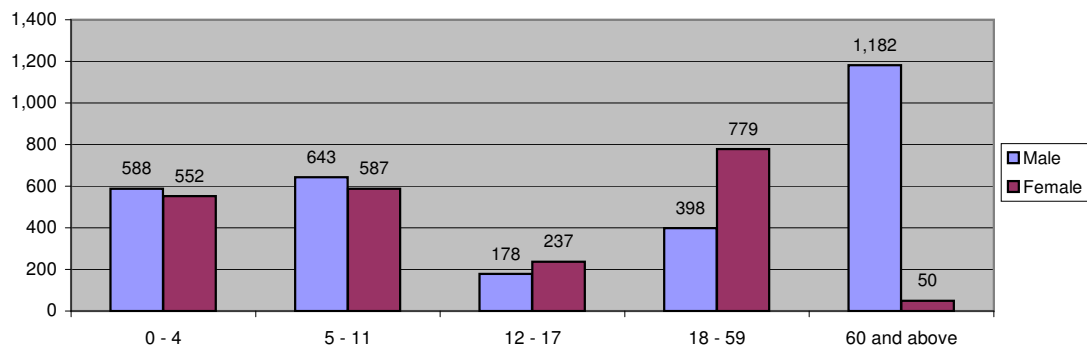


Table 2.7 - Dollo Ado Transit centre Demographic Breakdown

Age Group	Sex				Total	
	Male	(%)	Female	(%)	Total	(%)
0 - 4	1,030	14.0%	999	13.6%	2,029	27.6%
5 - 11	1,017	13.8%	1,071	14.6%	2,088	28.4%
12 - 17	385	5.2%	393	5.3%	778	10.6%
18 - 59	925	12.6%	1,347	18.3%	2,272	30.9%
60 and above	86	1.2%	101	1.4%	187	2.5%
Total TransitCentre	3,443	46.8%	3,911	53.2%	7,354	100.0%

Figure 2.7 - Dollo Ado Transit centre Demographic Breakdown

