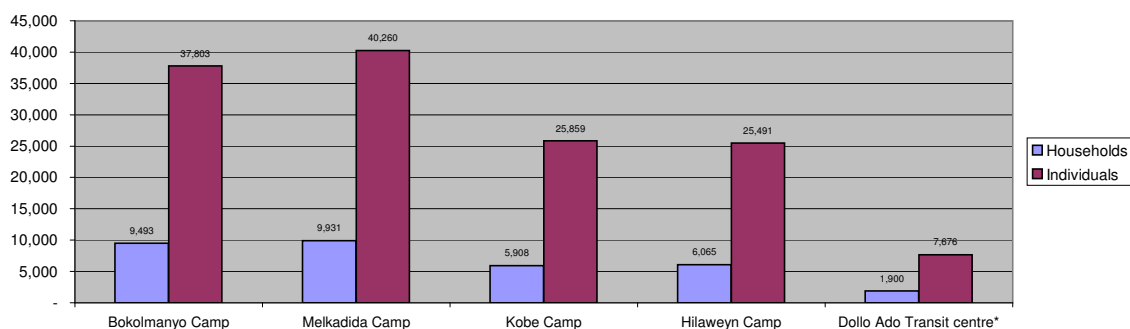


## Dollo Ado Population Statistical Report

*As of 24 Nov 2011*

**Figure 1.1 - Total Refugee Population in Dollo Ado**

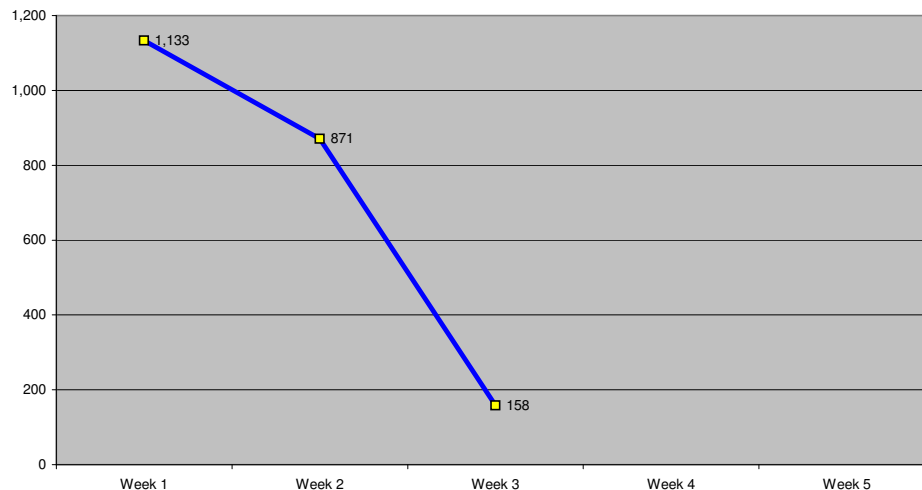


**Table 1.1 - Total Refugee Population in Dollo Ado**

Site/Camp	Current Total		As of 31 Dec 2010		Arrivals in 2011	
	Households	Individuals	Households	Individuals	Households	Individuals
Bokolmanyo Camp	9,493	37,803	3,988	14,988	5,505	22,815
Melkadida Camp	9,931	40,260	6,452	25,491	3,479	14,769
Kobe Camp	5,908	25,859	n/a	n/a	5,908	25,859
Hilaweyn Camp	6,065	25,491	n/a	n/a	6,065	25,491
<b>Camp Sub-Total</b>	<b>31,397</b>	<b>129,413</b>	<b>10,440</b>	<b>40,479</b>	<b>20,957</b>	<b>88,934</b>
Dollo Ado Transit centre*	1,900	7,676	n/a	n/a	1,900	7,676
<b>Temporary Locations Sub-Total</b>	<b>1,900</b>	<b>7,676</b>	<b>n/a</b>	<b>n/a</b>	<b>1,900</b>	<b>7,676</b>
<b>GRAND TOTAL ALL LOCATIONS</b>	<b>33,297</b>	<b>137,089</b>	<b>10,440</b>	<b>40,479</b>	<b>22,857</b>	<b>96,610</b>

\* Individuals currently in the Transit Centre. All new arrivals are registered at the Transit Centre and are subsequently relocated to the camps.

**Figure 1.2 - New Arrivals at Reception Centre During Current Month (Weekly)**



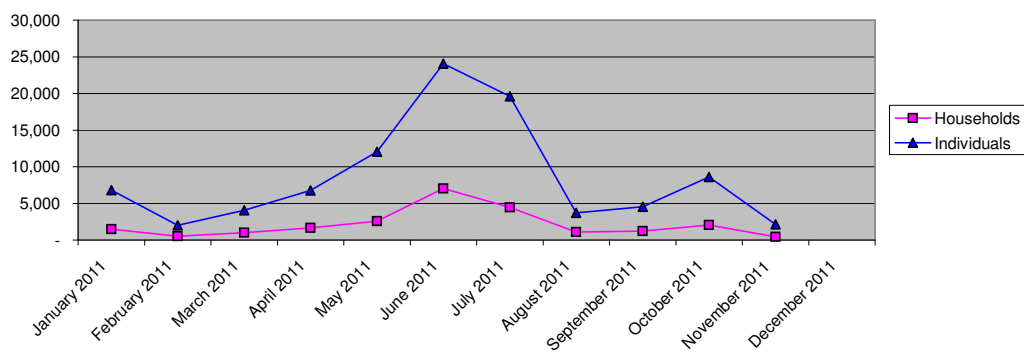
**Table 1.2 - Daily New Arrivals and Pre-registration by ARRA at the Reception Centre**

Date	Newly Arrived Individuals	Pre-registered by ARRA *
Tue 01 Nov 11	151	151
Wed 02 Nov 11	257	254
Thu 03 Nov 11	189	185
Fri 04 Nov 11	247	237
Sat 05 Nov 11		**
Sun 06 Nov 11		**
Mon 07 Nov 11	289	257
Tue 08 Nov 11	397	378
Wed 09 Nov 11	158	149
Thu 10 Nov 11	92	86
Fri 11 Nov 11	224	213
Sat 12 Nov 11		**
Sun 13 Nov 11		**
Mon 14 Nov 11		**
Tue 15 Nov 11	79	73
Wed 16 Nov 11	48	48
Thu 17 Nov 11		**
Fri 18 Nov 11		**
Sat 19 Nov 11		**
Sun 20 Nov 11		**
Mon 21 Nov 11	31	31
Tue 22 Nov 11	49	49
Wed 23 Nov 11	11	11
Thu 24 Nov 11	19	12
Fri 25 Nov 11		
Sat 26 Nov 11		
Sun 27 Nov 11		
Mon 28 Nov 11		
Tue 29 Nov 11		
Wed 30 Nov 11		
<b>TOTAL THIS MONTH</b>	<b>2,241</b>	<b>2,134</b>

\* Pre-registration by ARRA is not necessarily done on the day of Arrival

\*\* Represent days when ARRA was not receiving Asylum seekers.

The number of those received during these days is include in the figure of next receiving day.

**Figure 1.3 - Pre-Registration Trends in 2011 (Reception Centre/ ARRA)**


Note: these are registration volumes by month, not cumulative figures.

**Table 1.3 - Pre-Registration Trends in 2011 (Reception Centre/ ARRA)**

Month	Households	Individuals
January 2011	1,502	6,792
February 2011	527	2,016
March 2011	1,019	4,072
April 2011	1,650	6,749
May 2011	2,587	12,045
June 2011	7,030	24,042
July 2011	4,463	19,610
August 2011	1,072	3,691
September 2011	1,215	4,563
October 2011	2,036	8,584
November 2011	448	2,134
December 2011		
<b>Total</b>	<b>23,549</b>	<b>94,298</b>

**Table 1.4 - Registration & Relocation Trends in Transit Centre up to date**

Stage of Registration & Relocation	Individuals
Total individuals fully registered so far this month	2,646
Total individuals relocated to camp so far this month	254
Total Individuals fully processed (have ration card), but not yet relocated	7,544

## Camp population by Age and Sex breakdown

As of 24 Nov 2011

Table 2.1 - ALL CAMPS Demographic Breakdown\*

Age Group	Sex				Total	
	Male	(%)	Female	(%)	Total	(%)
0 - 4	16,333	12.6%	15,905	12.3%	32,238	24.9%
5 - 11	20,850	16.1%	19,937	15.4%	40,787	31.5%
12 - 17	7,708	6.0%	6,970	5.4%	14,678	11.3%
18 - 59	13,937	10.8%	24,776	19.1%	38,713	29.9%
60 and above	1,520	1.2%	1,477	1.1%	2,997	2.3%
<b>Total ALL CAMPS</b>	<b>60,348</b>	<b>46.6%</b>	<b>69,065</b>	<b>53.4%</b>	<b>129,413</b>	<b>100.0%</b>

\* These total figures apply only to camps, not to the Transit Centre or Reception Centre

Figure 2.1 - ALL CAMPS Demographic Breakdown\*

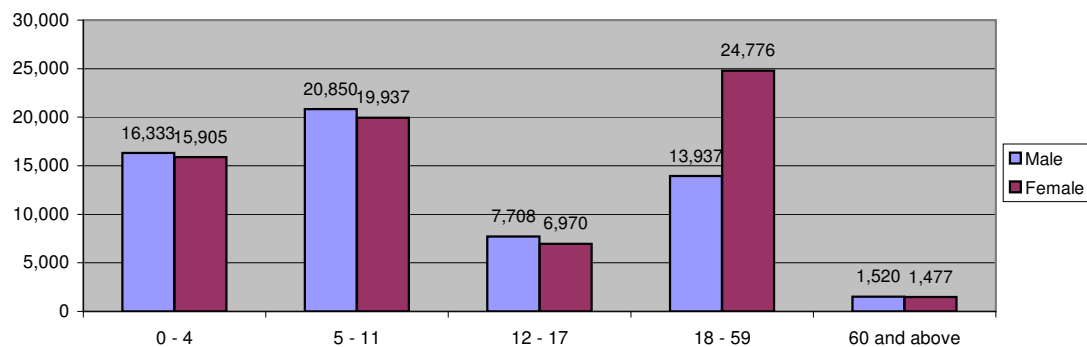
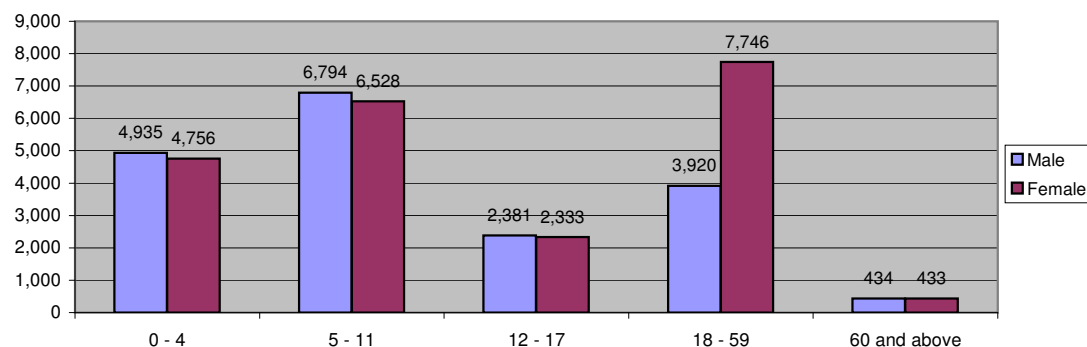


Table 2.2 - Melkadida Camp Demographic Breakdown

Age Group	Sex				Total	
	Male	(%)	Female	(%)	Total	(%)
0 - 4	4,935	12.3%	4,756	11.8%	9,691	24.1%
5 - 11	6,794	16.9%	6,528	16.2%	13,322	33.1%
12 - 17	2,381	5.9%	2,333	5.8%	4,714	11.7%
18 - 59	3,920	9.7%	7,746	19.2%	11,666	29.0%
60 and above	434	1.1%	433	1.1%	867	2.2%
<b>Total Malkadida</b>	<b>18,464</b>	<b>45.9%</b>	<b>21,796</b>	<b>54.1%</b>	<b>40,260</b>	<b>100.0%</b>

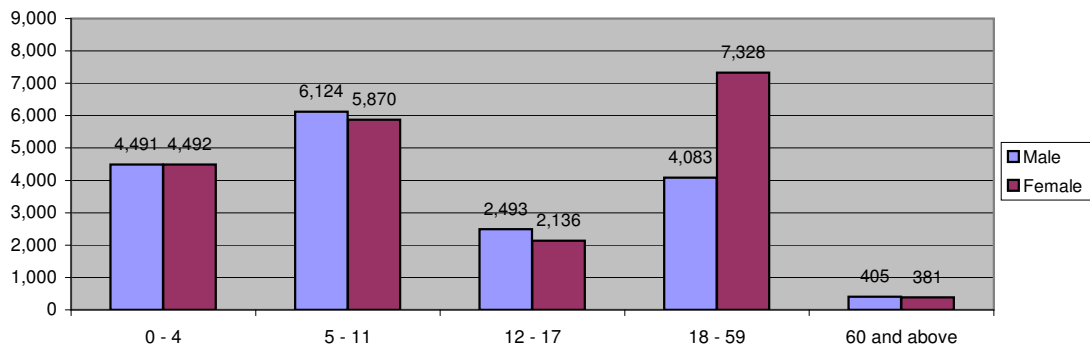
Figure 2.2 - Melkadida Camp Demographic Breakdown\*



**Table 2.3 - Bokolmanyo Camp Demographic Breakdown**

Age Group	Sex				Total	
	Male	(%)	Female	(%)	Total	(%)
0 - 4	4,491	11.9%	4,492	11.9%	8,983	23.8%
5 - 11	6,124	16.2%	5,870	15.5%	11,994	31.7%
12 - 17	2,493	6.6%	2,136	5.7%	4,629	12.2%
18 - 59	4,083	10.8%	7,328	19.4%	11,411	30.2%
60 and above	405	1.1%	381	1.0%	786	2.1%
<b>Total Bokolmanyo</b>	<b>17,596</b>	<b>46.5%</b>	<b>20,207</b>	<b>53.5%</b>	<b>37,803</b>	<b>100.0%</b>

**Figure 2.3 - Bokolmanyo Camp Demographic Breakdown\***



**Table 2.4 - Kobe Camp Demographic Breakdown**

Age Group	Sex				Total	
	Male	(%)	Female	(%)	Total	(%)
0 - 4	3,436	13.3%	3,285	12.7%	6,721	26.0%
5 - 11	4,054	15.7%	3,702	14.3%	7,756	30.0%
12 - 17	1,419	5.5%	1,196	4.6%	2,615	10.1%
18 - 59	3,141	12.1%	4,850	18.8%	7,991	30.9%
60 and above	395	1.5%	381	1.5%	776	3.0%
<b>Total Kobe</b>	<b>12,445</b>	<b>48.1%</b>	<b>13,414</b>	<b>51.9%</b>	<b>25,859</b>	<b>100.0%</b>

**Figure 2.4 - Kobe Camp Demographic Breakdown\***

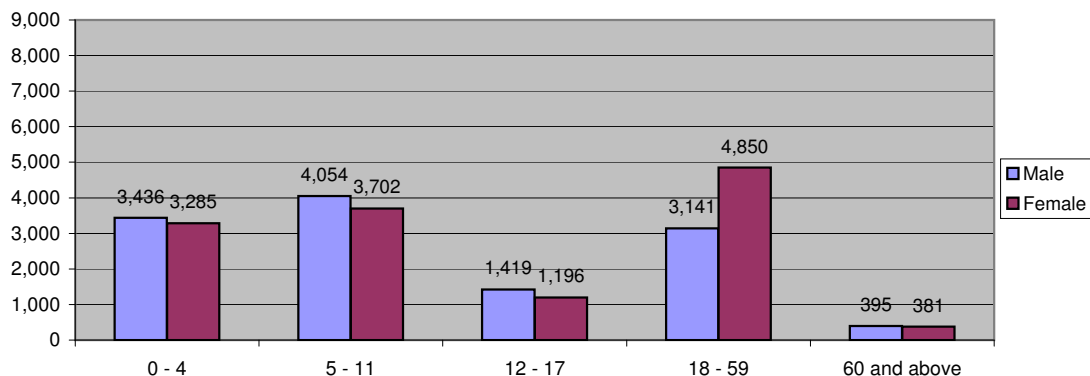


Table 2.5 - Hilaweyn Camp Demographic Breakdown

Age Group	Sex				Total	
	Male	(%)	Female	(%)	Total	(%)
0 - 4	3,471	13.6%	3,372	13.2%	6,843	26.8%
5 - 11	3,878	15.2%	3,837	15.1%	7,715	30.3%
12 - 17	1,415	5.6%	1,305	5.1%	2,720	10.7%
18 - 59	2,793	11.0%	4,852	19.0%	7,645	30.0%
60 and above	286	1.1%	282	1.1%	568	2.2%
<b>Total Hilaweyn</b>	<b>11,843</b>	<b>46.5%</b>	<b>13,648</b>	<b>53.5%</b>	<b>25,491</b>	<b>100.0%</b>

Figure 2.5 - Hilaweyn Camp Demographic Breakdown\*

