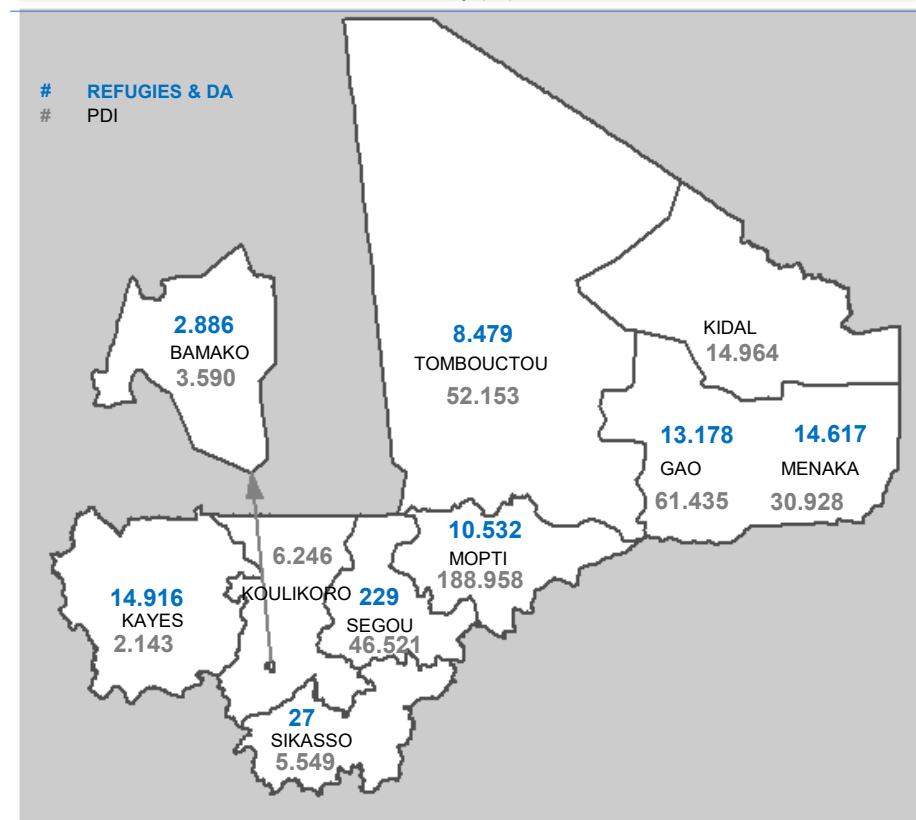


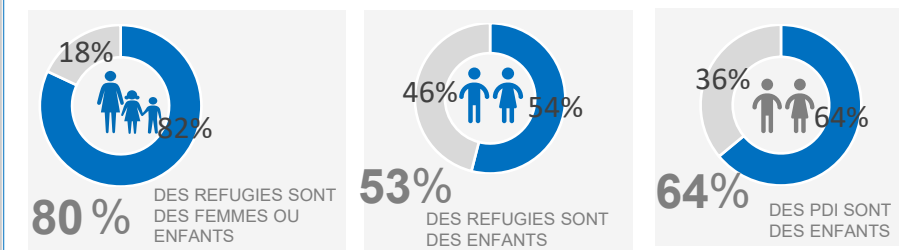
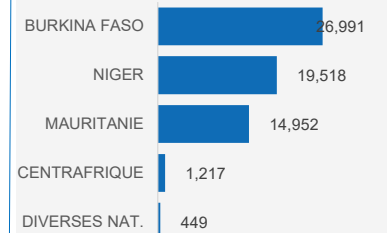
1.285.796 PERSONNES RELEVANT DU HCR

64.864 REFUGIES **84.898** RAPATRIES

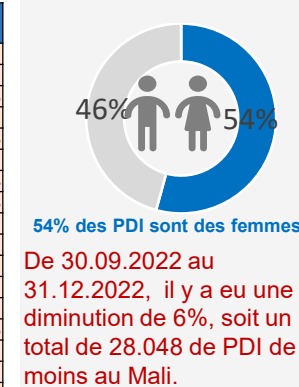
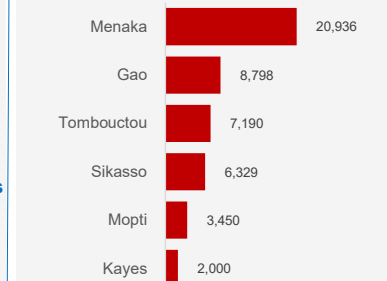
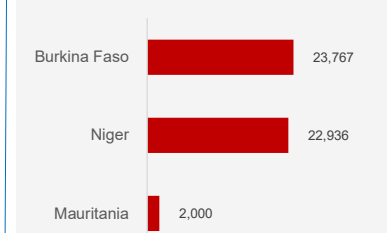
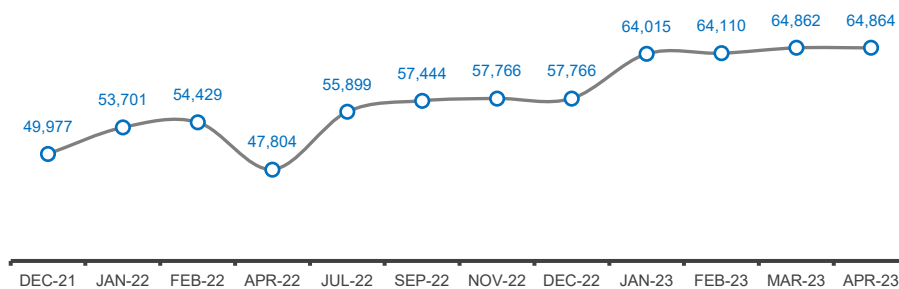
412.387 PDI **723.647** RETOURNES


REFUGIES ET DEMANDEURS D'ASILE AU MALI

	Menage	0-4 ans		5 - 11 ans		12 - 17 ans		18-59 ans		+60 ans		TOTAL
		FEMME	HOMME	FEMME	HOMME	FEMME	HOMME	FEMME	HOMME	FEMME	HOMME	
BAMAKO	1,400	73	88	218	214	178	186	819	976	63	71	2,886
GAO	3,272	933	929	2,053	1,869	821	741	2,969	2,384	184	295	13,178
KAYES	3,298	746	760	1,746	1,836	1,415	1,362	3,176	3,215	251	409	14,916
MENAKA	3,171	1,062	1,152	2,445	2,512	935	868	3,086	2,076	233	248	14,617
MOPTI	5382	952	987	840	688	263	229	4025	1845	443	260	10532
SEGOU	94	20	30	22	20	7	7	63	46	3	11	229
SIKASSO	5	1	4	2	4	4	1	4	5		2	27
TOUMBOUCTOU	1,122	527	527	1,141	1,409	603	625	2,121	1,220	140	166	8,479
TOTAL	17,744	4,314	4,477	8,467	8,552	4,226	4,019	16,263	11,767	1,317	1,462	64,864


PRINCIPAUX PAYS D'ORIGINE

ANALYSE DES CHIFFRES DES PDI

REGIONS	MENAGES	FEMMES	HOMMES	TOTAL INDIVIDUS
BANDIAGARA	15,390	47,701	44,411	92,112
MOPTI	15,683	45,534	39,047	84,581
GAO	12,122	35,609	25,826	61,435
TOUMBOUCTOU	9,807	28,599	23,554	52,153
SEGOU	8,662	19,682	15,613	35,295
MENAKA	7,558	14,804	16,124	30,928
KIDAL	2,479	8,003	6,961	14,964
DOUMENTZA	1,663	8,136	4,129	12,265
SAN	2,429	6,433	4,793	11,226
KOULIKORO	790	2,210	2,031	4,241
BAMAKO	938	2,078	1,512	3,590
SIKASSO	402	1,555	1,158	2,713
KOUTIALA	310	1,189	827	2,016
DIOILA	363	1,109	896	2,005
KITA	228	748	682	1,430
BOUGOUNI	95	384	336	720
KAYES	117	350	363	713
Total	79,036	224,124	188,263	412,387


DEMANDEURS D'ASILE EN ATTENTE D'ENREGISTREMENT PAR REGION

DEMANDEURS D'ASILE EN ATTENTE D'ENREGISTREMENT PAR PAYS D'ORIGINE

EVOLUTION DES CHIFFRES DES REFUGIES (12 DERNIERS MOIS)

EVOLUTION DES CHIFFRES DES PDI (12 DERNIERS MOIS)
