

Population
Refugees and asylum-seekers

Individuals: **1,529,272**
Households: **380,058**

\$804M Funding required
\$201.8M Funding received
\$7.8M Carry-over from 2021

UCRRP Partners 85

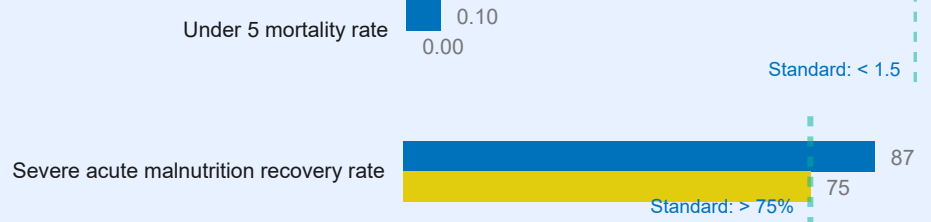
 GOVT 14	 UN Agencies 08
 NGOs 17	 INGOs 46

Sector	Indicator	Actual	Target
--------	-----------	--------	--------

Education



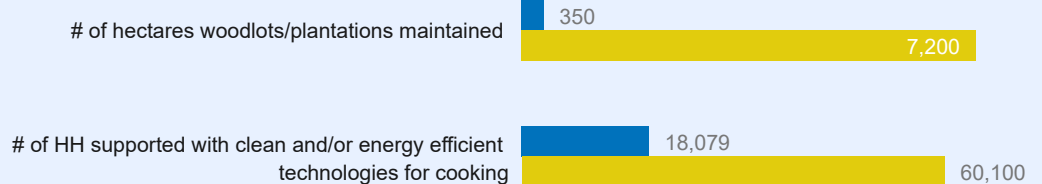
Health & Nutrition



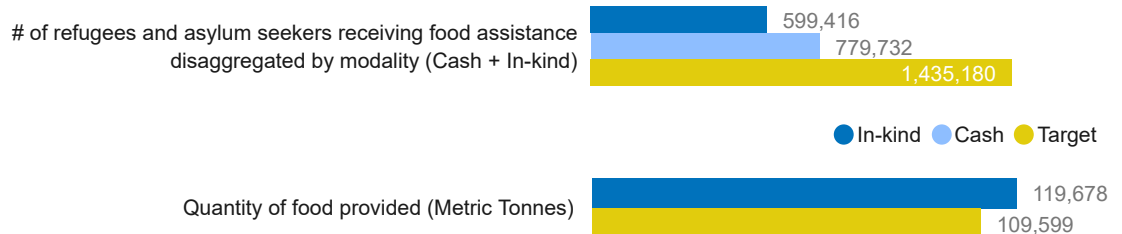
WASH



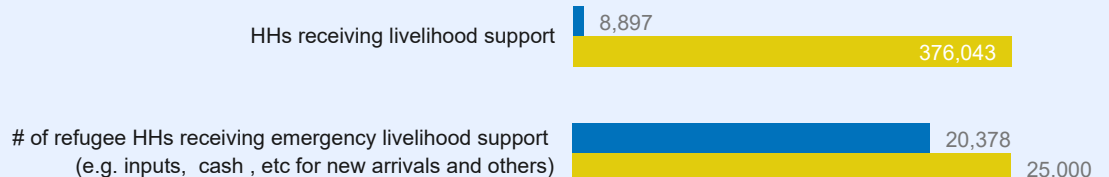
Energy & Environment

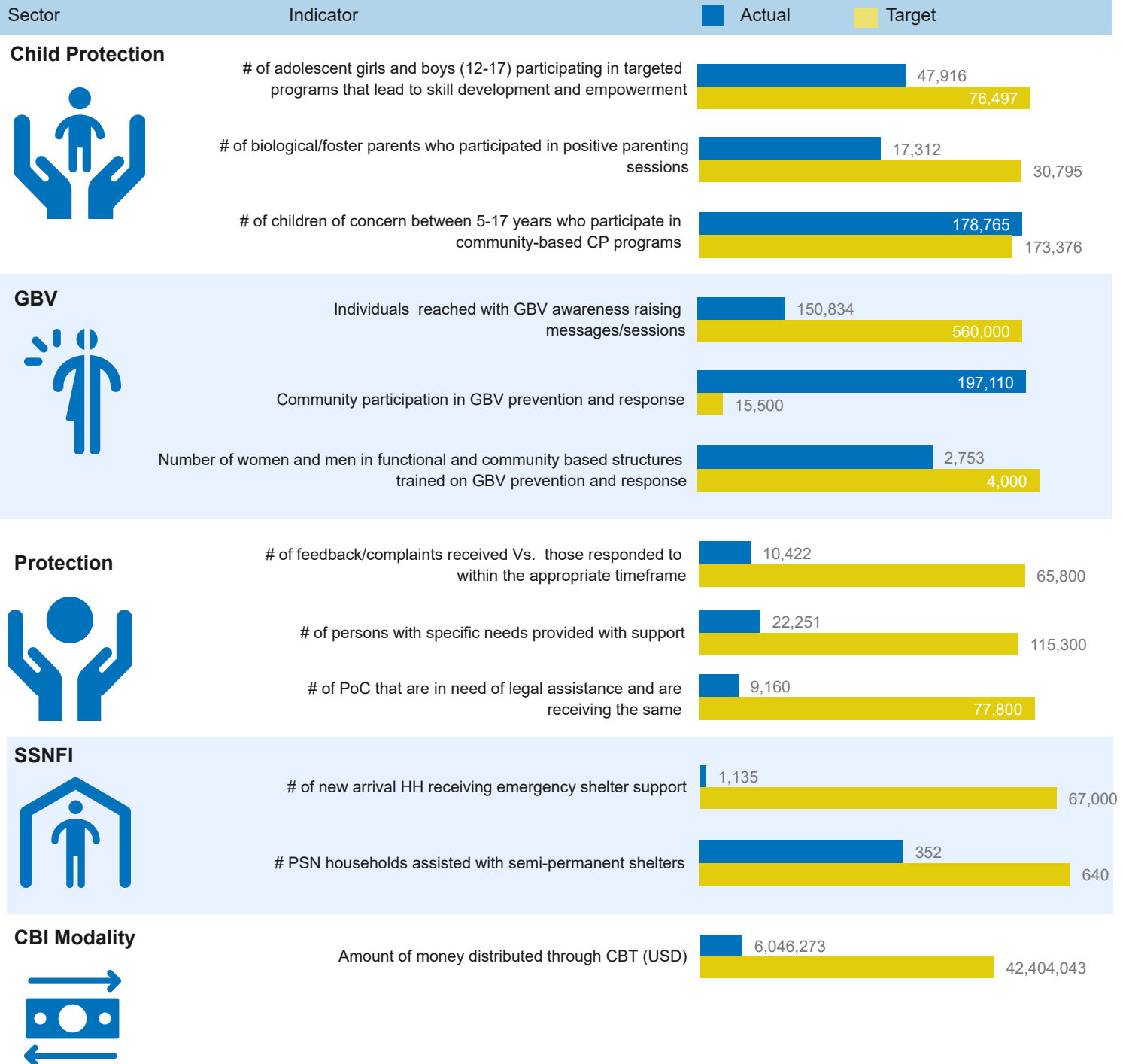


Food Security



Livelihoods & Resilience





List of Partners who reported as of Q2 2022, UN Agencies and Government

National NGOs

AFARD, AWYAD, CAFOMI, CEFORD, COVOID, HADS, JEEP, JESE, Kulika, Nsamizi, NURI, PALM Corps, SeedEffect, TPO, TRI, TTR, and URDMC

International NGOs

ACAV, ACF, ADRA, Alight, AVSI, AWR, AyudaEA, BfA, CARE, Caritas, CESVI, CFI, COHERE, CORDAID, CRS, DCA, DRC, FCA, FRC, GAU, Give Directly, GNUU, HI, IAS, ICRAF, IRC, IsraAID, JAM, JRS, KadAfrica, LWF, Malteser, MC, MTI, Oxfam, Plan, SCI, SHA, SP, UCOBAC, WCC, WCH, WHH, WIU, WVI, and ZOA

UN Agencies

FAO, ILO, UNDP, UNFPA, UNHCR, UNICEF, UNWOMEN, and WFP

Government

OPM, Adjumani DLG, Isingiro DLG, Kamwenge DLG, Kikuube DLG, Kiryandongo DLG, Koboko DLG, Kyegegwa DLG, Lamwo DLG, Madi Okollo DLG, Obongi DLG, Terego DLG, and Yumbe DLG