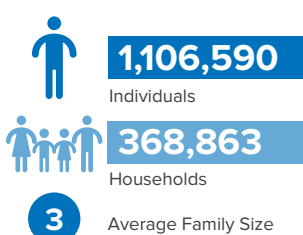
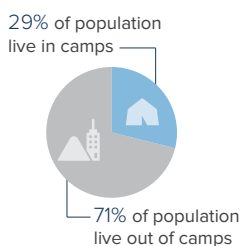


### Refugees and Asylum-seekers



### Population Distribution



### Persons With Disabilities



### Unaccompanied and Separated Children

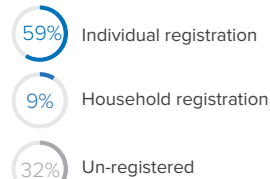


Sudan hosts one of the largest refugee populations in Africa. South Sudanese make up the majority. Many others fled violence and persecution in neighboring countries, including Eritrea, the Central African Republic, Ethiopia and Chad, but also the wars in Syria and Yemen pushed people to seek safety in Sudan. Most refugees live in out-of-camp settlements, host communities and urban areas, while others stay in 22 camps (10 at the East Sudan, 9 at White Nile State, 2 at East Darfur State and 1 at the Central Darfur State). Sudan continues to generously host and receive additional asylum-seekers.

### Registration Status

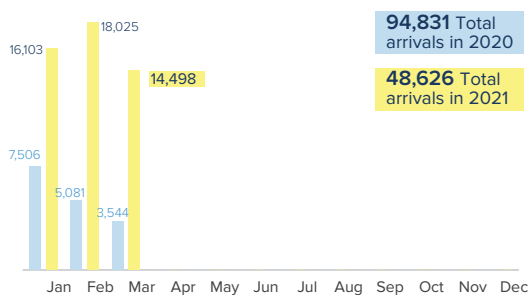
**646,981**

Individuals registered

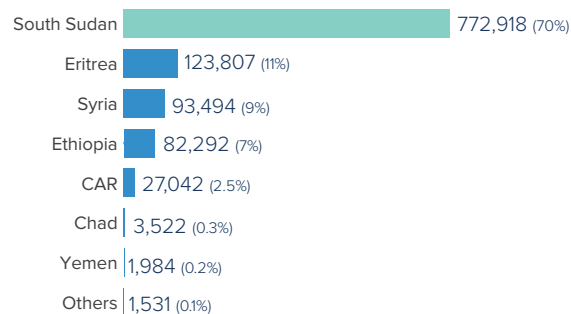


<sup>1</sup> Reviewed estimate.

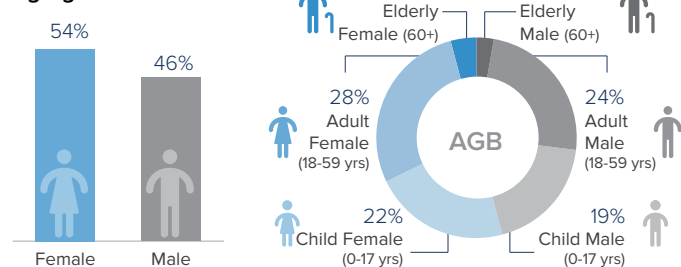
### New Arrivals Per Month (2020 - 2021)



### Country of Origin

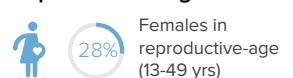


### Age-gender Breakdown<sup>2</sup>

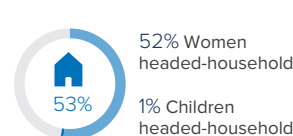


<sup>2</sup> Population distribution statistics are based on registered individuals only

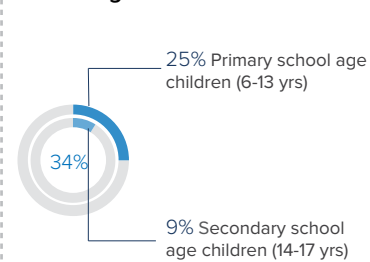
### Reproductive- age Women/Girls<sup>2</sup>



### Household Distribution<sup>2</sup>



### School-age Children<sup>2</sup>



Sources: UNHCR, Commission of Refugees (CoR), UNICEF

