

Democratic Republic of the Congo

August 2020

During the COVID-19 pandemic, UNHCR DRC is producing a condensed monthly Operational Update. Specific information about UNHCR's response to COVID-19 in DRC can be found [here](#).

Refugees



PROTECTION

- Although refugees receive assistance in camps, they remain often food insecure. Especially refugees from Burundi and South Sudan have a poor food security status and data shows that some 40 per cent of the Burundian and 80 per cent of the South Sudanese refugees were still food insecure despite the assistance they received. This may be worsened by the ration cuts, in addition to the fact that some refugees also spend their assistance on other essentials such as medical care.
- The lack of formal documentation can pose significant problems, hindering a child's chances of enrolling in school, accessing immunizations and other forms of healthcare, and even preventing them from travelling. At Meri site, Haut-Uele Province, 59 new births of South Sudanese refugees were registered at the civil status offices.
- With the support of the *Commission Nationale pour les Réfugiés (CNR)* and partners, six Burundian refugee children who have been separated from their families were transported from Lubumbashi, Haut Katanga Province to Lusenda refugee camp in South Kivu Province to be reunited with their families.
- During the reporting period, seven cases of sexual and gender-based violence were recorded in Haut-Uele Province by UNHCR's protection monitoring partner ADSSE. Five of the victims were children. All survivors were referred to appropriate service providers.



SHELTER AND CORE RELIEF ITEMS (CRIs)

- UNHCR and partners distributed clothes donated by UNIQLO to 1,583 refugees and 257 host community members with specific needs at Meri and Bele South Sudanese refugee sites.
- In Nord Ubangi Province, UNHCR partner AIRD supported refugees from CAR through Cash Based Interventions, in building transitional shelters to improve living conditions in Bili refugee camp. 80 transitional shelters were finalized in Bili, to improve shelter conditions for the most vulnerable CAR refugee households.



CASH-BASED INTERVENTIONS (CBI)

- In Haut Uele and Ituri Provinces, UNHCR, the World Food Programme (WFP) and partner ADSSE assisted over 23,500 South Sudanese refugees with cash for food assistance for August and September. The activities were implemented in strict respect of physical distancing, temperature measurement and compulsory hand washing.
- In Nord Ubangi Province, over 18,000 refugees from the Central African Republic received cash for food with the support of WFP and partners.



LIVELIHOODS AND FOOD SECURITY

- In Bas Uele Provinces, 47 refugee youth from the Central African Republic and host community members are benefiting from three months sewing vocational training programme with the support of Partner Terre Sans Frontières (TSF). All graduated will receive start-up kits, allowing them to generate income, become self-reliant and improve their standard of living.

Internally Displaced Persons (IDPs)



PROTECTION

- In the Great Kasai Region, UNHCR and its partners have registered almost 50,000 displaced persons as well as host community members in need of support as their capacity to help and host the displaced is often limited due to the extreme poverty. Plastic sheeting, blankets, soap and cooking sets have been distributed to more than 10,100 individuals. UNHCR continues to monitor the situation with our partners and respond to the needs of victims of human rights violations.
- During the reporting period, over 1,400 protection incidents were documented by UNHCR's protection monitoring partner INTERSOS in North Kivu Province. This represents a decrease of 18 per cent compared to July 2020 which may be due to the surrender of the Nduma défense du Congo-Rénové (NDC-R) leader to the Forces armées de la République démocratique du Congo (FARDC).
- In Ituri Province, UNHCR provided a three-day training on its new protection monitoring platform SAR (« système d'analyses et réponse ») to UNHCR's protection monitoring partners INTERSOS and Terre Sans Frontières. Further trainings for field monitors will take place in September. The new protection monitoring system will improve the analysis of the data gathered on the ground and also introduces an integrated referral system that will facilitate the referrals of victims and survivors of protection incidents to relevant support structures.
- As co-lead of the Camp Coordination and Camp Management (CCCM) Working Group, UNHCR conducted an evaluation visit to the Tserere displacement site located in close proximity to an FARDC military training centre. The CCCM Working Group recommends relocating the displacement site further away from the FARDC post, to maintain the civilian character of the site and to ensure that displaced persons in the sites do not become casualties should the FARDC post be attacked.
- A UNHCR legal aid programme has allowed 1,000 children to receive birth certificates through judicial hearings in Kamako and Sumbula, Kasai Province.
- UNHCR's partner for community-based protection, AVSI, trained 134 men and 56 boys as ambassadors for positive masculinity in various localities in Djugu and Irumu Territories, Ituri Province. The trainings explored the different manifestations of sexual and gender-based violence and how men can also benefit from the promotion of the equality between the women and men. The ambassadors have been selected by different groups of their communities, such as representatives of the churches, teachers and IDP committees, to ensure their wide acceptance within their communities. The newly trained ambassadors can now share this knowledge and engage with men and boys to promote gender equality and reduce the risks of SGBV in their communities.



SHELTER AND CORE RELIEF ITEMS (CRIs)

- UNHCR has identified 5,536 displaced households in Kassindi, Beni Territory, North Kivu Province who were forced to flee recent violence committed by the Allied Democratic Forces (ADF) armed group, including kidnapping, killing and rape. These families will benefit from Core Relief Items such as mats, blankets, jerrycans and solar lamps to help them meet their most basic needs. The distribution will be carried out in partnership with UNHCR partners CARITAS and AIRD in Beni and Goma.
- In North Kivu Province, UNHCR and partners have finalized the construction of 2,381 emergency shelters. UNHCR's partners AIDES and CNR are currently evaluating a site in Rutshuru territory for the construction of an additional 1,547 emergency shelters. In addition, 30 hangars were constructed in Oicha and Mangina, Beni territory, providing shelter to over 180 displaced households in the area.
- UNHCR supported over 850 households in Dimbelenge, Kasai Central Province and 743 households in Kamonia, Kasai Province with cash assistance to meet a variety of needs including access to shelter.

Clusters and Working Groups

- Since January 2020, the Shelter Cluster have provided shelter assistance to 439,091 individuals and non-food items (NFIs) to 410,886 individuals in Haut Katanga, Ituri, Kasai, Kasai Central, Nord Kivu, Sud Kivu and Tanganyika Provinces.
- Due to a severe lack of funding, the 42 humanitarian organizations part of the shelter cluster only reached 30 per cent of the targeted population in need of basic shelter assistance and NFIs.
- In addition, insecurity and logistical constraints are restricting shelter actors access to deliver their response to people in need, particularly in North Kivu, South Kivu and Ituri Provinces.

External / Donor Relations

Funding received as of 8 September 2020

Donors for UNHCR operations in DRC in 2020

United States of America (41.5M) | CERF (10M) | Sweden (3.1M) | European Union (1.6M) | Denmark (1.5M) | France (1.1M) | Canada (0.7M) | Japan (0.6M) | Unilever/UK (0.6M) | United Nations Foundation (0.3M) | International Olympic Committee (0.2M) | Pooled Funds (0.2M) | UNAIDS (0.2M) | UPS Corporate (0.2M) |

Major donors of regional or other funds with soft earmarking 2020

Germany (71.1M) | United States of America (46.8M) | United Kingdom (24.8M) | Denmark (14.6M) | Canada (10.2M) | Private Donors Germany (8M) | Private Donors USA (7.7M) | Private Donors Australia (7.4M) | Sweden (6.9M) | Private Donors Japan (4.4M) | Spain (3.4M) | Ireland (3.3M) | Finland (3.3M) | France (2.8M) | Norway (2.4M) | Private Donors United Kingdom (2.3M) |

Major donors of un-earmarked funds in 2020

Sweden (76.4M) | Private Donors Spain (52.9M) | Norway (41.4M) | Netherlands (36.1M) | Denmark (34.6M) | United Kingdom (31.7M) | Private Donors Republic of Korea (27.2M) | Germany (25.9M) | Private Donors Japan (17.9M) | Switzerland (16.4M) | France (14M) | Private Donors Italy (12.4M) | Italy (10.6M) |

Contacts

Johannes van Gemund, Senior External Relations Officer, UNHCR Representation Kinshasa,
gemund@unhcr.org, Tel: +243 996 041 000, +243 817 009 484

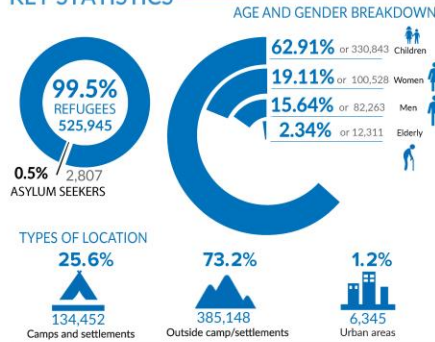
Fabien Faivre, Associate External Relations Officer, UNHCR Representation Kinshasa, faivre@unhcr.org, Tel:
+243 996 041 000, +243 825 443 419

[DR Congo Emergency page](#) | [UNHCR DRC operation page](#) | [Facebook](#) | [Twitter](#)

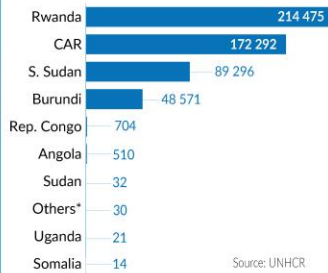
528,752

TOTAL NUMBER OF REFUGEES AND ASYLUM SEEKERS

KEY STATISTICS



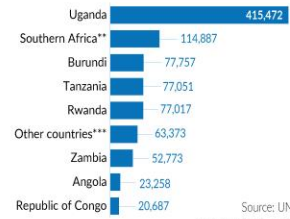
REFUGEE POPULATION BY COUNTRY OF ORIGIN



REFUGEES FROM DRC IN AFRICA

922,275

TOTAL DRC REFUGEE POPULATION



**Southern Africa includes Namibia, Botswana, Lesotho, Malawi, Zimbabwe, Mozambique, Madagascar, South Africa and the Kingdom of Eswatini.

***Other countries include South Sudan, Kenya, Central African Republic and Chad.

