

## KEY FIGURES

**300,390**  
Total refugee population

**98%**

Living in camps and settlements  
**294,979**

**82%**

Are Women and Children

**66,860**  
Households

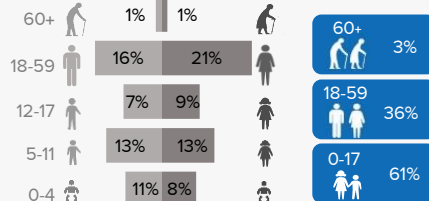
**2%**

Living in urban areas  
**5,411**

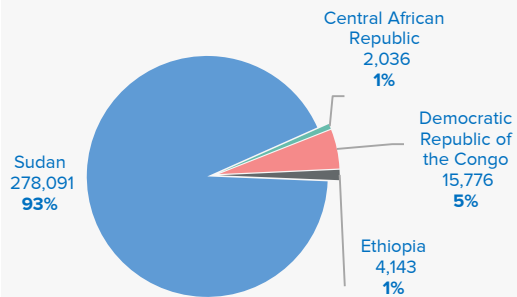
**53%**

Are female

## Age and gender breakdowns

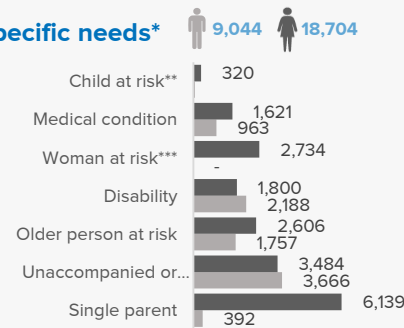


## Main countries of origin\*



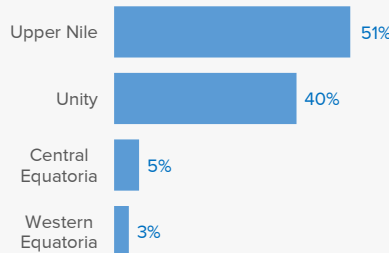
\* Excludes 344 refugees from other countries

## Main Specific needs\*

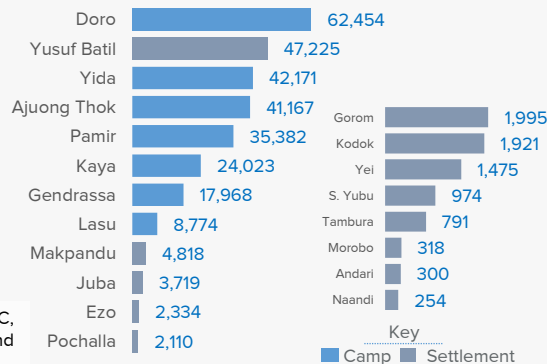


\*Individual can have more than one specific need  
\*\*Excludes children at risk of not attending school  
\*\*\*Excludes lactating mothers

## States hosting refugees



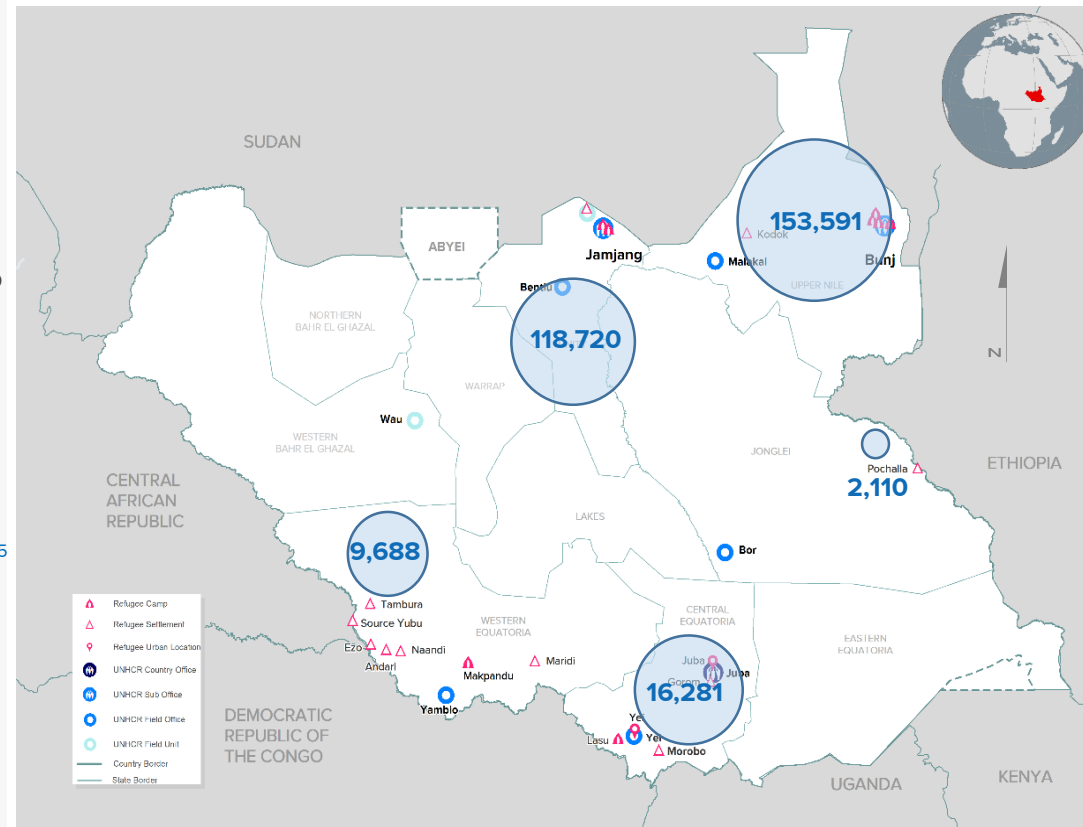
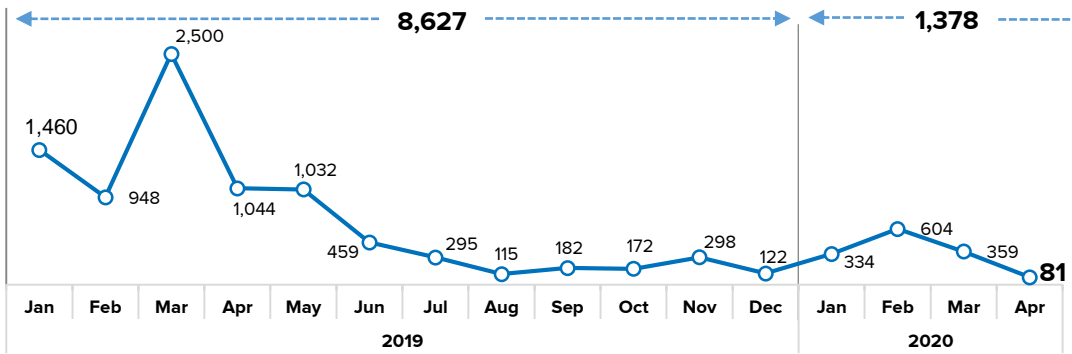
## Refugee locations



Key  
Camp Settlement

## New arrivals trends

Jan 2019 – Apr 2020



## Our Partners

CRA, AAHI, ACROSS, ACTED, AHA, CARE, DRC, HDC, IMC, IRC, LWF, RI, SCI, SP, UMCOR, JRS and WVI.

**Note: South Sudan hosts 3,787 asylum seekers (Juba -3,774; Makpandu- 8; Maban-1; Pamir -4).**

# South Sudan Refugee statistics: Population by Location, Sex and Age Group

as of the 30-April-2020



State	Location	0 - 4 years			5 - 11 years			12 - 17 years			18 - 59 years			60 years +			Total			Households		
		F	M	Total	F	M	Total	F	M	Total	F	M	Total	F	M	Total	F	M	Total	F	M	Total
Upper Nile	Doro	5,680	5,927	11,607	7,785	8,257	16,042	5,251	5,433	10,684	12,865	9,981	22,846	698	577	1,275	32,279	30,175	62,454	7,735	6,030	13,765
	Kaya	1,947	2,147	4,094	2,764	2,902	5,666	2,037	2,007	4,044	5,290	3,781	9,071	495	653	1,148	12,533	11,490	24,023	2,757	2,470	5,227
	Yusuf Batil	3,994	4,171	8,165	5,548	5,803	11,351	3,986	4,002	7,988	9,812	7,835	17,647	947	1,127	2,074	24,287	22,938	47,225	4,786	4,608	9,394
	Gendrassa	1,343	1,367	2,710	2,117	2,274	4,391	1,624	1,534	3,158	3,960	2,988	6,948	346	415	761	9,390	8,578	17,968	2,146	1,821	3,967
	Kodok	0	0	0	274	286	560	226	182	408	475	401	876	40	37	77	1,015	906	1,921	327	213	540
	<b>Total</b>	<b>12,964</b>	<b>13,612</b>	<b>26,576</b>	<b>18,488</b>	<b>19,522</b>	<b>38,010</b>	<b>13,124</b>	<b>13,158</b>	<b>26,282</b>	<b>32,402</b>	<b>24,986</b>	<b>57,388</b>	<b>2,526</b>	<b>2,809</b>	<b>5,335</b>	<b>79,504</b>	<b>74,087</b>	<b>153,591</b>	<b>17,751</b>	<b>15,142</b>	<b>32,893</b>
Unity State	Ajounj Thok	3,483	3,508	6,991	5,092	5,200	10,292	3,999	4,281	8,280	8,193	6,799	14,992	368	244	612	21,135	20,032	41,167	4,995	3,008	8,003
	Pamir	3,472	3,512	6,984	4,731	4,832	9,563	3,363	3,106	6,469	7,251	4,591	11,842	325	199	524	19,142	16,240	35,382	5,536	2,104	7,640
	Yida	3,361	3,485	6,846	6,175	6,315	12,490	4,468	4,096	8,564	9,801	3,780	13,581	429	261	690	24,234	17,937	42,171	6,418	1,845	8,263
	<b>Total</b>	<b>10,316</b>	<b>10,505</b>	<b>20,821</b>	<b>15,998</b>	<b>16,347</b>	<b>32,345</b>	<b>11,830</b>	<b>11,483</b>	<b>23,313</b>	<b>25,245</b>	<b>15,170</b>	<b>40,415</b>	<b>1,122</b>	<b>704</b>	<b>1,826</b>	<b>64,511</b>	<b>54,209</b>	<b>118,720</b>	<b>16,949</b>	<b>6,957</b>	<b>23,906</b>
Central Equatoria	Gorom	169	175	344	204	227	431	165	183	348	438	396	834	27	11	38	1,003	992	1,995	324	310	634
	Juba	116	99	215	208	189	397	137	132	269	449	2,268	2,717	7	114	121	917	2,802	3,719	243	2,289	2,532
	Lasu	222	239	461	1,195	1,196	2,391	814	793	1,607	2,109	1,817	3,926	249	140	389	4,589	4,185	8,774	1,259	1,203	2,462
	Morobo	6	12	18	53	44	97	26	43	69	71	53	124	4	6	10	160	158	318	38	41	79
	Yei	86	98	184	162	199	361	134	143	277	266	353	619	15	19	34	663	812	1,475	222	303	525
	<b>Total</b>	<b>599</b>	<b>623</b>	<b>1,222</b>	<b>1,822</b>	<b>1,855</b>	<b>3,677</b>	<b>1,276</b>	<b>1,294</b>	<b>2,570</b>	<b>3,333</b>	<b>4,887</b>	<b>8,220</b>	<b>302</b>	<b>290</b>	<b>592</b>	<b>7,332</b>	<b>8,949</b>	<b>16,281</b>	<b>2,086</b>	<b>4,146</b>	<b>6,232</b>
Jonglei State	Pochalla	216	221	437	202	240	442	191	234	425	573	168	741	52	13	65	1,234	876	2,110	435	87	522
	<b>Total</b>	<b>216</b>	<b>221</b>	<b>437</b>	<b>202</b>	<b>240</b>	<b>442</b>	<b>191</b>	<b>234</b>	<b>425</b>	<b>573</b>	<b>168</b>	<b>741</b>	<b>52</b>	<b>13</b>	<b>65</b>	<b>1,234</b>	<b>876</b>	<b>2,110</b>	<b>435</b>	<b>87</b>	<b>522</b>
Western Equatoria	Andari	4	3	7	46	45	91	18	25	43	86	52	138	8	13	21	162	138	300	60	61	121
	Ezo	12	15	27	245	269	514	151	152	303	791	503	1,294	105	91	196	1,304	1,030	2,334	557	424	981
	Makpandu	429	482	911	557	524	1,081	348	318	666	1,072	975	2,047	45	68	113	2,451	2,367	4,818	661	815	1,476
	Maridi	6	4	10	26	25	51	23	24	47	45	62	107	0	2	2	100	117	217	31	52	83
	Naandi	3	2	5	37	35	72	24	28	52	55	52	107	8	10	18	127	127	254	39	45	84
	Source yubu	5	8	13	136	163	299	91	89	180	287	162	449	16	17	33	535	439	974	196	124	320
	Tambura	6	10	16	139	148	287	85	73	158	200	118	318	8	4	12	438	353	791	147	95	242
	<b>Total</b>	<b>465</b>	<b>524</b>	<b>989</b>	<b>1,186</b>	<b>1,209</b>	<b>2,395</b>	<b>740</b>	<b>709</b>	<b>1,449</b>	<b>2,536</b>	<b>1,924</b>	<b>4,460</b>	<b>190</b>	<b>205</b>	<b>395</b>	<b>5,117</b>	<b>4,571</b>	<b>9,688</b>	<b>1,691</b>	<b>1,616</b>	<b>3,307</b>
<b>Grand total</b>		<b>24,560</b>	<b>25,485</b>	<b>50,045</b>	<b>37,696</b>	<b>39,173</b>	<b>76,869</b>	<b>27,161</b>	<b>26,878</b>	<b>54,039</b>	<b>64,089</b>	<b>47,135</b>	<b>111,224</b>	<b>4,192</b>	<b>4,021</b>	<b>8,213</b>	<b>157,698</b>	<b>142,692</b>	<b>300,390</b>	<b>38,912</b>	<b>27,948</b>	<b>66,860</b>

# South Sudan Statistics: Population by Country of Origin, Sex and Age Group

as of the 30-April-2020



Country of Origin	Settlement	Households (HHs)			Persons																	
		Total HHs	Female headed		0 - 4 years			5 - 11 years			12 - 17 years			18 - 59 years			60 years +			Total		
			HHs	%	F	M	T	F	M	T	F	M	T	F	M	T	F	M	T	F	M	T
CENTRAL AFRICAN REPUBLIC	Andari	1	-	0%	0	0	0	0	0	0	0	0	0	1	1	0	0	0	0	1	1	
	Ezo	13	8	62%	0	0	0	3	6	9	2	4	6	13	4	17	1	2	3	19	16	35
	Makpandu	111	23	21%	21	28	49	20	25	45	15	14	29	49	92	141	0	6	6	105	165	270
	Naandi	7	4	57%	0	1	1	1	6	7	1	0	1	5	3	8	0	0	0	7	10	17
	SourceYubu	308	188	61%	4	8	12	132	163	295	88	87	175	278	158	436	15	15	30	517	431	948
	Tambura	228	139	61%	5	10	15	134	143	277	84	71	155	191	112	303	6	4	10	420	340	760
	Juba	1	-	0%	0	0	0	0	0	0	2	1	3	1	1	2	0	0	0	3	2	5
	<b>Total</b>	<b>669</b>	<b>362</b>	<b>54%</b>	<b>30</b>	<b>47</b>	<b>77</b>	<b>290</b>	<b>343</b>	<b>633</b>	<b>192</b>	<b>177</b>	<b>369</b>	<b>537</b>	<b>371</b>	<b>908</b>	<b>22</b>	<b>27</b>	<b>49</b>	<b>1,071</b>	<b>965</b>	<b>2,036</b>
DEMOCRATIC REPUBLIC OF THE CONGO	Gorom	1	-	0%	1	-	1	-	1	1	-	1	1	-	-	-	-	1	1	1	3	4
	Andari	120	60	50%	4	3	7	46	45	91	18	25	43	86	51	137	8	13	21	162	137	299
	Ezo	968	549	57%	12	15	27	242	263	505	149	148	297	778	499	1,277	104	89	193	1,285	1,014	2,299
	Juba	18	5	28%	-	1	1	5	2	7	3	3	6	6	10	16	2	3	5	16	19	35
	Lasu	2,214	1,200	54%	199	230	429	1,098	1,088	2,186	743	701	1,444	1,999	1,587	3,586	248	136	384	4,287	3,742	8,029
	Makpandu	1,183	594	50%	365	389	754	442	413	855	273	257	530	895	691	1,586	44	53	97	2,019	1,803	3,822
	Morobo	79	38	48%	6	12	18	53	44	97	26	43	69	71	53	124	4	6	10	160	158	318
	Naandi	77	35	45%	3	1	4	36	29	65	23	28	51	50	49	99	8	10	18	120	117	237
	SourceYubu	12	8	67%	1	-	1	4	-	4	3	2	5	9	4	13	1	2	3	18	8	26
	Tambura	14	8	57%	1	-	1	5	5	10	1	2	3	9	6	15	2	-	2	18	13	31
	Yei	250	168	67%	50	55	105	72	87	159	50	61	111	175	101	276	15	10	25	362	314	676
<b>Total</b>	<b>4,936</b>	<b>2,665</b>	<b>54%</b>	<b>642</b>	<b>706</b>	<b>1,348</b>	<b>2,003</b>	<b>1,977</b>	<b>3,980</b>	<b>1,289</b>	<b>1,271</b>	<b>2,560</b>	<b>4,078</b>	<b>3,051</b>	<b>7,129</b>	<b>436</b>	<b>323</b>	<b>759</b>	<b>8,448</b>	<b>7,328</b>	<b>15,776</b>	
ETHIOPIA	Doro	1	-	1	2	-	2	2	-	2	-	-	-	3	1	4	-	-	-	7	1	8
	Gorom	628	324	52%	167	174	341	201	224	425	163	182	345	437	391	828	27	10	37	995	981	1,976
	Juba	15	3	0%	1	-	1	1	2	3	-	-	-	9	13	22	-	-	-	11	15	26
	Makpandu*	7	2	0%	1	-	1	1	1	2	1	-	1	2	5	7	-	-	-	5	6	11
	Pochalla	522	435	83%	216	221	437	202	240	442	191	234	425	573	168	741	52	13	65	1,234	876	2,110
	Kodok	2	1	50%	-	-	-	1	1	2	2	-	2	2	-	2	-	-	-	5	1	6
	Ajuong Thok	1	1	100%	-	1	1	-	1	1	-	-	-	2	2	4	-	-	-	2	4	6
	<b>Total</b>	<b>1,176</b>	<b>766</b>	<b>4</b>	<b>387</b>	<b>396</b>	<b>783</b>	<b>408</b>	<b>469</b>	<b>877</b>	<b>357</b>	<b>416</b>	<b>773</b>	<b>1,028</b>	<b>580</b>	<b>1,608</b>	<b>79</b>	<b>23</b>	<b>102</b>	<b>2,259</b>	<b>1,884</b>	<b>4,143</b>
SUDAN	Ajuong Thok	8,002	4,994	62%	3,483	3,507	6,990	5,092	5,199	10,291	3,999	4,281	8,280	8,191	6,797	14,988	368	244	612	21,133	20,028	41,161
	Yusif Batil	9,394	4,786	51%	3,994	4,171	8,165	5,548	5,803	11,351	3,986	4,002	7,988	9,812	7,835	17,647	947	1,127	2,074	24,287	22,938	47,225
	Doro	13,764	7,735	56%	5,678	5,927	11,605	7,783	8,257	16,040	5,251	5,433	10,684	12,861	9,980	22,841	698	577	1,275	32,271	30,174	62,445
	Gendrassa	3,967	2,146	54%	1,343	1,367	2,710	2,117	2,274	4,391	1,624	1,534	3,158	3,960	2,988	6,948	346	415	761	9,390	8,578	17,968
	Gorom	4	-	4	1	1	2	3	2	5	2	-	2	1	4	5	-	-	-	7	7	14
	Juba	2,288	216	9%	104	91	195	197	184	381	132	125	257	396	2,060	2,456	5	103	108	834	2,563	3,397
	Kaya	5,227	2,757	53%	1,947	2,147	4,094	2,764	2,902	5,666	2,037	2,007	4,044	5,290	3,781	9,071	495	653	1,148	12,533	11,490	24,023
	Kodok	538	326	61%	-	-	-	273	285	558	224	182	406	473	401	874	40	37	77	1,010	905	1,915
	Lasu	248	59	24%	23	9	32	97	108	205	71	92	163	110	230	340	1	4	5	302	443	745
	Makpandu	123	35	28%	39	58	97	87	82	169	59	46	105	111	141	252	-	7	7	296	334	630
	Maridi	83	31	37%	6	4	10	26	25	51	23	24	47	45	62	107	-	2	2	100	117	217
	Pamir	7,640	5,536	72%	3,472	3,512	6,984	4,731	4,832	9,563	3,363	3,106	6,469	7,251	4,591	11,842	325	199	524	19,142	16,240	35,382
	Yei	275	54	20%	36	43	79	90	112	202	84	82	166	90	252	342	-	9	9	300	498	798
Yida	8,263	6,418	78%	3,361	3,485	6,846	6,175	6,315	12,490	4,468	4,096	8,564	9,801	3,780	13,581	429	261	690	24,234	17,937	42,171	
<b>Total</b>	<b>59,816</b>	<b>35,093</b>	<b>59%</b>	<b>23,487</b>	<b>24,322</b>	<b>47,809</b>	<b>34,983</b>	<b>36,380</b>	<b>71,363</b>	<b>25,323</b>	<b>25,010</b>	<b>50,333</b>	<b>58,392</b>	<b>42,902</b>	<b>101,294</b>	<b>3,654</b>	<b>3,638</b>	<b>7,292</b>	<b>145,839</b>	<b>132,252</b>	<b>278,091</b>	
Others*	Others*	263	26	10%	14	15	29	12	3	15	-	4	4	54	231	285	1	10	11	81	263	344
	<b>Total</b>	<b>263</b>	<b>26</b>	<b>10%</b>	<b>14</b>	<b>15</b>	<b>29</b>	<b>12</b>	<b>3</b>	<b>15</b>	<b>-</b>	<b>4</b>	<b>4</b>	<b>54</b>	<b>231</b>	<b>285</b>	<b>1</b>	<b>10</b>	<b>11</b>	<b>81</b>	<b>263</b>	<b>344</b>
<b>Grand Total</b>	<b>66,860</b>	<b>38,912</b>	<b>58%</b>	<b>24,560</b>	<b>25,486</b>	<b>50,046</b>	<b>37,696</b>	<b>39,172</b>	<b>76,868</b>	<b>27,161</b>	<b>26,878</b>	<b>54,039</b>	<b>64,089</b>	<b>47,135</b>	<b>111,224</b>	<b>4,192</b>	<b>4,021</b>	<b>8,213</b>	<b>157,698</b>	<b>142,692</b>	<b>300,390</b>	

\* Refers to refugees from Uganda, Somalia, Eritrea, Syria, Burundi and Egypt spread in Gorom, Lasu, Juba, Makpandu and Doro.

# Asylum Seekers Population by Country of Origin, Sex and Age Group in South Sudan

as of the 30-April-2020



Country of Origin	Location	Principal Applicants			Persons																	
		Total Cases	Female headed		0 - 4 years			5 - 11 years			12 - 17 years			18 - 59 years			60 years +			Total		
			Cases	%	F	M	T	F	M	T	F	M	T	F	M	T	F	M	T	F	M	T
BURUNDI	Juba	742	21	3%	18	13	31	10	9	19	3	4	7	74	723	797	0	0	0	105	749	854
	Total	742	21	3%	18	13	31	10	9	19	3	4	7	74	723	797	-	-	-	105	749	854
CHAD	Juba	1	-	0%	-	-	-	-	-	-	-	-	-	-	1	1	-	-	-	-	1	1
	Total	1	-	3%	-	-	-	-	-	-	-	-	-	-	1	1	-	-	-	-	1	1
CAMEROON	Juba	2	-	0%	-	-	-	-	-	-	-	-	-	2	2	-	-	-	-	2	2	
	Makpandu	2	-	0%	-	-	-	-	-	-	-	-	-	2	2	-	-	-	-	2	2	
	Total	4	-	0%	-	-	-	-	-	-	-	-	-	4	4	-	-	-	-	4	4	
ERITREA	Juba	1,939	376	18%	99	150	249	45	45	90	1	8	9	539	1,544	2,083	6	57	63	690	1,804	2,494
	Makpandu	3	-	0%	-	-	-	-	-	-	-	-	-	3	3	-	-	-	-	3	3	
	Total	1,942	376	19%	99	150	249	45	45	90	1	8	9	539	1,547	2,086	6	57	63	690	1,807	2,497
ETHIOPIA	Doro	1	-	0%	-	-	-	-	-	-	-	-	-	1	1	-	-	-	-	1	1	
	Juba	272	61	18%	8	19	27	11	6	17	1	-	1	114	210	324	-	2	2	134	237	371
	Makpandu	2	-	0%	-	-	-	-	-	-	-	-	-	2	2	-	-	-	-	2	2	
	Total	275	61	22%	8	19	27	11	6	17	1	-	1	114	213	327	-	2	2	134	240	374
SOMALIA	Juba	30	1	3%	-	-	-	-	-	-	-	-	-	1	29	30	-	-	-	1	29	30
	Total	30	1	3%	-	-	-	-	-	-	-	-	-	1	29	30	-	-	-	1	29	30
SUDAN	Juba	7	-	0%	-	1	1	-	-	-	-	-	-	2	5	7	-	2	2	2	8	10
	Pamir	-	-	0%	-	-	-	-	-	-	-	-	-	4	4	-	-	-	-	4	4	
	Total	7	-	0%	-	1	1	-	-	-	-	-	-	2	9	11	-	2	2	2	12	14
SYRIA	Juba	1	-	0%	-	-	-	-	-	-	-	-	-	1	1	-	-	-	-	1	1	
	Makpandu	1	-	0%	-	-	-	-	-	-	-	-	-	1	1	-	-	-	1	-	1	
	Total	2	-	0%	-	-	-	-	-	-	-	-	-	2	2	-	-	-	1	1	2	
Egypt	Juba	1	-	0%	-	-	-	-	-	-	-	-	-	1	1	-	-	-	-	1	1	
	Juba	1	-	0%	-	-	-	-	-	-	-	-	-	1	1	-	-	-	-	1	1	
UGANDA	Juba	1	-	0%	-	-	-	-	-	-	-	-	-	1	1	-	-	-	-	1	1	
	Juba	4	-	0%	2	-	2	-	-	-	-	-	-	1	4	5	-	-	-	3	4	7
DRC	Juba	2	-	0%	-	-	-	-	-	-	-	-	-	2	2	-	-	-	-	2	2	
	Juba	2	-	0%	-	-	-	-	-	-	-	-	-	2	2	-	-	-	-	2	2	
Yemen	Juba	2	-	0%	-	-	-	-	-	-	-	-	-	2	2	-	-	-	-	2	2	
	Total	8	-	0%	2	-	2	-	-	-	-	-	-	1	8	9	-	-	-	3	8	11
Grand Total		3,011	459	1	127	183	310	66	60	126	5	12	17	731	2,536	3,267	6	61	67	936	2,851	3,787