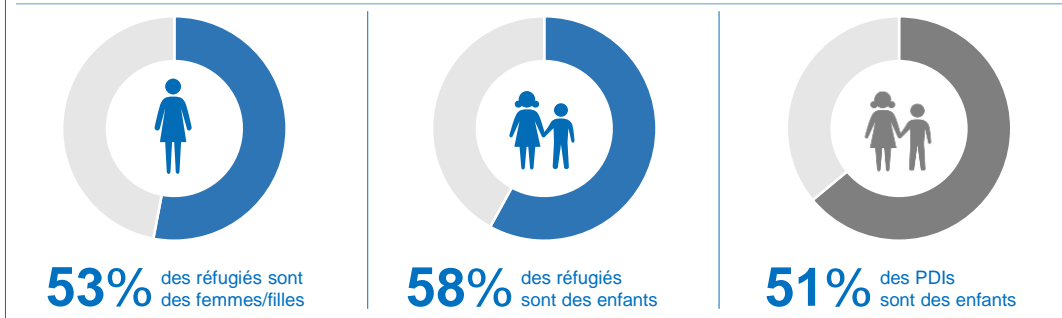
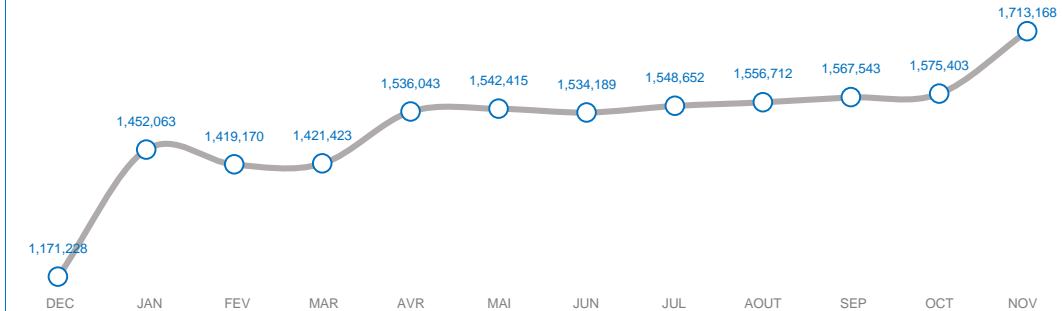


PERSONNES RELEVANT DE LA COMPETENCE DU HCR (POCs) PAR REGIONS

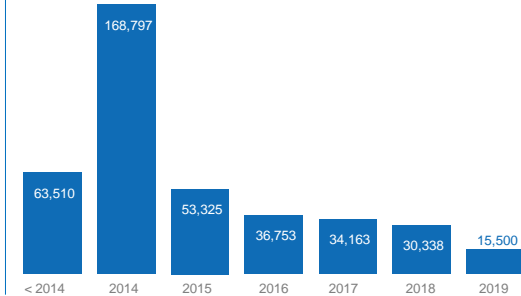
	REFUGIES CENTRAFRICAINS	REFUGIES NIGERIENS	REFUGIES URBAINS*	DEMANDEURS D'ASILE	PDIs	RETOURNES (ANCIENS PDIs)	TOTAL POCs
ADAMAOUA	63,509	-	1,260	-	5,301	-	70,070
CENTRE	-	-	15,083	4,601	23640	-	43,324
EST	183,476	-	-	-	-	-	183,476
EXTREME-NORD	-	107,423	-	-	270,870	110,574	488,867
LITTORAL	-	-	9,200	5,087	76,880	-	91,167
NORD	24,581	-	145	-	-	-	24,726
NORD-OUEST	-	-	-	-	271,164	69,310	340,474
OUEST	-	-	-	-	123,308	-	123,308
SUD-OUEST	-	-	617	-	179,100	168,039	347,756
<b>GRAND TOTAL</b>	<b>271,566</b>	<b>107,423</b>	<b>26,305</b>	<b>9,688</b>	<b>950,263</b>	<b>347,923</b>	<b>1,713,168</b>



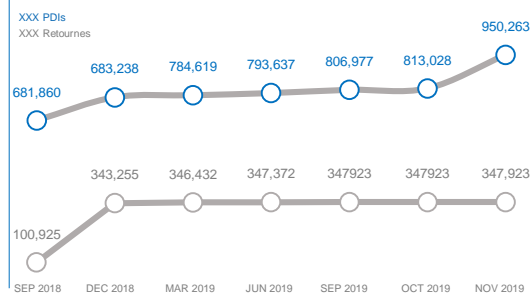
EVOLUTION DE LA POPULATION (12 DERNIERS MOIS)

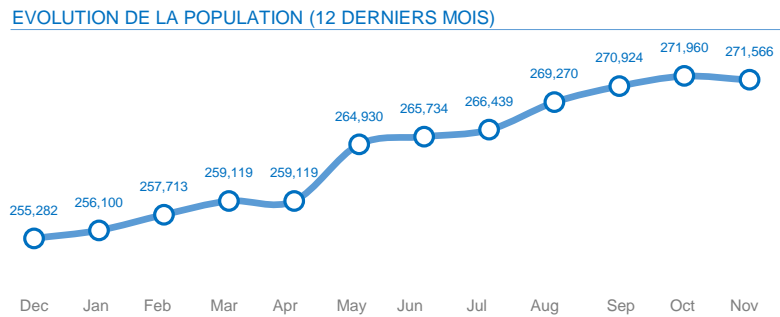
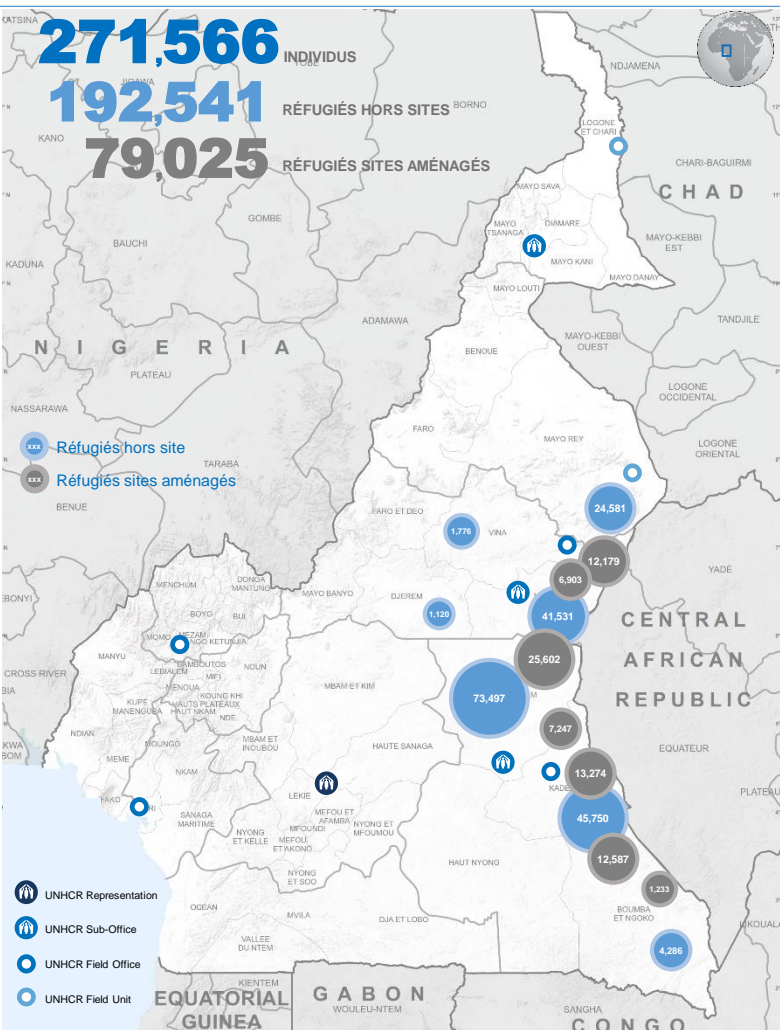


Arrivées des réfugiés et demandeurs d'asile



Evolution de la population déplacée interne et retournée

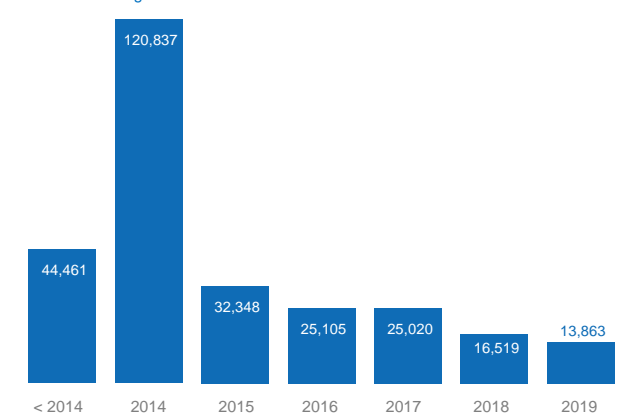




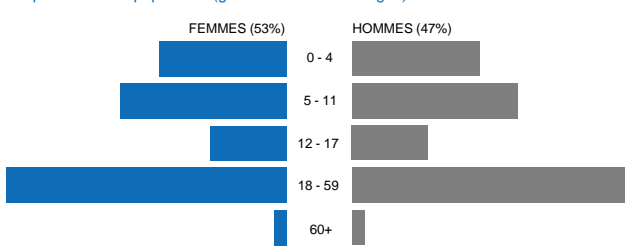
### RÉFUGIÉS PAR TRANCHES D'ÂGES

REGION	DEPARTEMENT	0-4		5-11		12-17		18-59		60+		TOTAL
		FEMME	HOMME	FEMME	HOMME	FEMME	HOMME	FEMME	HOMME	FEMME	HOMME	
ADAMAOUA	DJEREM	76	81	176	179	114	119	235	103	21	16	1120
	MBERE	4641	4759	8140	8280	5002	5046	13442	8883	1179	1241	60613
EST	VINA	64	76	214	209	157	173	464	351	40	28	1776
	BOUMBA-ET-NGOKO	393	363	635	674	453	411	1170	1227	73	120	5519
NORD	KADEI	6071	6261	9581	9674	5613	5800	17626	15434	1147	1651	78858
	LOM-ET-DJEREM	7490	7949	11850	11754	7220	7197	23359	18729	1701	1850	99099
MAYO-REY		1827	1930	3450	3514	1810	1747	5717	3794	407	385	24581
<b>GRAND TOTAL</b>		<b>20562</b>	<b>21419</b>	<b>34046</b>	<b>34284</b>	<b>20369</b>	<b>20493</b>	<b>62013</b>	<b>48521</b>	<b>4568</b>	<b>5291</b>	<b>271566</b>

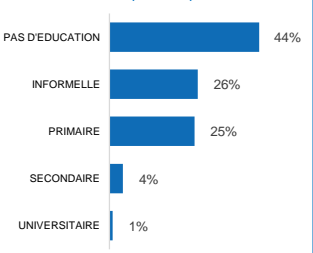
### Arrivées des réfugiés



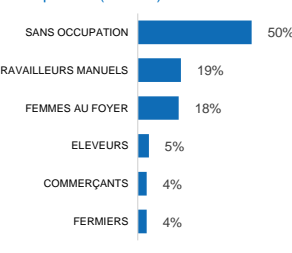
### Répartition de la population (genres et tranches d'âges)



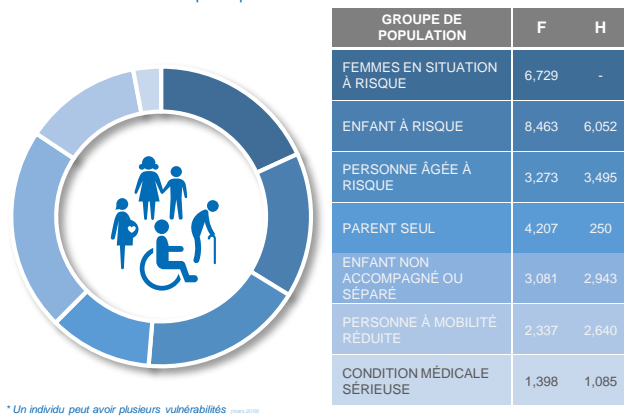
### Niveaux d'études (adultes)



### Occupations (adultes)



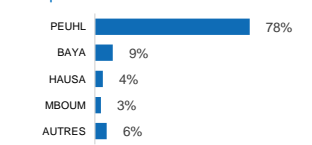
### Personnes avec besoins spécifiques\*



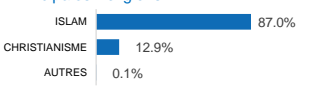
### Enfants en âges scolaires

REGION	DEPARTEMENT	3-5		6-13		14-17	
		FILLES	GARÇONS	FILLES	GARÇONS	FILLES	GARÇONS
ADAMAOUA	DJEREM	80	76	201	209	67	72
	MBERE	3790	3935	9055	9090	2920	3010
EST	VINA	72	76	244	249	95	110
	BOUMBA-ET-NGOKO	356	315	733	734	262	259
NORD	KADEI	4926	4903	10357	10481	3372	3553
	LOM-ET-DJEREM	5844	6159	13030	12762	4342	4421
MAYO-REY		1544	1562	3660	3709	1073	1048
<b>GRAND TOTAL</b>		<b>16612</b>	<b>17026</b>	<b>37280</b>	<b>37234</b>	<b>12131</b>	<b>12473</b>

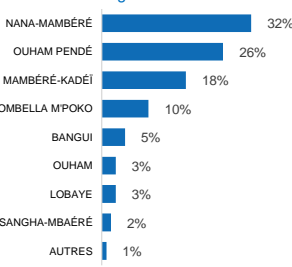
### Principales Ethnies

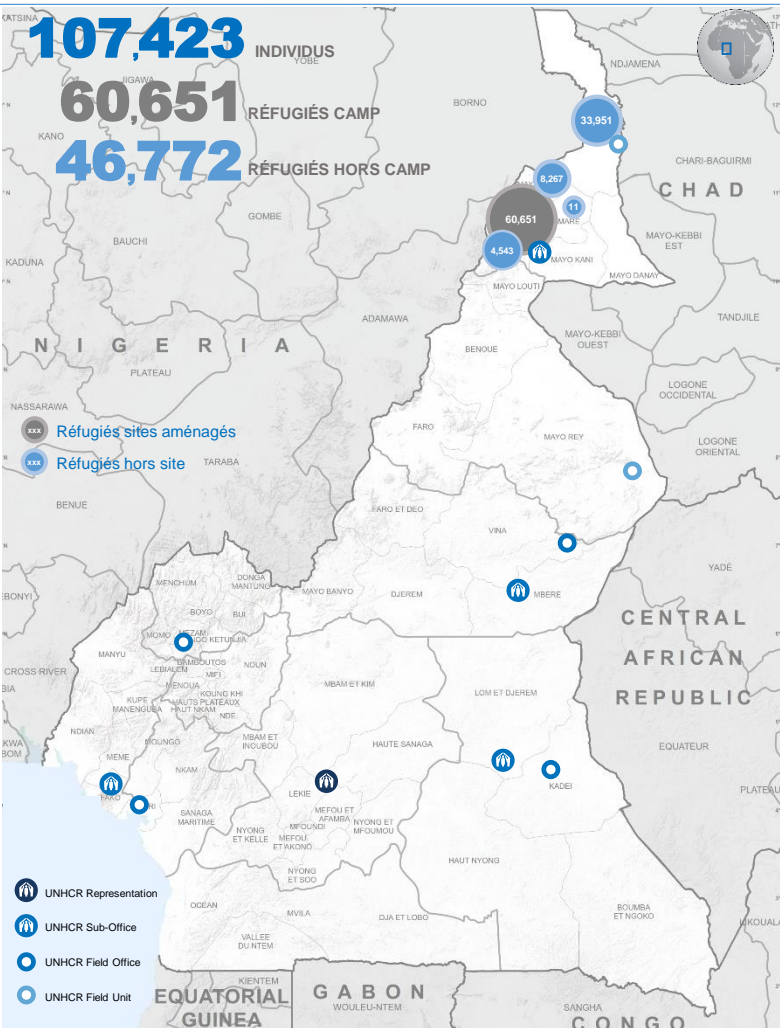


### Principales Religions



### Préfectures d'origine

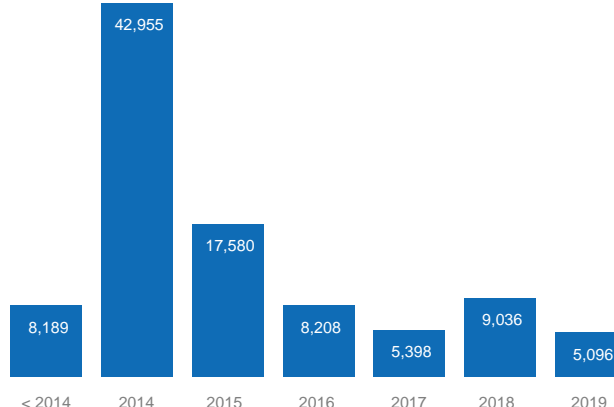




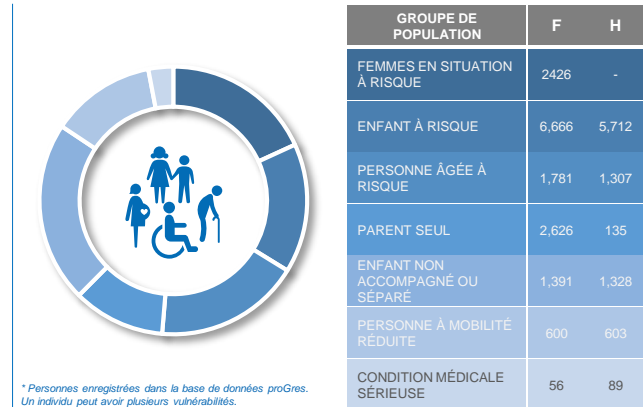
Réfugiés par tranches d'âges

DEPARTEMENT/CAMP	0-4		5-11		12-17		18-59		60+		TOTAL
	FEMME	HOMME	FEMME	HOMME	FEMME	HOMME	FEMME	HOMME	FEMME	HOMME	
MINAWAO	6,331	6,402	8,047	8,147	4,391	4,582	12,105	7,822	1,536	1,288	60,651
DIAMARE		5	1		3		1	1			11
LOGONE-ET-CHARI	2,729	2,851	5,726	5,431	1,679	1,416	7,412	5,300	551	856	33,951
MAYO SAVA	814	836	1,188	1,055	388	397	1,859	1,390	156	184	8,267
MAYO TSANAGA	396	388	733	765	351	327	920	554	60	49	4,543
<b>GRAND TOTAL</b>	<b>10,270</b>	<b>10,482</b>	<b>15,695</b>	<b>15,398</b>	<b>6,812</b>	<b>6,722</b>	<b>22,297</b>	<b>15,067</b>	<b>2,303</b>	<b>2,377</b>	<b>107,423</b>

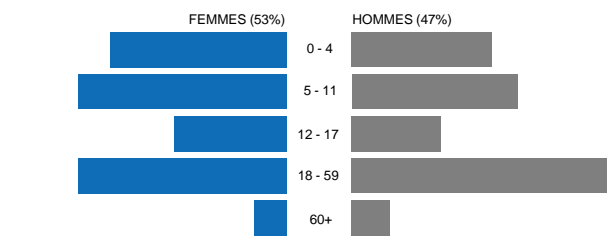
Arrivées des réfugiés par année (enregistrement biométrique)



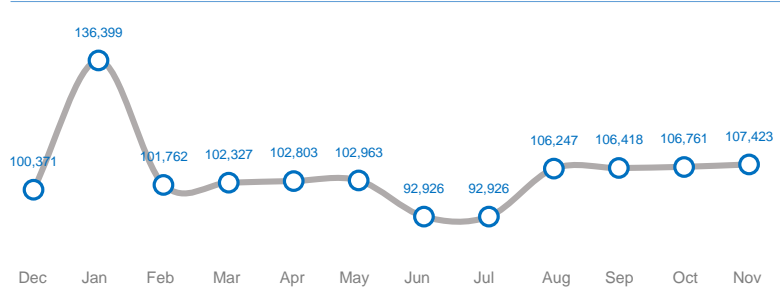
Personnes avec besoins spécifiques\*



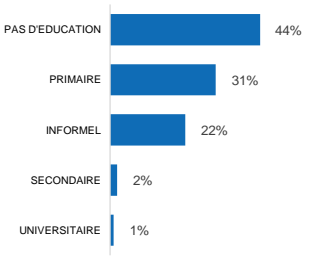
Répartition de la population (genres et tranches d'âges)



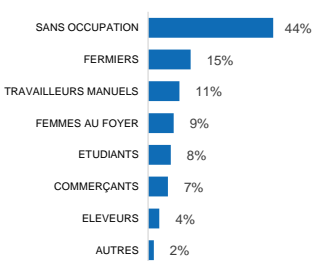
EVOLUTION DE LA POPULATION (12 DERNIERS MOIS)



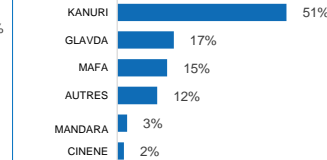
Niveaux d'études (adultes)



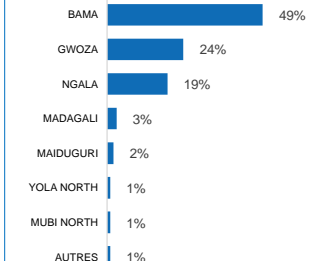
Occupations (adultes)



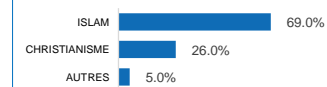
Principales Ethnies

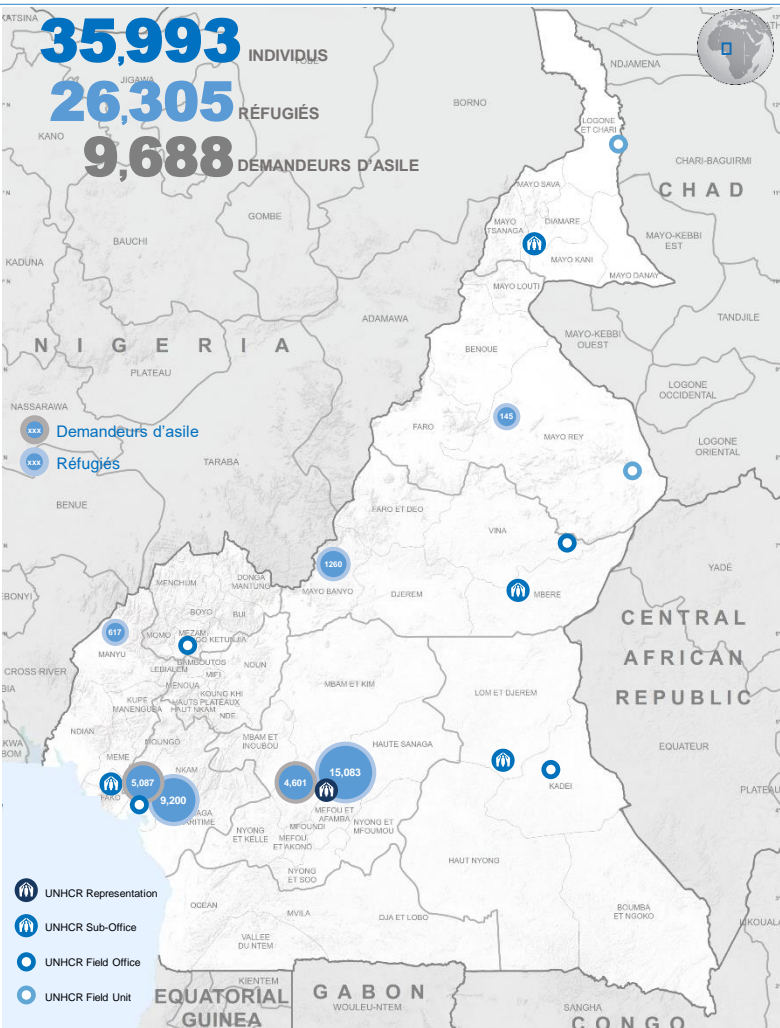


Districts d'origine

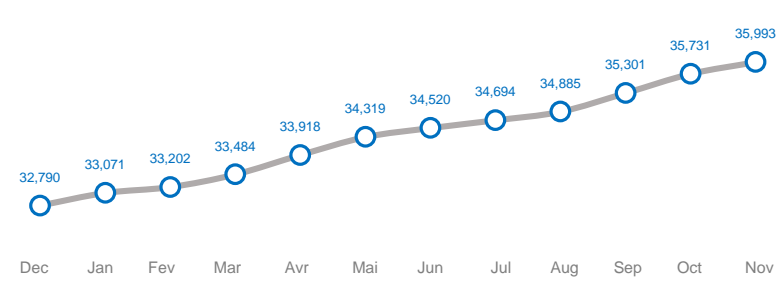


Principales Religions





EVOLUTION DE LA POPULATION (12 DERNIERS MOIS)

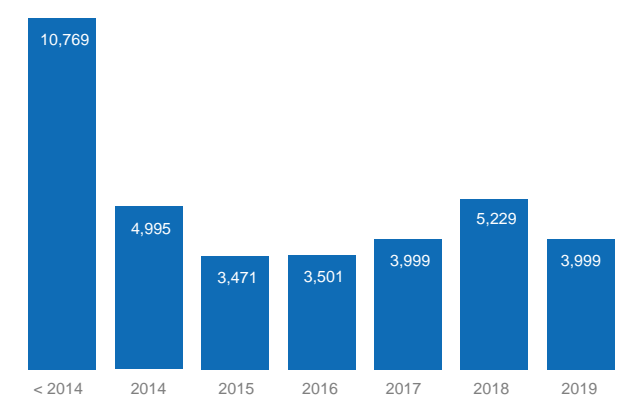


Source: Base de données proGRES – Novembre 2019

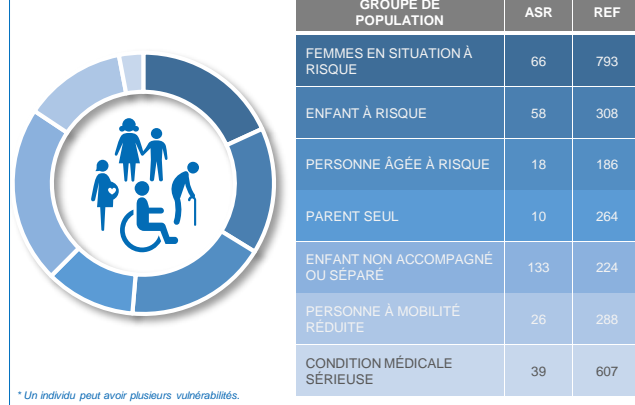
Réfugiés et demandeurs d'asile par tranches d'âges

STATUT	VILLE	0-4		5-11		12-17		18-59		60+		TOTAL
		FEMME	HOMME	FEMME	HOMME	FEMME	HOMME	FEMME	HOMME	FEMME	HOMME	
REFUGIÉS	AKWAYA	22	18	86	91	43	48	212	65	22	10	617
	BANYO	39	46	153	189	103	86	339	225	35	45	1260
	DOUALA	522	549	962	937	600	560	2496	2433	87	54	9200
	LANGUI	2	1	12	14	6	10	23	70	2	5	145
	YAOUNDÉ	969	1009	1547	1451	918	774	3595	4554	137	129	15083
DEMANDEURS D'ASILE	DOUALA	262	258	299	314	178	166	1014	2540	25	31	5087
	YAOUNDÉ	312	297	382	344	278	212	973	1746	36	21	4601
<b>GRAND TOTAL</b>		<b>2128</b>	<b>2178</b>	<b>3441</b>	<b>3340</b>	<b>2126</b>	<b>1856</b>	<b>8652</b>	<b>11633</b>	<b>344</b>	<b>295</b>	<b>35993</b>

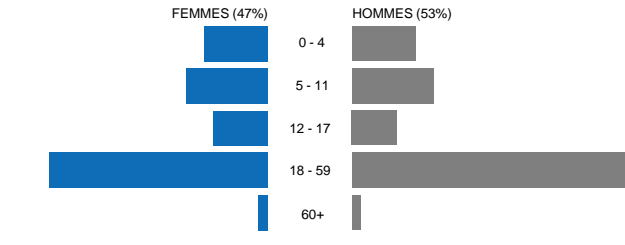
Arrivées des réfugiés et demandeurs d'asile



Personnes avec besoins spécifiques\*



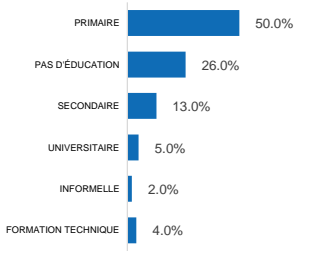
Répartition de la population (genres et tranches d'âges)



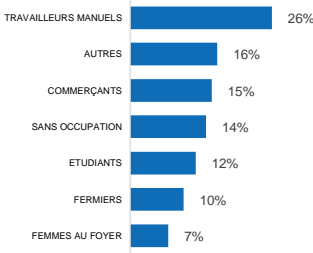
Enfants en âges scolaires

STATUT	INSTALLATION	3-5		6-11		12-18	
		FILLES	GARÇONS	FILLES	GARÇONS	FILLES	GARÇONS
REFUGIÉS	AKWAYA	31	32	77	77	47	50
	BANYO	69	75	123	160	114	111
	DOUALA	426	442	812	794	681	633
	LANGUI	2	4	12	11	8	10
	YAOUNDE	809	839	1260	1185	1048	891
DEMANDEURS D'ASILE	DOUALA	189	194	246	244	210	208
	YAOUNDE	224	205	330	268	338	290
<b>GRAND TOTAL</b>		<b>1750</b>	<b>1791</b>	<b>2860</b>	<b>2739</b>	<b>2446</b>	<b>2193</b>

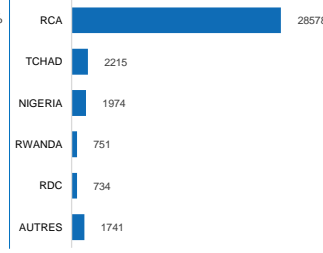
Niveaux d'études (adultes)



Occupations (adultes)



Principales Nationalités



Autres Nationalités

ALGERIE: 1	GHANA: 4	PAKISTAN: 1
ANGOLA: 5	GUINEE: 251	SENEGAL: 30
BURKINA FASO: 29	GUINEE BISSAU: 12	SIERRA LEONE: 10
BURUNDI: 96	GUINEE EQU.: 4	SOMALIE: 1
CAMBODGE: 3	IRAN: 4	SOUDAN: 150
CONGO: 75	ISRAEL: 2	SUD SOUDAN: 16
COTE D'IVOIRE: 165	LIBERIA: 12	SYRIE: 29
EGYPTE: 1	LIBYAN ARAB: 1	TANZANIE: 1
ETHIOPIE: 1	MALI: 211	TOGO: 30
ETHIOPIA: 13	MAROC: 7	TURKIE: 57
GABON: 8	MAURITANIE: 9	UGANDA: 2
GAMBIE: 5	NGER: 501	YEMEN: 4

Pour plus d'information, veuillez contacter: Christain Fogain (fogain@unhcr.org)