

# unrwa's response and services to palestine refugees from syria (PRS) in lebanon



## bi-weekly briefing

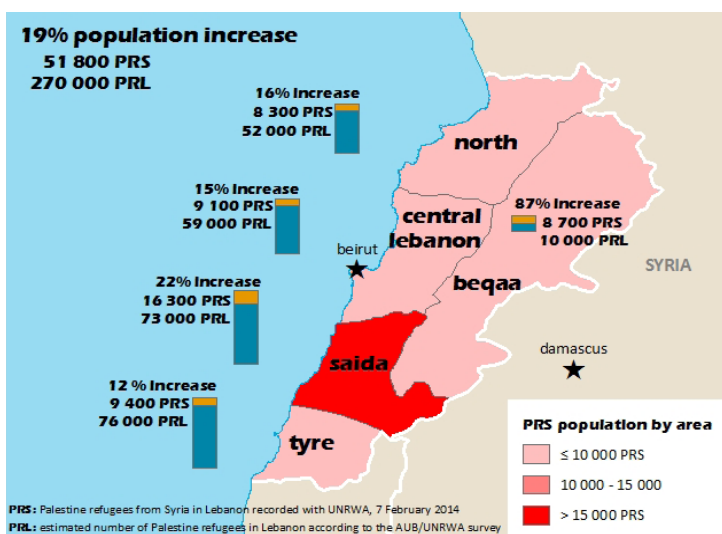
10 February 2014 | issue 30

### Highlights 19 January - 10 February 2014

- 51,800 PRS recorded with UNRWA in Lebanon
- 7,400 PRS students enrolled in UNRWA schools in Lebanon
- 14,039 PRS families have received an ATM card and were credited for December food and housing assistance

### Numbers and Locations

The current number of PRS living in Lebanon is approximately 51,800 of which 51% are residing in the camps, while the rest live outside the camps or in informal gatherings. It should be noted that while the number of those arriving to Lebanon at the Masnaa border crossing who are already recorded with UNRWA has remained relatively unchanged over the last six weeks, there has not been any significant increase in the number of newly recorded PRS.



**Map:** Location per area of 51,800 PRS compared with estimated number of Palestine Refugees in Lebanon (PRL).

### Funding 2013-2014

The total appeal for the period January - December 2013 was US\$65 million for an estimated 80,000 PRS. The total appeal for the period January - December 2014 is US\$90.4 million for an estimated 100,000 PRS by the end of 2014. To date, a total of US\$ 89.3 million has been received to cover PRS needs for 2013 and 2014 in all sectors. In addition to this funding, there have also been a number of in-kind donations, including emergency staff secondments by Sweden.

DONORS	FUNDED
Contributions 2013 - 2014	
European Union (total):	\$24,152,859
▪ EC \$12,250,904	
▪ IfS \$10,577,825	
▪ ECHO \$1,324,130	
United States of America	\$14,000,000
UK Department for International Development (DFID)	\$12,424,798
Germany	\$15,344,085
▪ Federal Office \$5,301,026	
▪ KfW \$10,043,059	
UNICEF	\$4,196,572
Kuwait	\$3,500,000
Japan	\$3,500,000
France	\$2,652,520
OCHA (total):	\$2,500,000
▪ CERF \$1,500,000	
▪ ERF \$1,000,000	
Italy	\$1,955,671
Australia	\$1,909,400
Norway	\$1,164,431
Swiss Agency for Development and Cooperation (SDC)	\$826,118
Ireland	\$688,705
Qatar Red Crescent Society (QRCS)	\$250,000
American Friends of UNRWA	\$106,000
Iceland	\$50,000
Hungary	\$42,691
Asfari Foundation	\$32,154
Les amis du Liban a Monaco	\$9,959

**Table:** Total Contributions Received by UNRWA for PRS 2013 - 2014

## Emergency Relief Assistance

UNRWA is the lead coordinating agency and the main provider of the emergency response for PRS. The Agency's Winterization Programme was implemented in December in conjunction with its partners to provide specific winter support to PRS families. UNRWA also completed a distribution for housing and food assistance in December 2013, targeting 14,039 PRS families across Lebanon. In January, UNRWA distributed bedding kits to 50 families living above 500m in Aley and to 69 families living above 500m in Nabatiyeh in the first week of February.

Assistance provided by UNRWA has been distributed by crediting ATM cards issued to beneficiaries in the third quarter of 2013 and to newcomers on a rolling basis. The exception is in the case of separated or unaccompanied minors, who are supported directly by members of UNRWA's Protection team by way of household visits and payments from UNRWA's local Area Offices.

The joint UNRWA – WFP needs assessment has been completed and results are being compiled. The final report is currently being prepared and results will be shared with donors.

## Environmental Health

The continued presence of PRS in camps throughout Lebanon exerts additional pressure on the camps' existing water supply sources and networks, sewerage and drainage systems, as well as operations related to the camps' solid waste management.

In response, UNRWA is upgrading the existing infrastructure systems in the camps through the provision of additional water sources including drilling of new boreholes, upgrading the existing water wells, and connecting additional shelters to water supply networks.

UNRWA is also carrying out necessary repairs and rehabilitation to sewerage and drainage systems. Works are implemented based on technical consultancy studies to identify needs and through conditional cash subsidies to beneficiaries to carry out simple maintenance works as part of the Agency's self-help approach with the technical support and supervision of UNRWA.

To address the considerable increase in solid waste needs, UNRWA has upgraded its operational management capacity through the hiring of additional sanitation staff, the provision of additional solid waste equipment, and the refurbishing of existing trucks and compactors to ensure that solid waste operations continue uninterrupted.

## Health

Thanks to generous contributions from donors, UNRWA is covering the cost of primary health care services for PRS including medical consultations and free medications through its 27 Health Centers located throughout the country. The health programme is also covering the costs of secondary and contributing towards tertiary hospitalization for emergency and life-threatening conditions. UNRWA also covers full Emergency Room Services at Palestine Red Crescent Society hospitals and partially covers this service at UNRWA contracted hospitals.

Funding from donors has enabled the Agency to enhance the primary healthcare (PHC) services offered to PRS. UNRWA was able to purchase essential medicines to cover chronic and acute conditions. Moreover, additional health staff were hired to support the PHC services through Family Health Teams in all areas.

Since April 2013, UNRWA has also supported PRS patients suffering from critical health conditions through services provided by the CARE programme. Additional support will be provided to patients to cover

expensive medical bills including costly hospitalisation, cancer medications and radiotherapy sessions, as well as treatment for people suffering from Multiple Sclerosis, Sickle Cell Anemia and Thalassemia.

## Education

In close cooperation with UNICEF, UNRWA is responding to the educational, recreational and psychosocial needs of PRS students with special classes focusing on subjects including Arabic, English and Arithmetic as well as recreational activities. Furniture and IT equipment is currently being distributed to all 19 PRS school centres and UNRWA is purchasing and formulating distribution plans for stationary and general supplies.

The number of PRS students enrolled in UNRWA schools has increased to 7,400 PRS students by 3 February. 89% are attending special classes for PRS and 11% are integrated in UNRWA regular classes for Palestine Refugees in Lebanon. UNRWA continues to actively encourage parents to enroll their children in school. The Agency has prepared a strategy for both the continuing education needs of those who are currently enrolled and newcomers. PRS students are automatically admitted to UNRWA schools upon enrolment. This service is provided by more than 400 additional staff at school level hired under emergency funding. The Agency is currently finalising a comprehensive plan for psychosocial support and recreational activities during the academic year and summer vacation.

## Shelter Rehabilitation

In the last week of January and first week of February, UNRWA completed shelter rehabilitation works in collective centers for PRS in the Ein el-Hilweh camp in Saida and Burj Shamali Camp in Tyre, benefitting 15 families. Additional shelter rehabilitation projects have been assessed and approved for four families in Ein el-Hilweh, which will commence in April 2014. Works have also been undertaken to improve the educational facilities for PRS students and the construction of an outdoor sheltered area has been approved for Beit Zeit School in Siblin.

## Protection, Legal Status and Advice

UNRWA, in coordination with other UN agencies in Lebanon, continues to seek clarification from the Lebanese General Security on the visa options available to PRS once they have been in Lebanon for more than one year. Legal status in Lebanon is critical for their protection vis-à-vis the Lebanese authorities and also ensures that PRS are able to officially register any changes to their or their families' legal status in Lebanon (e.g. marriage, birth, deaths). UNRWA continues to provide legal advice and assistance to PRS who do not possess a valid visa to remain in Lebanon.

Since August 2013, a number of refugees from Syria (including PRS) have been denied entry into Lebanon. UNRWA liaises with representatives from the General Security Office in order to facilitate entry into Lebanon for humanitarian cases and has a dedicated staff member at the Masnaa border crossing to undertake this work. The United Nations, including UNRWA, continues to advocate with the Lebanese authorities for the equal treatment of all refugees at the border, particularly PRS whose visas have expired. Palestine refugees in Lebanon are not covered under the mandate of UNHCR. Palestine refugees that approach UNHCR are referred to UNRWA.

In an effort to rebuild protective community structures and ensure that UNRWA's response to Sexual and Gender Based Violence (SGBV) addresses the self-stated needs of Palestinian women and girls, particularly PRS, UNRWA has established six community-based support groups in three Palestinian refugee camps in Tyre. The groups are facilitated by a GBV specialist, UNRWA community development social workers and protection staff. In partnership with Najdeh Association and Women Programme Centers, the support groups were developed to represent women's interests and to identify and protect those most vulnerable to SGBV. The support groups will also be used to obtain feedback from women on the delivery of UNRWA services, including its Syria emergency response.



united nations relief and works agency  
for palestine refugees in the near east

[www.unrwa.org](http://www.unrwa.org)

Contact: [r.akele@unrwa.org](mailto:r.akele@unrwa.org)