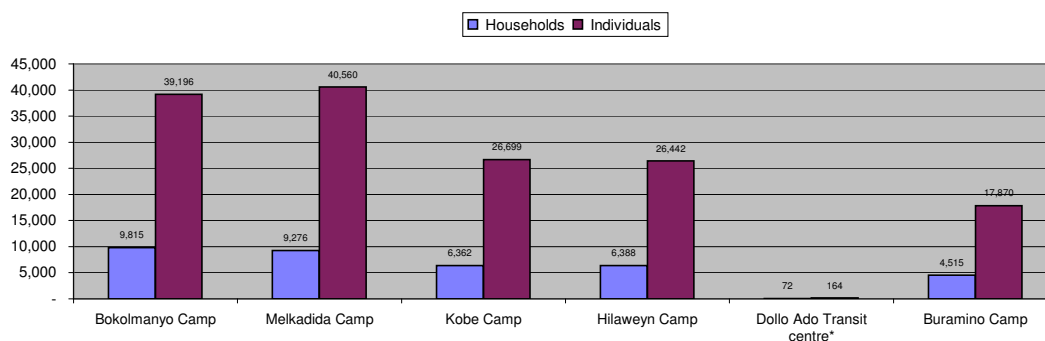


## Dollo Ado Population Statistical Report

*As of 03 May 2012*

**Figure 1.1 - Total Refugee Population in Dollo Ado**

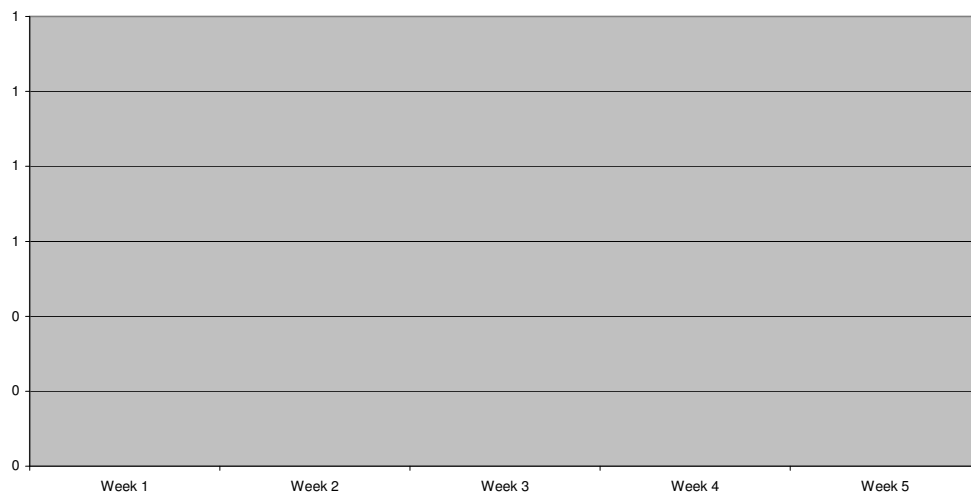


**Table 1.1 - Total Refugee Population in Dollo Ado**

Site/Camp	As of 31 Dec 2010		As of 31 Dec 2011		Current Total	
	Households	Individuals	Households	Individuals	Households	Individuals
Bokolmanyo Camp	3,988	14,988	9,624	38,501	9,815	39,196
Melkadida Camp	6,452	25,491	10,024	40,696	9,276	40,560
Kobe Camp	n/a	n/a	5,946	26,033	6,362	26,699
Hilaweyn Camp	n/a	n/a	6,119	25,747	6,388	26,442
Buramino Camp	n/a	n/a	911	4,045	4,515	17,870
<b>Camp Sub-Total</b>	<b>10,440</b>	<b>40,479</b>	<b>32,624</b>	<b>135,022</b>	<b>36,356</b>	<b>150,767</b>
Dollo Ado Transit centre*	n/a	n/a	1,902	7,284	72	164
<b>Temporary Locations Sub-Total</b>	<b>n/a</b>	<b>n/a</b>	<b>n/a</b>	<b>n/a</b>	<b>72</b>	<b>164</b>
<b>GRAND TOTAL ALL LOCATIONS</b>	<b>10,440</b>	<b>40,479</b>	<b>34,526</b>	<b>142,306</b>	<b>36,428</b>	<b>150,931</b>

\* Individuals currently in the Transit Centre. All new arrivals are registered at the Transit Centre and are subsequently relocated to the camps.

**Figure 1.2 - New Arrivals at Reception Centre During Current Month (Weekly)**



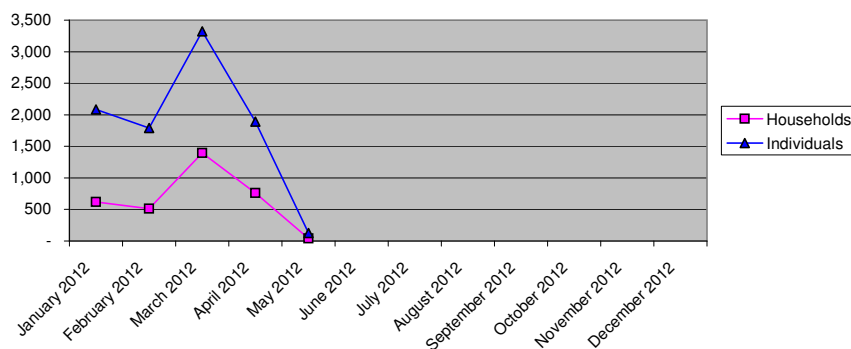
**Table 1.2 - Daily New Arrivals and Pre-registration by ARRA at the Reception Centre**

Date	Newly Arrived Individuals	Pre-registered by ARRA *
Tue 01 May 12	46	46
Wed 02 May 12	16	16
Thu 03 May 12	65	65
Fri 04 May 12		
Sat 05 May 12		
Sun 06 May 12		
Mon 07 May 12		
Tue 08 May 12		
Wed 09 May 12		
Thu 10 May 12		
Fri 11 May 12		
Sat 12 May 12		
Sun 13 May 12		
Mon 14 May 12		
Tue 15 May 12		
Wed 16 May 12		
Thu 17 May 12		
Fri 18 May 12		
Sat 19 May 12		
Sun 20 May 12		
Mon 21 May 12		
Tue 22 May 12		
Wed 23 May 12		
Thu 24 May 12		
Fri 25 May 12		
Sat 26 May 12		
Sun 27 May 12		
Mon 28 May 12		
Tue 29 May 12		
Wed 30 May 12		
Thu 31 May 12		
<b>TOTAL THIS MONTH</b>	<b>127</b>	<b>127</b>

\* Pre-registration by ARRA is not necessarily done on the day of Arrival

\*\* Represent days when ARRA was not receiving Asylum seekers.

The number of those received during these days is include in the figure of next receiving day.

**Figure 1.3 - Pre-Registration Trends in 2012 (Reception Centre/ ARRA)**


Note: these are registration volumes by month, not cumulative figures.

**Table 1.3 - Pre-Registration Trends in 2012 (Reception Centre/ ARRA)**

Month	Households	Individuals
January 2012	621	2,084
February 2012	512	1,789
March 2012	1,395	3,324
April 2012	762	1,892
May 2012	42	127
June 2012		
July 2012		
August 2012		
September 2012		
October 2012		
November 2012		
December 2012		
<b>Total</b>	<b>3,332</b>	<b>9,216</b>

**Table 1.4 - Registration & Relocation Trends in Transit Centre up to date**

Stage of Registration & Relocation	Individuals
Total individuals fully registered so far this month	229
Total individuals relocated to camps so far this month	135
Total individuals fully processed (have ration card), but not yet relocated	147

## Camp Population by Age and Sex breakdown

As of 03 May 2012

Table 2.1 - ALL CAMPS Demographic Breakdown\*

Age Group	Sex				Total	
	Male	(%)	Female	(%)	Total	(%)
0 - 4	15,582	10.3%	15,200	10.1%	30,782	20.4%
5 - 11	26,140	17.3%	25,182	16.7%	51,322	34.0%
12 - 17	10,152	6.7%	8,957	5.9%	19,109	12.7%
18 - 59	17,221	11.4%	28,748	19.1%	45,969	30.5%
60 and above	1,866	1.2%	1,719	1.1%	3,585	2.4%
<b>Total ALL CAMPS</b>	<b>70,961</b>	<b>47.1%</b>	<b>79,806</b>	<b>52.9%</b>	<b>150,767</b>	<b>100.0%</b>

\* These total figures apply only to camps, not to the Transit Centre or Reception Centre

Figure 2.1 - ALL CAMPS Demographic Breakdown\*

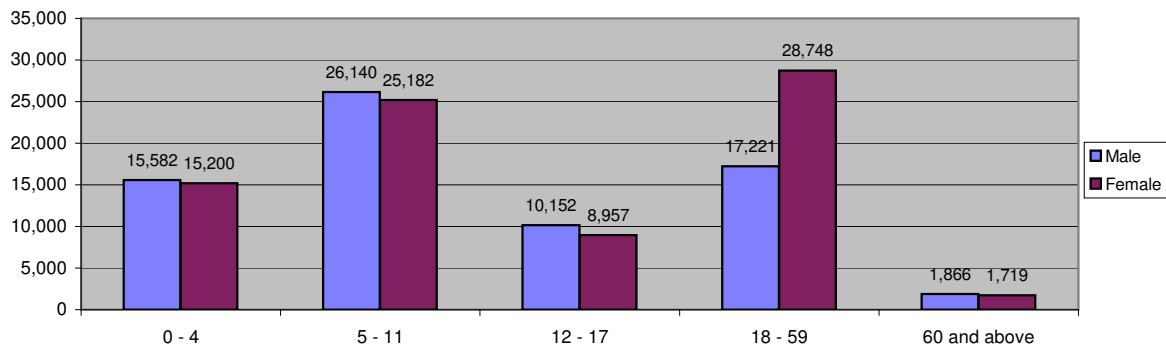
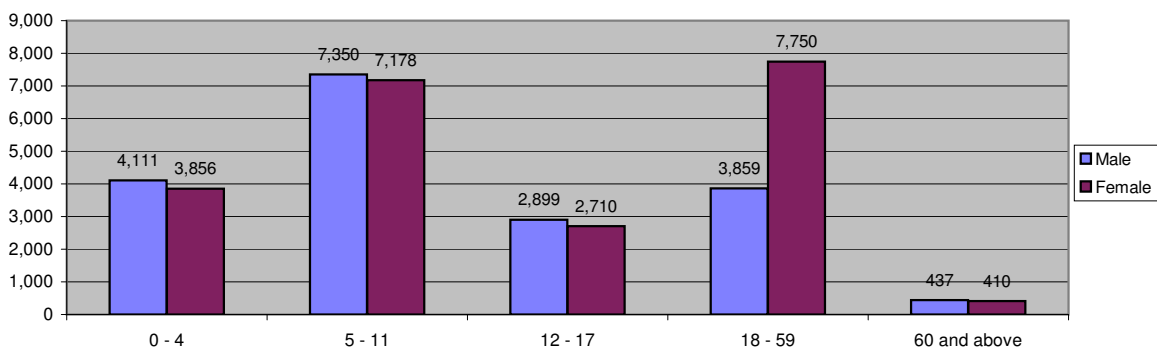


Table 2.2 - Melkadida Camp Demographic Breakdown

Age Group	Sex				Total	
	Male	(%)	Female	(%)	Total	(%)
0 - 4	4,111	10.1%	3,856	9.5%	7,967	19.6%
5 - 11	7,350	18.1%	7,178	17.7%	14,528	35.8%
12 - 17	2,899	7.1%	2,710	6.7%	5,609	13.8%
18 - 59	3,859	9.5%	7,750	19.1%	11,609	28.6%
60 and above	437	1.1%	410	1.0%	847	2.1%
<b>Total Melkadida</b>	<b>18,656</b>	<b>46.0%</b>	<b>21,904</b>	<b>54.0%</b>	<b>40,560</b>	<b>100.0%</b>

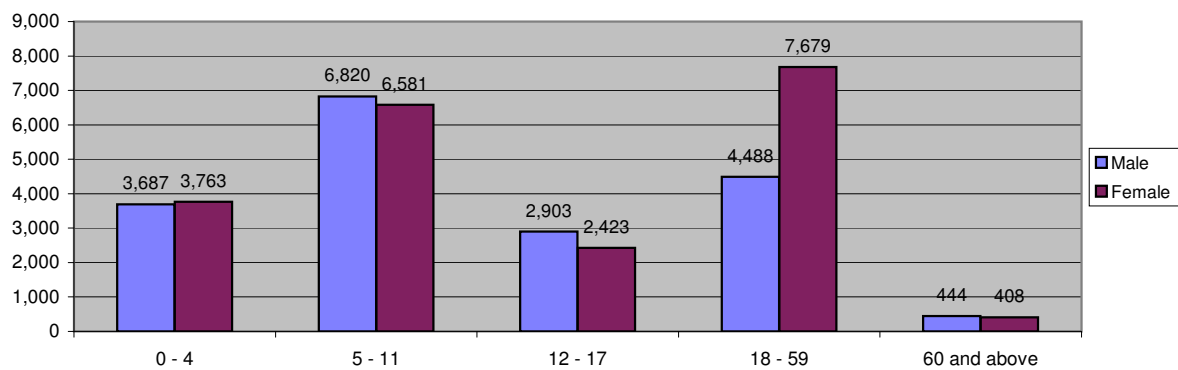
Figure 2.2 - Melkadida Camp Demographic Breakdown



**Table 2.3 - Bokolmanyo Camp Demographic Breakdown**

Age Group	Sex				Total	
	Male	(%)	Female	(%)	Total	(%)
0 - 4	3,687	9.4%	3,763	9.6%	7,450	19.0%
5 - 11	6,820	17.4%	6,581	16.8%	13,401	34.2%
12 - 17	2,903	7.4%	2,423	6.2%	5,326	13.6%
18 - 59	4,488	11.5%	7,679	19.6%	12,167	31.0%
60 and above	444	1.1%	408	1.0%	852	2.2%
<b>Total Bokolmanyo</b>	<b>18,342</b>	<b>46.8%</b>	<b>20,854</b>	<b>53.2%</b>	<b>39,196</b>	<b>100.0%</b>

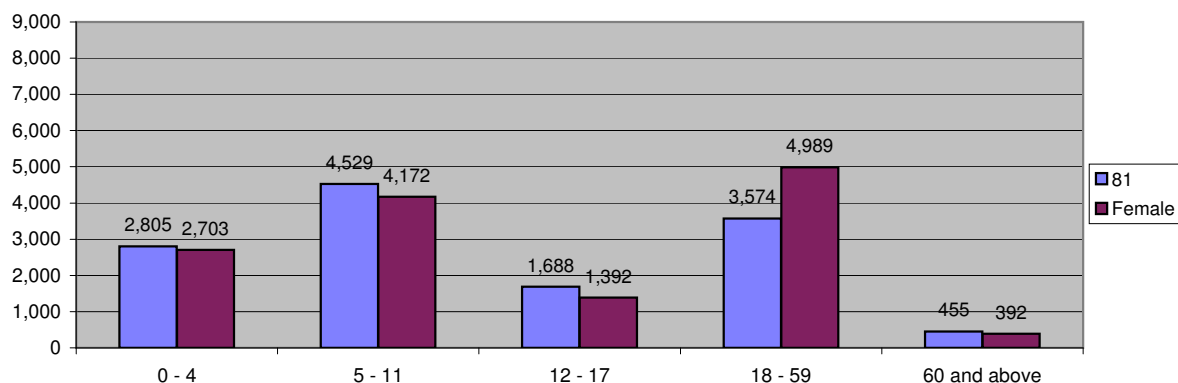
**Figure 2.3 - Bokolmanyo Camp Demographic Breakdown**



**Table 2.4 - Kobe Camp Demographic Breakdown**

Age Group	Sex				Total	
	81	74	Female	(%)	Total	(%)
0 - 4	2,805	10.5%	2,703	10.1%	5,508	20.6%
5 - 11	4,529	17.0%	4,172	15.6%	8,701	32.6%
12 - 17	1,688	6.3%	1,392	5.2%	3,080	11.5%
18 - 59	3,574	13.4%	4,989	18.7%	8,563	32.1%
60 and above	455	1.7%	392	1.5%	847	3.2%
<b>Total Kobe</b>	<b>13,051</b>	<b>48.9%</b>	<b>13,648</b>	<b>51.1%</b>	<b>26,699</b>	<b>100.0%</b>

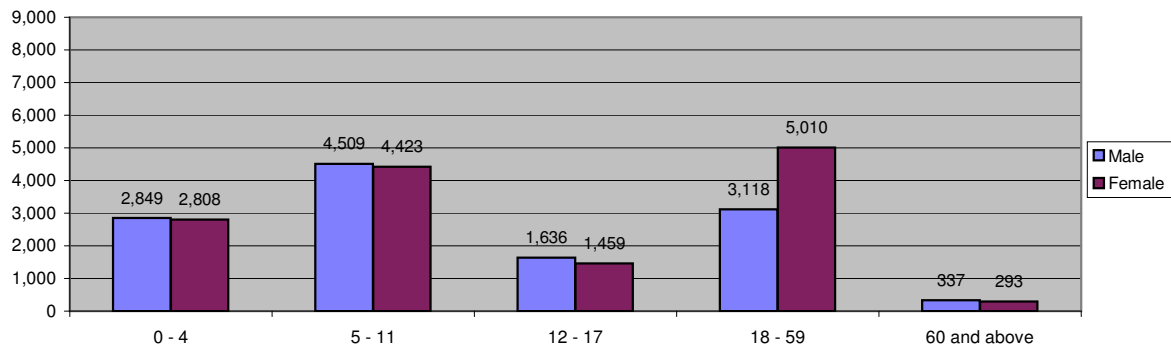
**Figure 2.4 - Kobe Camp Demographic Breakdown**



**Table 2.5 - Hilaweyn Camp Demographic Breakdown**

Age Group	Sex				Total	
	Male	(%)	Female	(%)	Total	(%)
0 - 4	2,849	10.8%	2,808	10.6%	5,657	21.4%
5 - 11	4,509	17.1%	4,423	16.7%	8,932	33.8%
12 - 17	1,636	6.2%	1,459	5.5%	3,095	11.7%
18 - 59	3,118	11.8%	5,010	18.9%	8,128	30.7%
60 and above	337	1.3%	293	1.1%	630	2.4%
<b>Total Hilaweyn</b>	<b>12,449</b>	<b>47.1%</b>	<b>13,993</b>	<b>52.9%</b>	<b>26,442</b>	<b>100.0%</b>

**Figure 2.5 - Hilaweyn Camp Demographic Breakdown**



**Table 2.6 - Buramino Camp Demographic Breakdown**

Age Group	Sex				Total	
	Male	(%)	Female	(%)	Total	(%)
0 - 4	2,130	11.9%	2,070	11.6%	4,200	23.5%
5 - 11	2,932	16.4%	2,828	15.8%	5,760	32.2%
12 - 17	1,026	5.7%	973	5.4%	1,999	11.2%
18 - 59	2,182	12.2%	3,320	18.6%	5,502	30.8%
60 and above	193	1.1%	216	1.2%	409	2.3%
<b>Total Buramino</b>	<b>8,463</b>	<b>47.4%</b>	<b>9,407</b>	<b>52.6%</b>	<b>17,870</b>	<b>100.0%</b>

**Figure 2.6 - Buramino Camp Demographic Breakdown**

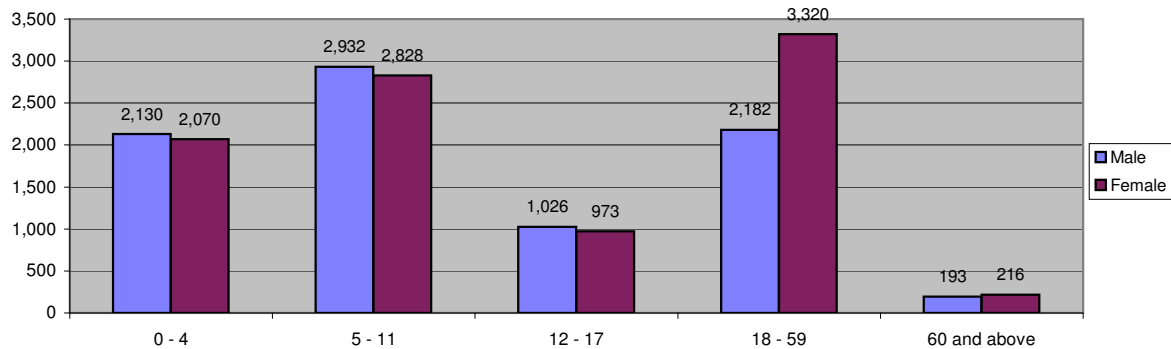


Table 2.7 - Dollo Ado Transit Centre Demographic Breakdown

Age Group	Sex				Total	
	Male	(%)	Female	(%)	Total	(%)
0 - 4	23	14.0%	24	14.6%	47	28.7%
5 - 11	17	10.4%	20	12.2%	37	22.6%
12 - 17	17	10.4%	8	4.9%	25	15.2%
18 - 59	19	11.6%	29	17.7%	48	29.3%
60 and above	4	2.4%	3	1.8%	7	4.3%
<b>Total Transit Centre</b>	<b>80</b>	<b>48.8%</b>	<b>84</b>	<b>51.2%</b>	<b>164</b>	<b>100.0%</b>

Figure 2.7 - Dollo Ado Transit Centre Demographic Breakdown

